

technical datasheet



Corden EPS

1mm Polypropylene Lift Pit Liner

Description

The Lift Pit Liner is a 1mm propylene/ethylene co-polymer geomembrane. Produced from a resin formulation designed to provide a premium quality geomembrane, which exhibits excellent flexibility, improved elasticity and resistance to puncture. These properties assure maximum multi-axial elongation to accommodate differential settlement. Polypropylene is ideal for geomembrane applications, and major benefits to installation are provided by a lower coefficient of thermal expansion and a wide temperature-welding window. Heat welding produces a homogenous membrane being totally impervious to water ingress. The product lends itself to applications where high/variable water tables, standing water and water creating hydrostatic pressure areas are in evidence.

Construction of Lift Pit Liner

The manufacturing of the lift pit liner commences when the length, width and height measurements have been obtained and signed off by contractor installing the product.

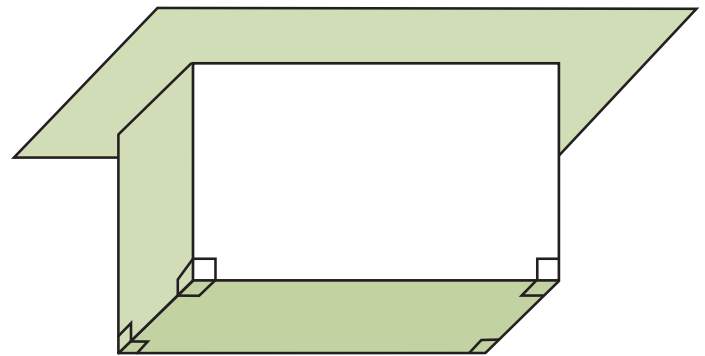
The lift pit liner is heat welded together with a 50mm overlap joint running vertical in each corner, fusing the two membranes creating a homogenous material joint. Corners are reinforced with an addition layer of membrane.

Around the topside of the lift pit liner a return flange of 150mm wide or greater dependant on request, is then joined to the D.P.M by contractor. The type of sealant/D.P.M jointing material required will depend upon type of D.P.M, and contractor should seek advice from the Corden technical helpline with regard to this issue.

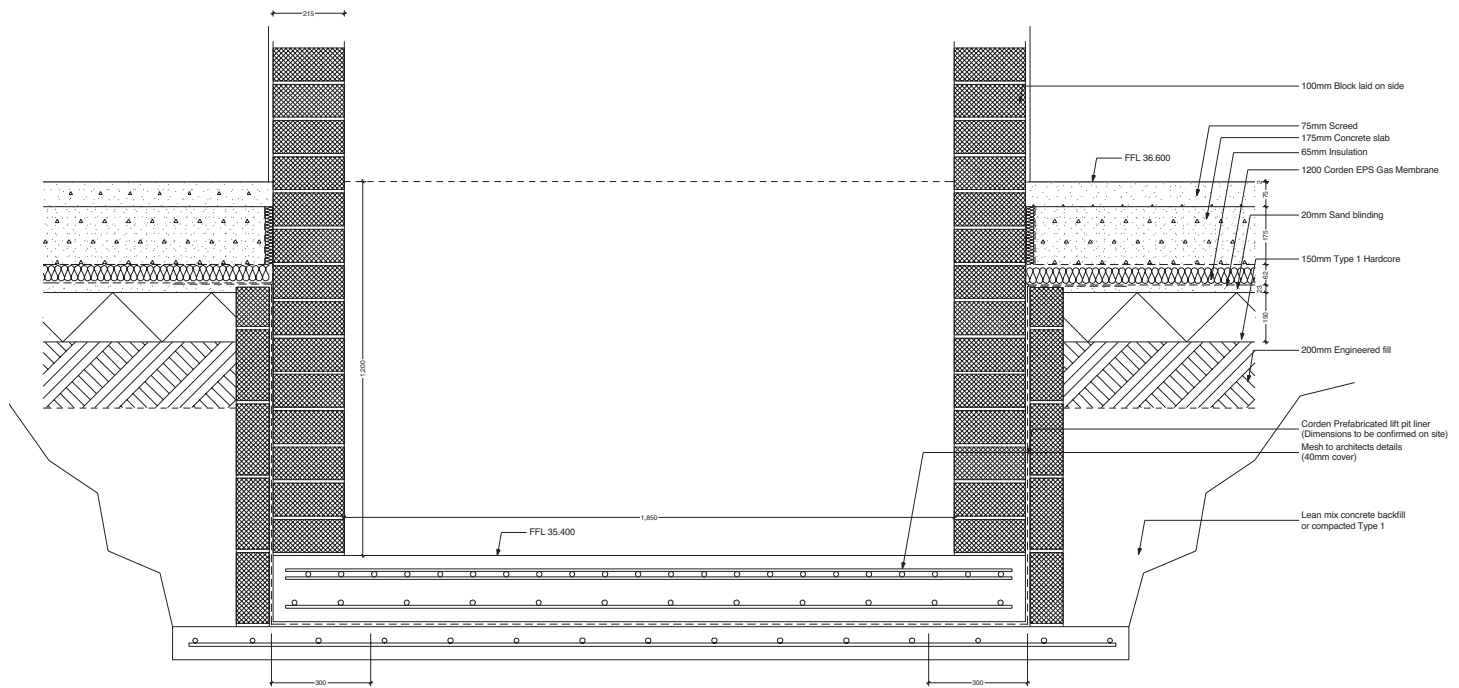
Technical Information

Tested Property.	Test Method.	Min. Value.
Nominal Thickness (mm)	ASTM D5199	1.00
Density (g/cm ³)	ASTM D792/ 1505 A	0.88
Elongation at Break %	G L 50mm	960
Tear Resistance (N)	ASTM D1004	55
Puncture Resistance (N)	ASTMD4833	150

Contact the Corden technical help line for typical installation details for this product, or specific issues relating to individual applications.



Typical Detail of Corden EPS Lift Pit Liner



leach way, burma road, blidworth industrial estate, blidworth, nottinghamshire ng21 0ru
 tel 0115 965 6111 fax 0115 965 5151 email sales@cordengroup.co.uk web www.cordengroup.co.uk

'Easi' branded products are guaranteed by Corden Group Ltd against defective materials and manufacture. We cannot however accept any liability arising from the application or use of our products because we have no direct or continuous control over where and how our products are used. All products are sold subject to our conditions of sale, copies of which may be obtained on request.