

technical datasheet



Geotec Woven Textile

Geotec Woven Textile is a general purpose split tape woven permeable geotextile for use as a separator in all types of civil engineering and building projects. Geotec Woven Textile creates a firm foundation on which you can build with confidence.

If Geotec Woven Textile is not used over 150mm of stone will be lost into the ground where soil has a CBR of less than 3%, some road construction would be impossible to build without the use of a geotextile separator.

Its main application is to separate granular material from soft soils in road construction, car parks land fill, reclamation, and docklands, etc.

		Warp	Weft	
Tensile Strength	(kn/m)	22	14	BSEN ISO 10319
Elongation	(%)	25	22	BSEN ISO 10319
Thickness	(mm 2kPa)	0.32		BSEN ISO 9864
CBR Puncture	(N)	2100		BSEN ISO 12236
Puncture Displacement	(mm)	38		BSEN ISO 12236
Cone Drop	(mm)	16		BSEN ISO 918
Waterflow at 100mm head	(l/m ² /s)	6.6		BSEN ISO 11058
Pore Size	(Micron)	200		BSEN ISO 12956
UV Stability		The Polypropylene used contains UV inhibitor		
Material		Polypropylene		
Style Split		Tape Woven		
Life Expectancy		50 years		

Note: Average deviation shall be +/- 10% of the above values

Installation

Roll out onto the prepared ground that is free from sharp objects. The material should be overlapped by 150-300mm, larger overlaps may be required on very weak soft ground. Place the backfill in layers and compact.

Do not run construction traffic directly onto the Geotextile.

Always maintain at least 200mm of cover.

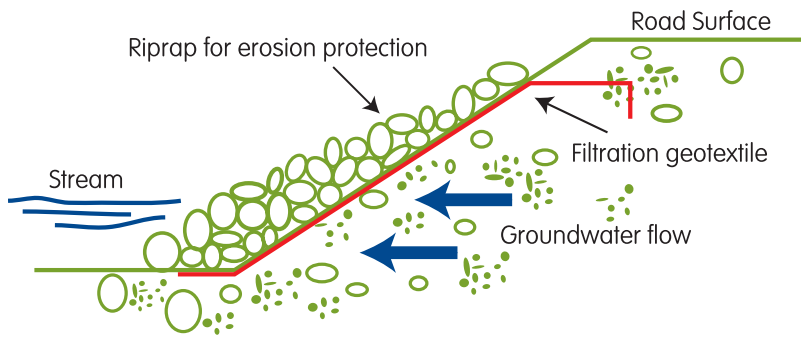
Suitable backfill comprises, soil, sand, gravel, crushed stone or brick.

Supply

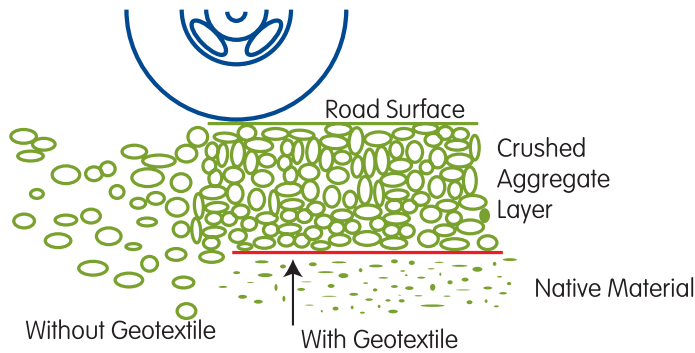
Geotec Woven Textile is supplied in 4.5 x 100 mtr rolls (37kgs) 2 x 100 mtr rolls (18.5kgs) and also 4.5 x 100 mtr rolls folded into a pack size of 1.5 mtr wide rolls for easy loading into to small vehicles.

Geotec Woven Textile is inert and does not present a health hazard and no special precautions are necessary.

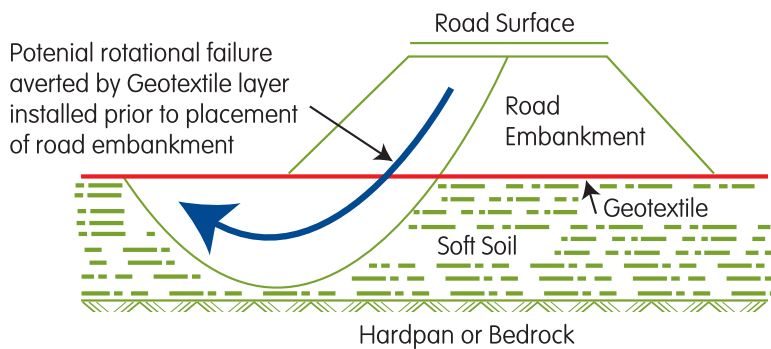
Please note the rolls do weigh more than 25 kilos so may need 2 persons when lifting.



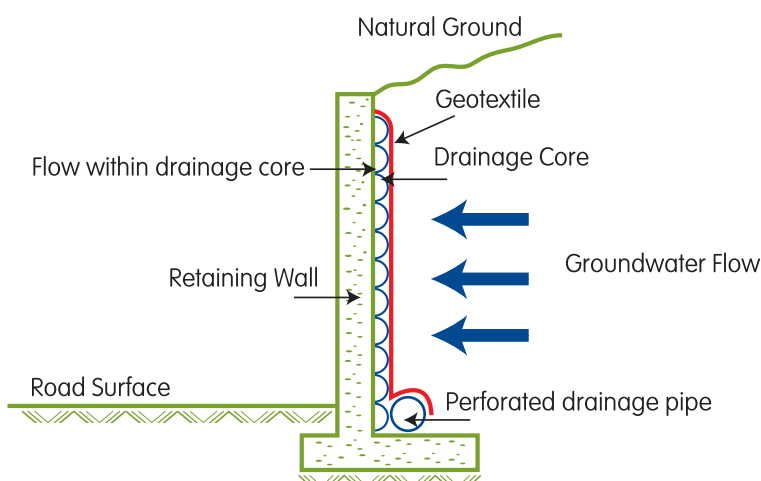
Geotec material used with riprap allows water movement while preventing movement of soil particles.



Geotec material provides separation, which preserves the integrity and extends the life of the road surface layer.



Geotec material under the roadbed reinforces soft soil and preserves the road embankment.



Composite Geotec material allows water flow within the plane of the material, rather than across it, such as behind a retaining wall.

industrial estate south, park road, calverton, nottingham ng14 6bp
 tel 0115 965 6111 fax 0115 965 5151 email sales@cordengroup.co.uk web www.cordengroup.co.uk

'Easi' branded products are guaranteed by Corden Group Ltd against defective materials and manufacture. We cannot however accept any liability arising from the application or use of our products because we have no direct or continuous control over where and how our products are used. All products are sold subject to our conditions of sale, copies of which may be obtained on request.