



# Product Guide



Authorised User No. 00007



BRITISH MANUFACTURER



ENERGY EFFICIENCY



CONTROLS



SERVICE



TRAINING

# Quick reference

Find the right solution for your application

Six product ranges supported by an extensive number of models and exceptional configuration flexibility means that when selecting an Airedale system, your choice of variants is considerable, enabling you to precisely match your application.

We apply the latest technology led by smart control logic to ensure our products offer you the highest efficiency, resilience and quality. First and foremost, they are designed to be stand-alone, but when integrated, they share intelligence and further reduce energy through combined efficiencies.

Our breadth of expertise enables us to engineer innovative, integrated cooling solutions across commercial and public sectors - in data centres and other critical environments; industrial process cooling or comfort cooling in retail, leisure and office applications.

## Airedale - Your first choice

Airedale is a British manufacturer with over 40 years industry experience. As the UK's number one provider of chillers, precision air conditioning and IT cooling solutions and at the forefront of controls software design and optimisation, we are experts in integrating our products to reduce your total cost of ownership.

We can help you select the optimum specification tailored to your application and provide the support which will enable you to manage your cooling system for best performance, maximum longevity and lower operating costs.

### Global company

Airedale is a world leader in the design and manufacture of innovative, high efficiency cooling solutions. We manufacture in three continents and export to customers in over sixty countries through a network of more than seventy business partners.

## Chillers

20kW

1080kW

SCROLL

### DeltaChill™ 110 - 1010kW



PAGE 09



### DeltaChill™ FreeCool 140 - 1080kW



PAGE 09



### Ultima™ Compact 30 - 450kW



PAGE 12



### Ultima™ Compact FreeCool 75 - 450kW



PAGE 12



### Ultima™ Remote Air Cooled 75 - 450kW



PAGE 11



### Ultima™ Remote Water Cooled 75 - 450kW



PAGE 11



### LogiCool™ FreeCool 20 / 40kW



PAGE 11



CENTRIFUGAL

### TurboChill™ 200 - 1800kW



PAGE 09



### TurboChill™ FreeCool 200 - 1830kW



PAGE 09



### TurboChill™ Water Cooled 150 - 1576kW



PAGE 09



SCREW

### OptiChill™ 500 - 1365kW



PAGE 10



### OptiChill™ FreeCool 750 - 1365kW



PAGE 10



# Precision Air Conditioning

5kW 233kW

**SmartCool™** 11 - 233kW

HFC R410A DX WATER DX CW ↓ INVERTER DUAL COOL FREE COOL

PAGE 03 

**SmartCool™ Inverter Compressor** 5 - 83kW

HFC R410A DX ↓ INVERTER

PAGE 03 

**EasiCool™** 6 - 64kW

HFC R410A DX WATER DX CW ↓ INVERTER DUAL COOL FREE COOL INVERTER

PAGE 04 

**Ecotel™** 5 - 15kW

HFC R410A DX FREE COOL ↓ INVERTER DC

PAGE 04 

**Ecotel™ Free Cool** 5 - 15kW

FREE COOL ↓ INVERTER DC

PAGE 04 

# IT Cooling

2kW 67kW

**OnRak™** 3 - 35kW

CW

PAGE 05 


**InRak™** 10 - 67kW

HFC R410A DX CW INVERTER

PAGE 05 

**ACE (ECHO)** 2 - 20kW per rack

CW

PAGE 06 

**AireTile™** Up to 1.2m³/s


PAGE 06 

# Comfort

2kW 77kW

**Storemaster™** 50 - 77kW

HFC R410A DX HEAT PUMP INVERTER FREE COOL

PAGE 07 

**Cassette** 2 - 12kW

CW

PAGE 07 

# Condensers & Condensing Units

3kW 450kW


**BlueCube™** 10 - 48kW

HFC R410A DX HEAT PUMP INVERTER DIGITAL

PAGE 13 

**Air Cooled Condensers (CR)** 12 - 174kW (R410A)

HFC R410A DX

PAGE 13 

**Air Cooled Condensers (C/Cs)** 11 - 105kW (R407C)

HFC R407C DX


PAGE 13 

**Dry Coolers (DR)** 10 - 100kW

PAGE 13 


**Condensing Units (CU1 - CU4)** 3 - 13kW THR

HFC R407C DX HEAT PUMP

PAGE 14 

**Condensing Units (CUS5 - 12)** 14 - 35kW THR

HFC R407C DX HEAT PUMP

PAGE 14 

**Condensing Units (CUS15 - 30D)** 40 - 80kW THR

HFC R407C DX

PAGE 14 

**Ultima™ Compact Condensing Unit** 30 - 450kW THR

HFC R407C HFC R410A DX INVERTER

PAGE 14 

# Air Handling Units

100kW 440kW

**AireFlow™** 100 - 440kW

HFC R410A DX HEAT PUMP INVERTER FREE COOL

PAGE 08 

## PRODUCT KEY

See product pages 3 - 14 inclusive for a reference to which icons represent standard or optional features

HFC R410A	HFC R134a	HFC R407C	HFO R1234ze	AIR COOLED	WATER COOLED
SCROLL COMPRESSOR	SCREW COMPRESSOR	CENTRIFUGAL COMPRESSOR	EC INVERTER COMPRESSOR	INVERTER COMPRESSOR	DIGITAL COMPRESSOR
CHILLED WATER	HEAT PUMP	UPFLOW	DOWNFLOW	UPFLOW/DOWNFLOW	MICROCHANNEL COIL
DUAL COOL	FREE-COOLING	EC FAN	ADIABATIC	DC	

# Precision Air Conditioning



## SmartCool™ 11 - 233kW



- + **21% energy saving in free-cooling dual cool variant**
- + **Up to 30% more cooling kW/m<sup>2</sup> compared to similar leading competitor units (CW range)**
- + **EER up to 52.4 (CW range)**
- + Single or dual circuit featuring: DX air cooled (16kW – 140kW); DX air cooled with chilled water (60 – 127kW), DX water cooled (60kW – 127kW); DX water cooled with glycol free-cooling (60 – 127kW); Chilled water (11kW – 233kW)
- + Up to 4 stages of tandem compressor DX cooling
- + Compliant scroll compressors for increased reliability and extended operating envelope
- + Variable humidification
- + ETL listed
- + Large surface area filters for lower airside pressure drop and increased system efficiency
- + EC fans as standard
- + Minimum space claim
- + Front access to all major components for easy service and maintenance
- + Constant air volume control (option)
- + Constant pressure control (option)



## SmartCool™ Inverter Compressor 5 - 83kW



- + **Up to 21% more cooling kW/m<sup>2</sup> compared with nearest competitor units**
- + **Up to 45% more cooling kW/m<sup>2</sup> compared to fixed speed compressor systems**
- + 11 models, 4 case sizes
- + Inverter driven compressors for exact capacity match – saving substantial energy at part load
- + Slab coil design for reduced airside pressure drop
- + Optimised for hot and cold aisle containment with return air temperatures of up to 40°C
- + Accurate supply air temperature control (up to 26°C)
- + Suitable for long pipe runs up to 100m
- + ETL listed
- + Ambient operating envelope from -20°C to +50°C for flexible installation
- + Full 360° unit access for service and maintenance
- + Large surface area filters for increased performance and reduced fan power usage
- + Constant pressure control (option)
- + Constant air volume control (option)



Commercial Building  
Services Product of the Year



Data Energy Efficiency  
Product of the Year



## EasiCool™ 6 - 64kW



- + **50 - 100% variable capacity control with suction throttle valve option**
- + **Up to 70% more efficiency with EC fans optional upgrade on all indoor and outdoor units**
- + 76 DX (38 air cooled and 38 water cooled) and 34 chilled water models, in 6 case sizes
- + Tandem scroll compressors for reduced sound and part load efficiencies (models 20 - 64kW)
- + AV mounted, direct drive, speed controllable EC fan technology (models 6 - 27kW)
- + Variable humidification for precisely conditioned air
- + Full 360° service and maintenance access
- + Hot gas re-heat efficiently re-heats cool air during dehumidification (option)
- + Electric heating can be upgraded with thyristor control (option)
- + Direct drive backward curved EC fan upgrade for all indoor and outdoor units (option)



## Ecotel™ 5 - 15kW

## Ecotel™ Free Cool 5 - 15kW



### Ecotel™

- + **Fresh air free cooling with 100% mechanical backup with annual running costs of just £357**
- + 4 modes of operation (heating, free cooling, concurrent, mechanical cooling)
- + 80 models in 4 case sizes
- + Less than 3kg of refrigerant per circuit – no need for annual leak detection inspections
- + Low and high ambient capability
- + Fault code alarm display option

### Ecotel™ Free Cool

- + **Fresh air free-cooling for 100% of the year (UK)**
- + Self-contained compact outdoor cabin cooler
- + Two case sizes
- + -48V DC supply option
- + Easy serviceability with front component access
- + Secure, tamper proof fixings

# IT Cooling



## OnRak™ 3 - 35kW



- + **88% saving in power input** an OnRak™ with EC fan and an EER of 144.7
- + **EER 114.45 (n); 183.02 (n+1). n+1 fan configuration for increased efficiency and resilience**
- + **Over 50% saving in energy when integrated with a free-cooling chiller**
- + Efficient rear door heat exchanger with 200mm footprint
- + Two configurations: (n) 35kW cooling (100% air volume); optional (n+1) 30kW cooling (75% air volume)
- + Designed to fit 42 - 47U racks
- + Supplied with integrated rack or adapted to fit a customer specific rack, with simple connections
- + Pressure differential management - maintaining pressure in the rear of the rack within the server design envelope
- + Flexible water connections maintain cooling when door is open
- + Hot swappable fan management
- + Water detection and automatic isolation
- + Self-regulating constant flow control eases commissioning
- + High efficiency aluminium fin heat exchanger with integral coil guard

## InRak™ 10 - 67kW



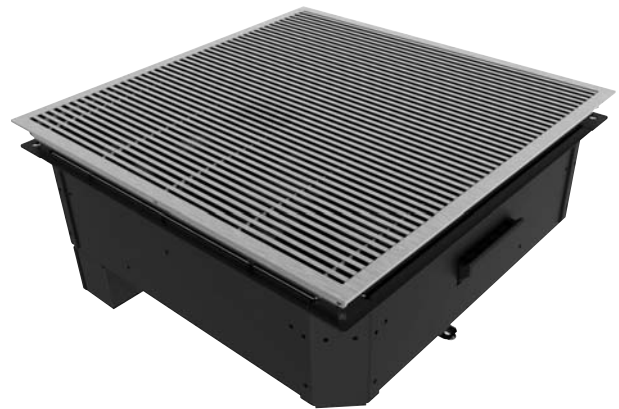
- + **EER up to 108.03 - n + 1, CW**
- + **70% energy saving p.a. with EC fan**
- + **17 - 100% fully modulated cooling for substantial energy savings when operating at part load**
- + Efficient in-row cooling solution for medium to high density applications
- + Positioned next to a single rack or within a row of racks
- + Directs cool air horizontally to the front of the racks, maintaining even cooling
- + n+1 fan configuration for increased efficiency and resilience
- + Aisle differential pressure control for resilience
- + Hot swappable fan management
- + Over 50% saving in energy when integrated with a free-cooling chiller
- + Up to 70% more efficiency with EC fans
- + Compact design for increased cooling per square metre
- + Dual power supply/static transfer switch (option)



## ECHO 2-20kW per rack



- + **67% energy saving compared with a conventional downflow system**
- + **50% less air volume, using less power by varying the air volume**
- + **Up to 95% free-cooling per annum**
- + Ensures the correct air quantity, temperature and pressure is fed to the server inlet
- + Variable rack load densities to a maximum of 20kW per rack
- + No chilled water/refrigerant connections at the rack or in the IT space
- + Control is led from rack level, rescheduling the Airedale ECHO CRAC and free-cooling chiller to optimise performance
- + n + 1 fans for complete confidence
- + Pressure differential management so ACE fans mirror the server fans
- + Eliminates hot spots
- + With no hot/cold aisle configuration, the technical space available for IT equipment is increased



## AireTile™ Up to 1.2m³/s



- + **Dynamic fan floor tile boosts cooling efficiency via active air distribution**
- + **Four model types with different levels of functionality**
- + Two fan types; low air flow EC fan (<math><0.74\text{m}^3/\text{s}</math>) and high air flow EC fan ( $1.2\text{m}^3/\text{s}$ )
- + Active air distribution maximises cooling efficiency
- + Eliminates hot spots, cool air directly targets heat load
- + Ideal pre or retrofit solution for additional cooling of high density racks and aisle containment
- + Reduces system running costs
- + Easy installation – units sit on raised access floor pedestals within floor void, minimum floor depth of 300mm (temperature control) or 400mm (constant air volume) required
- + Units can be standalone or networked (up to 64 units) via intelligent controls
- + Two power supplies as standard - 0 (230V /1ph/ 50H3), -1 (220V / 1ph / 60H3)

# Comfort



## StoreMaster™ 50 - 77kW



- + **Up to 70% more efficiency with EC fans**
- + **0 - 100% free-cooling as standard using full design air volume**
- + ETL listed (models featuring an inverter-driven condenser fan and return air fan)
- + Cooling and heat pump variants
- + 57 - 75kW heating capacity with reverse cycle (dual circuit heat pump variant only)
- + Packaged or split modules (evaporator / condenser)
- + Tandem scroll compressors on a single circuit for improved efficiency at part load (cooling-only version)

## Cassette 2 - 12kW



- + **Smaller models fit the space of a standard ceiling tile measuring 600mm<sup>2</sup>**
- + 11 models for flexibility in heating, cooling and air flow
- + Available in 2 pipe and 4 pipe configurations
- + Efficient AC backward curved fan technology
- + Low sound
- + Neat, compact design
- + Smart, unobtrusive
- + Fresh air connection
- + Heating based on a LPHW heating coil (option)
- + Electric heating (two pipe variant only) (option)



# Air Handling Units



## AireFlow™ 100 – 440kW



- + **100% free-cooling 365 days a year (UK)**  
**Significantly decreases operating costs**
- + **PUE below 1.1**
- + Available in five footprints between 100 and 440kW with either roof or wall connections
- + Two case sizes available: 65kW 4.1m x 5m x 2.3m (h x l x w) and 220kW 4.1m x 5m x 3.4m (h x l x w) - units can be matched to 440kW
- + Air flow rates of between 3m<sup>3</sup>/s and 21m<sup>3</sup>/s
- + Integrated inlet for fresh air for room pressurisation and air quality (F7 contaminant filtration available)
- + Wetted media adiabatic system, with UV sterilisation, requires low water consumption and no water treatment
- + Adiabatic activation temperature can be specified by user to prioritise energy consumption or water consumption
- + No air mixing within the system prevents contaminants entering your environment and eliminates need for 100% DX back-up cooling
- + N+1 redundancy
- + If water supply fails, DX or CW system has the capability to provide total required cooling load which removes need for water storage on site
- + G3 / G4 filtration
- + High efficiency EC fans with optimised control

# Chillers



## DeltaChill™ 110 - 1010kW

### DeltaChill™ FreeCool 140 - 1080kW



- + **ESEER up to 5.03 with EC fan option**
- + **Class A EER up to 3.60**
- + 282 models: 151 models (DCC) and 131 models (DCF)
- + Single, dual or triple independent refrigeration circuits, allowing 2 - 9 stages of cooling
- + Up to 95% free-cooling with DCF
- + Up to 38% more cooling/m<sup>2</sup> than Airedale's previous generation free-cooling chillers
- + Low sound ranges: Quiet and Extra Quiet
- + E-coated micro-channel coils reduce life cycle costs and footprint (all DCF models and DCC 450 - 960kW)
- + Modular, efficient 'V' frame fan coil module
- + Direct Effect Life Cycle (DELC) CO<sub>2</sub> equivalent emissions of ≤1000 kgCO<sub>2</sub>e/kW cooling capacity enable the DCC and DCF to contribute to a building achieving 1 BREEAM point
- + Inverter-controlled pump ensures constant water flow (option)
- + Automatic refrigerant pump down combined with leak detection enable the DCC and DCF to contribute to a building achieving 1 BREEAM point (option)

DCC = DeltaChill

DCF = DeltaChill FreeCool



## TurboChill™ 200 - 1800kW

### TurboChill™ FreeCool 200 - 1830kW



- + **ESEER up to 6.23**
- + **Free-cooling for up to 95% per annum with TCF**
- + **EER over 15.0 at part load an increase of 22%**
- + **Up to 23% saved in operating costs p.a compared to the leading competitor screw chiller (based on an annual cycle in Leeds, UK at 50% load)**
- + More than 230 models to choose from
- + TurboChill™ range designed for use with both R134a and the new low Global Warming Potential refrigerant R1234ze
- + Latest EC fan technology provides up to 20% energy savings
- + TT300, TT350 and TG310 oil-free compressors for enhanced heat exchange and variable speed control
- + Flooded evaporator for optimum system efficiency
- + Modular V-frame coil design and large surface area of micro channel heat exchangers
- + ETL listed

TCF = TurboChill FreeCool



Energy Saving  
Product of the Year



## TurboChill™ Water Cooled

150 – 1576kW



- + ESEER up to 8.86
- + Class A EER up to 5.4
- + Up to 111% more cooling kW/m<sup>2</sup> compared with leading competitor units
- + 3 module variants (R134a TT300 & TT350, R1234ze TG310)
- + 1 compact case size – 2000mm (H) x 1000 (W) x 1956mm (L)
- + Centrifugal TurboCor compressor – 30 – 100% variable speed control for tighter setpoint management and unbeatable efficiencies at part load
- + ETL listed
- + Compact spray type evaporator with integral subcooler – 67% reduced space claim (m<sup>2</sup>)
- + Scalable modular design
- + Range available with R134a refrigerant (1 BREEAM credit) and with R1234ze refrigerant (2 BREEAM credits)
- + Two sound variants; Regular Quiet (R), Extra Quiet (X)



## OptiChill™

500 - 1365kW

## OptiChill™ FreeCool

750 - 1365kW



- + ESEER up to 4.21  
with OPC, for optimum operating efficiency
- + Up to 30% increase in system efficiency with electronic expansion valves (option)
- + 52 models (OPC) and over 200 models (OFC)
- + Quiet and Extra Quiet ranges
- + Dual independent refrigeration circuits for resilience
- + Up to 95% free-cooling with OFC
- + 12.5°C increase in operational evaporating temperature range allowing supply water temperatures to be increased, thus raising the free-cooling threshold and giving enhanced compressor efficiency and reduced power input (OFC)
- + Intelligent head pressure control, optimises performance (OFC only)
- + Latest fan technology reduces sound and power input
- + 8 stages of cooling for more precise capacity match
- + Large surface area condensing coils
- + High efficiency shell and tube evaporator

# Chillers



## LogiCool™ FreeCool 20kW / 40kW



- + Up to 95% free-cooling per annum
- + Over 50% saving in energy compared with a conventional chiller
- + Compact footprint from 1.5m<sup>2</sup> minimises space claim
- + Variable capacity control for exact capacity match
- + Exceptional part load efficiencies
- + Direct-drive axial fan
- + Efficient plate evaporator with EEV refrigerant controls
- + Large surface area condensing coils maximise energy efficiency
- + Connects to direct rack cooling systems (individual or multi-rack)
- + Expandable, flexible solution as load increases
- + Modular design plus condensing coils and water connections at the rear, allow close side-by-side positioning
- + Reduced minimum system water volumes



## Ultima™ Remote Air Cooled\*\* Ultima™ Water Cooled 75 - 450kW



- + Up to 30% increase in system efficiency with optional electronic expansion valves
- + 75 - 450kW nominal cooling capacities
- + 45 models
- + Standard, Quiet and Extra Quiet variants
- + Dual independent refrigeration circuits
- + Compact unit footprint
- + High efficiency plate heat exchangers



## Ultima™ Compact 30 - 450kW

## Ultima™ Compact FreeCool 75 - 450kW



- + **Up to 62% free-cooling of UCFC DX performance**
- + 75 models (UCC) and 45 models (UCFC)
- + Standard, Quiet and Super Quiet variants
- + Single and dual circuit models (UCC 30 - 80kW); dual circuit on UCFC and all larger UCC models
- + Modulating head pressure control
- + R410A variant available
- + Electronic expansion valves for up to 30% increase in system efficiency (option)

UCC = Ultima Compact

UCFC = Ultima Compact FreeCool

# Condensers | Condensing Units



## BluCube™

Heat pump (10 - 48kW)  
Cooling only (13 - 40kW)



- + **Up to 30% increase in system efficiency with remote electronic expansion valve (REEV); standard with digital scroll compressor, an option on fixed capacity models**
- + **44% more cooling per m<sup>2</sup> average compared with a conventional CU system**
- + ETL listed (cooling only models)
- + Integrates with industry standard air handling units
- + 2 case sizes; 24 models
- + Operating envelope -20°C to +25°C in heating or -20°C to +48°C in cooling
- + Two pipe system reducing installation time and cost
- + Digital scroll compressor for 16 - 100% variable capacity (model dependent)
- + Modulating head pressure control for increased efficiency
- + Short-cased axial fan to overcome external static pressure when ductwork is required
- + Fits into a standard lift facilitating easy installation
- + Compressor attenuation reducing compressor sound by up to 12dBA (option)
- + Integrated condensate drip tray (heat pump models) (option)



## Air Cooled Condensers & Dry Coolers

See capacity below



- + **Up to 70% more efficiency with EC fans option on R410A models**
- + CR: 8 models (R410A)
- + C/CS: 10 models (R407C)
- + Dry coolers: 14 models
- + Small footprint, low profile for minimum space claim
- + Floor-mounted
- + Horizontal or vertical unit design for flexibility
- + Coil guards
- + Low sound levels
- + Discharge and liquid shut-off valves

### Capacity

CR: 12 - 174kW (R410A)

C/CS: 11 - 105kW (R407C)

DR: 10 - 100kW



## Condensing Units 3 - 80kW THR

### CU1 - CUS4 3 - 13kW THR



- + 8 models: Cooling only and heat pump variants
- + Reciprocating compressor
- + Wall mountable, freeing up floor space
- + Small footprint with slimline design
- + Head pressure control optimising efficiency

### CUS5 - 12 14 - 35kW THR



- + 5 models: Cooling only and heat pump variants
- + Floor mounted for external location
- + Low profile

### CUS15 - 30D 40 - 80kW THR



- + 7 models: Cooling only
- + Scroll compressors for reduced sound, higher efficiency and lower electrical starting currents
- + Floor-mounted for external locations
- + Small footprint



## Ultima™ Compact Condensing Unit 30 - 450kW THR



- + **Up to 30% increase in system efficiency with remote electronic expansion valve (REEV) option**
- + 75 models for configuration flexibility
- + Standard, Quiet and Super Quiet variants
- + Dual independent refrigeration circuit for resilience and reduced operating costs (single circuit option on 30 - 80kW)
- + R410A variant available

**THR: Total Heat of Rejection**

# Performance tested

And proven

**Quality is assured by our on-site, world-class testing facilities that set the standard as one of the most advanced testing centres of its kind within the global air conditioning industry. This facility is integral to our development process and ensures our team of designers and engineers conduct a rigorous test program to produce and improve each of our manufactured units.**

Airedale's dedicated test facility is the only purpose-built. Designed and built to exceed stringent international standards, our test centre is capable of testing a complete range of air conditioning equipment including precision air conditioning to 250kW and chillers up to 2MW.

We apply a consistent design philosophy which combines innovative sustainability with premium performance and efficiency across each range. Our state-of-the-art, on-site R&D laboratory is BS EN 14511 and BS EN 13053 compliant and allows us to test units for every application.

Our air conditioning units consistently offer some of the industry's leading proven environmental and cost performance figures, combined with the highest quality, reliability and service.



**“ We have a positive, responsible partnership with Airedale in which we share knowledge**

It is only through Airedale's continued site involvement that we can fine tune the system to such an extent. We don't mind spending capital expenditure to recoup such significant energy savings as these.

**Paul Lovegrove - General Affairs Assistant  
Manager, Epson**

**“ Energy efficiency was the crucial factor**

Airedale proved that its free-cooling chiller can save energy and is the right system for us. Anything that improves payback is of interest to the Society. We have also had good service from other Airedale products.

**Steven Ward - Premises Engineer, Yorkshire  
Building Society**

**“ EDF Energy is already seeing a PUE of 1.2**

I believe we are the first company in the world to install Airedale's advanced technology, the TurboChill™ FreeCool chiller. When the data centre is operating in free-cooling mode, the PUE has been measured at 1.2 and we expect that to reduce further as we install more equipment.

**Bob Finn - Programme Manager, EDF Energy**



# Intelligent controls

## Seamlessly managing your system

The control centre of each of our cooling systems is a sophisticated electronic microprocessor specially developed by Airedale. The intelligent microprocessor uses sensors which allow active components to interact. By integrating and sequencing components, the controller manages and optimises the system's performance, availability and power draw, giving the operator complete system control.

Fully-programmable via the control panel's user-friendly display, the microprocessor can be linked with all standard BMS protocols to:



**Trigger alarm messages**



**Send alarm/service messages via email or SMS using an interface**



**Operate time scheduling**



**Allow adjustment of temperature setpoints**

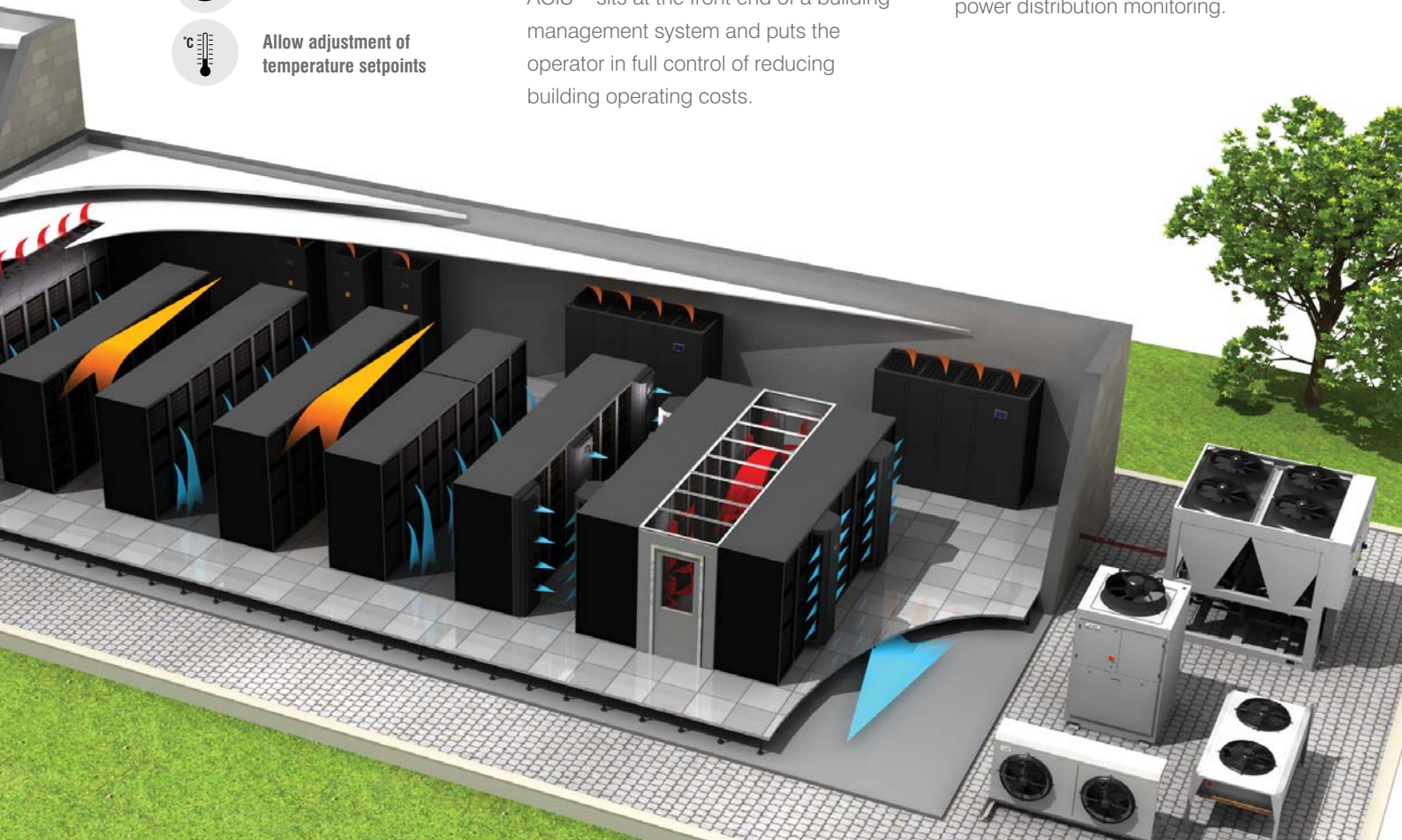


### ACIS™

ACIS™ is a building management system developed, by Airedale, which enables smart cooling and other building services, from any manufacturer, to be managed through a single, integrated solution across multiple sites and communication protocols.

ACIS™ sits at the front end of a building management system and puts the operator in full control of reducing building operating costs.

Through the click of a button on a PC, tablet or phone, intelligent information can be retrieved automatically allowing informed, data driven decisions to be made. With 24/7 access, ACIS™ provides an ideal solution for remote monitoring and maintenance, including live PUE, EER and COP calculations and power distribution monitoring.



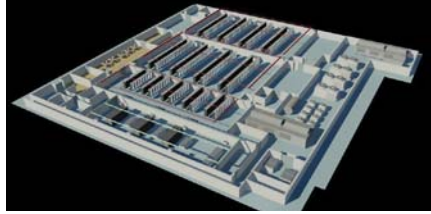
# Tailor-made for you

Working in partnership

**Customer focus is central to our core principles at Airedale. We will work closely with you to adapt our flexible systems to fit exactly to your specific cooling needs and energy requirements.**

Communication is key to understanding your requirements so we ensure you are kept informed and actively involved every step of the way.

Our ability to handle complex projects worldwide and meet the toughest of deadlines ensures we always deliver quality assured products and service, no matter how challenging the task.



## London Data Exchange £5m colocation facility

4 x 280kW DeltaChill™ FreeCool chillers supplying chilled water to 10 x chilled water 110kW SmartCool™ precision air conditioning units, each providing under floor cold aisle delivery at a constant 22°C to contained aisles

### Benefits:

- PUE less than 1.3
- Free-cooling for up to 95% of the year
- 13% less space claim
- N + 1 redundancy



## The University of Leeds HPC facility

3 x OnRak™ rear door heat exchangers each providing 28kW high density cooling

2 x 240kW Ultima™ Compact FreeCool chillers

### Benefits:

- OnRak™ is ideal for high density HPC facilities
- Slots into existing cooling loop; expandable
- Eliminated need to build a new computer room
- Extremely compact 200mm profile
- Free-cooling for up to 95% of the year
- 35% savings in energy



## National Gallery

6 x TurboChill™ chillers supplying chilled water to a primary circuit

The TurboChill™ replace existing R22 chillers with a bespoke, sequenced chiller solution, integrating new technologies; modern refrigerant and design criteria and increased control

### Benefits:

- ESEER 5.87
- £16,000 energy saving in first year
- Enhanced reliability and less maintenance
- Matches existing rooftop space and connections



## Victoria & Albert Museum Computer room

4 x 40kW EasiCool™ downflow precision air conditioning units

Each EasiCool™ provides under-floor cold aisle delivery of 120kW cooling and reliable environmental control of the data centre space.

### Benefits:

- N+1 redundancy
- Scalable and future proof

# Total support

Whenever you need it

At Airedale, we don't just manufacture and supply cooling and refrigeration products; we also provide a broad range of supporting services to ensure our customers receive the best possible aftersales care.

With more than 40 years' experience in business critical cooling, investing in an Airedale cooling or refrigeration solution means that you can benefit from our advice, expertise and technical support too. From design and selection, through to commissioning and beyond, we make sure your system reduces your total cost of ownership, whilst providing maximum availability and longevity.

## Service plans Maximising your system's effectiveness 24/7



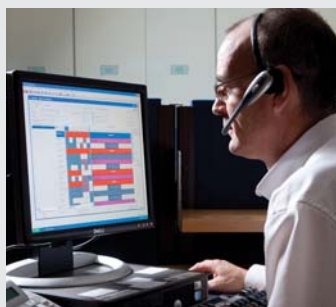
An Airedale service plan provides a planned, preventative maintenance package to sustain the optimum efficiency of your system, enabling the user to see real savings in energy costs and reduced carbon emissions.

With Airedale, you can rest assured that help is never far away. Our 24/7 emergency helpline and call out service is available 365 days of the year, ensuring that we are always on hand to provide expert advice and immediate help, day or night.

A guaranteed emergency response time means that a qualified Airedale engineer will be with you in no time, therefore maximising your system's uptime. Service plans also ensure F Gas compliance and incorporate a full parts and labour warranty for the first 12 months.

For more information visit [www.airedale.com](http://www.airedale.com)

\* \* For customers outside the UK, our international distributors trained by Airedale would be pleased to offer service on Airedale units



**Talk directly with  
an experienced  
engineer**

Find out how we design our systems to reduce your whole life costs. Our highly experienced engineers are adept at tailoring our systems to suit your requirements.

**+44 (0)113 239 1000**



**Have complete  
control of your site**

Customers with critical sites can benefit from our remote monitoring facility. Aftersales services include chiller sequencing, network setup and integration as well as a live demonstration and training centre at our head office.



**24/7 support;  
maintenance and  
spares**

Immediate help on hand to keep your critical cooling system operational. Realise the full potential of your system; improve its longevity and efficiency and be F Gas compliant. Avoid downtime with our fast, efficient spares service.



**Develop  
your skills**

Learn more about your cooling system by attending an air conditioning and refrigeration course in our purpose-built training school. Train on high-tech cooling systems and fully operational rigs in our dedicated workshops. Industry recognised courses also available. Email [training@airedale.com](mailto:training@airedale.com) for further details.



Distributed by:

