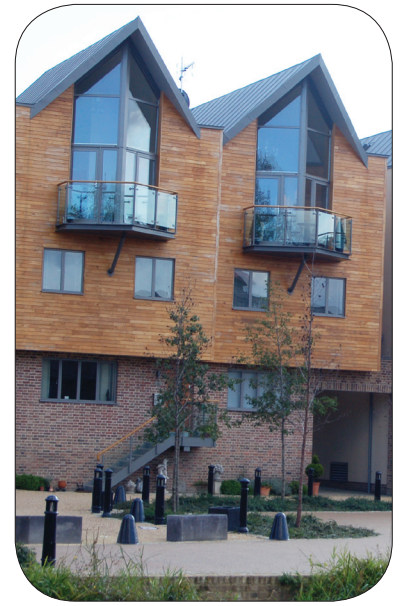
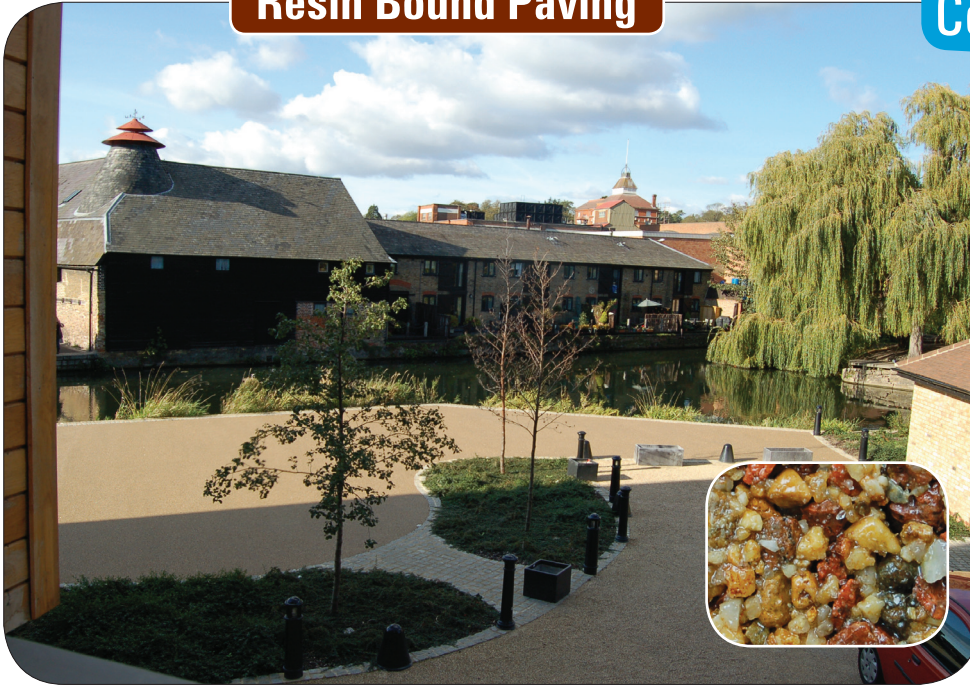


Resin Bound Paving

Commercial Project



Free draining resin bound paving has provided the ideal solution for an innovative building project in the county town of Hertford – modern technology that is perfectly at home in a conservation area

Project summary: With a unique development in the centre of Hertford nearing completion, groundwork contractor David White of White Contracting Limited in Hertfordshire needed to source a company that could provide an attractive, porous ground surface for the finishing touch – a park bordering the River Lea.

Dolphin Yard is a state-of-the-art development that includes 16 apartments, a public library and the park. The high level specification has attained Level 3 of the Sustainable Homes Code and yet is coupled with the use of traditional building techniques such as brick and block walls and wide lime mortar joints, to reflect the building style of this historic town.

The architect had specified resin bound paving, a product David had not used before. "Since the development is adjacent to the River Lea – literally one metre away – Hertfordshire County Council wanted a porous surface in case of flooding and had already approved resin bound paving. So I did some research on the Internet and found Clearstone," says David.

From the get-go David found Clearstone to be competitive, efficient and professional – the latter especially significant since several of the apartments were already occupied and work would need to be done with consideration towards the homeowners.

It took the Clearstone team just two days to lay the resin bound paving on the 310 m2 area. And, once laid, it was ready immediately for pedestrians to stroll and admire the views of the River Lea.

Dolphin Yard residents are "extremely pleased" with the look says David and commented on the professionalism of the Clearstone groundworks team during the building process.

"It's given a clean, crisp finish to the whole project. An excellent job – not puddling at all. Resin bound paving does exactly what it says on the box!" Not only does the work look attractive, "Clearstone kept to their word," says David. "They turned up when they said they would and completed on time. We will definitely be using them ourselves again and I am recommending them to a landscaping company I do a lot of work for and anyone who needs that sort of work done."

Clearstone
resin bound
permeable surfacing
specialists

clearstonepaving.co.uk



Project milestones

- New build project required permeable paving for its riverside park area at Dolphin Yard, Hertford
- Council approved the use of resin bound permeable paving
- The project attained Sustainable Homes Code Level 3
- Area 310 m², laid at a thickness of 18mm
- Aggregate colour used Brewers Malt

A satisfied customer

“ I had no choice but to use resin bound paving: it was a matter of *who* I chose to do the work. I think I made a very good choice. Some companies catch you out with extras but Clearstone is entirely different – they gave us a figure and stuck to it ”

David White, White Contracting Ltd.

Why resin-bound paving?

Resin-bound paving consists of aggregate material set in a polyurethane resin to create a smooth, tough, surface that's permeable to both air and water. Environmentally sensitive, long-lasting and attractive in appearance, it offers a wide range of benefits.

The surface of resin-bound paving is porous, allowing rainwater to drain away naturally. It's also flexible enough to allow movement, but tough enough to withstand high-pressure washing: this keeps the paving clean and weed-free.

Clearstone Paving uses a wide array of carefully selected natural aggregates such as real quartz, shingle or crushed granite in UV-stable colours.

The quality of the finish is superb, making it highly suitable for historic, heritage and prestige environments.

Why Clearstone Paving?

Clearstone is an established specialist company of resin bound paving designers and contractors committed to using a range of innovative materials including recycled aggregate. With very strong technical and design skills, superior project management and installation credentials, Clearstone can provide a durable and aesthetic finish for even the most extensive outdoor project.

Clearstone
resin bound
permeable surfacing
specialists

For more information, technical specifications and photographs of recent installations, please visit our website: clearstonepaving.co.uk
Or call **01273 358177** or email new@clearstonepaving.co.uk

**We install drives,
paths and terraces
for both domestic and
commercial projects**

Here is a selection of other commercial contracts undertaken by Clearstone Paving



Berkeley Homes: Paths and courtyards for All Saints Hospital heritage site conversion into private apartments. Eastbourne



DD Porter: Nuffield Hospital, Woodingdean, terrace with views over the South Downs. Brighton



Wimbledon AELTA: Press area private roof terrace and steps. Wimbledon, London



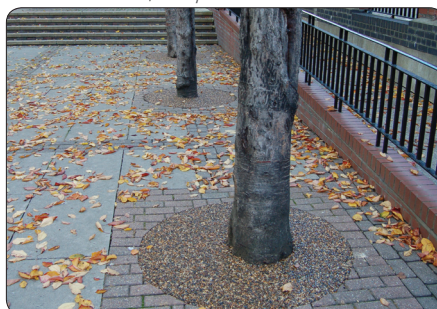
Pattom Projects: Re-styled home with sleek pale granite resin bound drive. Oxshott, Surrey



Cobalt Green Ltd: The Helix, contemporary new build project, Wimbledon, London



London Properties Ltd: Traditional styled new build with courtyard drive. Chorleywood, Hertfordshire.



Southern Housing Group: Tree pits. East End London.



Royal Ballet Lower School: Permeable pathways for Grade 1 listed building. Richmond Park, Richmond.