



Resin Bound Paving

Commercial Project



Clearstone Paving creates a winning finish for Cornerstone Properties at Wimbledon

Project summary: Originally paved with tiles that were outmoded and slippery, the outdoor press area of the UK's leading lawn tennis venue was in need of renovation. Playing host to media professionals, it had to be totally safe underfoot – and it needed to look good, too. The search for an appropriate solution led to Clearstone, who used permeable resin-bound paving to give the zone a championship-quality makeover.

With sweeping views of the Wimbledon tennis courts beyond, the roof terrace is an ideal location for hosting members of the press, but time had taken its toll on its tiled surfaces.

Not only was the old paving slippery after rain, but it had started to lift. Built over a suspended office ceiling, the terrace flexed due to heat expansion and contraction – but the tiles didn't. A number of tiles had loosened, shifted or cracked, causing puddles to form. To make matters worse, the tiles were not fully vitreous and some had suffered frost damage. Where water had seeped under the surface, further cracking and blowing had occurred. Several areas had become stained and discoloured.

Cornerstone Properties, property estate managers for Wimbledon, briefed Clearstone Paving, a Brighton and Hove based specialist in resin-bound paving, to carry out a complete renovation of the terrace, steps and entrance gate using safer, more attractive and more durable materials.

Realising that looks were important to this project, Clearstone offered the client an extensive palette of natural aggregate colour mixes to choose from. They selected a particularly attractive, warm-coloured shingle called 'Spiced Barley'. Clearstone's technicians used this to create a seamless resin-bound surface that perfectly complements the dark green walls of

the surrounding buildings. They also faced the steps with stainless steel risers and finished the treads with TrepE edging for a clean, elegant look that will not tarnish or corrode over time. The entire project was completed to deadline, and within budget.

Resin-bound paving proved the perfect solution. With a non-slip surface that's flexible enough to resist cracking, this innovative type of paving is also fully permeable, allowing water to seep away from the terrace to the surrounding drainage channels, long before puddles start to form. In this corner of the venue at least, **rain will never stop play . . .**

clearstonepaving.co.uk

Clearstone®
resin bound
permeable surfacing
specialists



Why resin-bound paving?

Resin-bound paving consists of aggregate material set in a polyurethane resin to create a smooth, tough, surface that's permeable to both air and water. Environmentally sensitive, long-lasting and attractive in appearance, it offers a wide range of benefits.

The surface of resin-bound paving is porous, allowing rainwater to drain away naturally. It's also flexible enough to allow movement, but tough enough to withstand high-pressure washing: this keeps the paving clean and weed-free.

Clearstone Paving uses a wide array of carefully selected natural aggregates such as real quartz, shingle or crushed granite in UV-stable colours.

The quality of the finish is superb, making it highly suitable for historic, heritage and prestige environments.

Why Clearstone Paving?

Clearstone is a new and dynamic company of paving designers and contractors committed to using a range of innovative materials including recycled aggregate. With very strong technical and design skills, superior project management and installation credentials, Clearstone can provide a durable and aesthetic finish for even the most extensive outdoor project.

Project milestones

- Resin-bound surface laid on a roof over offices
- Project completed, including tile removal, preparation and laying in 10 days
- Area 250 m², laid at a thickness of 18mm
- Aggregate colour used 'Spiced Barley'
- Edging Trep-E by Schlüter-Systems UK

A satisfied customer

“ With Clearstone Paving's attention to detail and careful pre-contract planning, the project was successfully completed, both within time and budget, thereby minimising disruption to the area affected. The finished product has received many favourable reviews and provides a practical solution, combined with pleasing aesthetics. ”

Dan Haymann, director of Cornerstone Properties



Before: the terrace flexed due to heat expansion and contraction, causing the tiles to lift.



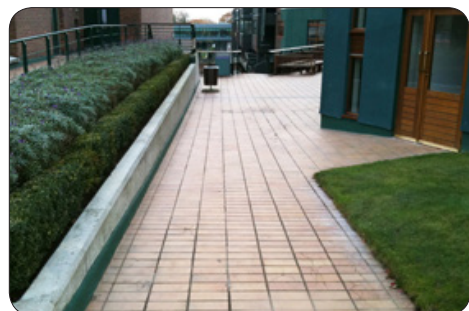
After: seamless flex tolerant resin-bound paving



Before: cracked, frost damaged and stained tiles



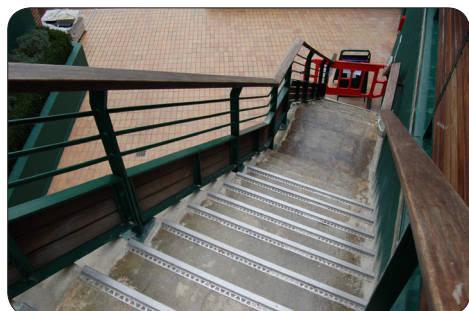
After: steps with stainless steel risers, in-filled with resin-bound paving, which will not tarnish or corrode over time



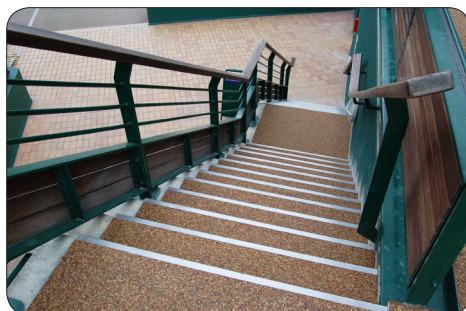
Before: outmoded and slippery tiles after rain



After: smooth, safe permeable resin-bound paving



Before: cracked, frost damaged and stained tiles



After: renovated steps with good grip

Clearstone[®]
resin bound
permeable surfacing
specialists

For more information, technical specifications and photographs of recent installations, please visit our website: clearstonepaving.co.uk
Or call **01273 358177** or email new@clearstonepaving.co.uk

We install drives, paths and terraces for both domestic and commercial projects



Riverside park laid with Clearstone Brewers Malt resin bound paving at a new build project in Hertford