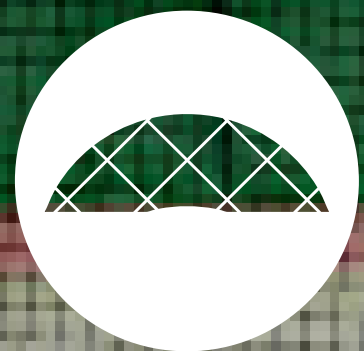


EXTEND YOUR PLAYING SEASON

ROCKLYN PROVIDE A FULL SERVICE FROM
SURVEY, DESIGN, GROUNDWORKS, DOME
INSTALLATION AND MAINTENANCE SERVICE.



A cost-effective and flexible means of covering outdoor sporting areas permanently (or during the winter months). The structure comprises 2 or 3 'skins', held in place by a steel cable net which is anchored at multiple points around the perimeter.

The skins and structural cable-net assembly are then inflated by the introduction of positive air-pressure, provided by powerful blower units, and managed by a central control system. Your dome may include optional items such as heaters, insulation, back-up generators and specialised lighting controls.

Recent Installations include CIYMS Tennis Club and Windsor Lawn Tennis Club in Belfast. The domes can also be used for many other sports including football, basketball, swimming pools, golf ranges, indoor hockey and beach volleyball.

Rocklyn domes have many unique advantages including a patented 'pressure-frame' which provides a complete seal at the base of the structure. Other benefits include, a long lifespan, efficient internal lighting system, ability to withstand extreme weather conditions, a coloured 'hitting' background and excellent acoustics.

Rocklyn provide a full service from survey, design, groundworks, dome installation and maintenance service.

“ROCKLYN DOMES PROVIDE A LONG-LASTING AND FLEXIBLE MEANS OF COVERING OUTDOOR SPORTING AREAS. THEIR ADVANTAGES INCLUDE THE ABILITY TO WITHSTAND EXTREME WEATHER CONDITIONS AND THE UNIQUE ‘PRESSURE-FRAME’ SYSTEM WHICH SEALS THE STRUCTURE AT THE BASE!”





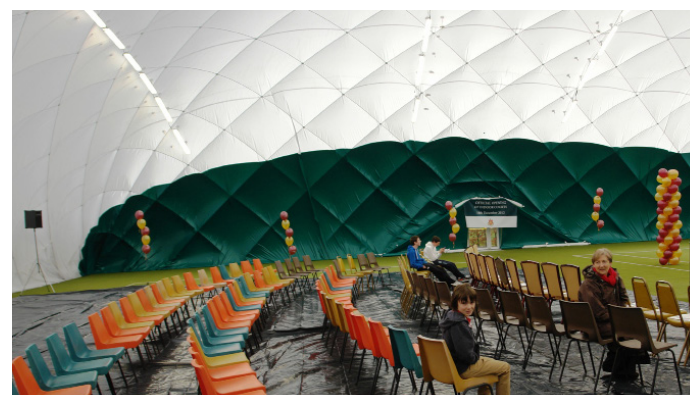
AIR DOMES

Rocklyn provide:
Detailed Site Survey; Design,
Specification & Costing;
Groundworks (if required),
Installation & Maintenance.

FEATURES AND BENEFITS.

Over 250 installations across Europe, including Novak Djokovic's own tennis academy! The preferred design in Germany and Austria.

Double-skin design provides strength and durability not found in other cabled structures (German-made PVC inner-skin has a minimum life expectancy of 20 years).



FEATURES AND BENEFITS.

Steel cable-net absorbs structural stresses, eliminating the risk of large/catastrophic tears to the membrane and allowing the use of lighter, more translucent materials.

High translucency inner-skin eliminates the requirement for internal lighting during daylight hours, reducing running costs by 30-50%.

Outer skin provides protection against UV and dust/pollution, affording a greatly increased overall life span in comparison to other PVC structures.

Extremely low footprint at base of structure allows deployment in very confined spaces.

Unique, non-blinding, direct-lighting system is fixed to structure ceiling, removing the need for obstructive floor-standing, or in-effective 'up-lighting' systems.



FEATURES AND BENEFITS.

Patented 'pressure-frame' provides a complete seal at base of the structure. No sand bags!

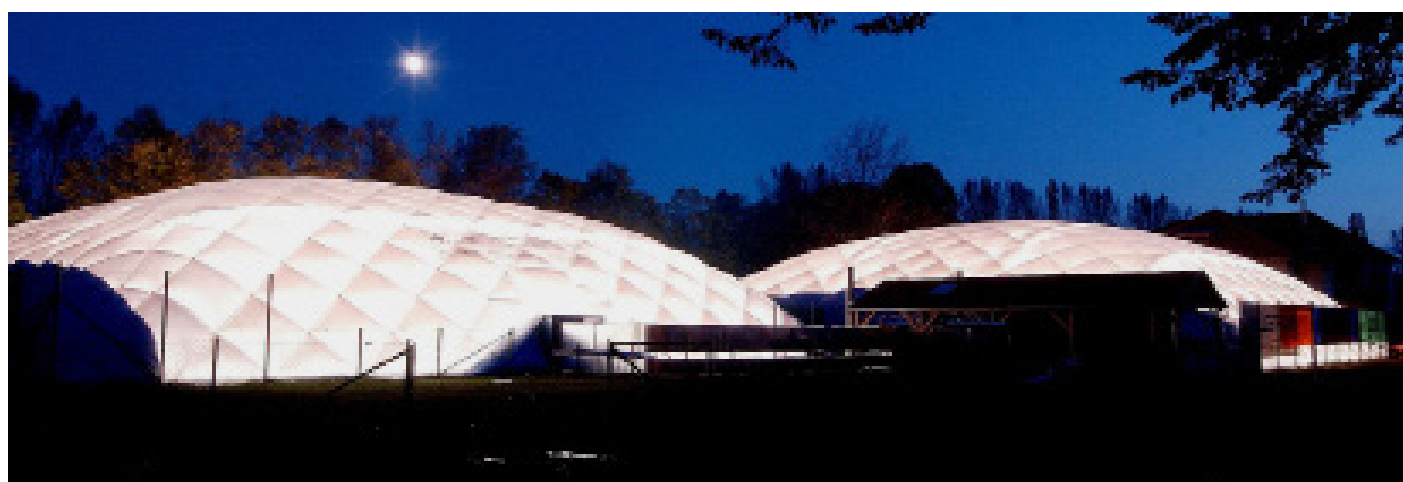
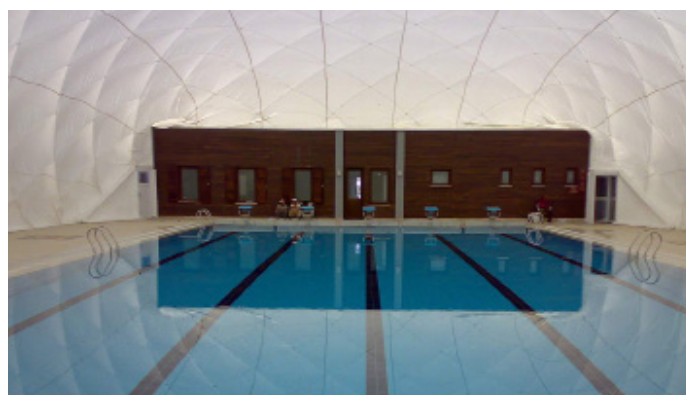
Revolving or air-lock entrance doors as standard. Emergency exit doors available.

Quick and easy installation / dismantling (1 day maximum). Easy removal & storage.

High resilience to extreme weather conditions (wind, snow & cold) not found in other structures. Aviation-grade instruments monitor weather conditions and react accordingly.

In calm conditions, blower units operate at only 30% capacity, greatly reducing running costs.

Excellent acoustic qualities resulting from multi-directional reflective profile.



FEATURES AND BENEFITS.

Heating and back-up generators available as optional extras.

Our confidence is backed by an unbeatable warranty: 5 year manufacturer's warranty on PVC inner-skin and steel cable-net; 2 year manufacturer's warranty on all other components.

All domes are manufactured to individual site requirements. Detailed site surveys will be conducted, and site-specific drawings produced prior to manufacture.

Assistance with the planning process is available. Free planning-approval assessment (we will assess your circumstances, and advise the likelihood that planning approval will be granted).

Comprehensive maintenance contracts ensure on-going service and support.

Rocklyn have offices in Belfast, Kildare and Bristol ensuring the highest level of service and support throughout Ireland.

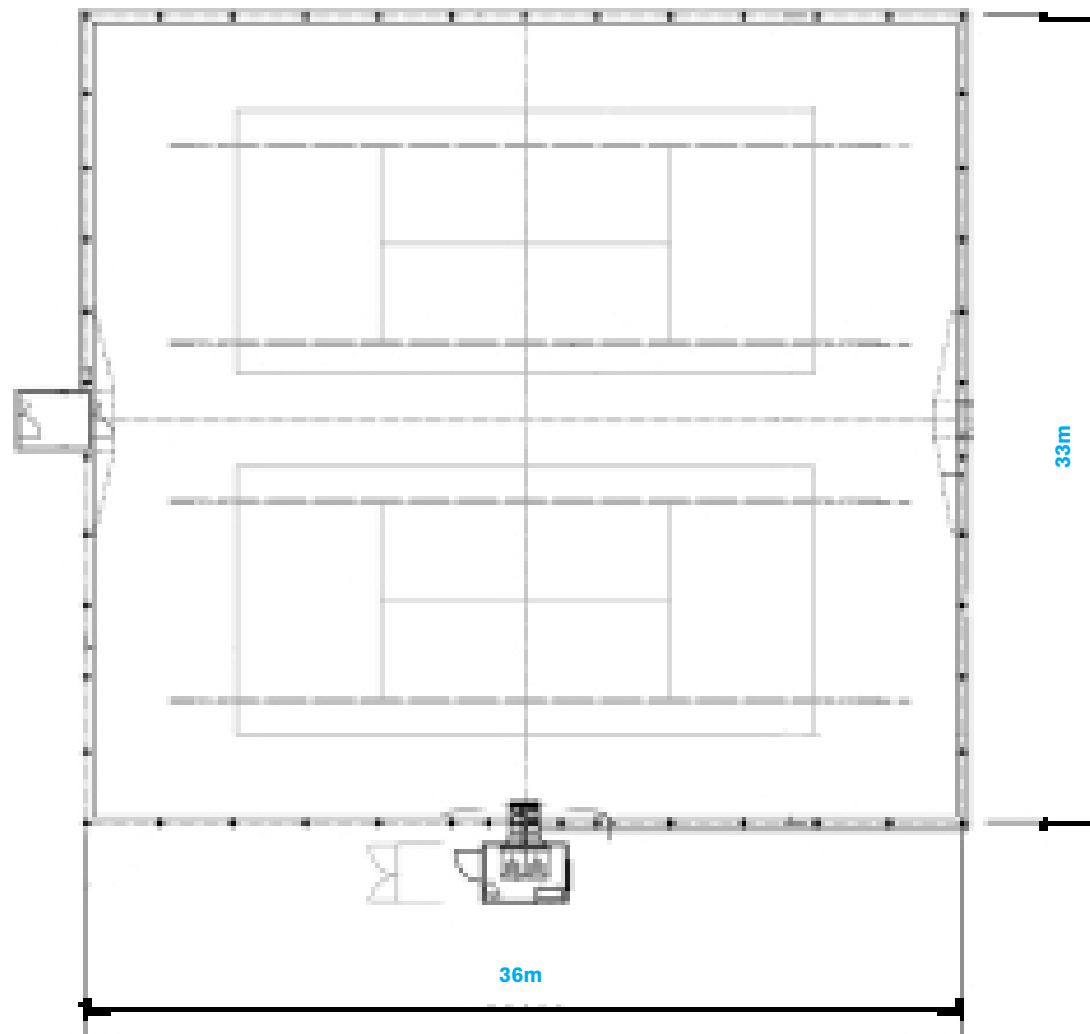




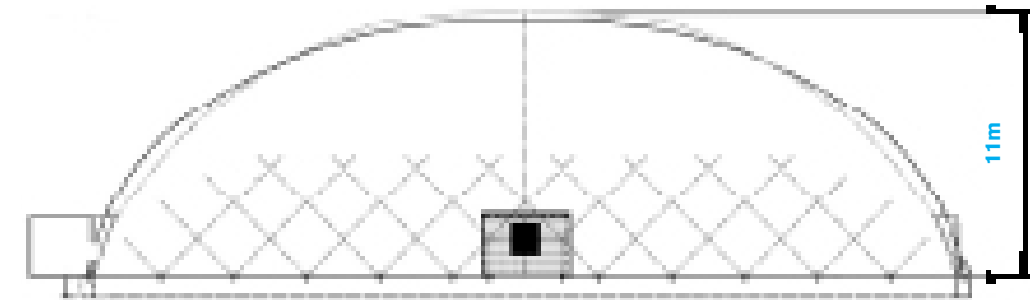
STANDARD OPTIONS

- Main cover – PVC coated polyester fabric 550 gr/m²
- Heat insulation – PE foil.
- Protective foil – PE foil.
- Steel Cable net.
- Ground foil – for installation on clay courts.
- Main blower device – 2 blowers our capacity 300pa.
- Heating unit – system block with heat exchanger.
- Burner – Weishaupt siemens heat regulator.
- Air channel circulation unit.
- Emergency power unit – diesel backup generation.
- Control panel – central switch for control of devices – air pressure, heating and lighting.
- Anemometer – safety element to increase pressure during strong wind and storm conditions.
- Revolving door.
- Air-lock door.
- Emergency door.
- Lighting system (300-700 Lux).
- Steel anchors for cable net, anchors for pressure/volume.
- Smoke detectors.
- SMS early warning system (diesel low, dome pressure changes)

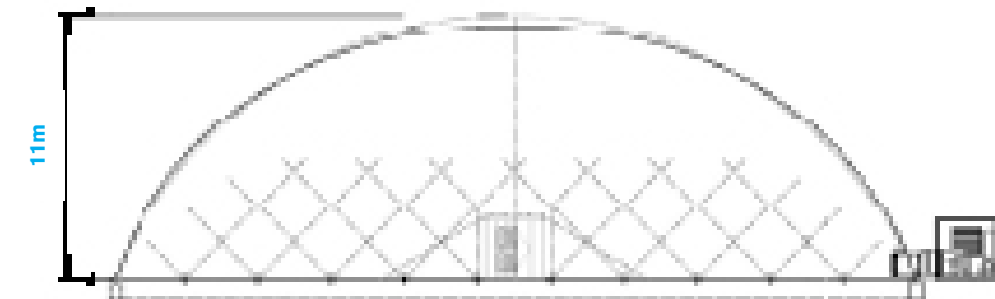
PLAN VIEW:



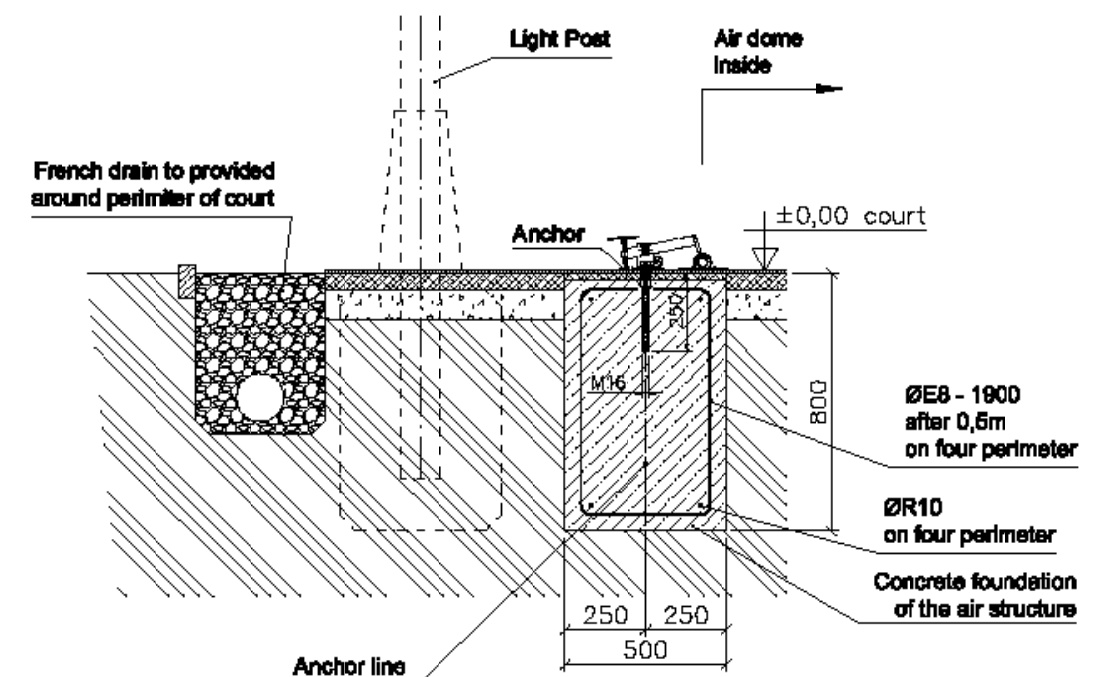
FRONT:



BACK:



SECTION DETAIL:





CIYMS GUARANTEE PLAY WHATEVER THE WEATHER



CASE STUDY:

In December 2011 Rocklyn installed a 3 court dome for CIYMS tennis club in Belfast.

- Dome size 48.8m x 37.5m x 10.6m.
- Blue hitting background.
- 90 Fluorescent lights provide excellent nighttime lighting conditions.
- The dome is in place from October to April and stored in the summer months.
- Back-up generator.
- SMS warning system.



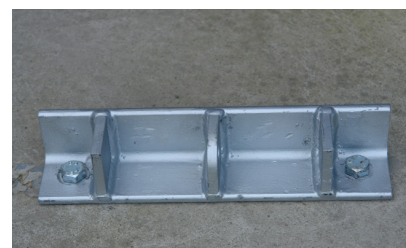
“OFFERING A GUARANTEED WINTER PROGRAMME, IN A COMFORTABLE ENVIRONMENT, IS PROVING TO BE A HUGE ADVANTAGE TO THE JUNIOR AND SENIOR SECTIONS OF THE CI TENNIS CLUB. THE PRODUCT, SERVICE AND RELIABILITY PROVIDED BY ROCKLYN IS REASSURING AND HAS EXCEEDED OUR EXPECTATIONS.”

Richard Barnes
Secretary Manager
CIYMS, Belfast





ANCHORING SYSTEM



CABLE NET ANCHOR



PRESSURE FRAME ANCHOR



CONTROL PANEL



CONTROL PANEL FRONT



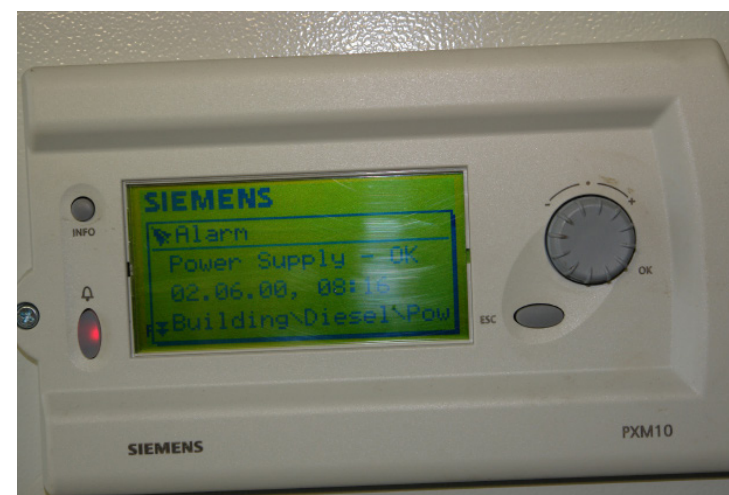
REVOLVING DOOR ENTRANCE



SMS ALERT SYSTEM



BLOWER UNIT



DOME CONTROLLER



COLOUR HITTING BACKGROUND