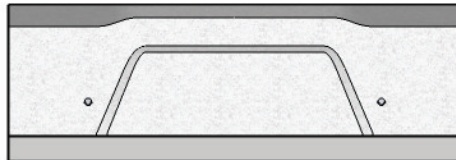
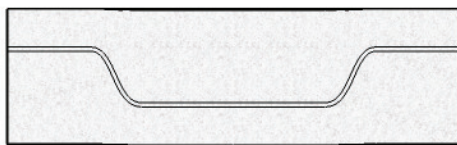
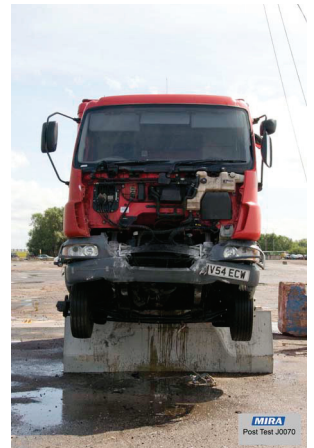
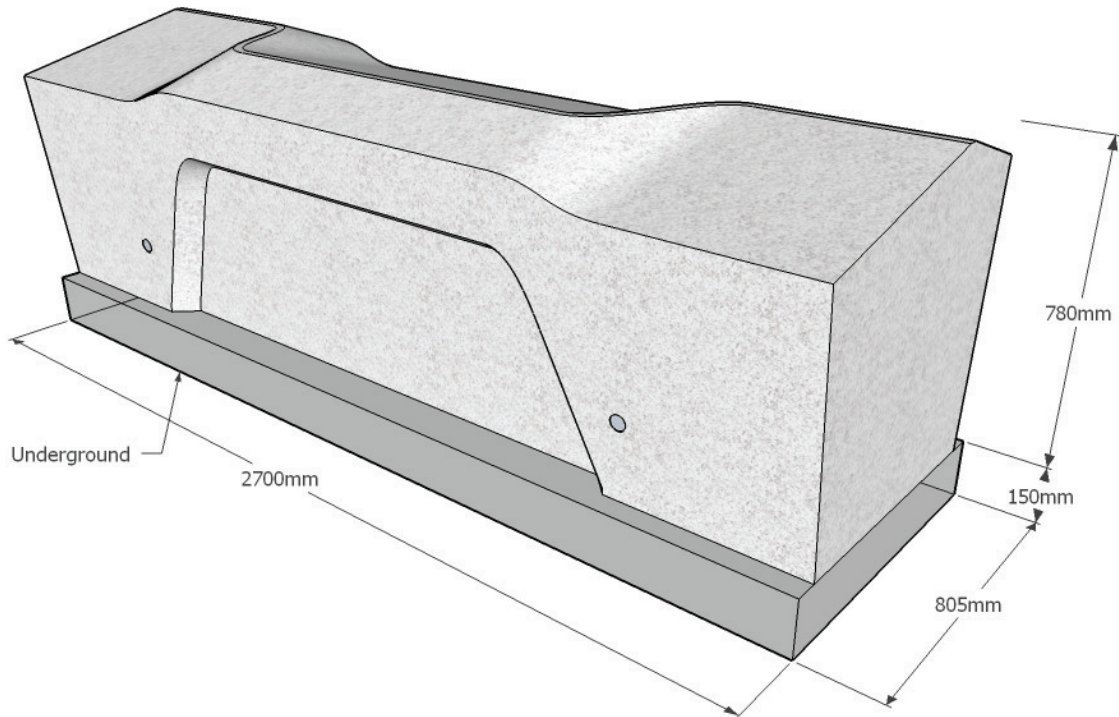




CAMDEN anti-ram bench



SPECIFICATIONS

composition

Bench material - Exposed aggregate concrete. Available effects - White or black smooth concrete; Limestone (shot peened); Yellow granite (shot peened); Blue granite (shot peened); Black granite (shot peened) (*Pics - Top L to Bot R*)
Internal reinforcement - Galvanised steel frame

dimensions

Metric length 2700mm | width 805mm | height 780mm*
Imperial length 8' 10½" | width 2' 7½" | height 2' 6½"

*Not including 150mm below ground

approx weight 4050kg

finish

Waterproofed / Anti-graffiti

PAS 68 rating

7.5T @ 30mph

foundation

1 no. pad 2900 x 1000 x 400 mm in C20 concrete (recommendation only)

handling

Please observe health & safety lifting guidelines. A fork lift or crane will be required for off loading and positioning of items

maintenance

Depends on usage and position. All elements will require cleaning annually