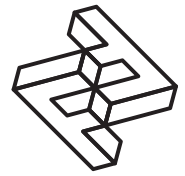
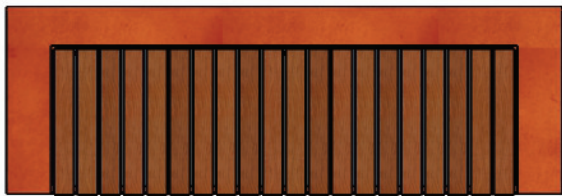
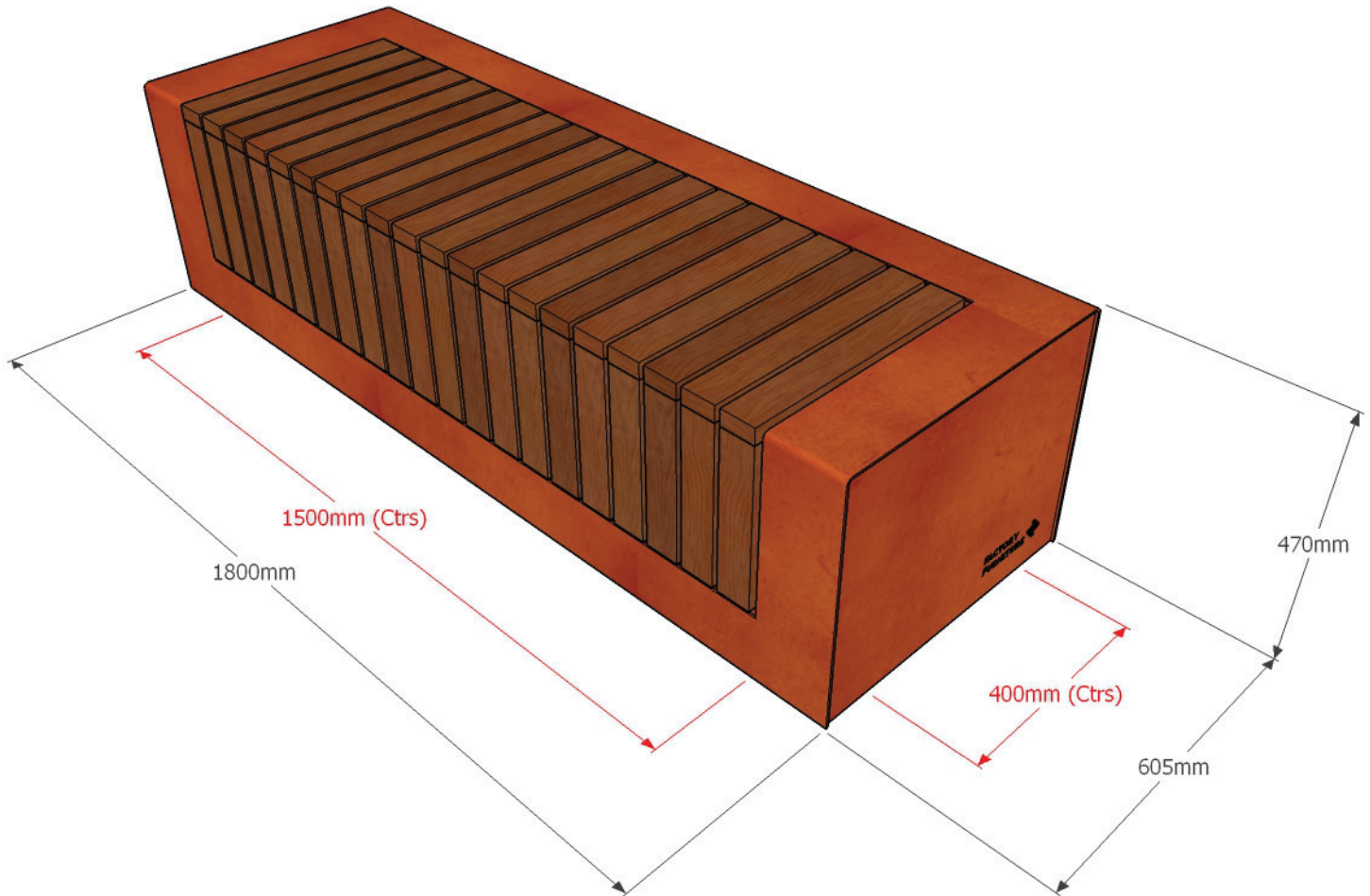


FACTORY FURNITURE



Steel Single RAKT Bench (1.8x0.6m)



SPECIFICATIONS

Composition

Slats - FSC® certified tropical hardwood

Body - Corten (option for hot dipped galvanised mild steel)

Finish

Natural finish as standard. (Oil or microporous woodstain available on request). Galvanised mild steel option - polyester powder coated finish (colour - grey as standard or to customer specification)

Dimensions

Metric L - 1800mm | W - 605mm | H - 470mm

Imperial L - 5' 11" | W - 2' 0" | H - 1' 6½"

Approx weight 134kg



Fixing centres & method

1500mm (4' 11") x 400mm (1' 3½") - fixed with 4 no. sleeve anchors per bench

Foundation

2 no. pads 300 x 300 x 700 mm in C20 concrete (recommendation only)

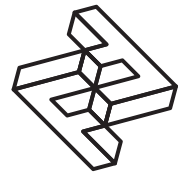
Handling

Please observe health & safety lifting guidelines. A fork lift or crane will be required for off loading and positioning of items

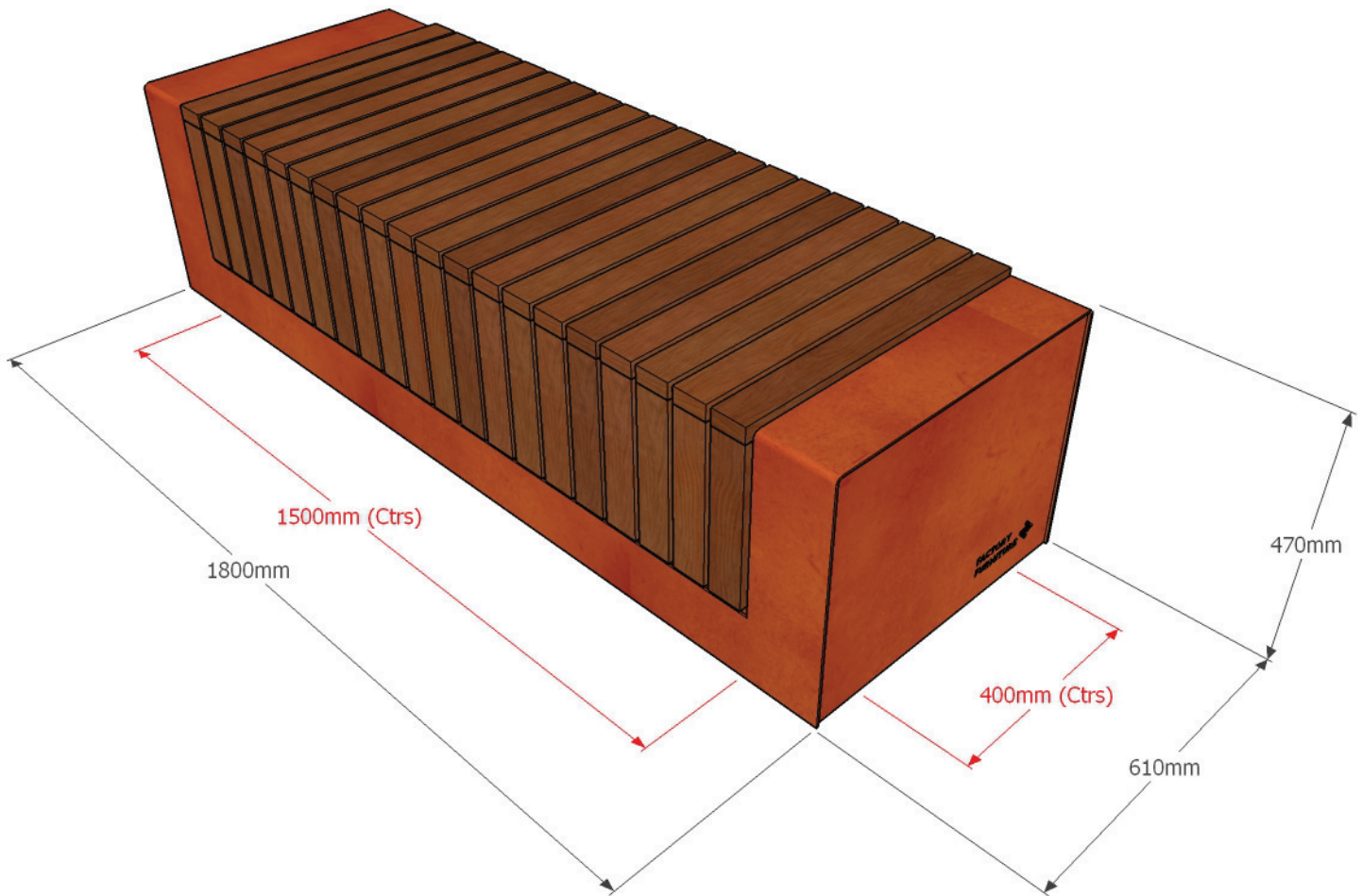
Maintenance

Depends on usage and position. All elements will require annual cleaning. Wood should be treated every other year if coated. Corten steel requires no maintenance. Galvanised and powder coated mild steel parts only require maintenance if damaged.

FACTORY FURNITURE



Steel Double RAKT Bench (1.8x0.6m)



SPECIFICATIONS

Composition

Slats - FSC® certified tropical hardwood

Body - Corten (option for hot dipped galvanised mild steel)

Finish

Natural finish as standard. (Oil or microporous woodstain available on request). Galvanised mild steel option - polyester powder coated finish (colour - grey as standard or to customer specification)

Dimensions

Metric L - 1800mm | W - 610mm | H - 470mm

Imperial L - 5' 11" | W - 2' 0" | H - 1' 6½"

Approx weight 149kg



Fixing centres & method

1500mm (4' 11") x 400mm (1' 3½") - fixed with 4 no. sleeve anchors per bench

Foundation

2 no. pads 300 x 300 x 700 mm in C20 concrete (recommendation only)

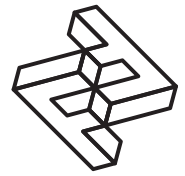
Handling

Please observe health & safety lifting guidelines. A fork lift or crane will be required for off loading and positioning of items

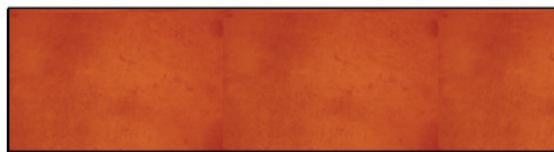
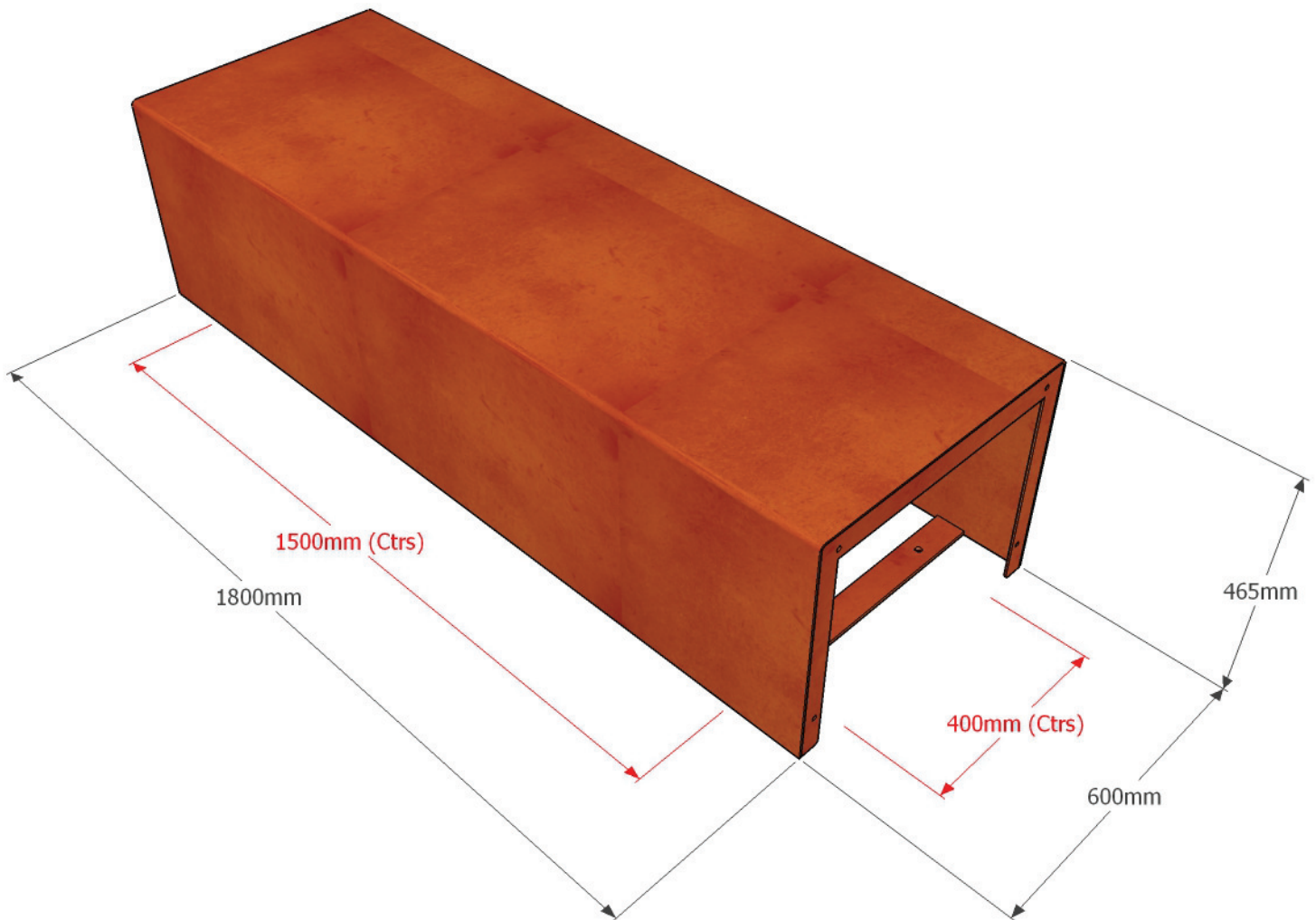
Maintenance

Depends on usage and position. All elements will require annual cleaning. Wood should be treated every other year if coated. Corten steel requires no maintenance. Galvanised and powder coated mild steel parts only require maintenance if damaged.

FACTORY FURNITURE



Steel Link RAKT Bench (1.8x0.6m)



SPECIFICATIONS

Composition

Corten (option for hot dipped galvanised mild steel)

Finish

Galvanised mild steel option - polyester powder coated finish (colour - grey as standard or to customer specification)

Dimensions

Metric L - 1800mm | W - 600mm | H - 465mm

Imperial L - 5' 11" | W - 1' 11½" | H - 1' 6½"

Fixing centres & method

1500mm (4' 11") x 400mm (1' 3½") - fixed with 4 no. sleeve anchors per bench

Approx weight 98kg

Foundation

2 no. pads 300 x 300 x 700 mm in C20 concrete (recommendation only)

Handling

Please observe health & safety lifting guidelines. A fork lift or crane will be required for off loading and positioning of items

Maintenance

Depends on usage and position. All elements will require annual cleaning. Corten steel requires no maintenance. Galvanised and powder coated mild steel parts only require maintenance if damaged.