



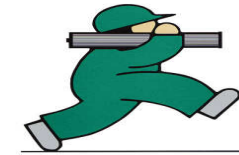
Health & Safety Engineering

Thermal Spraying Solutions

Health & Safety Engineering



Introduction



**Total Filter
Management**

**Health & Safety
Engineering supply
complete turnkey
packages for safe
containment of
thermal Spraying
processes.**



Health & Safety Engineering



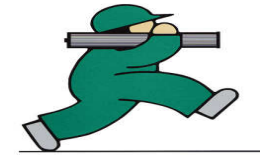
Total Filter
Management

Health & Safety – Who are

- **Established for more than 25 years**
- **Major Supplier Of Filtration Technology to the Thermal Spray Industry**
- **Offices – Sutton-In-Ashfield**
- **Team Of Experienced Engineers**
- **Provider Of Total Filter Management To End Users.**

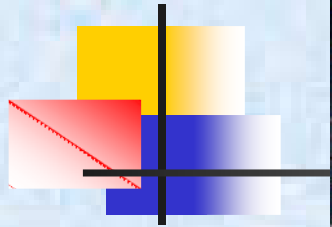


Products and Services

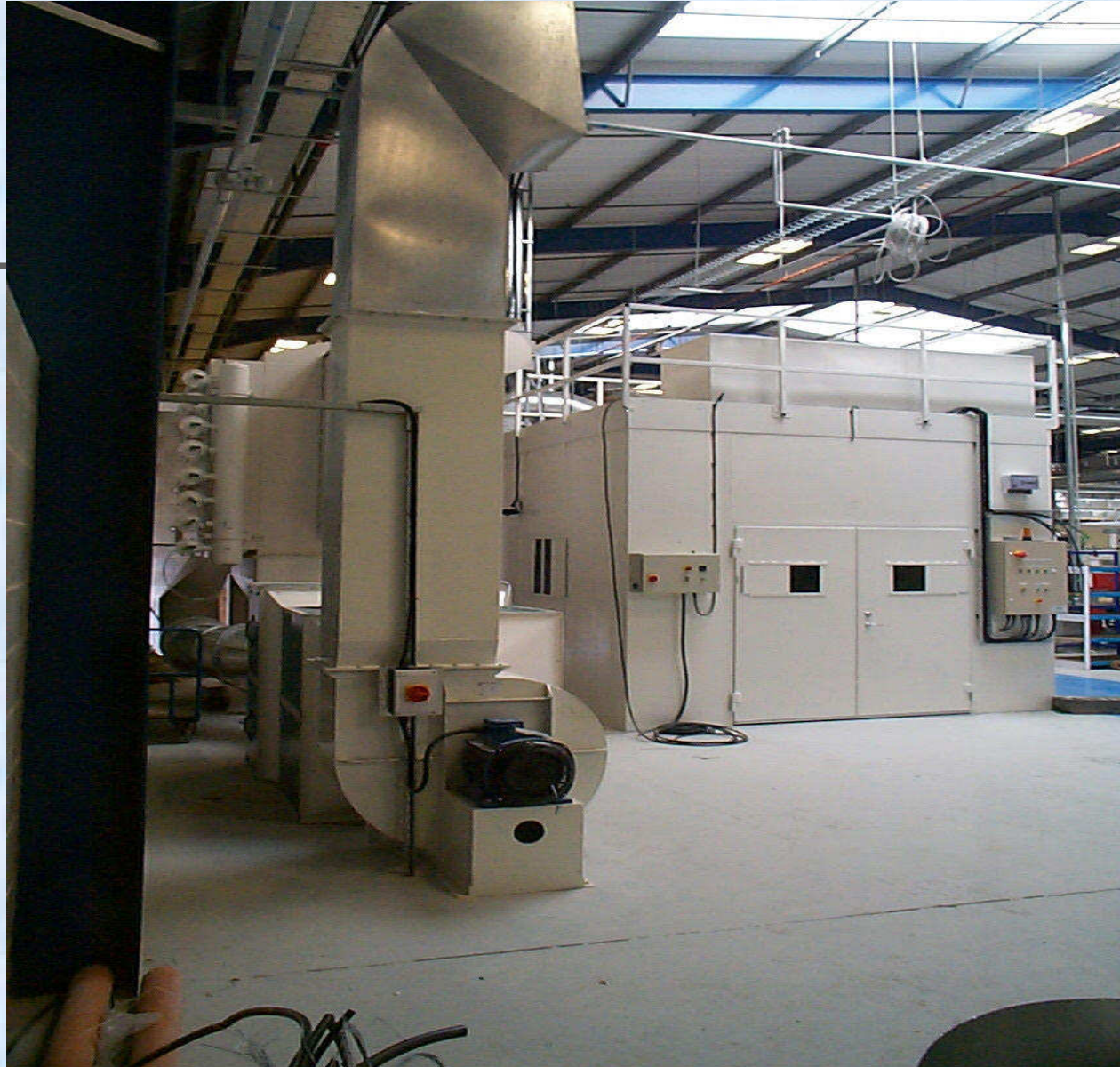


Total Filter
Management

- **Complete Thermal Spray Packages**
- **Acoustic Enclosures**
- **Dust Extraction Filter Units**
- **Control Packages, Gas Detectors and Safety Interlocks**
- **Spares Service & Maintenance Packages**
- **Complete Turnkey Projects**



Health & Safety Engineering

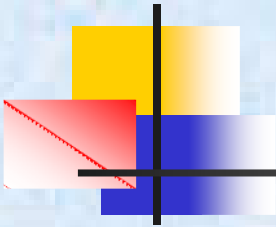


Health & Safety Engineering

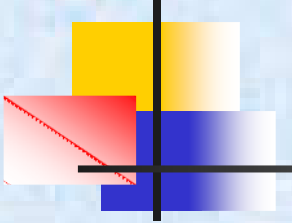
Acoustic Enclosures

- **High Specification Metal Acoustic Panel Construction**
- **Noise Reduction To Less Than 80 dBa @ 1 metre**
- **Wide Roof & Front Access Doors**
- **Load Bearing Mezzanine Roof For Additional Storage**
- **Complete Site Installation.**





Health & Safety Engineering



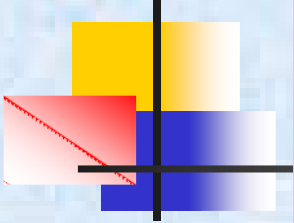
Health & Safety Engineering

Dust Extraction Equipment

- **High Efficiency Reverse Jet Cartridge Filter Units**
- **Secondary HEPA Filters For Energy Saving Return Air**
- **Turnkey Packages Including Fans, Ducting and Controls**
- **Total Filter Management Packages**



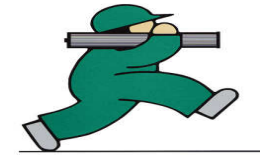
Health & Safety Engineering



Health & Safety Engineering



Control Packages



Total Filter
Management

- **Turnkey Control Systems For Booth & Dust Extraction Unit**
- **Complete Electrical Installation**
- **Gas Detectors & Safety Interlocks**



Gas Detection

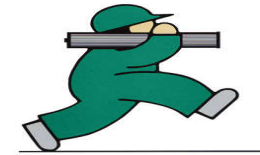
- **Hydrogen**
- **Oxygen Depletion**
- **Oxygen Enrichment**
- **Carbon Dioxide**



Safety Interlocks

- **Gas Detected**
- **Door Locks**
- **Purge Cycles**
- **Spray Interlocks**
- **Robot Interlock**

Spares Service & Maintenance



**Total Filter
Management**

- **LEV Tests**
- **Filter Cartridge Supply and Replacement**
- **Inspection and Testing of Safety Interlocks**
- **Repair of Dust Collector Components**
- **Troubleshooting**



Total Filter
Management

LEV & COSHH assessments.

- **Inspection Annually and Full Report**
- **Airflow and pressure measurement.**
- **Validation that measurements meet required values.**
- **Inspection of complete system.**
- **Function test of controls and instruments.**
- **Fault identification.**
- **Adjustment where required.**

Health & Safety Engineering



Preventative Maintenance Rectification



Total Filter
Management

- **Clearing Of Blocked Ducting**
- **Replacement Of Filter Cartridges**
- **Repair To Pulsing System**
- **Replacement of Fan Motors & Impellers**
- **Replacement of Explosion Relief Doors**
- **Renewal Of Seals**

Health & Safety Engineering

