



welcome



FORMICA® Door Collection



## WELCOME TO THE FORMICA® Door Collection

Formica® High Pressure Laminate, offers a practical solution for interior doors. Its inherent properties make it ideal for functional, high-traffic applications.

- Highly resistant to stains, impact, water and scratches
- Easy to maintain
- Hygienic and easy to clean
- Impervious to moisture
- Chemical Resistant
- FSC®, Greenguard and Carbon Trust certified as standard

The new **FORMICA® Door Collection** offers products with the strength and durability that your projects need to maintain their quality and beauty over time.



Chemical resistant



Postform Grade HGP



Flat bonding



Scratch resistant



Hygienic



Water resistant



Impact resistant



Stain resistant



- 186 decors, including 60 new introductions
- 4 sheet sizes specific to interior doors
- 4 surface finishes:
  - Matte 58™, Naturelle™, Linewood™, Puregrain™
- Magnetic Laminate for multifunctional surfaces
- Younique® by Formica Group customised visuals



## PUREGRAIN™

PREMIUM FINISH by FORMICA GROUP

**NEW**

The timeless and premium finish **Puregrain™** brings the natural feel of lightly brushed or oiled woodgrains to your projects when your environments need a classic touch.

*Refer to pages 14 - 17 for full sheet woodgrain structures and pages 12 and 13 for woodgrain samples.*



## NATURELLE™

PREMIUM FINISH by FORMICA GROUP

**Naturelle™** provides a near natural woodgrain look with an elegant matt finish. **Naturelle™** is available as a premium finish on selected woodgrains.

*Refer to availability table on pages 18 - 19 for details and page 12 - 13 for samples.*



## LINWOOD™

SURFACE FINISH by FORMICA GROUP

**NEW**

Velvety smooth to the touch, **Linwood™**, faithfully reflects the beauty of wire brushed or sandblasted woods in a variety of woodgrains. **Linwood™** is also available as a premium finish on 30 Colors.

*Refer to pages 14 - 17 for full sheet woodgrain structures and pages 12 and 13 for woodgrain samples.  
Refer to availability table on pages 18 and 19 for details and page 13 for Linwood on Colors sample.*



## MATTE 58™

SURFACE FINISH by FORMICA GROUP

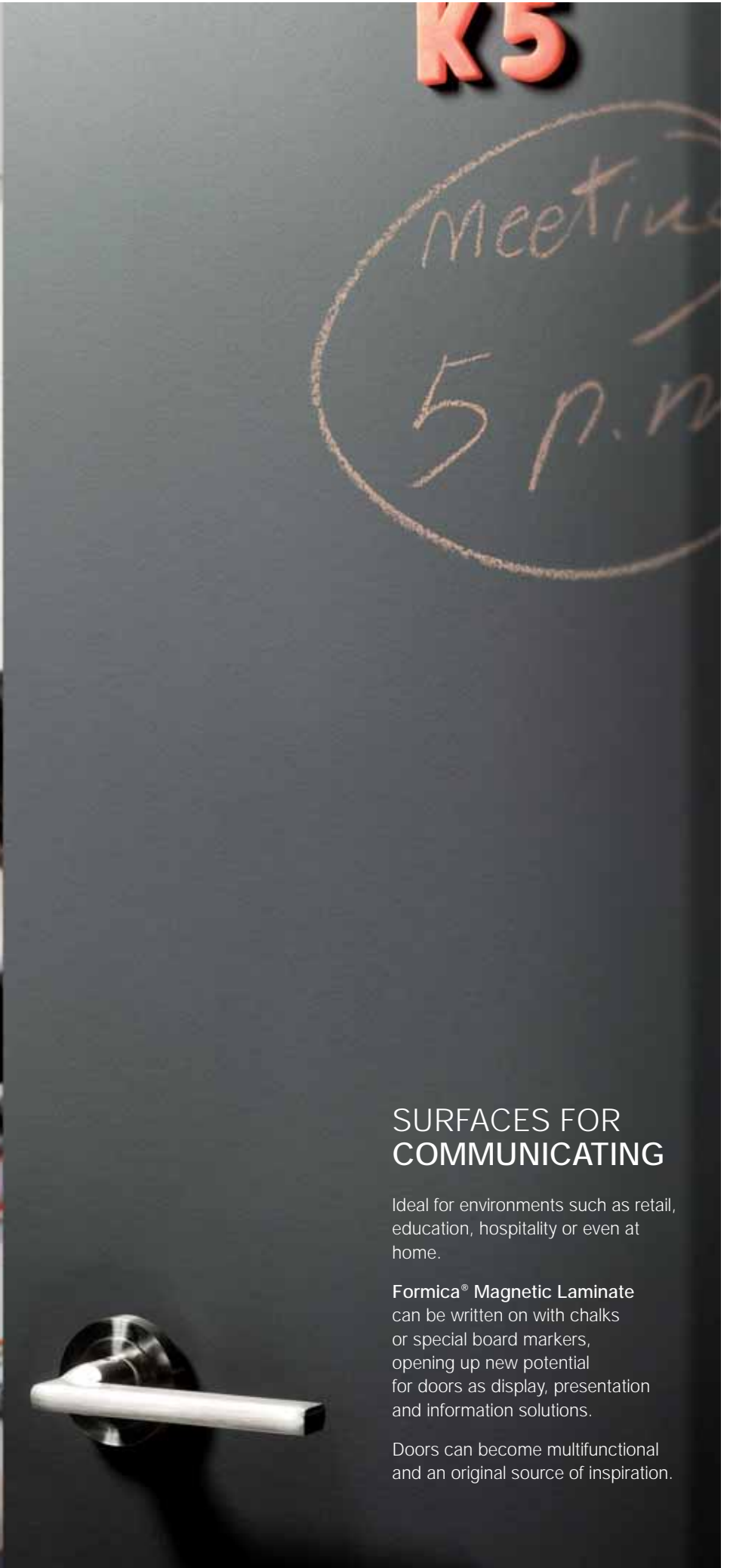
**Matte 58™** delivers a clean and modern look. **Matte 58™** is available on all Colors, Patterns and selected woodgrains.

*Refer to availability table on pages 18 - 19 for details and page 10 - 11 for samples.*



## INSPIRATION IS FINALLY YOURS

We take your image and encapsulate it into customised and personalised **Yunique®** by Formica Group High Pressure Laminate, to create exceptional and unique environments.



## SURFACES FOR COMMUNICATING

Ideal for environments such as retail, education, hospitality or even at home.

**Formica® Magnetic Laminate** can be written on with chalks or special board markers, opening up new potential for doors as display, presentation and information solutions.

Doors can become multifunctional and an original source of inspiration.







					
F0949 White MAT* <b>NEW</b>	F2696 Super White MAT	F2255 Polar White MAT*	F1093 Aries MAT	F7934 Pearl MAT	F2001 Baikal MAT
					
F3091 Crystal White MAT	F2274 Blanc Polaire MAT	F2010 Malibu MAT	F7927 Folkestone MAT*	F7923 Surf MAT*	F2791 Silver MAT
					
F7938 Glacier MAT	F1484 Steel MAT	F1994 Fox MAT	F7961 Fog MAT*	F7902 Iron MAT	F7858 Pumice MAT*
					
F0189 Sparta MAT	F7924 Lead MAT	F1535 Tornado MAT	F7928 Mouse MAT	F2770 Sarum Grey MAT	F3202 Otter MAT
					
F7912 Storm MAT*	F2297 Terril MAT	F7837 Graphite MAT	F2253 Diamond Black MAT*	F9266 Citadel MAT	F5342 Earth MAT*
					
F3210 Levante MAT*	F5348 Energy MAT*	F8858 Just Rose MAT <b>NEW</b>	F2582 Lilac MAT	F0231 Peaceful Blue MAT	F1194 Iris MAT
					
F2962 Clementine MAT	F1238 Carnaval MAT*	F0232 Juicy Pink MAT	F0233 Heather MAT	F1019 Azur MAT	F7880 Thistle MAT
					
F2824 Blaze Red MAT	F7845 Spectrum Red MAT	F6907 Amarena MAT*	F5346 Orchid MAT	F1997 Oceano MAT	F4168 Campanula MAT
					
F6902 Grenadine MAT	F0188 Beaujolais MAT	F5345 Viola MAT*	F2483 Ultramarine MAT	F7851 Spectrum Blue MAT*	F2828 Tropical Blue MAT
					
F2005 Paprika MAT	F7966 New Burgundy MAT*	F6903 Cassis MAT*	F5323 Nocturne MAT <b>NEW</b>	F7969 Navy Blue MAT	F7914 Marine Blue MAT

					
F7949 Soft White MAT	F1534 Magnolia MAT	F1192 Porcelana MAT	F1040 Alpino MAT	F7932 Antique White MAT*	F2273 Seringa MAT
					
F1531 Irish Cream MAT	F2774 New Magnolia MAT	F0547 Papyrus MAT	F2296 Sho White MAT	F0901 Gobi MAT	F2833 Sandstone MAT
					
F3050 Cygnet MAT	F7929 Oyster Grey MAT	F1532 Eldorado MAT	F7882 Pale Gold MAT	F7940 Spectrum Yellow MAT*	F1803 Tenere MAT
					
F8751 Mojave MAT	F0187 Kashmir MAT*	F0903 Cafe MAT	F1485 Chrome Yellow MAT	F3209 Sol MAT	F4156 Caramel MAT
					
F8757 Choco MAT	F2200 Dark Chocolate MAT*	F8823 Patina MAT <b>NEW</b>	F8857 Just Gold MAT* <b>NEW</b>	F4155 Sun MAT	F4161 Terracotta MAT
					
F8821 Just Blue MAT* <b>NEW</b>	F5493 Arctic Blue MAT	F5494 Aquamarine MAT	F2966 Opal MAT	F3236 Avocado MAT	F5344 Seed MAT*
					
F5127 Monaco MAT	F1998 Oslo MAT	F1850 Fontana MAT	F5349 Fossil MAT*	F8755 Lemon MAT*	F0800 Artichoke MAT <b>NEW</b>
					
F7884 China Blue MAT	F5347 Maui MAT*	F7879 Dusty Jade MAT	F7853 Ocean Grey MAT	F4177 Lime MAT*	F5341 Wasabi MAT
					
F8822 Denim MAT* <b>NEW</b>	F4172 Caribbean MAT	F1326 Capri MAT	F7897 Spectrum Green MAT	F6901 Vibrant Green MAT*	F3007 Pale Olive MAT
					
F0157 Tahiti MAT	F7846 Grotto MAT	F2478 Bermuda MAT	F7967 Hunter Green MAT	F8820 Leaf Green MAT <b>NEW</b>	F5343 Possum MAT

\*All Colors available in Matte 58 surface finish as standard. In addition 30 Colors are available in Linewood™ surface finish, at a premium. See availability table on pages 10 and 11 for details.



**F8841**  
White Ash NAT  
**NEW**



**F8841**  
White Ash MAT  
**NEW**



**F8839**  
Ashen Ribbonwood NAT  
**NEW**



**F8839**  
Ashen Ribbonwood MAT  
**NEW**



**F8006**  
Avignon Walnut NAT  
**NEW**



**F8006**  
Avignon Walnut MAT  
**NEW**



**F1079**  
Natural Oak LNW  
**NEW**



**F1079**  
Natural Oak NAT  
**NEW**



**F1079**  
Natural Oak MAT



**F8853**  
Rural Oak PGN  
**NEW**



**F5887**  
Millennium Oak PGN  
**NEW**



**F5372**  
Vintage Wood MAT



**F8966**  
Delano Oak PGN  
**NEW**



**F5483**  
Mocca Firwood LNW  
**NEW**



**F5483**  
Mocca Firwood MAT  
**NEW**



**F5883**  
Pecan Woodline NAT  
**NEW**



**F5883**  
Pecan Woodline MAT  
**NEW**



**F6052**  
Cottage Oak PGN  
**NEW**



**F6926**  
Smoky Walnut Woodline NAT



**F6926**  
Smoky Walnut Woodline MAT  
**NEW**



**F5373**  
Nocturne Wood MAT



**F5477**  
Ebony Oak Cross MAT



**F8967**  
Logan Oak PGN  
**NEW**



**F8851**  
Classic Wenge LNW  
**NEW**



**F5488**  
Smoky Brown Pear LNW  
**NEW**



**F5488**  
Smoky Brown Pear NAT



**F5488**  
Smoky Brown Pear MAT



**F9012**  
Ebony LNW  
**NEW**



**F9012**  
Ebony NAT



**F9012**  
Ebony MAT



**F5884**  
Chestnut Woodline NAT  
**NEW**



**F5884**  
Chestnut Woodline MAT  
**NEW**



**F0873**  
Ebony Ribbonwood NAT  
**NEW**



**F0873**  
Ebony Ribbonwood MAT  
**NEW**



**F8848**  
Blackened Legno NAT  
**NEW**



**F8848**  
Blackened Legno MAT  
**NEW**



**F7555**  
Manitoba Maple MAT



**F8843**  
Natural Ash NAT  
**NEW**



**F8843**  
Natural Ash MAT  
**NEW**



**F3855**  
Clear Maple MAT



**F7921**  
Birch MAT



**F7603**  
Bio-Oak MAT



**F1143**  
French Sycamore MAT



**F2726**  
Natural Beech MAT



**F1297**  
American Maple MAT



**F1062**  
Smoked Oak LNW  
**NEW**



**F1062**  
Smoked Oak NAT



**F5370**  
Ivory Oak Cross MAT



**F6930**  
Natural Cane NAT



**F6930**  
Natural Cane MAT  
**NEW**



**F5374**  
Elegant Oak LNW  
**NEW**



**F5374**  
Elegant Oak NAT



**F5374**  
Elegant Oak MAT  
**NEW**



**F5486**  
Classic Walnut MAT



**F0190**  
Finn Beech MAT



**F2884**  
Vosges Pear MAT



**F6149**  
Light Oak MAT



**F3699**  
Rattan Cane NAT



**F3699**  
Rattan Cane MAT  
**NEW**



**F1139**  
Country Cherry MAT

# Formica® Laminate

THE ORIGINAL HIGH PRESSURE LAMINATE by FORMICA GROUP

## Woods



**F5487** MAT  
Oiled Walnut



**F6932** NAT  
Macchiato Walnut



**F6932** MAT **NEW**  
Macchiato Walnut



**F1293** MAT  
Redwood



**F6209** MAT  
Prestige Walnut



**F1614** MAT  
Punga Punga Wood



**F5489** LNW **NEW**  
Espresso Pear



**F5489** NAT  
Espresso Pear



**F5489** MAT **NEW**  
Espresso Pear

# Formica® Laminate

THE ORIGINAL HIGH PRESSURE LAMINATE by FORMICA GROUP

## Patterns



**F0193** MAT  
Xenon



**F3735** MAT  
Krypton



**F3734** MAT  
Radon



**F8837** MAT **NEW**  
Brushed Zinc



**F8975** MAT **NEW**  
Patina Brush



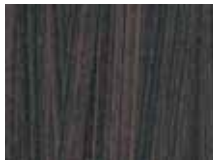
**F8859** MAT **NEW**  
Vintage Brush



**F6305** MAT **NEW**  
Limed Strand



**F6307** MAT **NEW**  
Burnt Strand



**F6306** MAT **NEW**  
Wenge Strand



**F0202** MAT  
Light Gauze



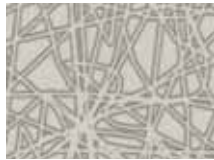
**F7708** MAT  
Flax Gauze



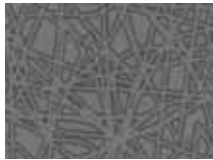
**F5583** MAT  
Steel Metal



**F5270** MAT **NEW**  
Geo White



**F5272** MAT **NEW**  
Geo Folkestone



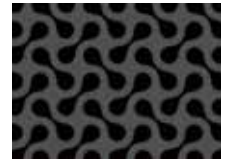
**F5273** MAT **NEW**  
Geo Citadel



**F5281** MAT **NEW**  
Dogbone White



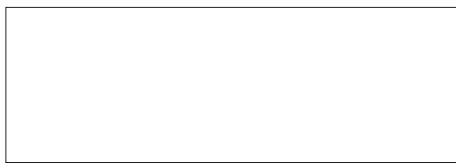
**F5280** MAT **NEW**  
Dogbone Grey



**F5283** MAT **NEW**  
Dogbone Storm

# Formica® Magnetic Laminate

SURFACES FOR COMMUNICATING by FORMICA GROUP



**M3091** MNL  
Crystal White



**M2253** MNL  
Diamond Black

A non-decorative magnetic board M4702, (unspecified finish), is also available, that can be used to add magnetic properties to almost any thin, decorative laminate from the Formica Door Collection.

# LINWOOD™

SURFACE FINISH by FORMICA GROUP



**F0949** LNW **NEW**  
White

30 Colors are available in Linewood™ surface finish, at a premium. See availability table for details.

# Younique®

DESIGN A LAMINATE by FORMICA GROUP



MAT



F8841 White Ash **NEW**



F8839 Ashen Ribbonwood **NEW**



F8006 Avignon Walnut **NEW**



F8966 Delano Oak **NEW**



F1079 Natural Oak



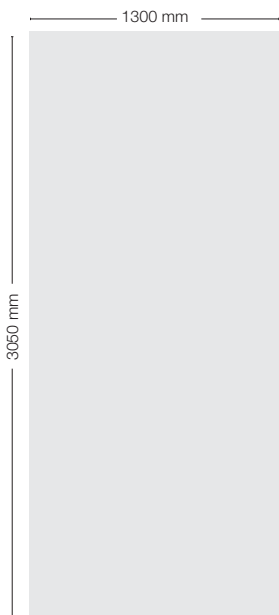
F7603 Bio-Oak



F1062 Smoked Oak



F8853 Rural Oak **NEW**



F6926 Smoky Walnut Woodline



F5372 Vintage Wood



F5483 Mocca Firwood **NEW**

Woodgrain layouts shown on this page are provided for guidance only.  
To see the colour and sample in 1:1 scale please refer to the actual product samples on pages 12 and 13.  
Full sheet sizes are represented in 3050 x 1300 mm.



F7555 Manitoba Maple



F8843 Natural Ash **NEW**



F6930 Natural Cane



F8967 Logan Oak **NEW**



F6932 Macchiato Walnut



F5487 Oiled Walnut



F9012 Ebony



F5489 Espresso Pear



F5488 Smoky Brown Pear



F5373 Nocturne Wood



F5477 Ebony Oak Cross



F0873 Ebony Ribbonwood **NEW**

Woodgrain layouts shown on this page are provided for guidance only.  
To see the colour and sample in 1:1 scale please refer to the actual product samples on pages 12 and 13.  
Full sheet sizes are represented in 3050 x 1300 mm.



F1143 French Sycamore



F2726 Natural Beech



F3855 Clear Maple



F5370 Ivory Oak Cross



F7921 Birch



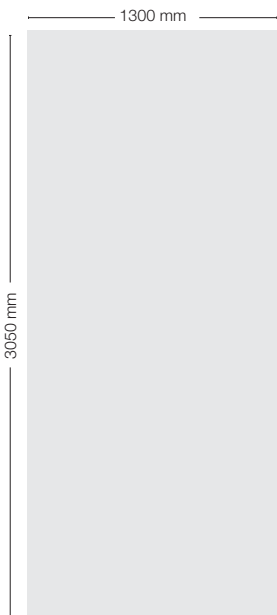
F1297 American Maple



F0190 Finn Beech



F5374 Elegant Oak



F5486 Classic Walnut



F5883 Pecan Woodline **NEW**



F5887 Millennium Oak **NEW**





F6149 Light Oak



F3699 Rattan Cane



F2884 Vosges Pear



F1139 Country Cherry



F1293 Redwood



F6052 Cottage Oak **NEW**



F5884 Chestnut Woodline **NEW**



F8851 Classic Wenge **NEW**



F8848 Blackened Legno **NEW**



F6209 Prestige Walnut



F1614 Punga Punga Wood

Woodgrain layouts shown on this page are provided for guidance only.  
To see the colour and sample in 1:1 scale please refer to the actual product samples on pages 12 and 13.  
Full sheet sizes are represented in 3050 x 1300 mm.

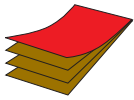
# FORMICA® Door Collection

Code	Name	Range	NCS*	RAL*	Light reflectance value	Sheet size (mm)	
						2150 x 950 / 2350 x 950 / 2350 x 1300	3050 x 1300
						Grade HGS	Grade HGP
F0157	Tahiti	Colors	S 4550-R90B	5010	11.4	MAT	MAT
F0187	Kashmir	Colors	S 5010-Y30R		25.6	LNW / MAT	LNW / MAT
F0188	Beaujolais	Colors	S 3060-R	3003	12.0	MAT	MAT
F0189	Sparta	Colors	S 3502-B	7040	39.1	MAT	MAT
F0190	Finn Beech	Woods			40.8	MAT	MAT
F0193	Xenon	Patterns			47.2	MAT	MAT
F0202	Light Gauze	Patterns			64.6	MAT	MAT
F0231	Peaceful Blue	Colors	S 1030-R80B		55.7	MAT	MAT
F0232	Juicy Pink	Colors	S 1060-R20B	4003	23.7	MAT	MAT
F0233	Heather	Colors	S 2030-R50B		44.8	MAT	MAT
F0547	Papyrus	Colors	S 1010-Y20R	1015	77.5	MAT	MAT
F0800	Artichoke	Colors	S 2020-G80Y	1000	48.6	MAT	MAT
F0873	Ebony Ribbonwood	Woods			9.1	MAT / NAT	MAT / NAT
F0901	Gobi	Colors	S 1010-Y30R		72.1	MAT	MAT
F0903	Cafe	Colors	S 3020-Y20R		39.0	MAT	MAT
F0949	White	Colors	S 0502-R50B		81.5	LNW / MAT	LNW / MAT
F1019	Azur	Colors	S 2040-R80B		36.7	MAT	MAT
F1040	Alpino	Colors	S 0502-G50Y	9010	86.9	MAT	MAT
F1062	Smoked Oak	Woods			31.7	LNW / NAT	LNW / NAT
F1079	Natural Oak	Woods			49.0	LNW / NAT	LNW / NAT
F1093	Aries	Colors	S 1500-N		66.2	MAT	MAT
F1139	Country Cherry	Woods			21.0	MAT	MAT
F1143	French Sycamore	Woods			58.6	MAT	MAT
F1192	Porcelana	Colors	S 0505-Y20R	1013	81.4	MAT	MAT
F1194	Iris	Colors	S 1020-R90B		63.3	MAT	MAT
F1238	Carnaval	Colors	S 1580-Y90R	3001	15.7	LNW / MAT	LNW / MAT
F1293	Redwood	Woods			12.7	MAT	MAT
F1297	American Maple	Woods			39.3	MAT	MAT
F1326	Capri	Colors	S 3030-B70G		31.2	MAT	MAT
F1484	Steel	Colors	S 3005-R80B	7040	42.6	MAT	MAT
F1485	Chrome Yellow	Colors	S 1060-Y	1018	65.6	MAT	MAT
F1531	Irish Cream	Colors	S 1005-Y50R		74.2	MAT	MAT
F1532	Eldorado	Colors	S 1020-Y20R	1014	61.2	MAT	MAT
F1534	Magnolia	Colors	S 0502-Y50R		78.3	MAT	MAT
F1535	Tornado	Colors	S 4500-N	7036	32.3	MAT	MAT
F1614	Punga Punga Wood	Woods			8.0	MAT	MAT
F1803	Tenere	Colors	S 1040-Y10R		63.0	MAT	MAT
F1850	Fontana	Colors	S 2010-B90G		57.0	MAT	MAT
F1994	Fox	Colors	S 3500-N	7004	42.4	MAT	MAT
F1997	Oceano	Colors	S 3050-R80B		17.9	MAT	MAT
F1998	Oslo	Colors	S 3020-B		33.9	MAT	MAT
F2001	Baikal	Colors	S 1502-Y	9002	67.6	MAT	MAT
F2005	Paprika	Colors	S 4050-Y80R		12.7	MAT	MAT
F2010	Malibu	Colors	S 1000-N		77.7	MAT	MAT
F2200	Dark Chocolate	Colors	S 8005-Y80R	8017	9.0	LNW / MAT	LNW / MAT
F2253	Diamond Black	Colors	S 9000-N	9011	6.7	LNW / MAT	LNW / MAT
M2253	Diamond Black	Formica® Magnetic	S 9000-N	9011	6.7		MNL* (2440 x 1220 / 3050 x 1220)
F2255	Polar White	Colors	S 0500-N	9016	85.7	LNW / MAT	LNW / MAT
F2273	Seringa	Colors	S 1010-Y30R	1015	70.7	MAT	MAT
F2274	Blanc Polaire	Colors	S 0502-B	9003	82.8	MAT	MAT
F2296	Sno White	Colors	S 0502-Y	9010	85.8	MAT	MAT
F2297	Terril	Colors	S 7502-B	7016	9.6	MAT	MAT
F2478	Bermuda	Colors	S 3050-B30G	5021	20.2	MAT	MAT
F2483	Ultramarine	Colors	S 4550-R70B	5022	9.3	MAT	MAT
F2582	Lilac	Colors	S 1020-R70B		59.7	MAT	MAT
F2696	Super White	Colors	S 0505-R70B		81.2	MAT	MAT
F2726	Natural Beech	Woods			55.0	MAT	MAT
F2770	Sarum Grey	Colors	S 4502-Y		30.5	MAT	MAT
F2774	New Magnolia	Colors	S 1005-Y30R	1013	73.1	MAT	MAT
F2791	Silver	Colors	S 1002-Y	9002	68.9	MAT	MAT
F2824	Blaze Red	Colors	S 1080-Y80R	2002	20.4	MAT	MAT
F2828	Tropical Blue	Colors	S 3060-R90B		18.3	MAT	MAT
F2833	Sandstone	Colors	S 2010-Y30R		57.8	MAT	MAT
F2884	Vosges Pear	Woods			25.2	MAT	MAT
F2962	Clementine	Colors	S 1080-Y70R	2009	26.2	MAT	MAT
F2966	Opal	Colors	S 1010-G10Y		66.6	MAT	MAT
F3007	Pale Olive	Colors	S 3020-G60Y		39.5	MAT	MAT
F3050	Cygnat	Colors	S 2005-Y40R		59.3	MAT	MAT
F3091	Crystal White	Colors	S 0300-N	9016	88.8	MAT	MAT
M3091	Crystal White	Formica® Magnetic	S 0300-N	9016	88.8		MNL* (2440 x 1220 / 3050 x 1220)
F3202	Otter	Colors	S 4005-Y20R		34.4	MAT	MAT
F3209	Sol	Colors	S 0560-Y20R	1017	56.1	MAT	MAT
F3210	Levante	Colors	S 1070-Y40R	2011	37.1	LNW / MAT	LNW / MAT
F3236	Avocado	Colors	S 0530-G50Y		73.8	MAT	MAT
F3699	Rattan Cane	Woods			23.7	MAT / NAT	MAT / NAT
F3734	Radon	Patterns			18.7	MAT	MAT
F3735	Krypton	Patterns			35.3	MAT	MAT
F3855	Clear Maple	Woods			52.2	MAT	MAT
F4155	Sun	Colors	S 0580-Y30R	1028	49.7	MAT	MAT
F4156	Caramel	Colors	S 2040-Y30R		45.4	MAT	MAT
F4161	Terracotta	Colors	S 3040-Y60R		27.9	MAT	MAT
F4168	Campanula	Colors	S 1550-R80B		29.4	MAT	MAT
F4172	Caribbean	Colors	S 2050-B20G		35.2	MAT	MAT
F4177	Lime	Colors	S 1040-G50Y		56.6	LNW / MAT	LNW / MAT
M4702	Magn. Board Sanded Both Sides	Formica® Magnetic					UNS* (2440 x 1220 / 3050 x 1220)
F5127	Monaco	Colors	S 1050-R90B		36.8	MAT	MAT
F5270	Geo White	Patterns			69.1	MAT	MAT
F5272	Geo Folkestone	Patterns			43.9	MAT	MAT
F5273	Geo Citadel	Patterns			16.4	MAT	MAT
F5280	Dogbone Grey	Patterns			69.7	MAT	MAT
F5281	Dogbone White	Patterns			71.5	MAT	MAT
F5283	Dogbone Storm	Patterns			11.0	MAT	MAT
F5323	Nocturne	Colors	S 8010-R70B	5004	6.5	MAT	MAT

\* M3091 Crystal White, M2253 Diamond Black and M4702 Magnetic Board Sanded Both Sides are only available in sizes 2440 x 1220 and 3050 x 1220 mm in grade MLB.

Code	Name	Range	NCS®	RAL®	Light reflectance value	Sheet size (mm)	
						2150 x 950 / 2350 x 950 / 2350 x 1300	3050 x 1300
						Grade HGS	Grade HGP
F5341	Wasabi	Colors	S 2040-G80Y		49.8	MAT	MAT
F5342	Earth	Colors	S 6005-Y20R	7006	20.0	LNW / MAT	LNW / MAT
F5343	Possum	Colors	S 5005-G80Y		27.3	MAT	MAT
F5344	Seed	Colors	S 3005-G80Y	7032	46.7	LNW / MAT	LNW / MAT
F5345	Viola	Colors	S 5040-R30B		9.6	LNW / MAT	LNW / MAT
F5346	Orchid	Colors	S 3040-R40B		24.1	MAT	MAT
F5347	Maui	Colors	S 2030-B30G		42.1	LNW / MAT	LNW / MAT
F5348	Energy	Colors	S 1070-Y90R		23.9	LNW / MAT	LNW / MAT
F5349	Fossil	Colors	S 3005-B80G		42.9	LNW / MAT	LNW / MAT
F5370	Ivory Oak Cross	Woods			43.8	MAT	MAT
F5372	Vintage Wood	Woods			25.2	MAT	MAT
F5373	Nocturne Wood	Woods			14.7	MAT	MAT
F5374	Elegant Oak	Woods			35.0	LNW / MAT / NAT	LNW / MAT / NAT
F5477	Ebony Oak Cross	Woods			11.4	MAT	MAT
F5483	Mocca Firwood	Woods			32.0	LNW	LNW
F5486	Classic Walnut	Woods			30.5	MAT	MAT
F5487	Oiled Walnut	Woods			18.6	MAT	MAT
F5488	Smoky Brown Pear	Woods			14.8	LNW / MAT / NAT	LNW / MAT / NAT
F5489	Espresso Pear	Woods			9.8	LNW / MAT / NAT	LNW / MAT / NAT
F5493	Arctic Blue	Colors	S 0510-R90B		71.8	MAT	MAT
F5494	Aquamarine	Colors	S 0510-B90G		77.1	MAT	MAT
F5583	Steel Metal	Patterns			22.9	MAT	MAT
F5883	Pecan Woodline	Woods			27.4	MAT / NAT	MAT / NAT
F5884	Chestnut Woodline	Woods			13.9	MAT / NAT	MAT / NAT
F5887	Millennium Oak	Woods			26.7	PGN	PGN
F6052	Cottage Oak	Woods			17.9	PGN	PGN
F6149	Light Oak	Woods			29.0	MAT	MAT
F6209	Prestige Walnut	Woods			8.8	MAT	MAT
F6305	Limed Strand	Patterns			66.7	MAT	MAT
F6306	Wenge Strand	Patterns			11.0	MAT	MAT
F6307	Burnt Strand	Patterns			15.1	MAT	MAT
F6901	Vibrant Green	Colors	S 2060-G30Y	6018	32.1	LNW / MAT	LNW / MAT
F6902	Grenadine	Colors	S 3060-Y80R	3016	16.2	MAT	MAT
F6903	Cassis	Colors	S 6030-R50B		9.8	LNW / MAT	LNW / MAT
F6907	Amarena	Colors	S 3050-R30B	4006	14.3	LNW / MAT	LNW / MAT
F6926	Smoky Walnut Woodline	Woods			22.3	MAT / NAT	MAT / NAT
F6930	Natural Cane	Woods			49.1	MAT / NAT	MAT / NAT
F6932	Macchiato Walnut	Woods			15.8	MAT / NAT	MAT / NAT
F7555	Manitoba Maple	Woods			62.0	MAT	MAT
F7603	Bio-Oak	Woods			43.0	MAT	MAT
F7708	Flax Gauze	Patterns			51.5	MAT	MAT
F7837	Graphite	Colors	S 8000-N	8019	10.8	MAT	MAT
F7845	Spectrum Red	Colors	S 2070-R	3001	15.9	MAT	MAT
F7846	Grotto	Colors	S 5030-B10G		18.3	MAT	MAT
F7851	Spectrum Blue	Colors	S 3060-R80B		13.4	LNW / MAT	LNW / MAT
F7853	Ocean Grey	Colors	S 3010-G20Y		37.0	MAT	MAT
F7858	Pumice	Colors	S 2005-Y20R		60.0	LNW / MAT	LNW / MAT
F7879	Dusty Jade	Colors	S 3020-B50G		42.5	MAT	MAT
F7880	Thistle	Colors	S 3010-R80B		39.5	MAT	MAT
F7882	Pale Gold	Colors	S 1020-Y		71.2	MAT	MAT
F7884	China Blue	Colors	S 3020-R90B		34.7	MAT	MAT
F7897	Spectrum Green	Colors	S 3050-G	6024	20.3	MAT	MAT
F7902	Iron	Colors	S 3502-Y		43.9	MAT	MAT
F7912	Storm	Colors	S 6502-B	7015	14.8	LNW / MAT	LNW / MAT
F7914	Marine Blue	Colors	S 6030-R80B	5003	9.2	MAT	MAT
F7921	Birch	Woods			52.2	MAT	MAT
F7923	Surf	Colors	S 1502-Y	9002	69.4	LNW / MAT	LNW / MAT
F7924	Lead	Colors	S 5010-R90B		25.4	MAT	MAT
F7927	Folkestone	Colors	S 2500-N		53.5	LNW / MAT	LNW / MAT
F7928	Mouse	Colors	S 5000-N	7037	25.0	MAT	MAT
F7929	Oyster Grey	Colors	S 2005-Y50R		48.1	MAT	MAT
F7932	Antique White	Colors	S 0804-Y30R		81.6	LNW / MAT	LNW / MAT
F7934	Pearl	Colors	S 1002-Y	9002	73.7	MAT	MAT
F7938	Glacier	Colors	S 1502-B		63.9	MAT	MAT
F7940	Spectrum Yellow	Colors	S 1070-Y10R	1023	54.5	LNW / MAT	LNW / MAT
F7949	Soft White	Colors	S 0500-N	9016	86.2	MAT	MAT
F7961	Fog	Colors	S 4000-N	7004, 7036	37.0	LNW / MAT	LNW / MAT
F7966	New Burgundy	Colors	S 5040-R	3004	9.8	LNW / MAT	LNW / MAT
F7967	Hunter Green	Colors	S 7020-G	6005	10.6	MAT	MAT
F7969	Navy Blue	Colors	S 7020-R80B	5013	8.3	MAT	MAT
F8006	Avignon Walnut	Woods			35.4	MAT / NAT	MAT / NAT
F8751	Mojave	Colors	S 3010-Y30R		40.9	MAT	MAT
F8755	Lemon	Colors	S 1060-G60Y		56.3	LNW / MAT	LNW / MAT
F8757	Chocco	Colors	S 6010-Y50R		16.7	MAT	MAT
F8820	Leaf Green	Colors	S 3040-G50Y		33.6	MAT	MAT
F8821	Just Blue	Colors	S2020-R90B		45.2	LNW / MAT	LNW / MAT
F8822	Denim	Colors	S 5030-R90B		16.1	LNW / MAT	LNW / MAT
F8823	Patina	Colors	S 6020-Y30R	8007, 8025	14.0	MAT	MAT
F8837	Brushed Zinc	Patterns			37.0	MAT	MAT
F8839	Ashen Ribbonwood	Woods			43.0	MAT / NAT	MAT / NAT
F8841	White Ash	Woods			69.7	MAT / NAT	MAT / NAT
F8843	Natural Ash	Woods			53.3	MAT / NAT	MAT / NAT
F8848	Blackened Legno	Woods			8.0	MAT / NAT	MAT / NAT
F8851	Classic Wenge	Woods			9.4	LNW	LNW
F8853	Rural Oak	Woods			32.9	PGN	PGN
F8857	Just Gold	Colors	S 2040-Y	1012	48.5	LNW / MAT	LNW / MAT
F8858	Just Rose	Colors	S 1010-R10B		65.7	MAT	MAT
F8859	Vintage Brush	Patterns			25.0	MAT	MAT
F8966	Delano Oak	Woods			31.5	PGN	PGN
F8967	Logan Oak	Woods			14.5	PGN	PGN
F8975	Patina Brush	Patterns			21.0	MAT	MAT
F9012	Ebony	Woods			9.1	LNW / NAT	LNW / NAT
F9266	Citadel	Colors	S 6502-Y		18.6	MAT	MAT

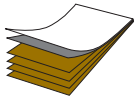
All Younique® laminates are only available in sizes 2440 x 1220 and 3050 x 1300 mm in MAT surface finish.



## Formica® Laminate

THE ORIGINAL HIGH PRESSURE LAMINATE by FORMICA GROUP

Formica® High Pressure Laminate (HPL) is manufactured through fusing multiple layers of impregnated paper under high pressure and temperature to create a hard wearing, durable and hygienic surfacing material. The Formica® Colors, Patterns and Woods ranges are high pressure laminates which are available in horizontal, general purpose, standard grade, (HGS), and horizontal, general purpose, postforming grade, (HGP) as standard. Flame retardant HPL (VFP grade) is also available on request.



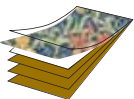
## Formica® Magnetic Laminate

SURFACES FOR COMMUNICATING by FORMICA GROUP

Formica® Magnetic Laminate is a decorative laminate with all the benefits and assured quality of traditional Formica® laminate but with added advantages ideal for communication and display. Formica Magnetic Laminate helps to create practical, fun and functional spaces at home, at school or in the workplace. Carefully selected colours and a mix of surface finishes combine to offer a wide variety of applications and uses in environments such as retail, education, commercial and residential.

All achieve a very high magnetic effect and can be written on with chalks or special board markers, making them ideal for use as display, presentation and information boards. They can also provide the perfect backdrop for visual display projection.

A non-decorative magnetic board M4702 (unspecified finish) is also available, that can be used to add magnetic properties to almost any thin decorative laminate from the Formica® Door Collection.



## Younique®

DESIGN A LAMINATE by FORMICA GROUP

Younique® by Formica Group is a High Pressure Laminate with a customised, printed image as its decorative face. The printed image in Younique laminates is incorporated in the laminate structure and not just printed on the surface; this affords a much greater resistance to damage and ease of maintenance. Younique laminates can be either single sided, thin High Pressure Laminate, or Compact in single sided or double sided format in varying thicknesses.

All Younique projects are priced on volume and complexity. For further information on sizes, pricing quotes, lead-time, file transfer options, etc. go to [www.formica.com](http://www.formica.com) or contact your local Formica Group sales office or representative.

### Performance Features



Chemical resistant



Impact resistant



Water resistant



Hygienic



Flat bonding



Postform Grade HGP



Stain resistant



Scratch resistant

The performance features icons are for general reference only. For more specific product information, including technical data and warranties please refer to [www.formica.com](http://www.formica.com) (Knowledge).

### Surface Finish & Grade Matrix

Surface Finish Description	Surface Finish Designation	Surface Finish Code	Grade	Grade Code
Linewood™ <b>NEW</b>	LNW	LW	HGP / HGS	02 / 01
Magnetic Matt	MNL	MN	MLB	M5
Matte 58™	MAT	58	HGP / HGS	02 / 01
Naturelle™	NAT	NT	HGP / HGS	02 / 01
Puregrain™ <b>NEW</b>	PGN	35	HGP / HGS	02 / 01
Unspecified Finish	UNS	99	MLB	M5

Grade	Grade Description	Nominal thickness (mm)
HGP	Horizontal, General purpose, Postforming	0.7
HGS	Horizontal, General purpose, Standard	0.7
MLB	Magnetic Laminate Standard	1.0

### K to F Code Conversion

Previous K Code	Name	New F Code
K1019	Azur	F1019
K1031	Papyrus	F0547
K1040	Alpino	F1040
K1093	Aries	F1093
K1097	Citadel	F9266
K1181	Irish Cream	F1531
K1192	Porcelana	F1192
K1194	Iris	F1194
K1238	Carnaval	F1238
K1301	Gobi	F0901
K1326	Capri	F1326
K1394	Tahiti	F0157
K1834	Kashmir	F0187
K1850	Fontana	F1850
K1871	Monaco	F5127
K1902	Eldorado	F1532
K1903	Cafe	F0903
K1962	Magnolia	F1534
K1994	Fox	F1994
K1997	Oceano	F1997
K1998	Oslo	F1998
K2001	Baikal	F2001
K2005	Paprika	F2005
K2010	Malibu	F2010
K2020	Tornado	F1535
K2022	Tenere	F1803
K2046	Beaujolais	F0188
K2081	Sparta	F0189
K3202	Otter	F3202
K3209	Sol	F3209
K3210	Levante	F3210
K3236	Avocado	F3236
K3734	Radon	F3734
K3735	Krypton	F3735
K3737	Xenon	F0193
K5583	Steel Metal	F5583
K6149	Light Oak	F6149
K7016	Finn Beech	F0190
K7024	Birch	F7921
K7555	Manitoba Maple	F7555
K7603	Bio-Oak	F7603



© Property of and used on licence from the Scandinavian Color Institute AB, Sölvesborg, Stockholm 2015.

Formica Group are FSC® certified and comply with the requirements of FSC. Network of participating European Formica Group sites is shown on certificate number TTCCO-003588. All trademarks and copyrights are owned by The Diller Corporation.



**Austria**

Tel: +49 (0) 180 367 64 22  
austria@formica.com

**Belgium**

Tel: +32 2 705 18 18  
contact.belgie@formica.com

**Denmark**

Tel: +45 43 58 82 00  
info.danmark@formica.com

**Finland**

Tel: +358 3 5800 200  
info.finland@formica.com

**France**

Tel: +33 (0) 3 87 29 10 13  
service.echantillons@formica.com

**Germany**

Tel: +49 (0) 180 367 64 22  
kontakt.deutschland@formica.com

**Holland**

Tel: +31 (0) 70 413 48 20  
contact.nederland@formica.com

**Ireland**

Tel: +353 1 872 4322  
samples.uk@formica.com

**Italy**

Tel: +39 068 7502115  
italia@formica.com

**Middle East**

Tel: +971 4 329 82 80  
middle.east@formica.com

**Morocco**

Tel: +212 (0) 522472047  
administration.maroc@formica.com

**Norway**

Tel: +47 800 13 016  
info.norge@formica.com

**Poland**

Tel: +48 22 516 20 84/85  
info.polska@formica.com

**Russia**

Tel: +7 495 646 07 25  
Samples tel: +8 800 333 11 63  
russia@formica.com

**Spain**

Tel: + 34 96 122 07 01 (opción 2)  
contact.es@formica.com  
muestras@formica.com

**Sweden**

Tel: +46 42 38 48 00  
info.sverige@formica.com

**Switzerland**

Tel: +41 44 818 88 18  
schweiz@formica.com

**United Kingdom**

Tel: +44 191 259 3100  
Samples tel: +44 191 259 3512  
samples.uk@formica.com

**formica.com**

