



Dramatic / Functional / Desirable / Affordable

TRUESCALE

by FORMICA GROUP



Experience the
TrueScale
of nature



F3425 Silver Nacardo



F9480 Salvaged Planked Elm

Bringing laminate to life

To create TrueScale laminates, our design team worked closely with experts to identify and select objects of nature that would support our concept of vastly increased pattern repeat in our laminates, and offer decors identical to nature in aspects such as grain, colour and scale.

Once the granite, stone and wood samples had been selected we took our idea to the professionals – architects and designers – carrying out extensive research to validate and confirm the position and attractiveness of TrueScale laminate in the market.

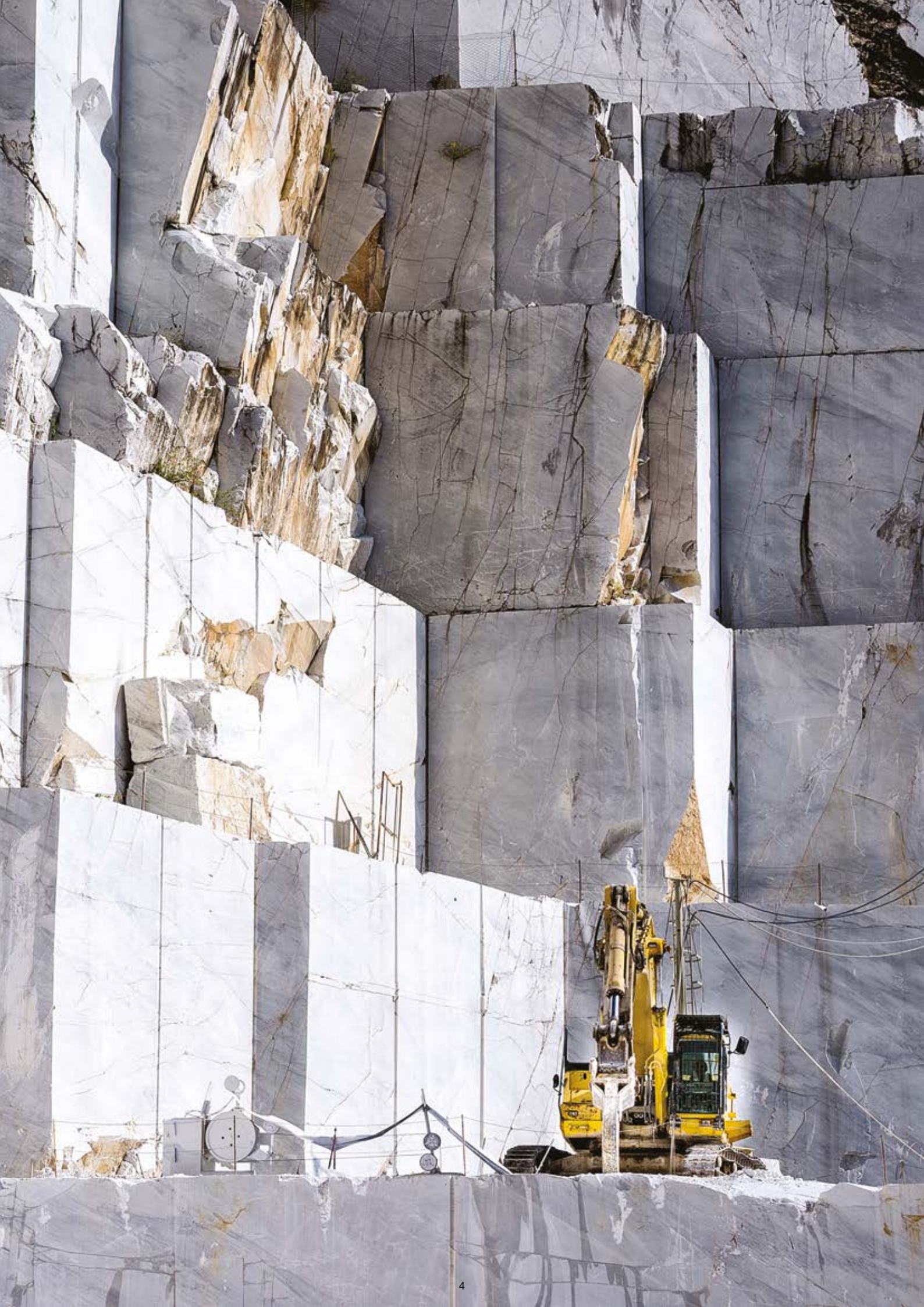
Sophisticated digital scanning and printing technology has allowed us to meticulously replicate every intricacy of detail from our full scale real material samples to create a laminate which is almost indistinguishable from the natural source, yet provides enhanced practical benefits such as durability and consistency.

From inspiration to production, TrueScale laminates construct natural drama in every sheet by capturing the unique, exotic aesthetic of natural materials.

Exquisite natural detail on an architectural scale, at a fraction of the cost of the real thing.

In TrueScale we have cultivated the instinctual human attraction to nature and created biophilic designs that inspire healthier, happier and more productive environments.





Why choose TrueScale by Formica Group?

A premium look that's cost effective

With TrueScale laminates you can design luxurious spaces and create the same dramatic effects offered by natural materials, at a fraction of the associated cost.

A robust and enduring product

TrueScale laminates capture the delicate beauty of nature and are manufactured to withstand high traffic use in any commercial project.

Easy to work with

Create impressive sweeping curves or monolithic slabs of marble with TrueScale laminates. It's a product that is light, flexible, formable, non-porous and abrasion resistant and requires no pre or post installation treatments to maintain its stunning looks.

Features and benefits

- High definition, true scale prints
- Lightweight
- Low maintenance
- Easy to clean
- Hygienic
- Non porous
- Wear resistant
- Impact resistant
- Formable to hold a curve
- Cost effective
- Fire retardant grades available
- Compact grades available



**Repeating section 1300-1400mm dependent on decor*

Design possibilities on a grand scale

TrueScale laminates utilise the latest high definition printing techniques to create large, true to life prints.

Capturing the majesty and drama of luxurious stones and rich Wood grains, there is no print repeat across the width of the sheet, allowing marble veining and unique wood planking to flow uninterrupted.

Without the repetition of standard laminates, TrueScale designs are so realistic, mirroring the exact characteristics of natural materials and presenting design possibilities on a grand scale.

Powerful designs direct from nature

TrueScale by Formica Group captures the visual drama of the natural world, presenting the next generation of stone and wood laminates.

Striking true to scale patterns, incredible detail and vibrant colours, combined with the practical attributes of high pressure laminate, this is a surfacing material that demands attention.





Challenge your expectations

Formica Group has long been at the forefront of innovation in laminate production and TrueScale embodies our commitment to providing exceptional, cost-effective laminates to architects, specifiers and fabricators.

Texture provides an extra dimension to any surface and presents an important tactile experience for those who interact with it.

To enhance the authenticity of TrueScale laminates, we have partnered specific premium surface finishes, ranging from brushed to highly polished stones and deep wood structures, with each True Scale design.

It's time to take a fresh look at laminate





A multi-use laminate with extensive capabilities

On many projects cladding large areas with heavy and expensive granites and marble would not be practical or feasible. TrueScale laminate is suitable for use in a wide range of commercial applications across the hospitality, leisure and retail sectors. It's the perfect blend of desirable aesthetics and superior functionality.







Designed by nature,
expertly crafted by
Formica Group



Exceptional
interiors for
everyday places

Sleek and stylish hospitality

High-end hospitality requires finishes that inspire and surfaces that endure. TrueScale by Formica Group delivers both. From hardy table tops to stunning wall panel backdrops, use TrueScale laminate to craft bespoke interiors that will offer a luxurious finish to hotels, restaurants, clubs and bars.

F3425 Silver Nacardo



F6362 Concrete Formwood



Interiors that pack a punch

Use TrueScale laminate in interior spaces to create contemporary, bold designs that are uplifting and inviting. From grand reception areas to minimalist sports environments and modern eating spaces. Formica Group's TrueScale laminate combines intense visuals with easy-cleaning, low maintenance design.

F6410 Weathered Beamwood



F3460 Calacatta Marble



F3459 Soapstone Sequoia



F6410 Weathered Beamwood

Forever fashionable retail spaces

Using TrueScale laminate in retail environments can create a unique customer experience without the expense and the difficulties associated with marble, granite and real wood, such as extra reinforcements for weight and high risk of damage. Deliver stunning product backdrops which stretch from entrance to storeroom with ease.

Typical retail applications include cash desks, point of sale, wall paneling, retail shelving, plinths, column casings and changing rooms.



F3459 Soapstone Sequoia



F9482 Marbled Cappuccino



Full Range

Take a closer look



Calacatta Marble
F3460

AR Plus® Gloss

Full sheet decor scan (3050 x 1300mm sheet size)



Bianca Luna
F3421

Satin NDF



Elemental Ash
F6363

Honed



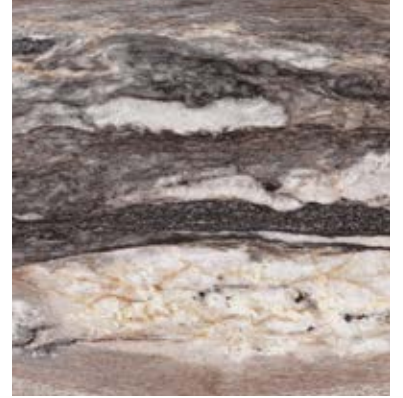
Elemental Concrete
F8830

Honed



Full sheet decor scan (3050 x 1300mm sheet size)

Take a closer look



Dolce Vita
F3420

AR Plus® Gloss



Elemental Graphite
F8833

Honed



Nero Grafite
F9485

Satin NDF



Jet Sequoia
F3476

AR Plus® Gloss

Full Range

Take a closer look



Soapstone Sequoia
F3459

Honed

Full sheet decor scan (3050 x 1300mm sheet size)



Silver Nacarado
F3425

Satin NDF



Concrete Formwood
F6362

Honed



Weathered Beamwood
F6410

Puregrain



Full sheet decor scan (3050 x 1300mm sheet size)

Take a closer look



Antique Mascarello
F3466

AR Plus® Gloss



Seasoned Planked Elm
F6477

Puregrain



Marbled Cappuccino
F9482

AR Plus® Gloss



Ferro Grafite
F9483

Satin NDF

Full Range

Take a closer look



Travertine Silver
F3458

AR Plus® Gloss

Full sheet decor scan (3050 x 1300mm sheet size)



Crema Mascarello
F3422

AR Plus® Gloss



Ivory Nacarado
F3426

Satin NDF



Breccia Paradiso
F3457

AR Plus® Gloss



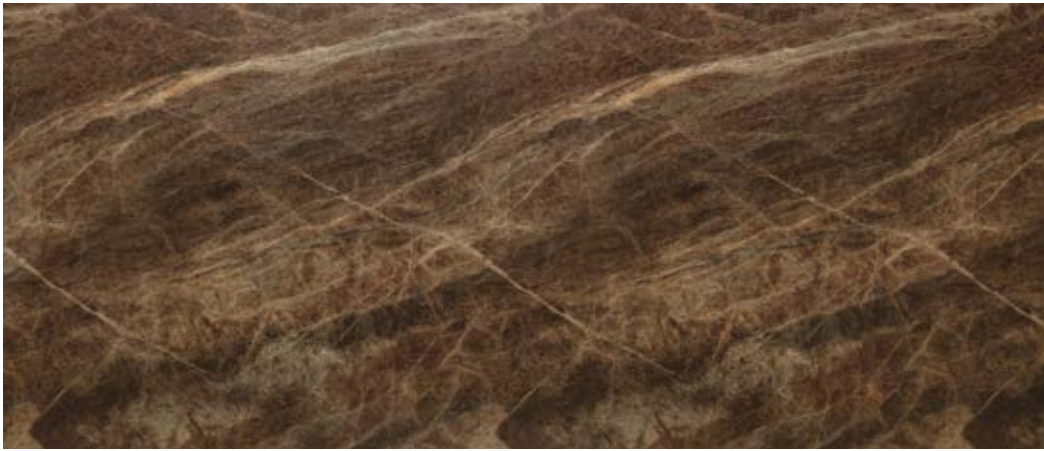
Full sheet decor scan (3050 x 1300mm sheet size)

Take a closer look



Elemental Corten
F8832

Honed



Slate Sequoia
F3462

AR Plus® Gloss



Salvaged Planked Elm
F9480

Puregrain



Blue Storm
F3467

AR Plus® Gloss

Full Range

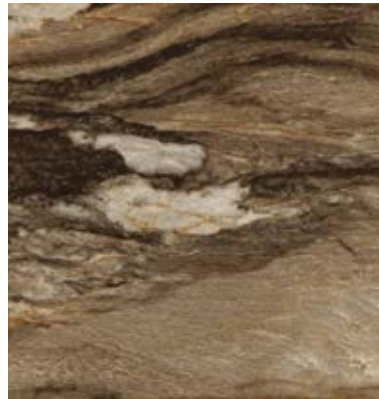
Take a closer look



Golden Mascarello
F3465

AR Plus® Gloss

Full sheet decor scan (3050 x 1300mm sheet size)



Dolce Macchiato
F3478

Etchings



Oxidised Beamwood
F9484

Puregrain



Bark Microplank
F6058

Naturelle



Textures

AR Plus® Gloss

Superior abrasion resistant high gloss is the perfect finish for luxurious, polished granites and marbles.

Honed

A low sheen highly tactile finish that emulates the look and feel of matt stone, combined with on trend concrete and soapstone to stunning effect.

Etchings

A softly polished and etched surface dappled with highlights from tiny factures and fissures reminiscent to those found in granite and stone.

Satin NDF

Satin NDF is totally smooth, not textured, with a low light reflection and inspired by natural, unpolished marble.

Puregrain

A timeless yet unique interpretation of a brushed, natural timber, that provides a natural looking and highly tactile surface.

Naturelle

A soft touch and elegant matt finish, with a subtle grain.



Size and availability

Code	Decor	Grade	Texture	Size
F3420	Dolce Vita	PAR	AR Plus® Gloss	3050 x 1300 mm
F3421	Bianca Luna	HGP	Satin NDF	3050 x 1300 mm
F3422	Crema Mascarello	PAR	AR Plus® Gloss	3050 x 1300 mm
F3425	Silver Nacarado	HGP	Satin NDF	3050 x 1300 mm
F3426	Ivory Nacarado	HGP	Satin NDF	3050 x 1300 mm
F3457	Breccia Paradiso	PAR	AR Plus® Gloss	3050 x 1300 mm
F3458	Travertine Silver	PAR	AR Plus® Gloss	3050 x 1300 mm
F3459	Soapstone Sequoia	HGP	Honed	3050 x 1300 mm
F3460	Calacatta Marble	PAR	AR Plus® Gloss	3050 x 1300 mm
F3462	Slate Sequoia	PAR	AR Plus® Gloss	3050 x 1300 mm
F3465	Golden Mascarello	PAR	AR Plus® Gloss	3050 x 1300 mm
F3466	Antique Mascarello	PAR	AR Plus® Gloss	3050 x 1300 mm
F3467	Blue Storm	PAR	AR Plus® Gloss	3050 x 1300 mm
F3476	Jet Sequoia	PAR	AR Plus® Gloss	3050 x 1300 mm
F3478	Dolce Macchiato	HGP	Etchings	3050 x 1300 mm
F6058	Bark Microplank	HGP	Naturelle	3050 x 1300 mm
F6362	Concrete Formwood	HGP	Honed	3050 x 1300 mm
F6363	Elemental Ash	HGP	Honed	3050 x 1300 mm
F6410	Weathered Beamwood	HGP	Puregrain	3050 x 1300 mm
F6477	Seasoned Planked Elm	HGP	Puregrain	3050 x 1300 mm
F8830	Elemental Concrete	HGP	Honed	3050 x 1300 mm
F8832	Elemental Corten	HGP	Honed	3050 x 1300 mm
F8833	Elemental Graphite	HGP	Honed	3050 x 1300 mm
F9480	Salvaged Planked Elm	HGP	Puregrain	3050 x 1300 mm
F9482	Marbled Cappuccino	PAR	AR Plus® Gloss	3050 x 1300 mm
F9483	Ferro Grafite	HGP	Satin NDF	3050 x 1300 mm
F9484	Oxidised Beamwood	HGP	Puregrain	3050 x 1300 mm
F9485	Nero Grafite	HGP	Satin NDF	3050 x 1300 mm

Formica® Laminate

Grade: HPL/EN 438-3 HGP

Horizontal. General purpose. Postforming high pressure decorative laminate.
(AR Plus 1.2mm nominal thickness, all other finishes 0.7mm nominal thickness).

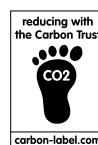
AR Plus® by Formica Group

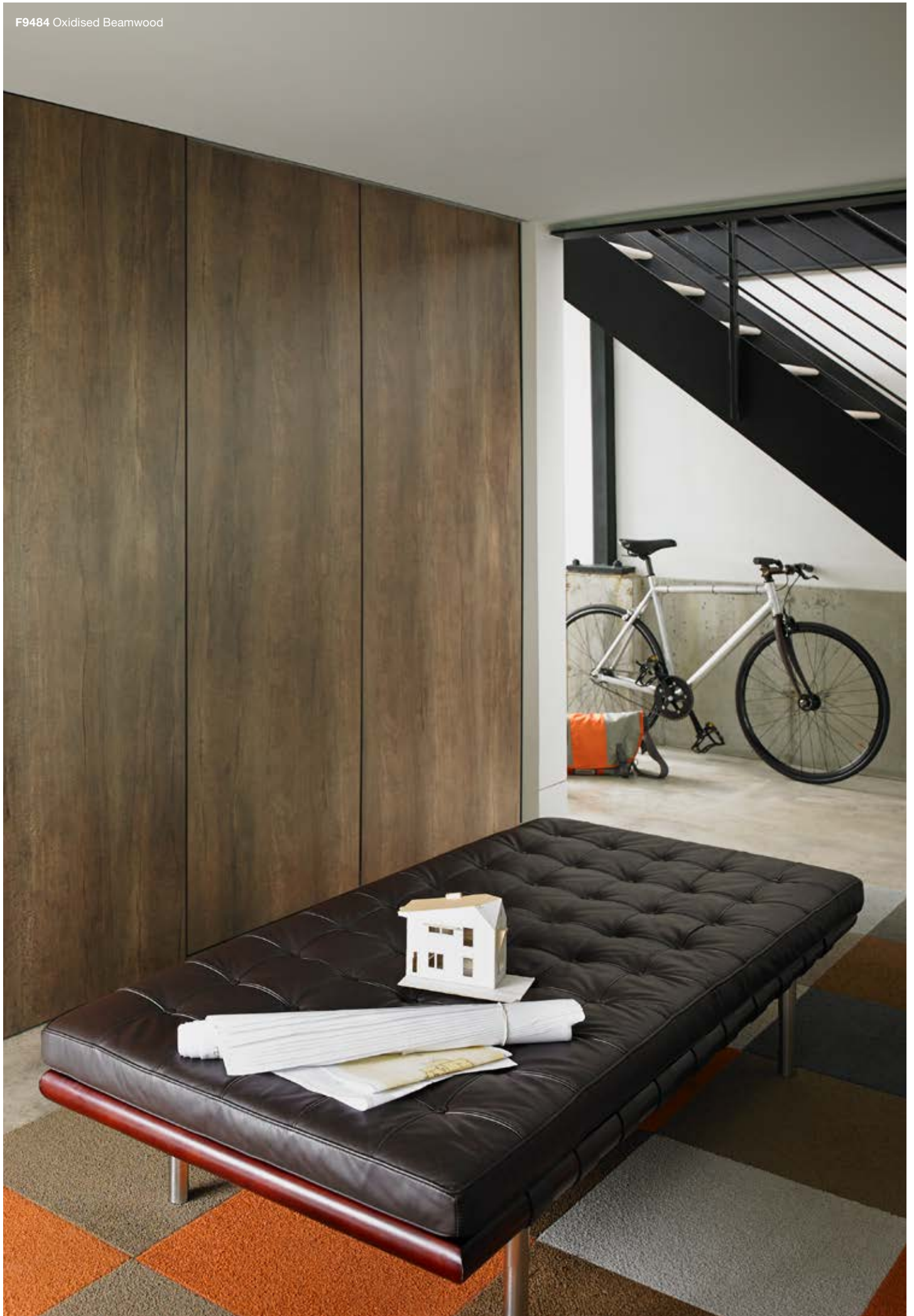
Grade: PAR

Abrasion-resistant High-gloss. Postforming high pressure decorative laminate.
PAR does not appear in the EN 438 grade classification system.

Fire retardant grade products are available on request.

Formica Compact grade products are available on request from 2mm-20mm.





Austria

Tel: +49 (0) 180 367 64 22
austria@formica.com

Belgium

Tel: +32 2 705 18 18
contact.belgie@formica.com

Denmark

Tel: +45 43 58 82 00
info.danmark@formica.com

Finland

Tel: +358 3 5800 200
info.fi nland@formica.com

France

Tel: +33 (0) 3 87 29 10 13
service.echantillons@formica.com

Germany

Tel: +49 (0) 180 367 64 22
kontakt.deutschland@formica.com

Holland

Tel: +31 (0) 70 413 48 20
contact.nederland@formica.com

Ireland

Tel: +353 1 872 4322
samples.uk@formica.com

Italy

Tel: +39 068 7502115
italia@formica.com

Middle East

Tel: +971 4 329 82 80
middle.east@formica.com

Morocco

Tel: +212 (0) 522472047
administration.maroc@formica.com

Norway

Tel: +47 800 13 016
info.norge@formica.com

Poland

Tel: +48 22 516 20 84/85
info.polska@formica.com

Russia

Tel: +7 495 646 07 25
Samples tel: +8 800 333 11 63
russia@formica.com

Spain

Tel: + 34 96 122 07 01 (opción 2)
contact.es@formica.com
muestras@formica.com

Sweden

Tel: +46 42 38 48 00
info.sverige@formica.com

Switzerland

Tel: +41 44 818 88 18
schweiz@formica.com

United Kingdom

Tel: +44 191 259 3912
Samples tel: +44 191 259 3512
samples.uk@formica.com

formica.com



A Fletcher Building Company

© 2017 The Diller Corporation

Formica, the Formica Anvil Device and AR Plus are registered trademarks of The Diller Corporation

