



VIVIX[®] Lap

HIGH PERFORMANCE WEATHERBOARD *by* FORMICA GROUP

VIVIX® Lap

HIGH PERFORMANCE WEATHERBOARD *by* FORMICA GROUP

VIVIX Lap® by Formica Group is an advanced exterior cladding product that creates great looking facades, offers outstanding weather protection, is quick and easy to install and requires little maintenance.

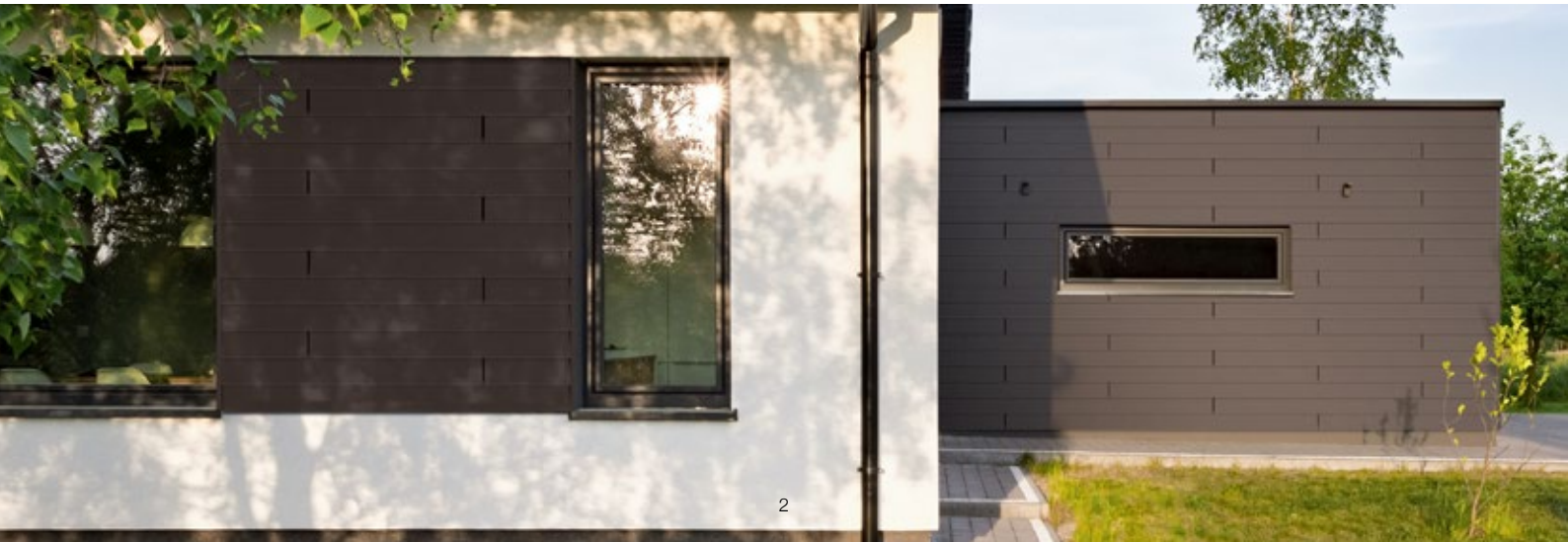
Taking inspiration from traditional timber weatherboard cladding, VIVIX Lap is an overlap cladding system that utilises modern, lightweight, highly engineered planks. Vivix Lap planks remove the need for coatings or treatments, edge sealing or painting, that are typically associated with wood and other cladding materials.

Perfectly balanced between form and function, VIVIX Lap is packed full of features and benefits, matching performance with outstanding aesthetics, either as full facade cladding or as a design feature in conjunction with other complementary materials. Colour co-ordinated fixings, profiles and trims create the perfect finish.

In VIVIX Lap, we have created a versatile, high performance cladding solution, that can be easily installed and most of all enjoyed and admired.

Make VIVIX Lap your exterior cladding choice.





VIVIX[®] Lap

HIGH PERFORMANCE WEATHERBOARD *by* FORMICA GROUP

High performance cladding,
whatever the weather



Weatherboard cladding that performs all year round

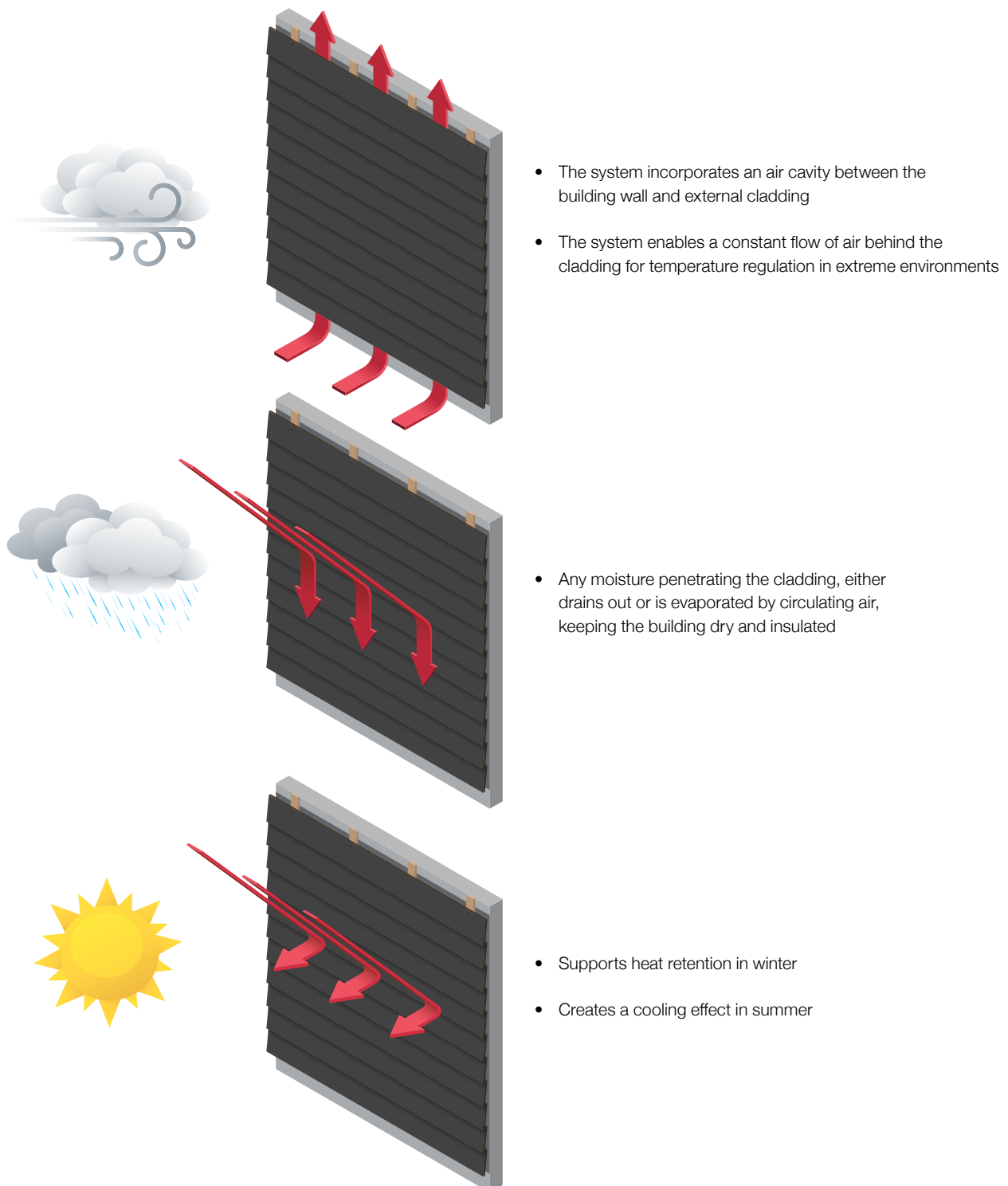
Winter, spring, summer, autumn...

VIVIX® Lap cladding loves all of the seasons and performs in all weather conditions.

Utilising the 'Rainscreen Principle', VIVIX Lap is an overlap cladding system that incorporates a ventilated cavity, providing continual movement of air within the system to regulate temperature and aid in moisture evaporation and drainage.

The 'Rainscreen Principle':

Cladding acts as a protective screen against the elements





Features and benefits



UV and weather resistant

ETAG034 accelerated weathering tested, showing no deterioration. Simulation subjected the system to heat/cold cycles ranging from -20 to +70° C*



Does not rot and is resistant to mold

Impact and abrasion resistant

Highly resilient to cracking and chipping

Practically maintenance free



10-year warranty

Euroclass B-s1, d0 Fire Retardant Certificate in accordance with European regulation EN 13501-1

System withstands both positive and negative wind loads as tested to the CWCT standard for building envelopes, in test exceeding wind speeds of 500mph*

** Generic testing that should be used as a guide only, on actual installations topography, elevation, geographical position and local building regulations must be considered.*

VIVIX® Lap

HIGH PERFORMANCE WEATHERBOARD *by* FORMICA GROUP

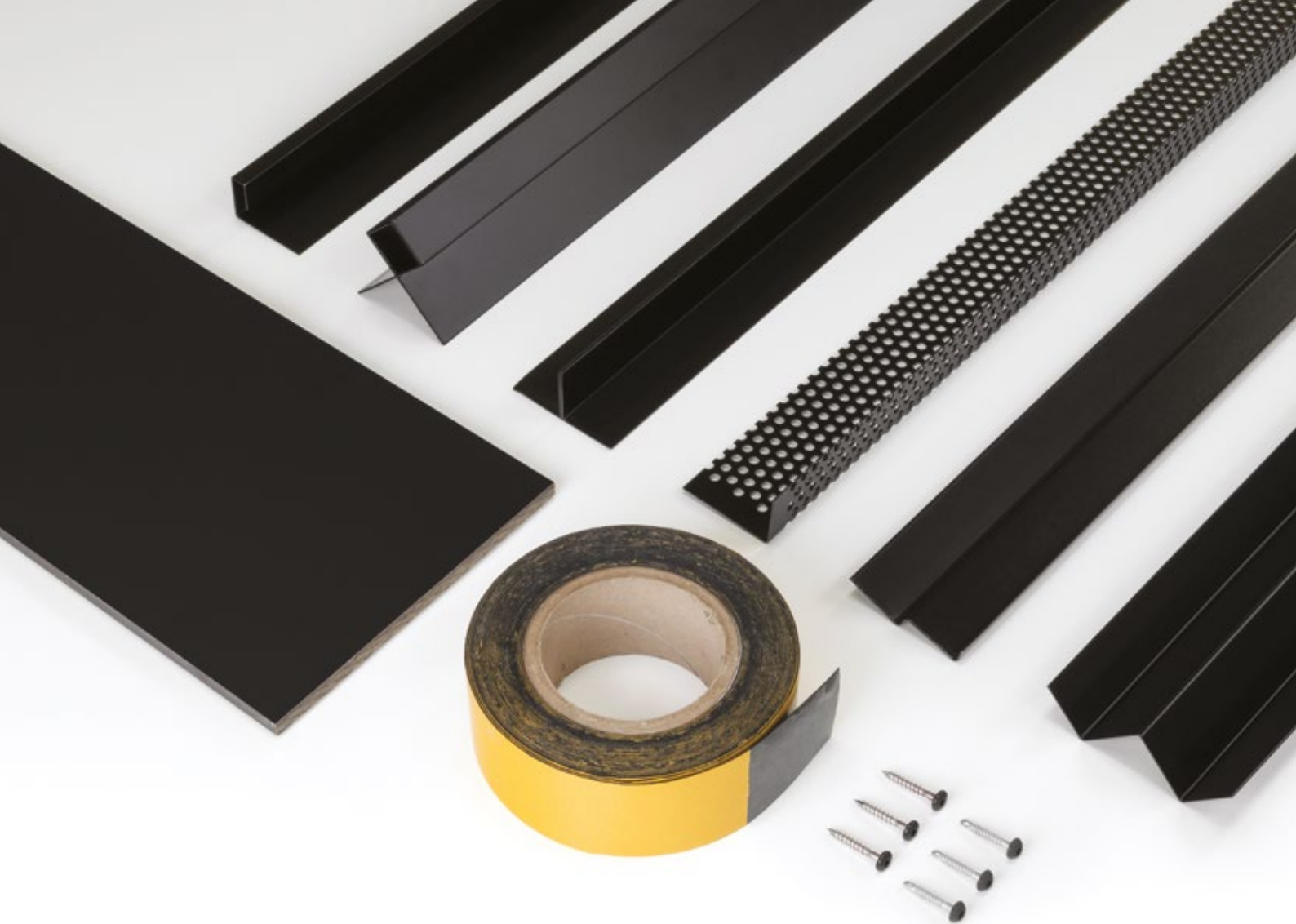
The cladding choice for installers

The VIVIX® Lap weatherboard system has been designed to make installation as quick and simple as possible. VIVIX Lap planks are lightweight and therefore easy to manoeuvre into position and fix. Planks can be easily site modified with minimal dust or mess.

The installation process couldn't be simpler, just cut to size, drill and fix planks in place. Unlike many other cladding materials, VIVIX Lap planks require no pre or post installation treatments or sealants, which not only speeds up installation, but also reduces overall service life cost.

VIVIX Lap cladding is simply screw fixed; fixings are then concealed by the next overlapping plank, creating clean, smooth lines.





Features and benefits



Pre-cut planks for quick installation
Lightweight planks (4.6Kg per plank) compared to other cladding materials
FSC® certified laminates
Made in Britain



Simple drill and screw fix mechanism for fast fitting
Ability to cut/modify planks as needed on site



Minimal dust and mess created during cutting and installation process
No sealants or painting required



Complementary profiles, trims and colour-matched screws available to achieve the perfect finish
Option to install on timber or metal framing
Additional insulation can be built into the system to improve a buildings thermal efficiency

VIVIX® Lap

HIGH PERFORMANCE WEATHERBOARD *by* FORMICA GROUP

A versatile cladding solution to transform any facade

The characteristics of VIVIX® Lap make it a highly usable system whatever the building type. It is a very cost effective method for over cladding older buildings, giving them a fresh appearance and greater appeal, while also enhancing the buildings performance and resistance to the elements.

On new build developments, VIVIX Lap can be designed into the scheme, to clad either the full facade or create design features, alongside complementary materials such as brick, render and glass.

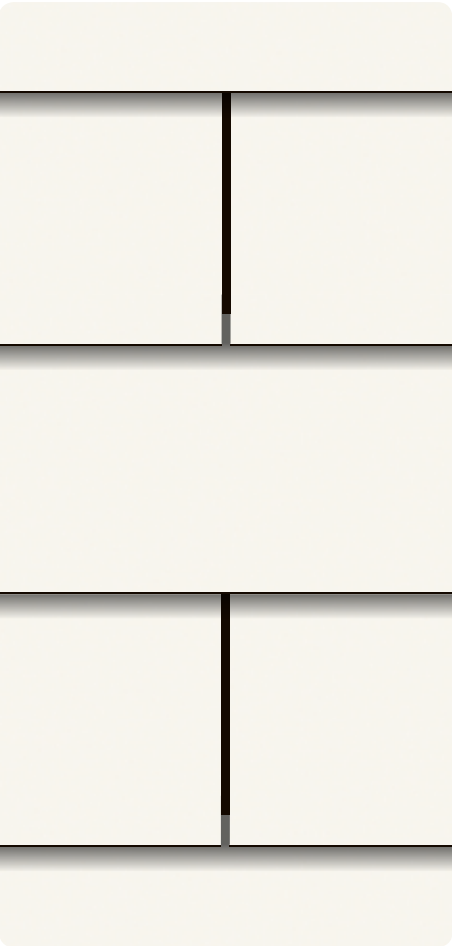
Appropriate for use on both residential and commercial projects, VIVIX Lap weatherboard cladding can also be extended beyond main buildings and dwellings, onto out buildings such as garden offices, garages, car ports and sheds.

VIVIX Lap creates visually striking aesthetics, with a choice of 8 essential plain colours, from fresh Alpino White to sleek Diamond Black and 4 TrueScale wood decors in cool to warm wood tones.

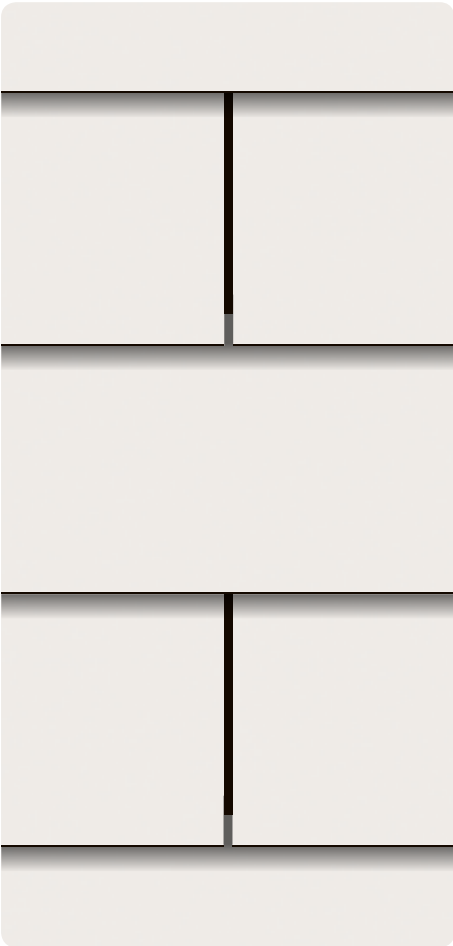




Range to view



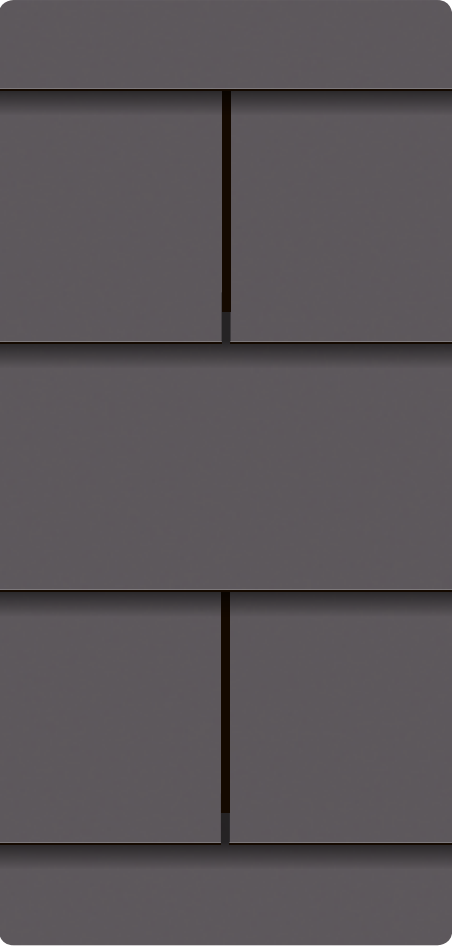
F1040 Alpino Matte 58



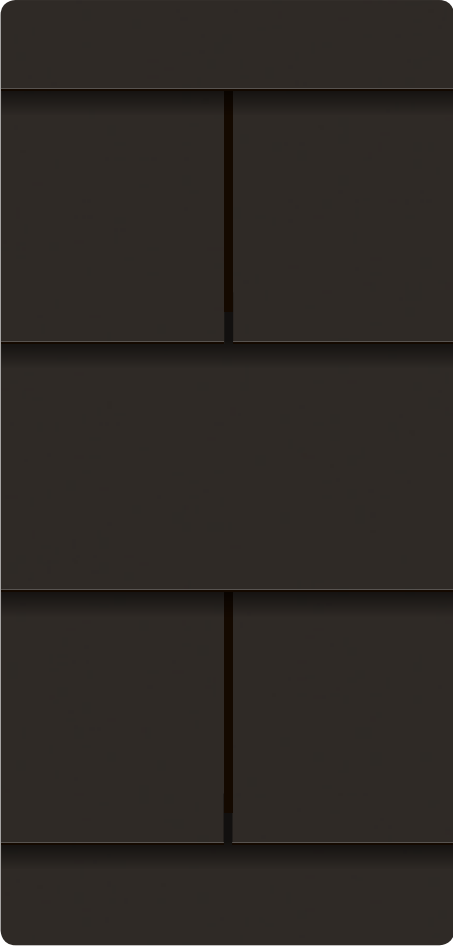
F2010 Malibu Matte 58



F7858 Pumice Matte 58



F2297 Terril Matte 58



F2253 Diamond Black Matte 58



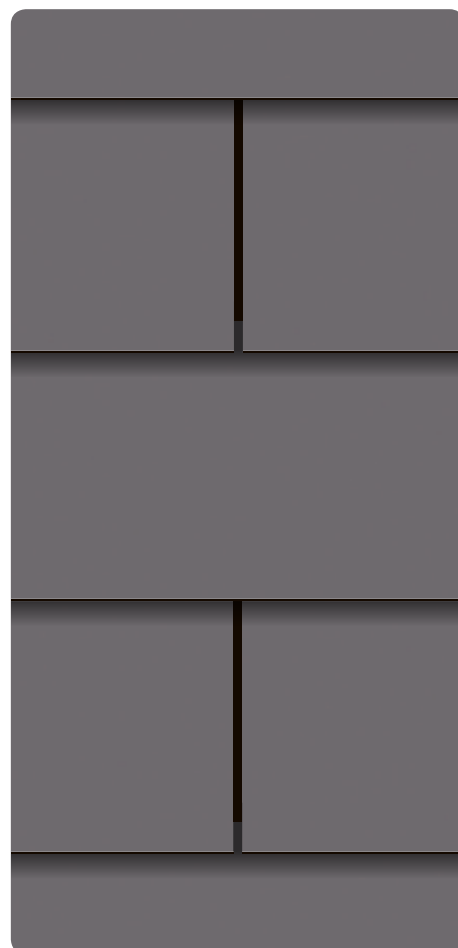
F6053 Chalet Oak Matte 58



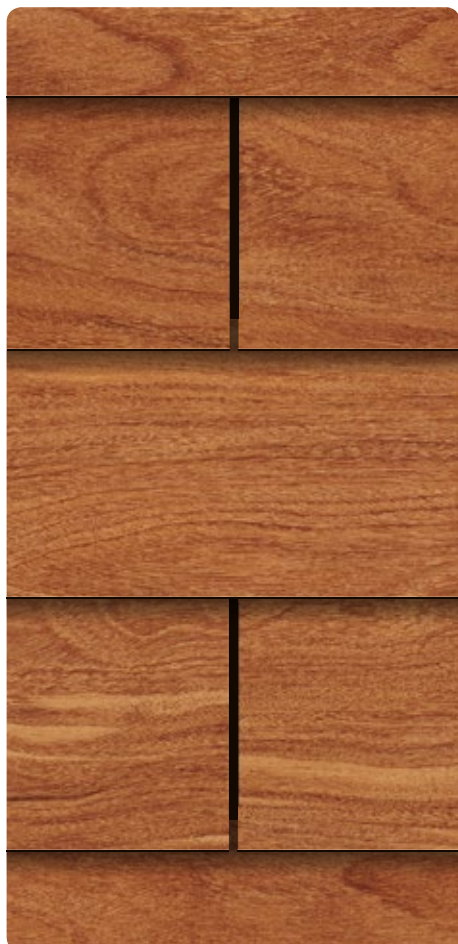
F2833 Sandstone Matte 58



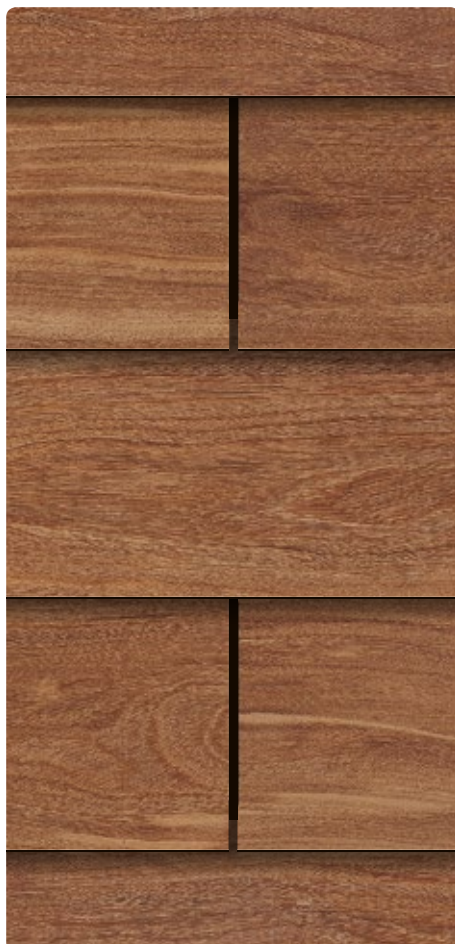
F1535 Tornado Matte 58



F7912 Storm Matte 58



F6059 Sienna Cumaru Matte 58



F6060 Marron Cumaru Matte 58

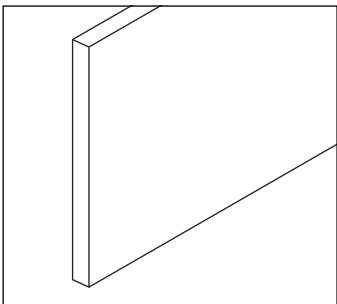
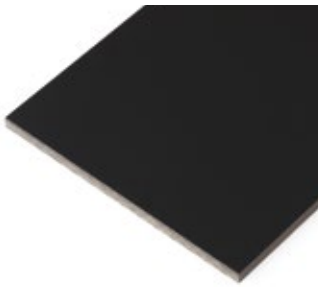


F6050 Barn Oak Matte 58

Finishing touches

VIVIX® Lap planks, screws, profiles, trims and tools

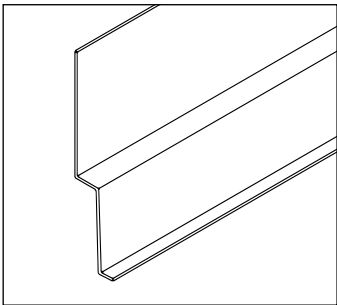
Powder coated profiles and screws are offered to provide the perfect finishing touch. Please note, powder coated colours are complementary to the VIVIX® Lap decors, they are not exact matches.



VIVIX® Lap Planks

2990 x 180 x 6mm
EDF Grade
4 planks per pack

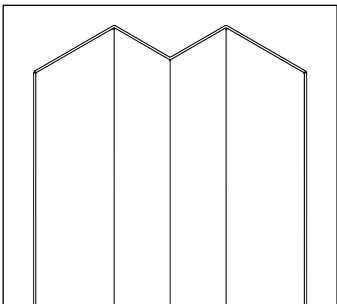
Available decors



Aluminium Horizontal Starter Profile

2990 x 30/30 x 5mm

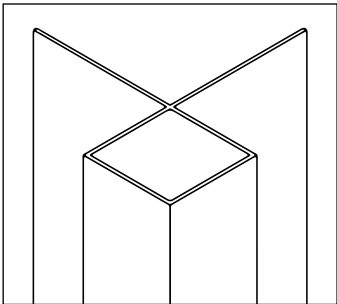
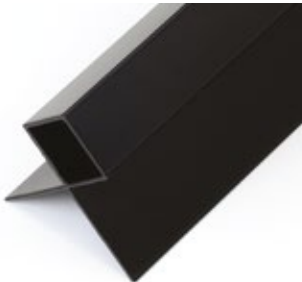
Available colours



Aluminium Internal Corner Profile

3000 x 25 x 35mm

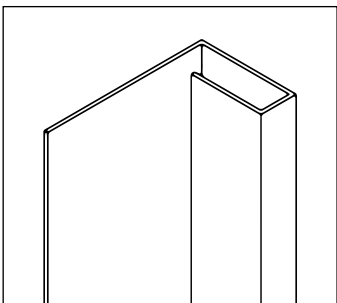
Available colours



Aluminium External Corner Profile

3000 x 25 x 40mm

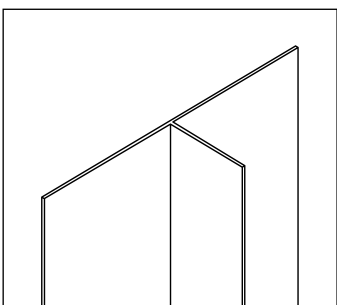
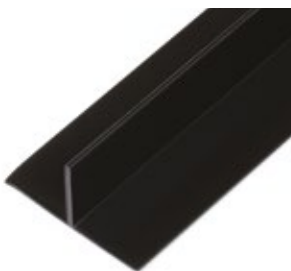
Available colours



Aluminium Edge Profile

3000 x 10 x 27mm

Available colours



Aluminium Joint Profile

3000 x 20 x 35mm

Available colours





Aluminium Perforated Closure

3000 x 30 x 50mm
3000 x 30 x 100mm

Available colours



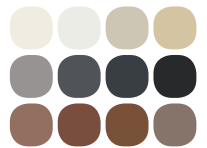
Anodised Black



Stainless Steel Screw to Wood

(A4 grade)
28 (l) x 4.3 (d) x 9.5mm (head dia.)
100 screws + Torx bit

Available colours



Stainless Steel Screw to Metal

(A4 grade)
25 (l) x 4.2 (d) x 9.5mm (head dia.)
100 screws + Torx bit

Available colours



Drill Bit for Fixed Points

4.3mm diameter



Drill Bit for Sliding Points

6.5mm diameter



EPDM/Joint Gasket

Self Adhesive
25m roll (l) x 50mm (w)
25m roll (l) x 105mm (w)

Available colours

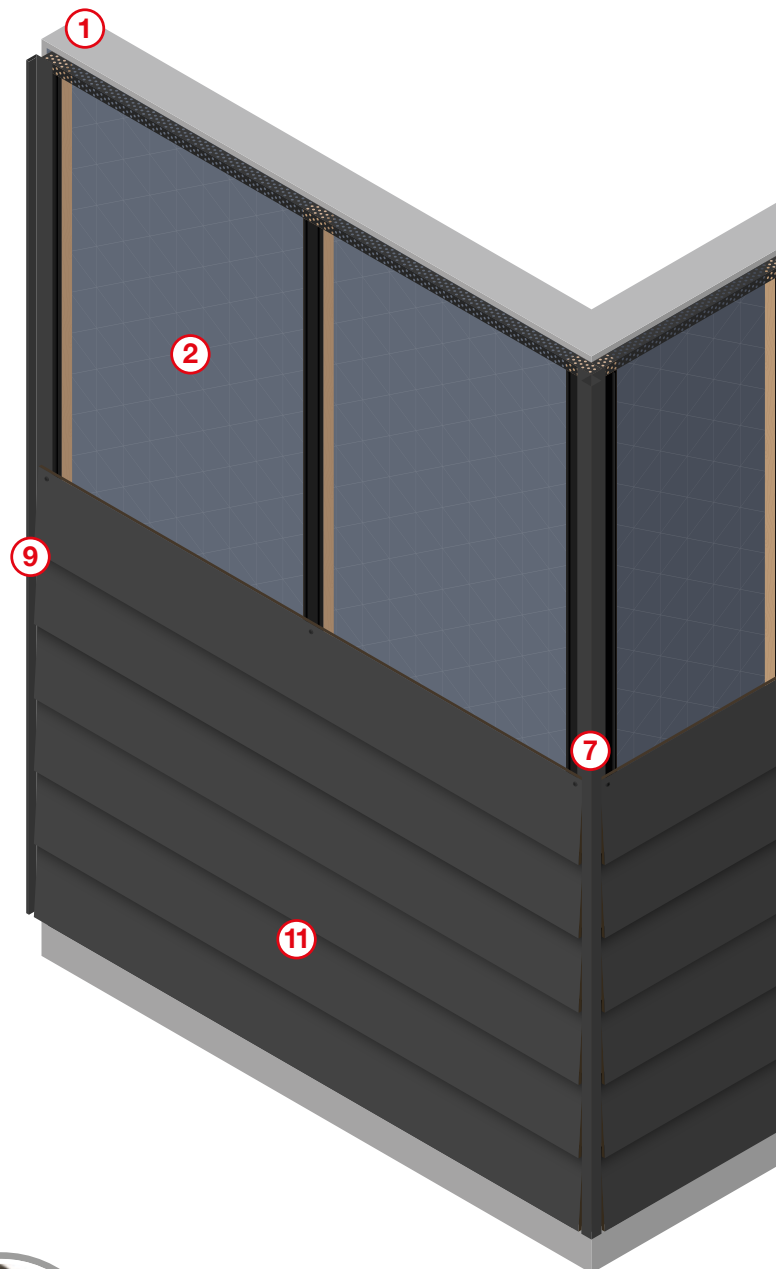
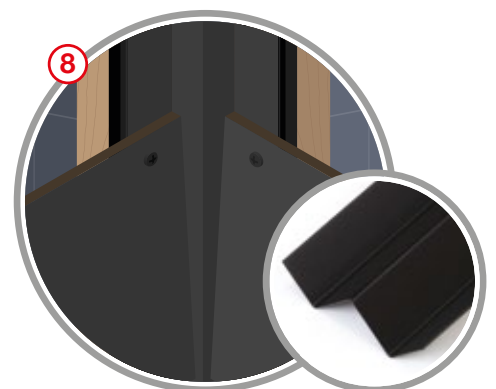
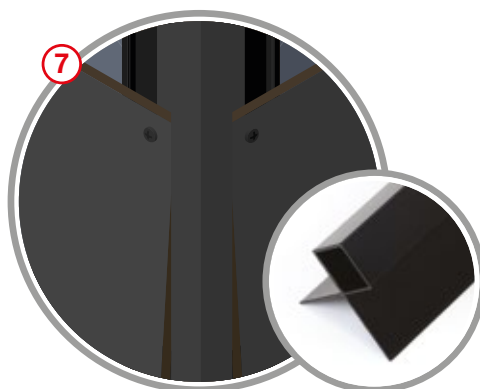
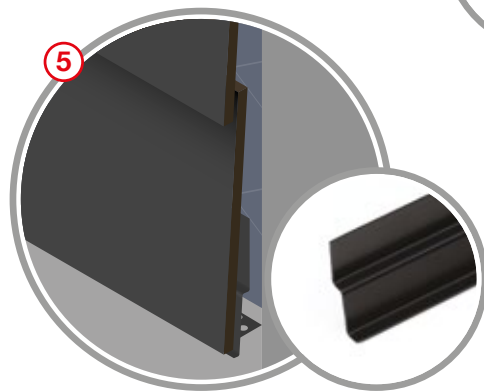
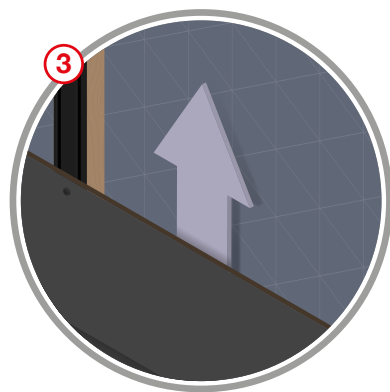


VIVIX® Lap

HIGH PERFORMANCE WEATHERBOARD *by FORMICA GROUP*

Weatherboard system is made up of the following elements:

1. Substructure, which transmits load to the structural wall (Timber battens/ Steel frames)
2. Breathable waterproof membrane
3. Air cavity
4. Thermal insulation (if required)
5. Perforated Closure
6. EPDM Gasket
7. External Corner Profile
8. Internal Corner Profile
9. Edge Profile
10. Lap Joint Profile
11. VIVIX® Lap planks
12. Plank fixing screws

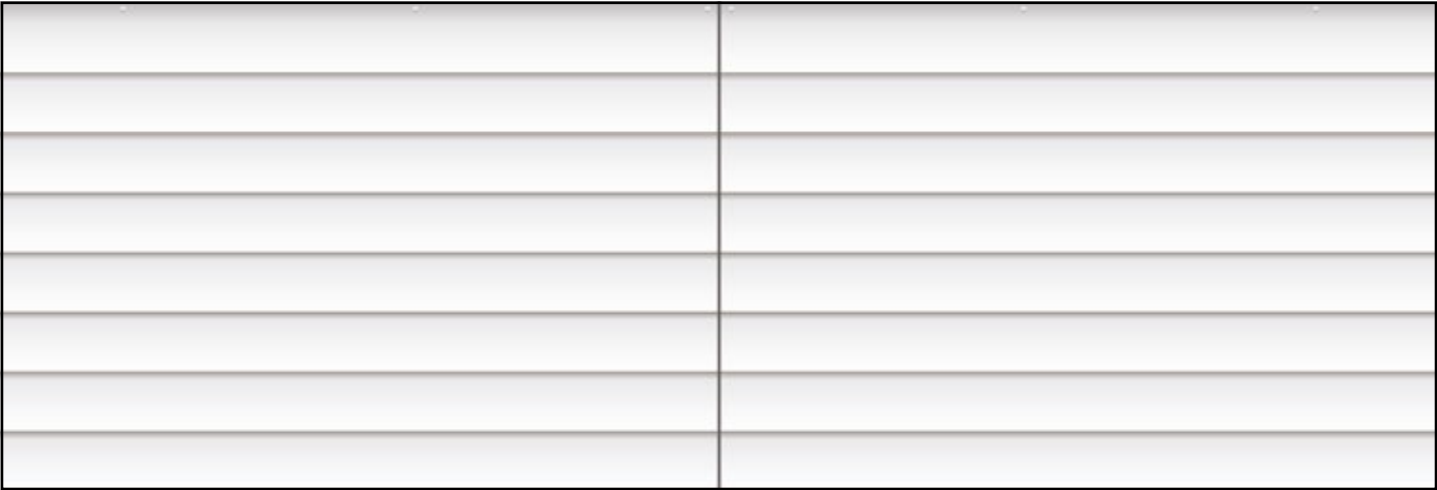




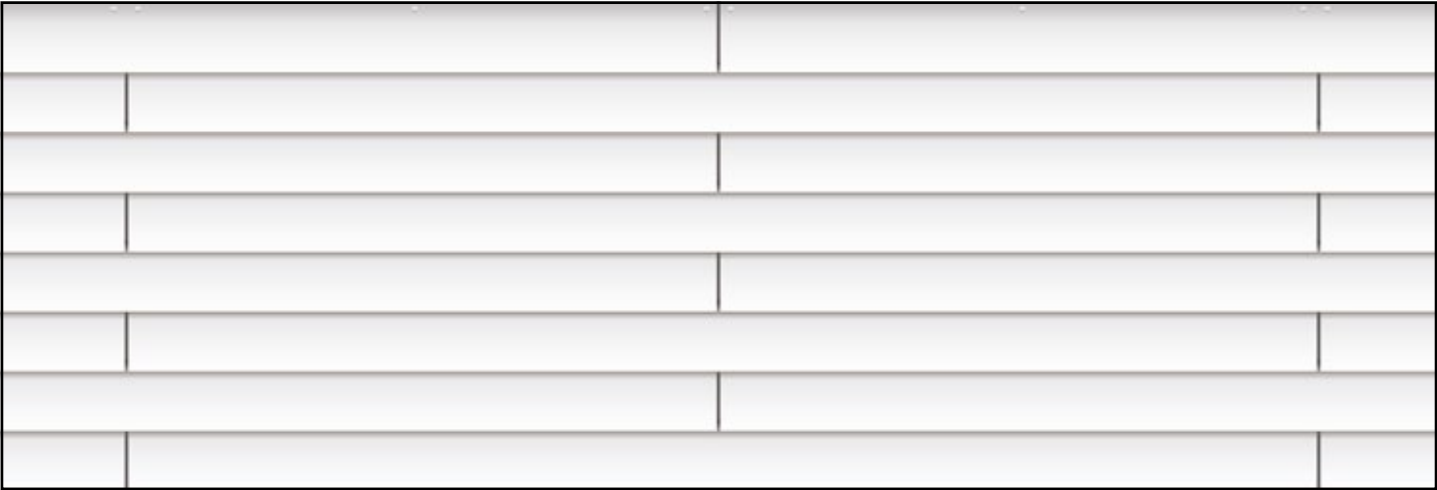
Plan to succeed

A variety of cladding arrangements are possible with VIVIX® Lap planks.

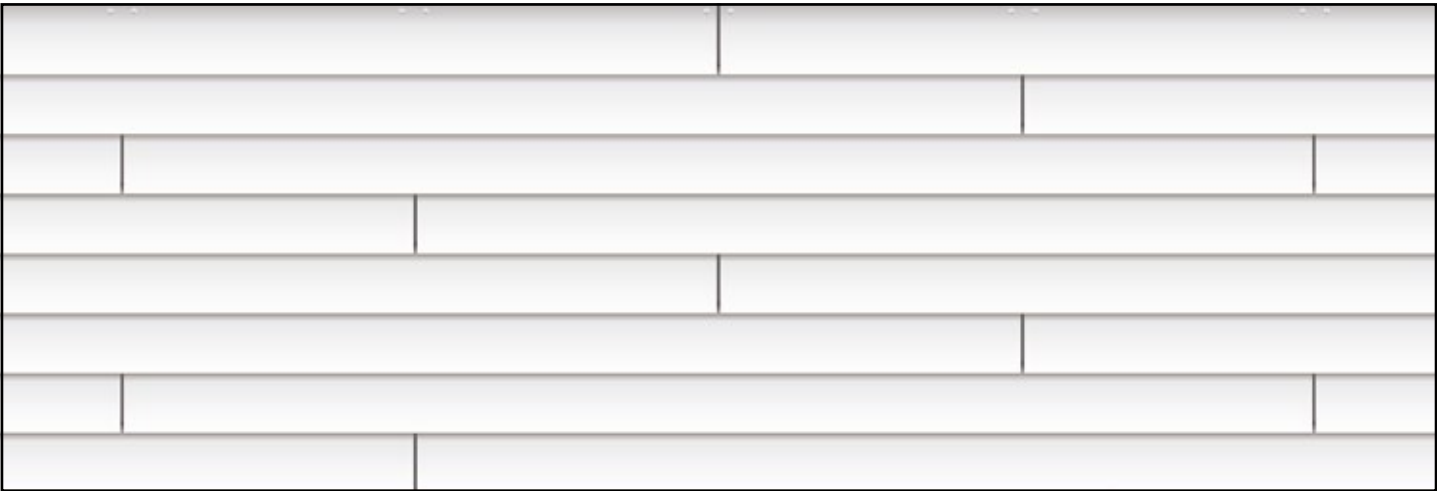
Straight Joint Arrangement



Semi Pattern Arrangement



Random Arrangement



It is recommended in advance of installation, to create a cladding plan. This will help to calculate framing requirements, location of fixing points and quantities of cladding planks, fixings and finishing profiles required.

Order all required materials well in advance of installation, to ensure availability in the right quantity of all relevant materials.

Consideration needs to be given to local circumstances, for example building design, climate, wind load and local building regulations and independent advice from a certified construction professional is recommended.

All in the detail

Size and availability

VIVIX® Lap Planks

	Range	Code	Decor	NCS®	RAL®	Finish	Length (mm)	Width (mm)	Thickness (mm)	Weight Per Plank (Kg)	Grade
	Colors	F1040	Alpino	S 0502-G50Y	9010	Matte 58	2990	180	6	4.6	EDF
	Colors	F2010	Malibu	S 1000-N		Matte 58	2990	180	6	4.6	EDF
	Colors	F7858	Pumice	S2005-Y20R		Matte 58	2990	180	6	4.6	EDF
	Colors	F2833	Sandstone	S2010-Y30R		Matte 58	2990	180	6	4.6	EDF
	Colors	F1535	Tornado	S 4500-N	7036	Matte 58	2990	180	6	4.6	EDF
	Colors	F7912	Storm	S 6502-B	7015	Matte 58	2990	180	6	4.6	EDF
	Colors	F2297	Terril	S 7502-B	7016	Matte 58	2990	180	6	4.6	EDF
	Colors	F2253	Diamond Black	S 9000-N	9011	Matte 58	2990	180	6	4.6	EDF
	Woods	F6053	Chalet Oak			Matte 58	2990	180	6	4.6	EDF
	Woods	F6059	Sienna Cumaru			Matte 58	2990	180	6	4.6	EDF
	Woods	F6060	Marron Cumaru			Matte 58	2990	180	6	4.6	EDF
	Woods	F6050	Barn Oak			Matte 58	2990	180	6	4.6	EDF

VIVIX® Lap Plank decors

VIVIX® Lap Accessories

Range	Code	Decor	Accessory colour matches		Screws to wood		Screws to metal		Internal corner profile	External corner profile	Edge profile	Lap joint profile
			NCS®	SST	SSM	ICP	ECP	EPR	LJP			
	Colors	F1040	Alpino	S0502-G50Y	VA1040SST	VA1040SSM	VA1040ICP	VA1040ECP	VA1040EPR	VA1040LJP		
	Colors	F2010	Malibu	S1000-N	VA2010SST	VA2010SSM	VA2010ICP	VA2010ECP	VA2010EPR	VA2010LJP		
	Colors	F7858	Pumice	S2005-Y20R	VA7858SST	VA7858SSM	VA7858ICP	VA7858ECP	VA7858EPR	VA7858LJP		
	Colors	F2833	Sandstone	S2010-Y30R	VA2833SST	VA2833SSM	VA2833ICP	VA2833ECP	VA2833EPR	VA2833LJP		
	Colors	F1535	Tornado	S4500-N	VA1535SST	VA1535SSM	VA1535ICP	VA1535ECP	VA1535EPR	VA1535LJP		
	Colors	F7912	Storm	S6502-B	VA7912SST	VA7912SSM	VA7912ICP	VA7912ECP	VA7912EPR	VA7912LJP		
	Colors	F2297	Terril	S7502-B	VA2297SST	VA2297SSM	VA2297ICP	VA2297ECP	VA2297EPR	VA2297LJP		
	Colors	F2253	Diamond Black	S9000-N	VA2253SST	VA2253SSM	VA2253ICP	VA2253ECP	VA2253EPR	VA2253LJP		
	Woods	F6053	Chalet Oak	S5020-Y20R	VA6053SST	VA6053SSM	VA6053ICP	VA6053ECP	VA6053EPR	VA6053LJP		
	Woods	F6059	Sienna Cumaru	S5040-Y30R	VA6059SST	VA6059SSM	VA6059ICP	VA6059ECP	VA6059EPR	VA6059LJP		
	Woods	F6060	Marron Cumaru	S6030-Y20R	VA6060SST	VA6060SSM	VA6060ICP	VA6060ECP	VA6060EPR	VA6060LJP		
	Woods	F6050	Barn Oak	S6010-Y10R	VA6050SST	VA6050SSM	VA6050ICP	VA6050ECP	VA6050EPR	VA6050LJP		

Range	Name	Horizontal starter profile	Perforated closure 50mm	Perforated closure 100mm	Drill bit fixed point 4.3mm	Drill bit sliding point 6.5mm	EPDM 50mm width	EPDM 105mm width
		HST	PCL	PCL	DFP	DSP	RJT	RJT
All	Non decorative / factory finish	VA9999HST	VA0050PCL	VA0100PCL	VA9999DFP	VA9999DSP	VA0050RJT	VA0105RJT

Quality guaranteed

VIVIX® Lap solid core planks consist of layers of specially selected papers, impregnated with thermosetting resins, fused together into robust, weather resistant cladding.

VIVIX Lap planks are manufactured and tested to European Standard EN 438:2016 parts 6 & 7 and provide outstanding levels of colourfastness, UV and weather resistance and durability.

EDF - Exterior grade, severe use, flame retardant grade. Euroclass B-s1, d0 Fire Retardant Certificate in accordance with European regulation EN 13501-1.

VIVIX Lap planks are covered by a 10 year limited warranty in its primary function as rain screen cladding and against colour fade and delamination, provided VIVIX Lap recommended use and installation guidelines are followed.

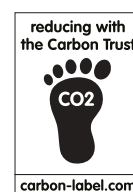
Powder coated profiles and screws are offered to provide the perfect finishing touch. Please note, powder coated colours are complementary to the VIVIX® Lap decors, they are not exact matches.

The performance features are for general reference only. For more specific product information, including installation guidance, technical data and warranties please refer to formica.com (Knowledge).

VIVIX Lap planks are manufactured in Europe to ISO9001 standards. Life cycle assessed (LCA) in accordance with ISO 14044. Formica Group manufacturing plants accredited to ISO 14001 environmental management system.



Please ask for
FSC® certified products



Belgium

Tel: +32 28081964
contact.belgie@formica.com

Denmark

Tel: +45 89872925
info.danmark@formica.com

Finland

Tel: +358 942454660
info.finland@formica.com

France

Tel: +33 977554783
service.echantillons@formica.com

Germany

Tel: +49 1803676422
kontakt.deutschland@formica.com

Italy

Tel: +39 0687502115
italia@formica.com

Morocco

Tel: +44 1916220109
administration.maroc@formica.com

Netherlands

Tel: +31 704134820 / +31 707100150
contact.nederland@formica.com

Norway

Tel: +47 80013016
info.norge@formica.com

Poland

Tel: +48 223079624
info.polska@formica.com

Russia

Tel: +44 1912593118
csd.russia@formica.com

Spain

Tel: +34 961140414
contact.es@formica.com

Sweden

Tel: +46 844680611
info.sverige@formica.com

UK & Ireland

Tel: +44 1916220096
business.development@formica.com



© 2018 The Diller Corporation.
Formica, the Formica Anvil Device and Vivix are registered trademarks of The Diller Corporation.