

## LAMBETH RANGE



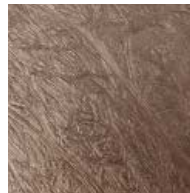
### Multiple configuration seating

The popular Lambeth seat has been designed to offer a wide range of seating configurations, all from a standard 3 person / 1800mm long seat. In particular, there are many DDA-compliant arm arrangement options, with selected 2- and 3-arm assemblies designed to make it easier for elderly and less-able users to manoeuvre on and off the seat from the side. The Lambeth is an ideal seating solution for local neighbourhood and urban park schemes, which demand simple styling, user-comfort and a robust construction. Seat standards and arms are cast in tough ductile iron to ensure vandal resistance and longevity, and the seat slats can be supplied in durable iroko timber or recycled plastic material. Other products within the Lambeth range include a bollard, litter bin and cycle stand.



### Installation:

Each seat standard is pre-drilled with 2no. holes for bolting the seat down to a foundation block with suitable M12 ground anchors (not supplied).

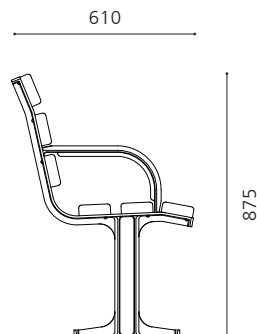
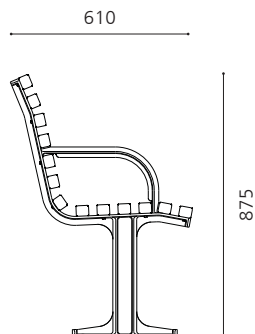


Recycled plastic slat:  
**Brown**



Recycled plastic slat:  
**Black**

## LAMBETH RANGE



### Extended range

The characteristic arched profile of the Lambeth seat armrest is also employed on a number of other products in the family, including a bollard, cycle stand and litter bin. Please refer to the relevant product category e-brochure for full details of these products.

#### LAMBETH - TIMBER SLATS

3 person seat 1800mm long  
Cast ductile iron seat standards  
Iroko timber slats, smooth planed finish

#### LAM 602 BST

2 seat standards, no arms

#### LAM 622 BST

2 seat standards, 2 end arms

#### LAM 623 BST

3 seat standards, 2 arms (1 end & 1 middle)

#### LAM 632 BST

2 end seat standards, 3 arms (1 end & 2 centres)

#### LAM 633 BST

3 seat standards, 3 arms (2 ends & 1 middle)

#### LAM 642 BST

2 seat standards, 4 arms (2 ends & 2 centres)

#### LAMBETH - RECYCLED PLASTIC SLATS

3 person seat 1800mm long  
Cast ductile iron seat standards  
Recycled plastic slats, in brown or black

#### LAM 602 BP

2 seat standards, no arms

#### LAM 622 BP

2 seat standards, 2 end arms

#### LAM 623 BP

3 seat standards, 2 arms (1 end & 1 middle)

#### LAM 632 BP

2 end seat standards, 3 arms (1 end & 2 centres)

#### LAM 633 BP

3 seat standards, 3 arms (2 ends & 1 middle)

#### LAM 642 BP

2 seat standards, 4 arms (2 ends & 2 centres)

#### OPTIONS:

- Other arm / leg configurations
- Seat standards in painted finish to any RAL colour reference

