

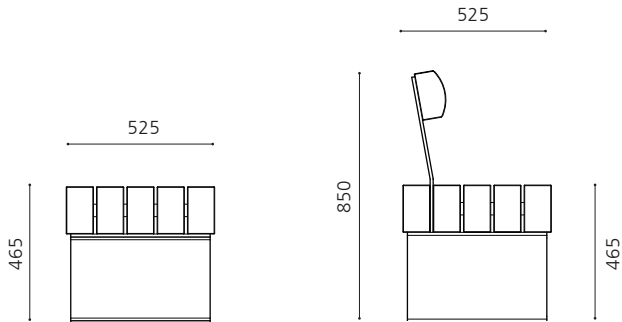
## FORDHAM RANGE

### Heavy duty seat, bench & table range

The Fordham steel and timber seating offers a bold appearance, heavy duty materials and a robust construction designed to offer the maximum resistance to vandalism required in tough urban environments. The bench is the basic form of the range, to which a backrest can be added to form a seat. Bench supports are fabricated I-beam profiles hot dipped galvanised as standard, on which are mounted iroko timbers (in the largest timber section profile across our entire seating range) with selected visible fixings, all combining to give a contemporary industrial aesthetic. Backrest slats are supported by a durable galvanised steel frame. Armrests in folded steel plate are available on all seats and benches, with standard fixing positions to maximise the useable seating space. Seats and benches are available in 6 standard lengths to comfortably accommodate up to 5 people, and the table is offered in 2 standard sizes, corresponding to 2 mid-size seating lengths.



## FORDHAM RANGE



### FORDHAM SEATING

Galvanised steel support frame with iroko timber slats, smooth planed finish

#### BENCHES

##### FOR B5

1500mm long

##### FOR B6

1800mm long

##### FOR B7

2100mm long

##### FOR B8

2350mm long

##### FOR B9

2685mm long

##### FOR B10

3000mm long

#### SEATS

##### FOR 5

1500mm long

##### FOR 6

1800mm long

##### FOR 7

2100mm long

##### FOR 8

2350mm long

##### FOR 9

2685mm long

##### FOR 10

3000mm long

#### OPTIONS:

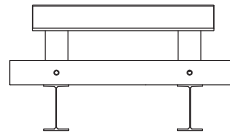
- Polyester powder coated steelwork
- Armrests
- Timbers with UV protective finish

#### Installation:

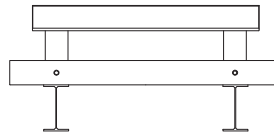
Both seat / bench supports are pre-drilled with 4no. holes for M16 ground fixings (not supplied).

### Seat backrests

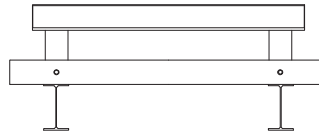
Backrests, comprising a single timber supported on wide steel plates attached to the seat supports, are shorter than the seating platforms, as shown below.



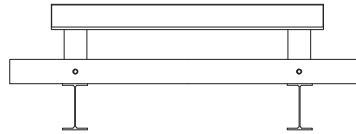
- **FOR 5** seat platform 1500mm long, backrest 1200mm long



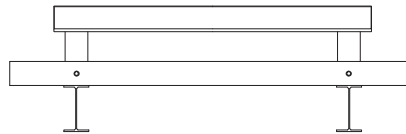
- **FOR 6** seat platform 1800mm long, backrest 1500mm long



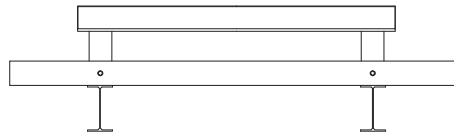
- **FOR 7** seat platform 2100mm long, backrest 1800mm long



- **FOR 8** seat platform 2350mm long, backrest 1800mm long



- **FOR 9** seat platform 2685mm long, backrest 2100mm long



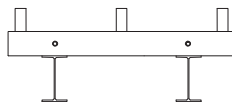
- **FOR 10** seat platform 3000mm long, backrest 2100mm long

## FORDHAM RANGE

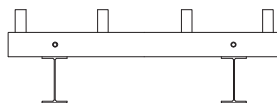


### Armrests

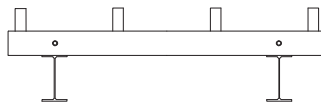
Armrests are manufactured from heavy duty folded steel bars and can be pre-fitted to both benches and seats. Shown below are the maximum number of armrests for each seat / bench length that maintain suitable width seating spaces between.



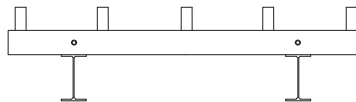
- **FOR B5 / FOR 5** 1500mm long, 3 arms max, 600mm spaces between



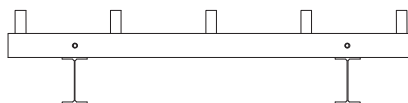
- **FOR B6 / FOR 6** 1800mm long, 4 arms max, 475mm spaces between



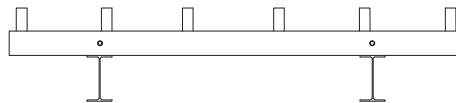
- **FOR B7 / FOR 7** 2100mm long, 4 arms max, 575mm spaces between



- **FOR B8 / FOR 8** 2350mm long, 5 arms max, 475mm spaces between



- **FOR B9 / FOR 9** 2685mm long, 5 arms max, 560mm spaces between



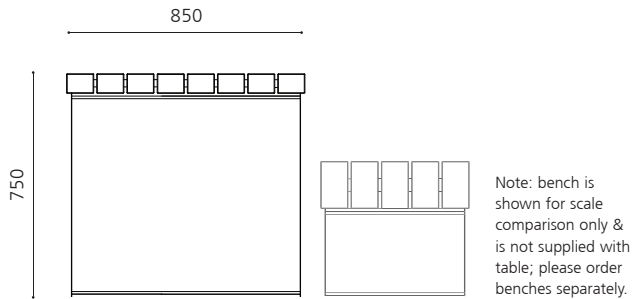
- **FOR B10 / FOR 10** 3000mm long, 6 arms max, 500mm spaces between



## FORDHAM RANGE

### Coordinated tables

The Fordham table is of a similar construction to the bench and seat from the same range, though the timber top slats are less deep, so more comfortable for the table user. Tables are available in 2 lengths, corresponding with 2 of the standard seating lengths. The option of a finish treatment to the table-top slats is advisable, as it provides not only UV protection that maintains the colour of the timber for longer, but also provides a degree of resistance to general grime and is easier to wipe clean.



### FORDHAM TABLES

Galvanised steel support frame with iroko timber slats, smooth planed finish

#### FOR T6

1800mm long

#### FOR T8

2350mm long

#### OPTIONS:

- Polyester powder coated steelwork
- Timbers with UV protective finish

#### Installation:

Both table supports are pre-drilled with 4no. holes for M16 ground fixings (not supplied).

