



## ZENITH® LITTER BINS & CIGARETTE BINS



## ZENITH® LITTER BIN RANGE

### Introducing the Zenith range of litter bins

The Zenith® has become one of the most popular products in Furnitubes' litter bin range since its introduction over 10 years ago. All bins feature an integral lid to prevent rainwater ingress into the bin, and a side-opening door fitted with a positive engagement slam lock and operated by a simple tri-lock. Stylish, strong and durable, Zenith bins are offered in 3 basic sizes, in a choice of a surface-mounted version for level sites or fitted to a short pedestal for below ground fixing that suits sloped sites. The entire range is available in a galvanised steel construction with a polyester powder coated finish, or in grades 304 or 316 stainless steel in a satin or bright polished finish. A rodent bait tray is a standard feature on surface-mounted versions, and further options across the range include cigarette stubber plates and independent ash waste liners, and a variety of options for graphic displays of the bin's function and / or corporate branding. Dedicated cigarette bins complete the litter bin range and the extended Zenith family includes coordinated designs of bollards, cycle stands and seating that are a popular choice for public realm locations and education sites in particular.

**MADE IN  
BRITAIN** 

At Furnitubes we believe in the positive promotion of British manufacturing and the benefits that it brings to the British economy. Manufacturing in Britain also offers a more sustainable solution, with transportation distances and associated environmental impacts minimised. Wherever you see the **Made in Britain** logo you can be assured that the product is manufactured in Britain.

Most photos of surface-mounted litter bins shown in this brochure are of the Mk1 model. The recently introduced Mk2 bin is as shown on illustrations on following pages. The main differences between the old and new models are internal but one change which affects the appearance is the raised height of the base plinth and door, which is designed to offer more clearance for situations where the bin is installed on or adjacent to sloping ground.



## ZENITH® LITTER BIN RANGE

### A model to suit all sites

The choice of size, materials, finish and installation types create a wide range of standard product combinations to suit a variety of sites. Dark-coloured powder coated steel bins are a popular alternative to traditional cast iron litter bins for historic settings, but the variety of available colours also allows coordination with corporate branding or architectural features. Stainless steel bins by contrast are generally more suited to contemporary sites such as shopping streets / malls and commercial developments. This range of options and the choice of add-on features also allows you to tailor the specification to suit your budget. Whichever your chosen combination, all Zenith bins offer a robust construction and stylish appearance as standard. Standard options are summarised below, together with examples of the range of styles and features that are offered by the Zenith range of litter bins.

#### SIZE / CAPACITY:

- Ø375mm / 40-45\* litres
  - Ø500mm / 80-90\* litres
  - Ø540mm / 115-125\* litres
- (\* larger capacities are surface-mounted versions)

#### MATERIALS & FINISHES:

- Galvanised steel + polyester powder coated finish
- Stainless steel in various grades & finishes
- Plain or perforated panels

#### INSTALLATION:

- Surface-mounted or bolting down to the ground
- Pedestal-mounted for below-ground fixing

#### FURTHER OPTIONS:

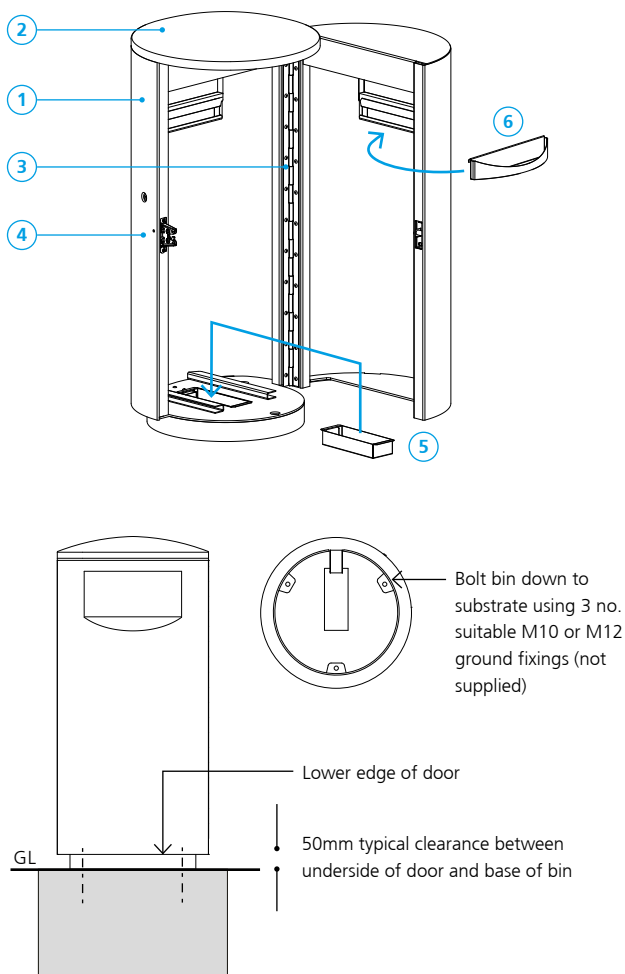
- Cigarette stubber & separate ash waste liner
- Various graphic options
- Bird-proof flaps



## ZENITH® LITTER BIN RANGE

### Surface-mounted litter bins

The solid base version of this Zenith litter bin is best suited to installation on truly level ground and offers the benefit of inclusion of a rodent bait tray as standard. Where the ground is sloping, the pedestal-mounted version is the better solution, as it is installed to a below ground foundation pad which allows for the bin to be installed upright, so that the door opens in a horizontal plane. Shown and described here are some of the standard features of the surface-mounted Zenith litter bins.



### STANDARD FEATURES / SPECIFICATION:

- 1 BODY & DOOR PANELS**  
Rolled 2mm thick steel or stainless steel plate with edge folds and welded reinforcement to ensure these components offer maximum resistance to deformation.
- 2 LID**  
The lid is a spun steel component with the domed profile that discourages people from leaving litter on top of the bin. Reinforced with internal stiffeners and fully welded to the body panels.
- 3 DOOR HINGE**  
The door is supported by a full height continuous stainless steel piano hinge riveted to the body and door panels and a steel restraint bar ensures the door cannot be over-opened.
- 4 LOCK**  
A positive engagement slam-lock ensures the door will stay firmly closed. All locking components are bolted into the frame and door to allow easy removal and replacement in the event of wear over time.
- LINER (not shown)**  
Liners are supplied in a powder coated zintec material as standard, complete with lifting handles. As an alternative, we can offer single part rotationally moulded plastic liners on selected models, with cut-outs to act as handles. If plastic sacks are used inside the liners we would recommend a plastic liner as its smooth edges are less prone to snagging on sacks.
- 5 RODENT BAIT BASE**  
Litter bins inevitably attract rats and whilst not desirable it does offer the opportunity to lay bait that will help deal with this problem. A removable tray is located in the base of the bin, sitting underneath the main liner, into which bait can be placed.

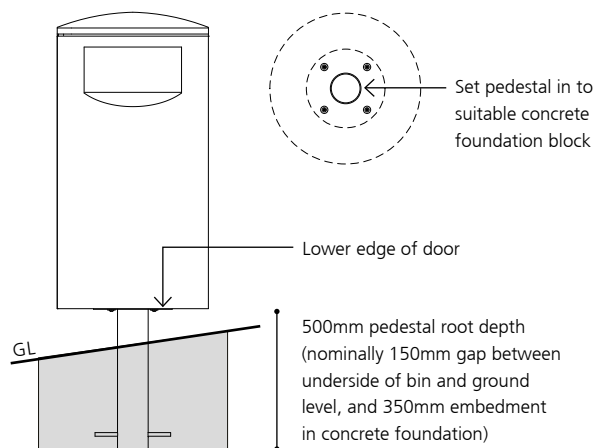
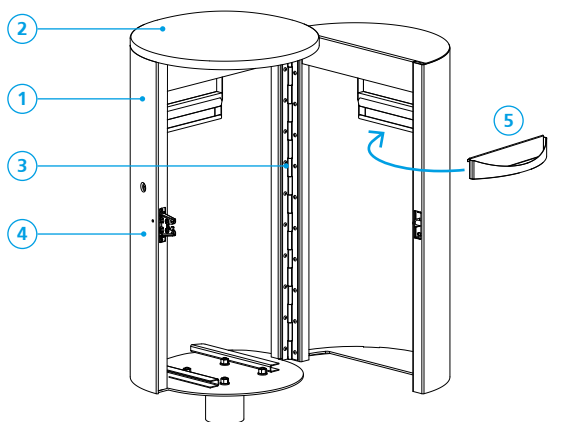
### OPTIONAL FEATURES:

- 6 STUBBER & ASH WASTE LINER**  
To encourage responsible disposal of cigarettes, a stainless steel stubber plate is an option on one or both sides of the frame. The hole in the plate allows butts to be dropped through into a separate steel ash waste liner, which is accessed when the bin door is opened and the main liner removed.
- LITTER & CORPORATE GRAPHICS (not shown)**  
Lettering to indicate the type of waste, tidyman or recycling logos or local authority / corporate graphics can be added to various parts of the bins, by vinyl application or stencil-type laser cut steel plates. Please let us know your requirement in order that we can advise on the options.
- BIRD-PROOF FLAPS (not shown)**  
Hinged and self-closing plates can be fitted over bin apertures to prevent birds such as pigeons and gulls from raiding the litter bin. Bird-proof flaps are generally supplied in a material and finish to match the rest of the bin.

## ZENITH® LITTER BIN RANGE

### Pedestal-mounted litter bins

Where the ground onto which the litter bin is to be installed is not level, we recommend using the pedestal-mounted versions of the Zenith litter bin. The pedestal should be firmly secured in a suitable concrete foundation block, ensuring that there is adequate clearance (recommended 25mm minimum) above the ground at its highest point to allow free passage of the door. Extra-long pedestals can be supplied if necessary, or with a base plate for bolting to a below ground level foundation.



### STANDARD FEATURES / SPECIFICATION:

- ① **BODY & DOOR PANELS**  
Rolled 2mm thick steel or stainless steel plate with edge folds and welded reinforcement to ensure these components offer maximum resistance to deformation.
  - ② **LID**  
The lid is a spun steel component with the domed profile that discourages people from leaving litter on top of the bin. Reinforced with internal stiffeners and fully welded to the body panels.
  - ③ **DOOR HINGE**  
The door is supported by a full height continuous stainless steel piano hinge riveted to the body and door panels and a steel restraint bar ensures the door cannot be over-opened.
  - ④ **LOCK**  
A positive engagement slam-lock ensures the door will stay firmly closed. All locking components are bolted into the frame and door to allow easy removal and replacement in the event of wear over time.
- LINER** (not shown)  
Liners are supplied in a powder coated zintec material as standard, complete with lifting handles. As an alternative, we can offer single part rotationally moulded plastic liners on selected models, with cut-outs to act as handles. If plastic sacks are used inside the liners we would recommend a plastic liner as its smooth edges are less prone to snagging on sacks.

### OPTIONAL FEATURES:

- ⑤ **STUBBER & ASH WASTE LINER**  
To encourage responsible disposal of cigarettes, a stainless steel stubber plate is an option on one or both sides of the frame. The hole in the plate allows butts to be dropped through into a separate steel ash waste liner, which is accessed when the bin door is opened and the main liner removed.
- LITTER & CORPORATE GRAPHICS** (not shown)  
Lettering to indicate the type of waste, tidyman or recycling logos or local authority / corporate graphics can be added to various parts of the bins, by vinyl application or stencil-type laser cut steel plates. Please let us know your requirement in order that we can advise on the options.
- BIRD-PROOF FLAPS** (not shown)  
Hinged and self-closing plates can be fitted over bin apertures to prevent birds such as pigeons and gulls from raiding the litter bin. Bird-proof flaps are generally supplied in a material and finish to match the rest of the bin.



ZENITH® LITTER BIN RANGE

Example standard stainless steel options

Shown here is a variety of standard products, all in stainless steel but with different finishes and features, demonstrating the wide choice of styles and features offered by the Zenith range of stainless steel litter bins. Stainless steel bins are available in grade 304, which suits most sites, and the higher grade 316 for more demanding environments, such as coastal locations or industrial areas. Our sales team would be happy to discuss these and any other features of the Zenith range with you to ensure that you select the most appropriate product for your site.

**Model:** ZEN555S4  
**Size:** Ø375mm  
**Installation:** Surface-mounted  
**Material:** Stainless steel G304  
**Finish:** Satin polished  
**Features:** -

**Model:** ZEN500S4  
**Size:** Ø500mm  
**Installation:** Surface-mounted  
**Material:** Stainless steel G304  
**Finish:** Satin polished  
**Features:** -

**Model:** ZEN500S4 ASH  
**Size:** Ø500mm  
**Installation:** Surface-mounted  
**Material:** Stainless steel G304  
**Finish:** Satin polished  
**Features:** Ash waste

**Model:** ZEN580S4ASH  
**Size:** Ø500mm  
**Installation:** Pedestal below ground fixed  
**Material:** Stainless steel G304  
**Finish:** Satin polished  
**Features:** Ash waste



## ZENITH® LITTER BIN RANGE

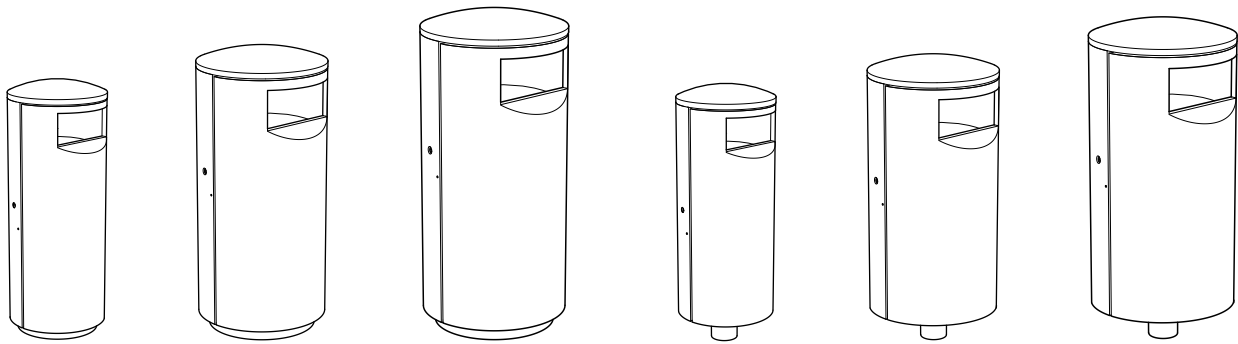
**Model:** ZEN500B4ASH  
**Size:** Ø500mm  
**Installation:** Surface-mounted  
**Material:** Stainless steel G304  
**Finish:** Bright polished  
**Features:** Ash waste

**Model:** ZEN500S4ASHPERF  
**Size:** Ø500mm  
**Installation:** Surface-mounted  
**Material:** Stainless steel, perforated  
**Finish:** Satin polished  
**Features:** Ash waste



**Model:** ZEN 580 ASH  
**Size:** Ø500mm  
**Installation:** Pedestal below ground fixed  
**Material:** Stainless steel  
**Finish:** Satin polished  
**Features:** Ash waste + lettering

## ZENITH® LITTER BIN RANGE



### ZENITH BOLT-DOWN FOR SURFACE MOUNTING

#### GENERAL SPECIFICATION:

Zintec steel construction for bolt-down installation, polyester powder coated finish to any RAL colour  
Complete with rodent bait tray as standard  
Zintec steel liner

#### **ZEN555**

Ø375mm x 980mm high

Liner capacity 45 litres

#### **ZEN500**

Ø500mm x 1100mm high

Liner capacity 90 litres

#### **ZEN520**

Ø540mm x 1240mm high

Liner capacity 125 litres

OPTIONS - SEE FOLLOWING PAGE

### ZENITH PEDESTAL FOR IN-GROUND INSTALLATION

#### GENERAL SPECIFICATION:

Zintec steel construction for in-ground installation, polyester powder coated finish to any RAL colour  
Steel liner

#### **ZEN560**

Ø375mm x 980mm high a/g x 350mm b/g

Liner capacity 40 litres

#### **ZEN580**

Ø500mm x 1100mm high a/g x 350mm b/g

Liner capacity 80 litres

#### **ZEN510**

Ø540mm x 1240mm high a/g x 350mm b/g

Liner capacity 115 litres

OPTIONS - SEE FOLLOWING PAGE





## ZENITH® LITTER BIN RANGE

### OPTIONS (ALL MODELS):

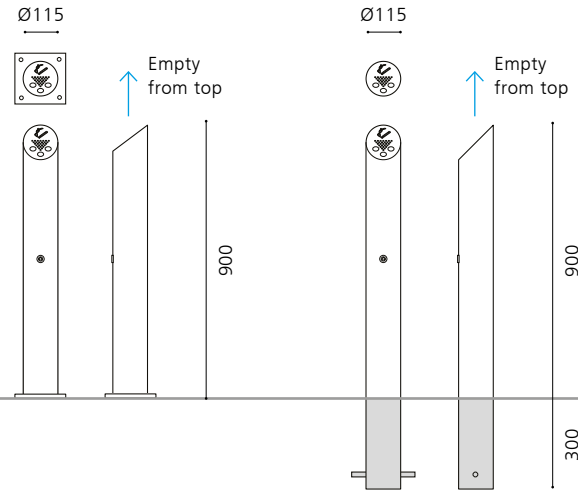
- Stainless steel construction in grades 304 or 316, in satin or bright polished finish
- Perforated body and door panels
- Plastic liner (ZEN 500 & ZEN 580 only)
- Integral stubbers & ash waste liners
- Graphics in vinyl or laser cut steel or stainless steel plate
- Hinged and self-closing bird-proof flaps over bin apertures
- Bin contents description in laser cut-outs on door & / or body
- Corporate branding as cut-outs, add-on plates or printed vinyls



## ZENITH® CIGARETTE BIN RANGE

### Ground-fixed cigarette bins

Zenith cigarette ash waste bins are based on the design of the Zenith bollard, enabling coordinated products to be used within a scheme. Ground-fixed bins are available as a bolt-down version or with an extended root for in-ground fixing. The standard specification grade 304 stainless steel in a satin polished finish resists burning or discolouring and can be readily cleaned by a simple washdown. The large capacity 2.5 litre liner is ideal for busy locations outside office buildings and pubs, thereby minimising the emptying regime.



### Operation

The liner is held in place by a push-lock on the front face of the bin, operated with a simple tri-key. When unlocked, the ash waste liner is removed out of the top of the bollard and the contents emptied. The liner is re-inserted and secured when the lock is pushed inwards.



### ZENITH ASH WASTE GROUND-MOUNTED

G304 stainless steel construction, satin polished finish  
Liner capacity 2.5 litres

#### ZEN210

Base plated version for  
bolt-down installation

#### ZEN215

Rooted version for  
in-ground installation

#### OPTIONS:

- G316 stainless steel
- Polyester powder coated finish body section to any RAL colour reference

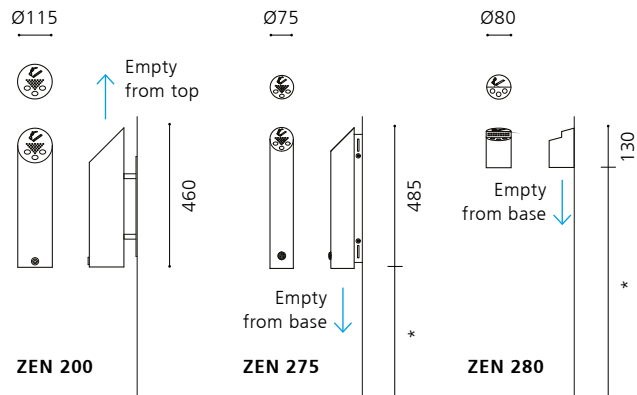


## ZENITH® CIGARETTE BIN RANGE

### Wall / post-mounted cigarette bins

Where land ownership presents issues with using ground-fixed ash waste bins, or where there simply isn't sufficient space on the pavement, wall-mounted versions are a viable alternative for most sites. All three models from the range can be attached to a wall, whilst the ZEN 275 and ZEN 285 can also be fixed to posts using traditional sign banding fixing methods. Fixing to existing posts around a site, which may primarily serve signage purposes, makes for a less disruptive and cheaper installation.

\* Allow sufficient space between underside of bin and ground level (or any other obstruction) for placement of a container to collect the bin contents.



### Fitting

Wall-mounted bins are supplied with an integral rear bracket with holes for wall fixings (not supplied). Post-mounted bins contain a pair of rear slots for insertion of standard banding to allow fitting to an existing steel post. For a secure fastening we recommend using 16mm stainless steel banding and turnbuckles (not supplied).

### Operation

To empty ZEN 200 bins unlock and lift the liner out. For ZEN 275 & 280 bins, hold a container beneath the bin to collect the contents, which will empty when the base plate is released. For ZEN 275 the base plate is retained by a push lock and for ZEN 280 it is keyless, and sprung-loaded, so returns to its closed position when released.



### ZENITH ASH WASTE WALL / POST-MOUNTED

G304 stainless steel construction,  
satin polished finish

#### ZEN200

Capacity 2.5 litres  
(suitable for wall  
mounting only)

#### OPTIONS:

- G316 stainless steel
- Polyester powder coated finish body to any RAL colour

#### ZEN275

Capacity 1.7 litres  
(suitable for wall or  
post mounting; light  
duty wall fixings only  
are included)

### ZENITH ASH WASTE MINI

Steel construction,  
zinc coated grey finish

#### ZEN280

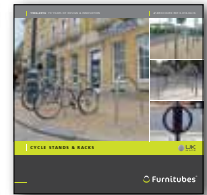
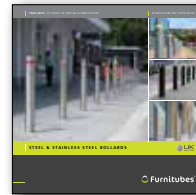
Capacity 0.3 litres  
(suitable for wall or  
post mounting)



## OTHER ZENITH® RANGE PRODUCTS

### Coordinated Zenith range of products

Zenith seats were the first products in this popular range. Since its introduction over 10 years ago, we have been regularly adding new products to the wider range which now includes bollards, cycle stands and signage, as well as litter bins and seating. Using coordinated products from the same range gives a consistency of style and material across an entire scheme. Although stainless steel is the most popular choice of material on many of the products, most are also now available in galvanised steel and polyester powder coated finishes.



To find the full range of products in the Zenith family use the search facility on our website, or alternatively view or download product-specific e-brochures at the following link:

<http://www.furnitubes.com/brochures>





## OTHER ZENITH® RANGE PRODUCTS





## ZENITH LITTER BINS & CIGARETTE BINS



View or download other product e-brochures at the following link:  
**[www.furnitubes.com/brochures](http://www.furnitubes.com/brochures)**



© Furnitubes

 **Furnitubes®**

3rd Floor, Meridian House, Royal Hill, Greenwich

**LONDON SE10 8RD**

**T: +44 (0)20 8378 3200**

[sales@furnitubes.com](mailto:sales@furnitubes.com)

[www.furnitubes.com](http://www.furnitubes.com)