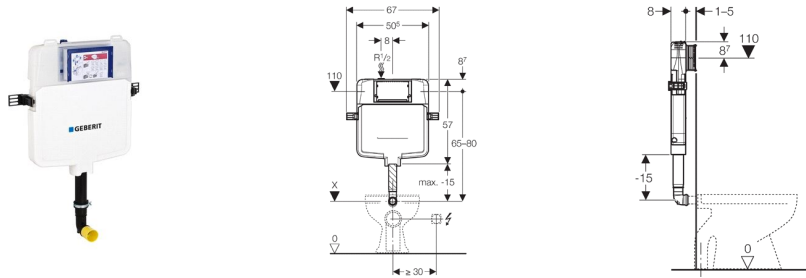


Geberit Sigma concealed cistern 8 cm, H108



Application purpose

- For back to wall floor-standing WCs
- For concealed installation

Characteristics

- Concealed cistern fully insulated against condensation
- Front actuation only
- Protection cover for service opening can be mounted without tools and cut to length
- Universal water supply connection compatible with MeplaFix, can be mounted and operated without tools
- Connection hose to angle stop valve can be screwed without tools
- Dual flush with Sigma80 touchless, Sigma60, Sigma50, Sigma20, Sigma10 touchless, Sigma01 or Bolero flush plates
- Single flush with Sigma10 or Tango flush plates
- Adjustable flushing volume
- Water supply connection at the top, offset to the left side
- Flush bend adjustable, 2 cm upwards and 1 cm downwards inside cistern housing
- The cistern can be operated with used water (rainwater) provided it is passed through a filter system first
- Not compatible with pneumatic or mechanical buttons
- Installation height 1080 mm (can be cut down, depending on the WC pan performance)

Technical data

Flow pressure range	0.1-10 bar
Operating temperature water max.	25 °C
Flush volume factory setting	5.8 and 3 l
Flush volume small	3 l

Scope of delivery

- Water supply connection R 1/2" male BSP parallel thread with integrated angle stop valve and hand wheel
- Flush bend
- Protection housing for service opening
- Fastening material
- Protection plug for flush bend

Excluded:

- Flush plate

Article

Article no.	PU1	PU4
109.772.00.1	1	32