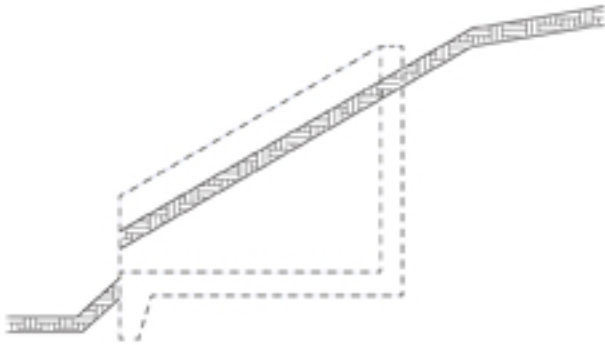


T: 01603 913025 | E: sales@althon.co.uk

## ALTHON H3 HEADWALL INSTALLATION

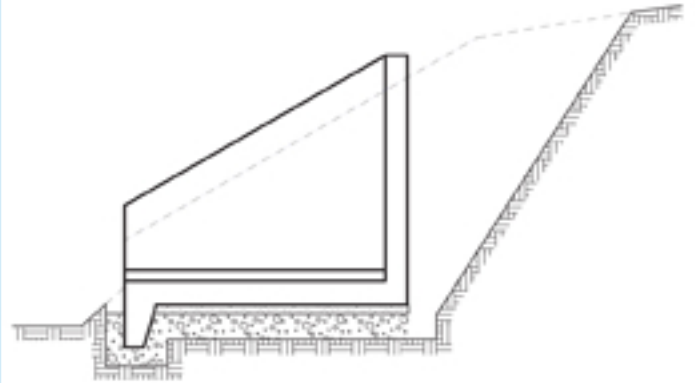
### BANK PROFILE



#### 1. Bank Profile

Ensure no part of the headwall protrudes into the watercourse and that the wing wall profile matches the bank profile as closely as possible.

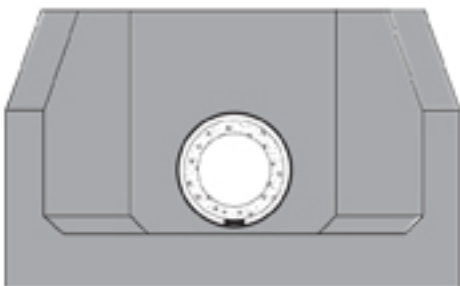
### EXCAVATE & INSTALL HEADWALL



#### 2. Excavate & install Headwall

Excavate to firm, undisturbed soil free of vegetation. Excavate bank to safe slope behind headwall. Excavate locally for the toe approximately 50mm below required depth. Line base of excavation and toe area with geotextile. Lay a minimum of 150mm selected, uniformly graded, granular fill on the base and compact well, then a 50mm blinding layer of sand. Line toe area with selected, uniformly graded, granular fill and compact well. Lift headwall into position and level or have a slight fall towards the toe. Once in its final position place selected, uniformly graded, granular fill around the toe and compact well.

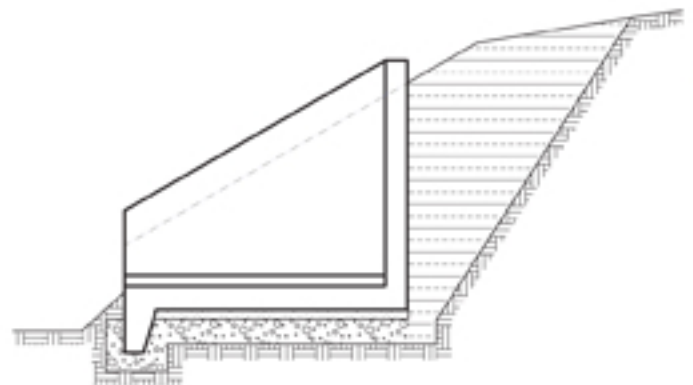
### INSTALL PIPE



#### 3. Install Pipe

Ensure no part of the headwall protrudes into the watercourse and that the wing wall profile matches the bank profile as closely as possible.

### BACKFILL & REINSTATE



#### 4. Backfill & Reinstatement

Backfill pipe section first then backfill all around headwall with as dug material. Make good at front of toe with as dug material ensuring river bank is returned to its original profile. It may be necessary to provide protection in front of the toe, please refer to engineer's recommendation.