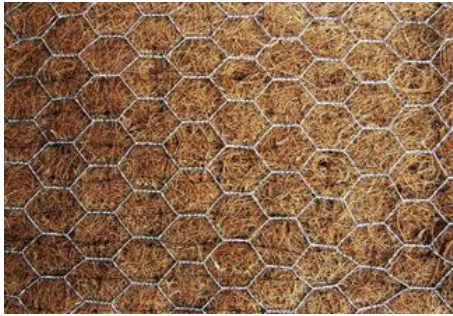


Greenfix Rockmat Type 6D Wire Reinforced Erosion Control Mat



Rockmat combines the benefits of Eromat with additional steel reinforcement for long term protection to vulnerable slopes. These mats require under seeding for fast vegetation establishment. Specially designed for inherently stable freshly-soiled embankments Rockmat is a quilted straw/coir and coir fibre mats for separate seeding or planting. Rockmat provides a highly effective anti-vermin protection layer. Designed for areas where rabbits and foxes etc. are likely to create slope instability due to burrowing.

Material type	Specification	Dimensions (m)	Area (m ²)	Weight per roll (kg)
TYPE 6D Rockmat Special	Type 6S stitched together with a galvanized wire mesh acc. To DIN1200, mesh-width 25 mm, wire dia. 0.8 mm	1.20 x 25	30	25

Fibre	Coir
Fibre Content (%)	100%
Fibre Characteristics	Untreated, natural
Tensile Strength EN ISO-10319	89.5 kg-force per 25 cm
Weight/Total (g/m²)	~800 g/m ²
Weight/Fibre (g/m²)	+/- 450
Blanket Thickness	8-10 mm
Functional Longevity F³-FIBRE	24-36 months
Functional Longevity WIRE MESH	Approx. 12-15 years
Slope Recommendation	Up to 70 degrees
Wire Mesh Type	Acc. to DIN 1200 -0.8 mm wire
Size	25 x 25 mm, hexagon
Weight	350 g/m ²
Galvanized Coating	+/- 0.075 mm
Break Resistance	350-500 N/mm ²
Bottom Netting Type	Light - Polypropylene
Bottom Netting Mesh Size	6 x 6 mm
Bottom Netting Weight	4.8 g/m ²
Inner Netting Type	Medium - Polypropylene
Inner Netting Mesh Size	19 x 36 mm
Inner Netting Weight	7.1 g/m ²
Stitching Thread	Polypropylene thread (brown), UV-stable
Stitching Thread Tensile Strength	6.5 cN/dtex