

A GUIDE TO SECURITY RATINGS: PERIMETER STANDARDS EXPLAINED

Ranging from SR1 to SR5, Security Ratings are essential to consider when specifying or installing perimeter security to meet a specific performance requirement. Security Ratings represent the resistance of a perimeter fencing system and are only awarded to products from ISO 9001-accredited businesses after rigorous independent testing by the LPCB.

For specifiers of security fencing, SR certified fencing systems offer peace of mind and complete confidence in the product being considered.

This guide offers an overview of the importance of LPS 1175 Security Ratings and how they are applied, detailing the criteria for each rating and providing examples of Jacksons Fencing products certified to each SR category.



Security Ratings: Who decides?

BRE Global is an international authority on security certifications which assesses and awards SR ratings in coordination with manufacturers and insurers. BRE Global's Loss Prevention Certification Board (LPCB) tests and certifies security products, using the Loss Prevention Standard 1175 (LPS 1175) certification to inform specifiers, architects and installers of the varying strength levels in security systems.

The 5 D's of Perimeter Security

Establishing a robust perimeter requires a comprehensive strategy. The 5 D's of perimeter security, listed below, work on the 'onion skin' principle; multiple layers of security working together to protect a site's assets and offer the time and intelligence you need to respond swiftly and effectively.

DETER

Applying visual deterrents, such as fencing, security toppings, lighting and signs, can discourage intruders before they attempt to breach your site.

DETECT

The ability to detect trespassers by human observation and/or electronic surveillance provides the intelligence to support an appropriate security response.

DEFEND

The final security measure usually involves your security team or the police apprehending the intruder.

DELAY

A range of delaying methods can offer valuable time to deal with a security breach; road blockers fencing around assets, gates and turnstiles, interior doors with access control, all slow down an intruder.

DENY

Access control solutions, such as manned security gates or swipe card systems, allow you to manage and monitor who enters and leaves your premises and where they can access while inside.

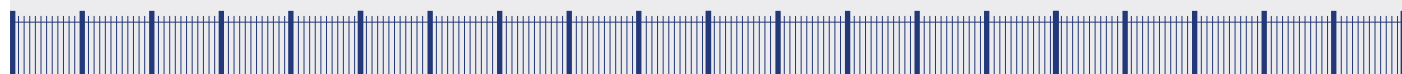
How are Security Ratings Awarded?

Perimeter fencing is currently rated in 5 levels of increasing security, with SR1 representing the most basic and SR5 the most highly secure (the LPS 1175 standard actually has a 1-8 Security Rating Classification, but 5 is the highest achieved by a perimeter fencing system). When awarding a Security Rating, the LPCB puts a security system through meticulous testing; testing fencing as a security barrier,

for example, takes the form of simulated attacks with the intention of breaching the fence through its fabric.






To assess security, there are two continuous adjustments made during these tests: the duration of the attack and the type of tool used, the increasing severity of which contribute to the Security Rating awarded.

Jacksons Fencing is the only company in the UK to offer a single-layer fence system rated to LPS 1175 SR5, the highest current security rating for a fencing system.



Tools, Times and Categories

The table below shows the Security Ratings and explains the resistance levels of ratings 1 to 5 to simulated attacks of varying durations with a range of tools. An equivalent Jacksons Fencing product is given to illustrate how we meet each Security Rating.

	 SR1	 SR2	 SR3	 SR4	 SR5
Tool Category	A	B	C	D	D+
Tools Included	<ul style="list-style-type: none"> • Cable cutter • Pliers • Screwdriver • Spanners • Knife 	<ul style="list-style-type: none"> • Bolt cutter • Claw hammer • Hand drill • Pipe wrench <i>Cat. A tools</i>	<ul style="list-style-type: none"> • Axe • Crowbar • Gas torch • Hacksaw <i>Cat. A, B tools</i>	<ul style="list-style-type: none"> • Disc grinder • Fire axe • Jigsaw • Sledgehammer <i>Cat. A, B, C tools</i>	<ul style="list-style-type: none"> • Circular saw • Reciprocating saw <i>Cat. A, B, C, D tools</i>
Maximum Working Time (mins)	1	3	5	10	10
Maximum Test Duration (mins)	10	15	20	30	30
Description	An opportunist attack by bodily physical force and stealth	A more determined opportunist attack	Deliberate forced entry of protected premises	Experienced attempt at forced entry with higher-level tools	A serious attempt at forced entry with top-end tools
Jacksons Solution	Barbican SR1 Series Vertical Bar Railings Euroguard Platform SR1 Mesh Euroguard Combi SR1 Steel/Timber combination	Securi-Mesh Plus SR2 Steel Mesh System	Jakoustic Class 3 Timber Acoustic Security Fence UHS Heavy/Extreme	Trident 4 Vertical Railing & Mesh Combination	Trident 5 Vertical Railing & Mesh Combination

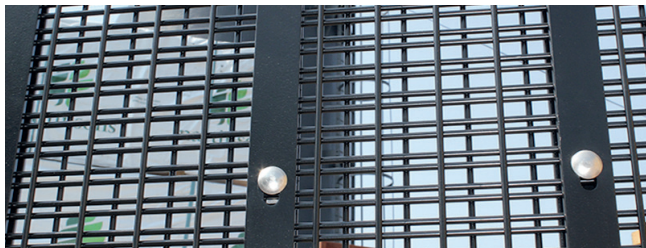
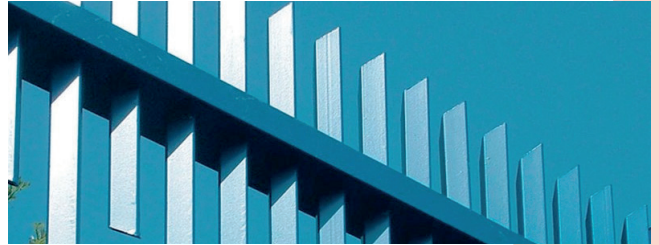
Implications for Product Design

LPS 1175-certified fencing should be specified and installed after assessing a site to ensure the solution is appropriate to the risks of the project. From the fencing itself to features that offer additional protection, there isn't a one-size-fits-all solution to perimeter security; the best security fencing solutions are designed to suit a site's specific needs and challenges.

Additional security features that can strengthen a site's perimeter security include:

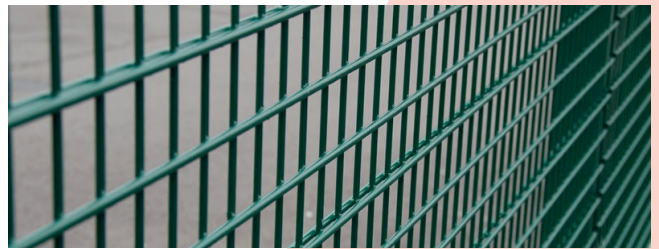
Anti-scale

Security fencing cannot do its job if it is easily scalable; to prevent easy access to a site over the top of a barrier, features such as barbed wire, razor tape and broken glass are off-putting and pose a physical threat to intruders, while rotating/spinning toppings and a specific aperture to eliminate fingerholds or footholds.



Double skinning

Designing fencing with two layers of mesh, or 'double skinning', creates an extra layer that must be cut through to breach the fencing. This impedes an intruder's progress and, if attacked, may raise the alarm due to noise made by destructive tools. This form of fencing design also prevents objects from being passed through the fencing due to its small apertures.



Welded mesh

Using narrow steel wiring reduces the ability of potential intruders to grip the fence by eliminating any potential hand or footholds. The small gaps between the mesh make it much harder for anything inside the perimeter to get out, whilst galvanised welded mesh (mesh coated in zinc or zinc alloy) is more resistant to both corrosion and attack.

Why Jacksons?

- ✓ Certified security solutions SR 1-5
- ✓ Expert knowledge from our dedicated team
- ✓ Unique 25-year guarantee
- ✓ Quality installation by experts
- ✓ Manufactured in the UK to the highest standards
- ✓ Bespoke solutions based on a thorough assessment of your site

Find out how Jacksons Fencing's security experts can support your project by contacting us on:

0800 408 2611

www.jacksons-security.co.uk/SR
security@jacksons-fencing.co.uk



Jacksons Fencing