

Large Floor Standing Planters

Big eye catching displays ideal for shopping precincts, pedestrian walkways, outdoor cafés and other open spaces. Used on their own or with tiered combinations, you can create abundant displays of colour.



Barrel Planter

The Amberol Self-watering Barrel is natural looking with authentic finish and looks perfect outside grand civic buildings, in busy public spaces, and on the village green. The barrel is splinter free and safe, it doesn't rot and fall apart, nor does it lose it's colour, rust or leave a mess.

Product Code	Diameter mm	Depth mm	Compost (litres)	Water (litres)	Total Weight* (kg)
BRL-OP	630	450	100	21	121

The inbuilt reservoir has a capacity of 21 litres



Cup and Saucer Planter

This large circular floor standing planter with gentle curves and contemporary styling is ideal for use where people gather. They can be located as single units, or arranged in groups of stunning colour

Product Code	Diameter mm	Depth mm	Compost (litres)	Water (litres)	Total Weight* (kg)
CFS-OP	1000	600	250	65	315



CREST

Octagonal Planter

A deep classically shaped floor standing planter ideal for shrubs and larger displays in wide open spaces.

Product Code	Length mm	Width mm	Depth mm	Compost (litres)	Water (litres)	Total Weight* (kg)
OCT-OP	1200	1200	750	250	196	446



Big Flower Pot Planter

A circular floor standing planter ideal for shopping precincts and pedestrian walkways. Simple and uncomplicated, this timeless unit can be used almost anywhere.

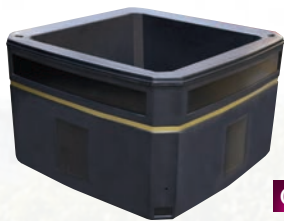
Product Code	Diameter mm	Depth mm	Compost (litres)	Water (litres)	Total Weight* (kg)
BFP-OP	800	520	200	35	235



Oval Planter

As the name suggests, adds curve and contrast to your kerb appeal. Ideal lined up nose to tail, these floor standing units can be used to edge pavements or direct pedestrian flows. Inner liners are available separately for off-site planting up.

Product Code	Length mm	Width mm	Depth mm	Compost (litres)	Water (litres)	Total Weight* (kg)
OVL-OP	1200	820	600	375	100	475



CREST

Metre Square Planter
Excellent for centre piece displays in large open spaces. For use indoors and out, this large square floor standing planter with branding panels and smart recessed banding can be used to enhance corporate or local identity.

Product Code	Length mm	Width mm	Depth mm	Compost (litres)	Water (litres)	Total Weight* (kg)
MSP-OP	1040	1040	750	245	202	447



CREST

Promenade Planter
Traditional and rectangular in appearance, this floor standing unit can be used to create informal boundaries along pavements, between roadways or to enhance street corners.

Product Code	Length mm	Width mm	Depth mm	Compost (litres)	Water (litres)	Total Weight* (kg)
PRM-OP	1500	500	750	308	60	368



CREST

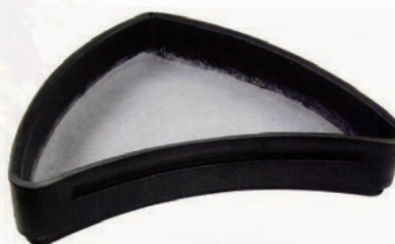
Giant Precinct Planter
A giant circular floor standing planter for huge floral displays, for something really special! Inner liners are available separately for off-site planting up.

Product Code	Diameter mm	Depth mm	Compost (litres)	Water (litres)	Total Weight* (kg)
GPP-OP	1500	1000	710	250	960



Quarto Planters
Large curved floor standing units that can be used singly in a quiet corner, in a semi-circle against a wall, or as a weaving chicane. Or put four together to form a large circular display! Ideal for shopping concourses or big open office spaces, for use indoors and out.

Product Code	Length mm	Width mm	Depth mm	Compost (litres)	Water (litres)	Total Weight* (kg)
QRT-OP	950	370	400	75	26	101



Petal Planters
Tessellating petal shaped planters provide a low cost, high impact landscape solution to a variety of rural or urban settings. They are also ideally suited to schools and nurseries as they are easy for young children to reach and plant up

Product Code	Each side mm	Height mm	Compost (litres)	Water (litres)	Total Weight* (kg)
PP-OP	1250	250	145	45	190

CREST

Crests and wording plaques can be applied to moulded inset panels. Ideal for corporate branding. See centre spread.

* Total Weight quoted should be treated as indicative in normal conditions, which may vary with different weather and planting conditions. Capacities quoted are approximate and for guidance only.

Enquiry line
01773 830930

E-mail
sales@amberol.co.uk

Fax
01773 834191

Online
amberol.co.uk