

# ELIQUO | HYDROK

## CWF Storm Flush™



*Self regulating storm tank flushing technology*



# CWF Storm Flush

THE HYDROK CWF STORM FLUSH STORM TANK  
CLEANSING SYSTEM PROVIDES A COST EFFECTIVE  
SOLUTION FOR THE REMOVAL OF SEDIMENTATION  
BY THE USE OF AUTOMATIC, SELF REGULATED  
FLUSHING TECHNOLOGY.



## CWF 'FLUSHING BELL' SOLUTION

With increasing demands upon sewerage networks to attenuate and provide storage capacity for storm water flows, water companies are required to invest into new and existing storage systems. All such systems encourage the settlement of solids and sediments which can lead to operational problems and high maintenance costs.

The CWF Storm Flush system is a highly effective non-powered cleaning system for all storm water retention tanks utilising the sewage storm water for the flushing process thus requiring no additional fresh water.

The CWF Storm Flush technology may be utilised for new build or retrofit into existing structures. The flexibility of flushing bell arrangement provides a flushing solution for differing storm tank configurations including circular, rectangular and square storm tank constructions.



---

## ADVANTAGES AND BENEFITS

---

Cleans ecologically, without external power, without external water supply and without controls

Flushes even after partial fillings

Fully self priming and flushing operation

Suitable for new tank and existing tank retrofit

Suitable for both open and below ground installations

No moving parts

Intrinsically safe

Any shape tank

Utilises storm water for the flushing process

Retains total volume of storm tank

Final flush polishing stage utilizes settled storm water

Synchronised flushing of multi unit installations within larger tanks

---



---

## BEFORE FLUSHING

---



---

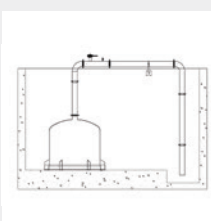
## AFTER FLUSHING

---



# Operating principle

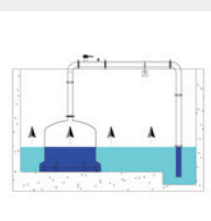
1



Storm tank empty

CWF Storm Flush empty

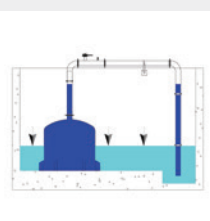
2



Storm tank fills

CWF Storm Flush fills venting via one way valve

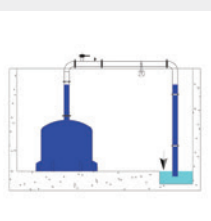
3



Storm tank empties

CWF Storm Flush maintains water column via closed vacuum break system

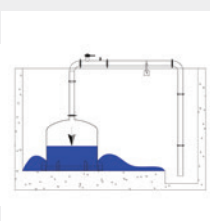
4



Sump drains

Vacuum break releases discharging water column (fully or partially, flushing regime dependant)

5



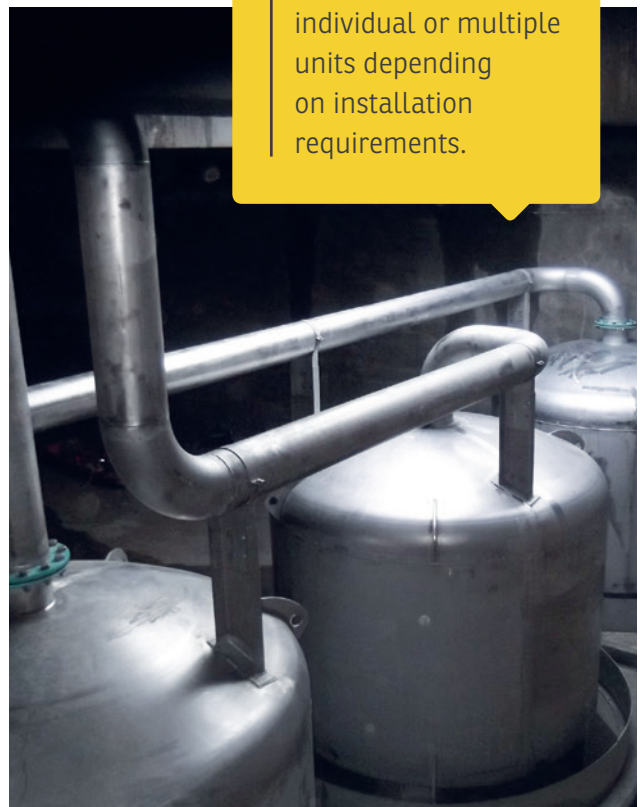
Storm tank floor is flushed via RFP flushing regime.


The Hydrok CWF Storm Flush™ – Patent applied for. GB1020686.0

The CWF Storm Flush is a simple method for sediment removal. Storm water is held in reserve in the storage reservoir, filled during the tank filling process. At the end of a storm event and after the system has emptied, the retained flushing water is released via the vacuum break within the flushing vessel. This creates a RFP (Roughing, Fine and Polishing) staged flushing regime which mixes and carries the sediment from the base of the tank to the receiving sump.

The simple and robust design of this flushing system provides a reliable solution to tank cleansing requirements challenges. The CWF Storm Flush is engineered in high quality stainless steel providing a long product life, has no moving parts within the storm tank, with all necessary valve arrangements are built into a control manifold located in a small manhole chamber at ground level.

Configured as individual or multiple units depending on installation requirements.





The CWF 'Flushing Bell', a non-mechanical,  
self regulating and automatic storm tank  
flushing system.

Version 001

**ELIQUO HYDROK LTD**

Indian Queens Ind Estate, St. Columb | Cornwall, England | TR9 6TL

**T +44 1726 861 900**

[sales@eliquohydrok.co.uk](mailto:sales@eliquohydrok.co.uk) | [www.eliquohydrok.co.uk](http://www.eliquohydrok.co.uk)

MEMBER OF **ELIQUO WATER GROUP**