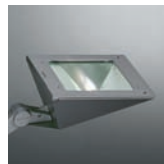
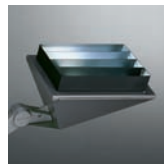


Halogen version



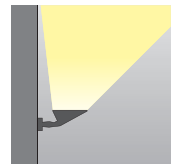
Discharge version



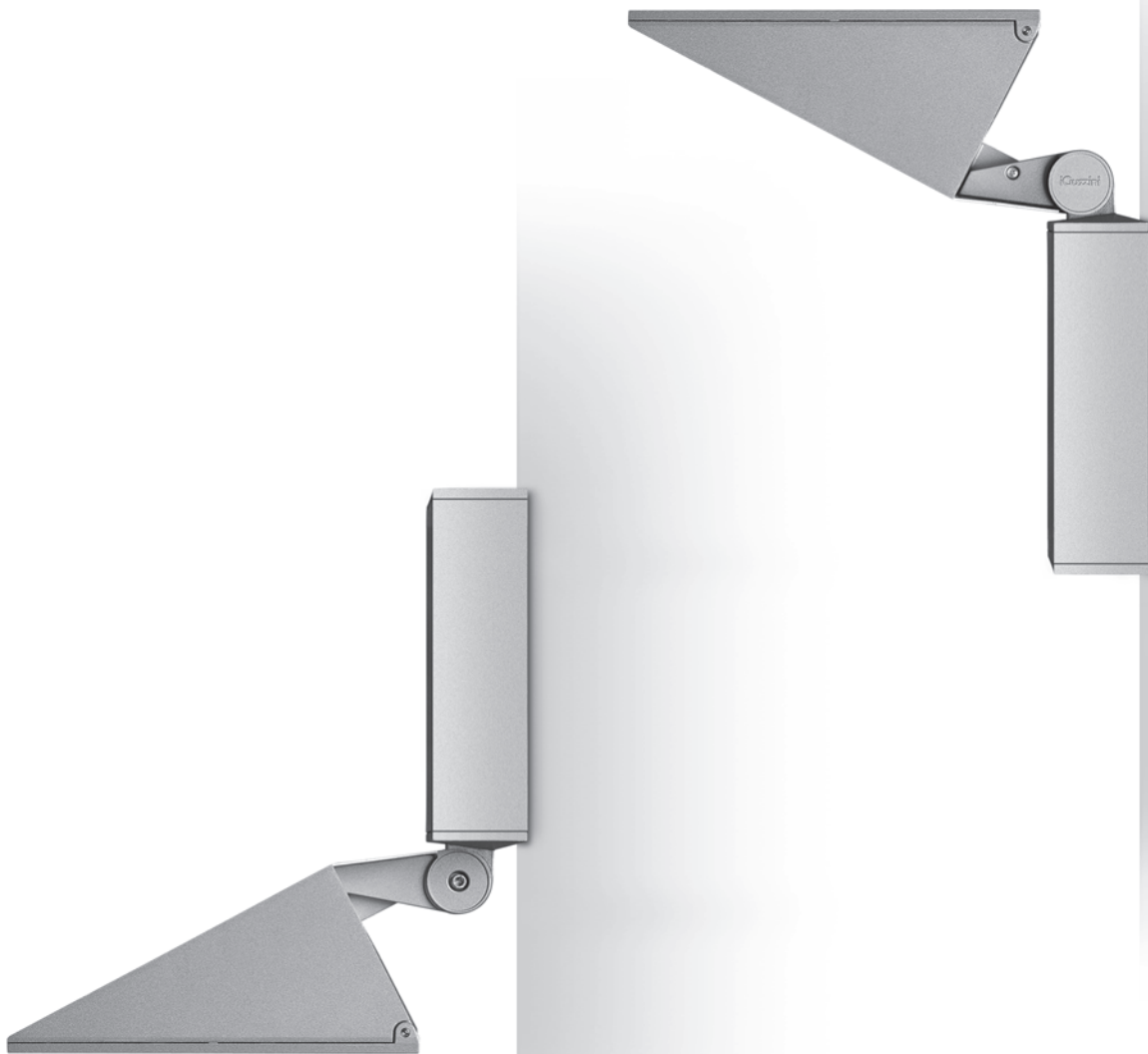
Comfort visivo



Coloured filters
and diffusing glass



Asymmetrical optic



A careful design process had the objective of studying each and every functional part. iTeka has a basic and clean design; it is elegant and graceful with minimal visual impact.

Can be installed as ceiling-mountings or wall-mountings. The orientation of the projector, combined with the

efficiency of the light emission, allows us to obtain flexibility and excellent performance in order to satisfy the lighting needs of commercial spaces, pedestrian areas, and pathways to places of worship, in harmony with the aesthetic spirit of the space where iTeka is installed.



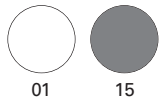
- Wall-mountings for use with halogen and discharge lamps
- Projector with base for wall-mounting made of die-cast aluminium (halogen model).
- Projector and joint structure made of die-cast aluminium alloy, wall-mounting base made of cut and moulded steel sheet, framework that houses the components made of extruded aluminium (discharge model).
- Asymmetrical reflector made of ultrapure aluminium
- Partially sanded sodium calcium transparent safety glass
- Frame is connected to the projector with a hinge aperture to facilitate maintenance operations .
- Adjustability of the projector body $+30/-10^\circ$ on the vertical axis.
- Also available: coloured filters or diffusing glass, which can be mounted via the extra frame accessory.
- Optional louvre screens, which can be used by themselves or with the extra frame accessory.
- Discharge versions have electronic control gear.
- The technical characteristics of the fitting comply with EN60598-1 standard.
- IP66/IP40
- F seal
- ENEC approval
- Class of Insulation I/II



Easy maintenance



Adjustable product with ability to mechanically block the aim



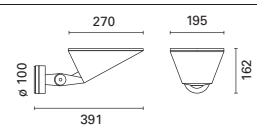
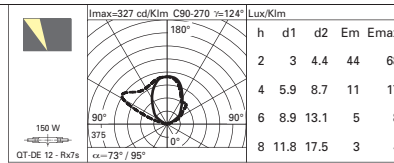
Registered Design



code lamp
Asymmetric lighting wall-mounted fitting
B787 150 W (75mm) QT-DE



Kg. 2,15

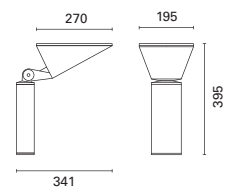
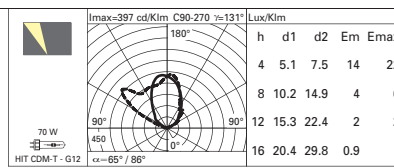


Asymmetric lighting wall-mounted fitting with electronic control gear

5006 70 W HIT (G12)
5007 150 W HIT (G12)



Kg. **5006** 3,10 **5007** 3,30



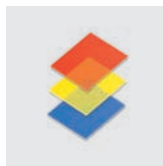
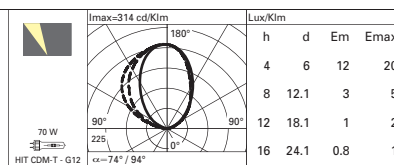
accessories



code
Diffusing glass, can be installed only with B996

B997

Available in colour 65



Coloured filters, can be installed only with B996

B996 for B787-5006

Available in colours 05-06-09



Transverse baffle
B995

Can also be installed with B996

Available in colour 04



Glass-holding frame
B996

Available in colour 15