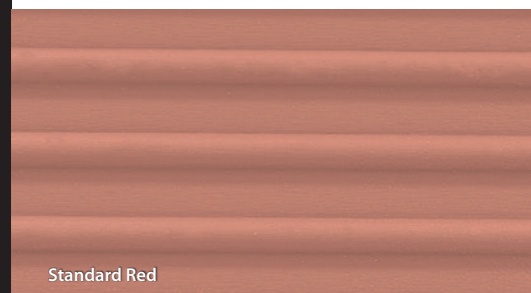
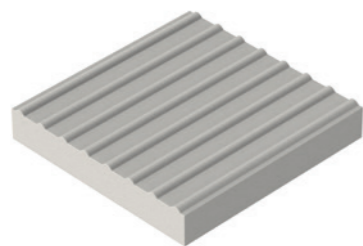


	Thickness (mm)	Plan Size (mm nom.)	Unit Weight (kg approx)	Pack Size (m <sup>2</sup> approx)	Pack Weight (kg approx)	Red Item Code	Buff Item Code	Natural Item Code
Standard	50	400 x 400	19	5.8	684	<b>FL6181550</b>	<b>FL6181050</b>	<b>FL6180550</b>
	50	450 x 450	23	8.1	920			<b>FL6180550</b>
Textured	50	400 x 400	19	5.8	684		FL6185050	FL6184550

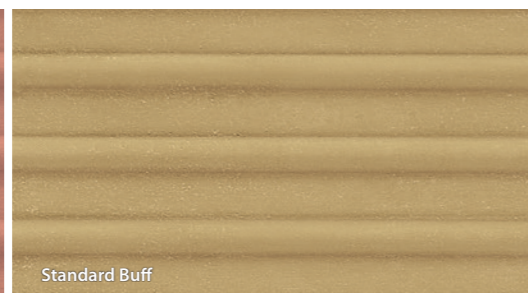
Hazard Warning with reference numbers indicated in **bold** black are available ex-stock.

Hazard Warning with reference numbers indicated in light black are manufactured to order. Contact our sales office to discuss your requirements.

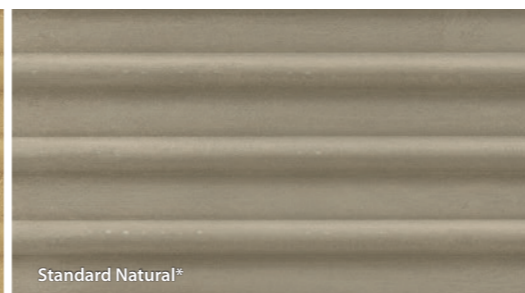
\*Natural products are manufactured from aggregates sourced locally to the works and contain no pigmentation, therefore colour variation between products from different works is possible.



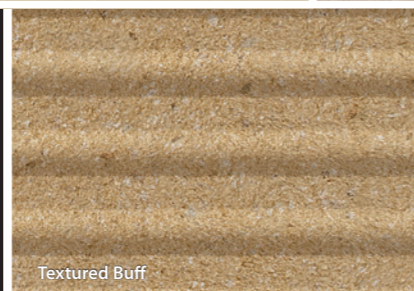
Standard Red



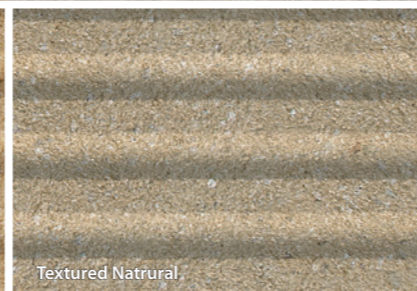
Standard Buff



Standard Natural\*



Textured Buff



Textured Natural

# Hazard Warning

## Concrete Tactile Paving

A DDA compliant unit to be installed near to potential hazards to warn visually impaired people to proceed with caution. Commonly known as "Corduroy Paving" because of the raised bars on the surface, these should be installed at level crossings, the intersections of shared cycle / pedestrian routes, and at the top and bottom of steps.

*This product is manufactured in accordance with BS EN 1339: 2003 (see scope) and guidelines from the Department for Transport. For further information visit [www.gov.uk](http://www.gov.uk), search "guidance on the use of tactile paving surfaces" or contact Marshalls technical support. At Marshalls, we continually strive to create better spaces to the benefit of everyone, by designing for all, we aim to take into consideration the needs of the disabled persons as set out in the The Disability Discrimination Act 2005.*

**See my related products...**

- Single Solid Concrete Step Unit Paving ..... pg 72
- Concrete Paver Step Treads and Risers Paving ..... pg 73
- Concrete Kerb Step Unit Kerb ..... pg 105

**n55Plus**

Q25 215  
Q25 225



CO<sub>2</sub> per m<sup>2</sup>

For the latest carbon value visit [www.marshalls.co.uk/commercial/carbon-calculator](http://www.marshalls.co.uk/commercial/carbon-calculator)



Hazard Warning, Natural, Mayflower Retail Park