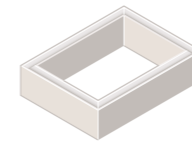




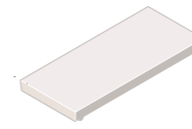
Household Inspection Chamber

**CHAMBER SECTION**  
A150



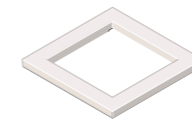
Marshalls Type	Type	Depth (mm)	Internal Length (mm)	Internal Width (mm)	Wall Thickness (mm)	Approx Weight (kg)	Pack Size (units)	Item Code
A150	A	150	600	450	50	44	16	DR620020
A225	A	225	600	450	50	58	10	DR620033
B150	B	150	750	600	60	67	16	DR620060
B225	B	225	750	600	60	100	10	DR620080
C150	C	150	1000	675	65	83	16	DR620090
D150	D	150	1200	750	75	115	8	DR620111
D225	D	225	1200	750	75	173	5	DR620126

**REDUCER AND CLOSER SLAB**  
BAR



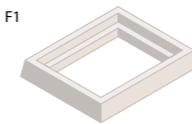
Marshalls Type	Type	Overall Size (mm)	Internal Dimensions Reduce from (mm)	Internal Dimensions Reduce to (mm)	Depth (mm)	Approx Weight (kg)	Pack Size (units)	Item Code
BAR	B to A Reducer	730 x 315	750 x 600	600 x 450	50	26	6	DR6300100
DBR	D to B Reducer	910 x 620	1200 x 750	750 x 600	75	97	6	DR6300400

**COVER SLAB**  
BCS



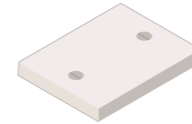
Marshalls Type	Type	Clear Opening (mm)	Length (mm)	Width (mm)	Thickness (mm)	Approx Weight (kg)	Pack Size (units)	Item Code
BSC	For B Section	605 x 605	870	870	70	55	1	DR635140
CCS	For C Section	605 x 455	1150	825	60	89	1	DR635150
DCS	For D Section	610 x 610	1366	916	90	150	1	DR635180
SDCS	For D Section	610 x 610	1380	930	150	300	1	DR635170

**FRAME**  
F1



Marshalls Type	Type	Length (mm)	Width (mm)	Thickness (mm)	Approx Weight (kg)	Pack Size (units)	Item Code
F1	Standard Frame	850	700	123	46	1	DR635010
F2	Standard Frame	865	865	138	80	1	DR635070

**COVER**  
HC1



Marshalls Type	Type	Clear Opening (mm)	Length (mm)	Width (mm)	Thickness (mm)	Approx Weight (kg)	Pack Size (units)	Item Code
HC1	Handhole	600 x 450	700	545	60	55	1	DR635100
KC1	Keyhole	600 x 450	700	545	60	55	1	DR635110
HC2	Handhole	600 x 600	695	695	75	93	1	DR630060
KC2	Keyhole	600 x 600	695	695	75	93	1	DR630070



Standard Grey

# Household Inspection Chambers



A range of 4 sizes of inspection chamber to suit specific site requirements comprising a complete system of interchangeable units.

Different depths of tongue and groove chamber sections allow you to build up easily and accurately to the appropriate depth to suit the location of the pipework.

Flexible internal chamber configurations are achieved using Reducer and Closer Units and one piece Cover Slabs.

Fitted Concrete Frames and removable Concrete Covers seal the Inspection Chamber.

System uses sulphate resistant cement Compliant to BS EN 1917:2002

**n55Plus**  
Q25 800  
Q10 190



For the latest carbon value visit  
[www.marshalls.co.uk/commercial/carbon-calculator](http://www.marshalls.co.uk/commercial/carbon-calculator)