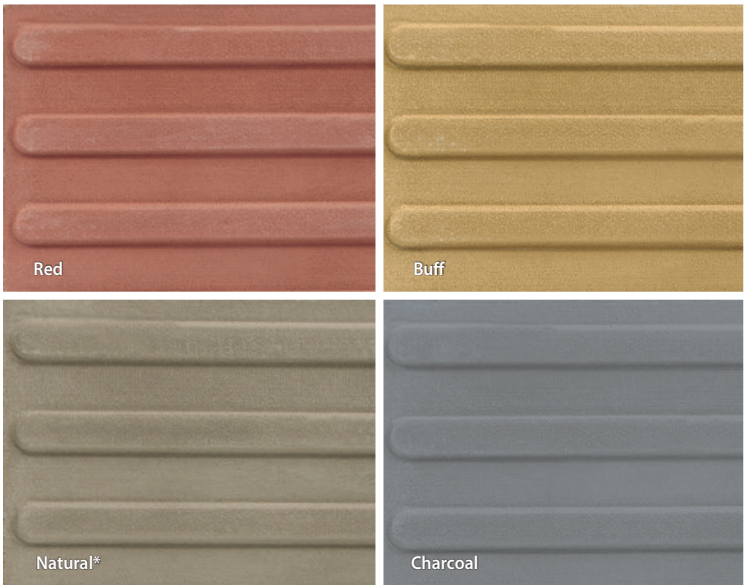
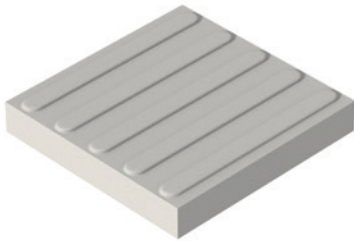




Thickness (mm)	Plan Size (mm nom.)	Unit Weight (kg approx)	Pack Size (m² approx)	Pack Weight (kg approx)	Red Item Code	Buff Item Code	Natural Item Code	Charcoal Item Code
50	400 x 400	19	5.8	684	FL6151550	FL6151050	FL6150550	FL6152550

Directional Guidance with reference numbers indicated in light black are manufactured to order. Contact our sales office to discuss your requirements.
*Natural products are manufactured from aggregates sourced locally to the works and contain no pigmentation, therefore colour variation between products from different works is possible.



Directional Guidance

Concrete Tactile Paving

Ideal for use in town squares, retail parks and plazas, these DDA compliant units are used to guide visually impaired pedestrians safely around open spaces. The raised profiles on the surface can be felt underfoot by blind people while the contrasting colours can be identified by the visually impaired.

This product is manufactured in accordance with BS EN 1339: 2003 (see scope) and guidelines from the Department for Transport. For further information visit www.gov.uk, search “guidance on the use of tactile paving surfaces” or contact Marshalls technical support. At Marshalls, we continually strive to create better spaces to the benefit of everyone, by designing for all, we aim to take into consideration the needs of the disabled persons as set out in the The Disability Discrimination Act 2005.

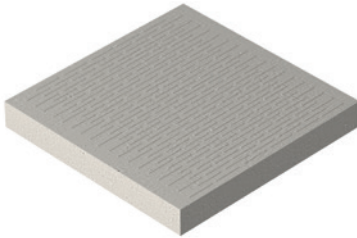
nbsPlus
Q25 31
Q25 320



For the latest carbon value visit
www.marshalls.co.uk/commercial/carbon-calculator



Thickness (mm)	Plan Size (mm nom.)	Unit Weight (kg approx)	Pack Size (m² approx)	Pack Weight (kg approx)	Natural Item Code
50	600 x 600	41	7.2	820	FL1250600
63	600 x 600	52	5.8	832	FL1520600
50	900 x 600	64	10.8	1280	FL1250500
63	900 x 600	78	8.7	1248	FL1520500



Barface paving with reference numbers indicated in **bold** black are available ex-stock.
Barface paving with reference numbers indicated in light black are manufactured to order. Contact our sales office to discuss your requirements.
*Natural products are manufactured from aggregates sourced locally to the works and contain no pigmentation, therefore colour variation between products from different works is possible.



Barface

Concrete Tactile Paving

All of the Marshalls paving range complies with strict BS slip/skid requirements – but for applications which demand even better grip characteristics, the raised profile of these units provides superior traction. Ideal for use on steep inclines or access ramps.

This product is manufactured in accordance with BS EN 1339: 2003 (see scope) and guidelines from the Department for Transport. For further information visit www.gov.uk, search “guidance on the use of tactile paving surfaces” or contact Marshalls technical support. At Marshalls, we continually strive to create better spaces to the benefit of everyone, by designing for all, we aim to take into consideration the needs of the disabled persons as set out in the The Disability Discrimination Act 2005.

nbsPlus
Q25 215
Q25 225



For the latest carbon value visit
www.marshalls.co.uk/commercial/carbon-calculator