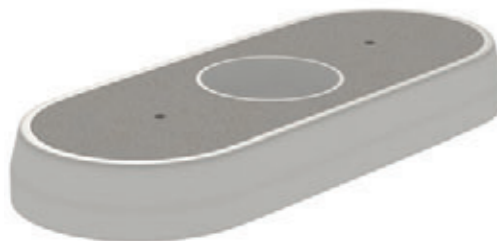


	Length (mm)	Width (mm)	Height (mm)	Weight (kg)	Conservation Silver Grey no aperture Item Code	Natural, no aperture, Exposed Texture Item Code
Satellite Islands	1500	610	170	670	TDSAT1000	TDSAT0000
Refuge Islands	1200	1200	260	581	TIMEA2660	TIMEA1200
	1500	1500	260	959	TIMEA2500	TIMEA1500
	1800	1800	260	1587	TIMEA2800	TIMEA1800
M16 Lifting Loops					RELIF0002	RELIF0002



Satellite Island
To be used in narrow roads with high traffic volume



Refuge Island
to be used in wide roads with high traffic volume

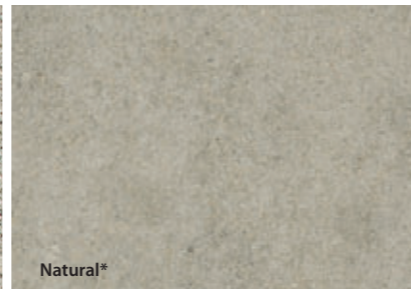


Traffic Islands

Permanent Islands



Conservation Silver Grey



Natural*

The Marshalls traffic islands comply with the Traffic Advisory Leaflets TAL 7/95, 7/93 and 11/94 as well as with the Highways Act 1980, the Traffic Calming Act 1992 and the Highways (Traffic Calming) Regulations 1993. They are also compliant with Local Transport Note LTN 01/07 and 01/08.

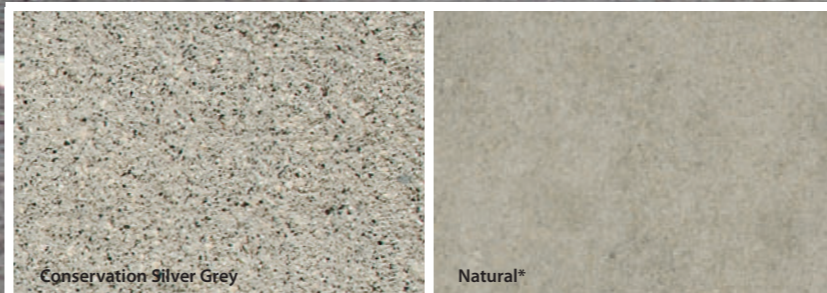
They come in two profiles: Satellite and Refuge. Both types can be either permanent (fixed in the ground) or demountable (can be disassembled and relocated). All traffic islands are pre-formed in factory controlled conditions, ensuring design accuracy and specification validity. Furthermore, bespoke traffic islands and delineations for cyclists are available for new upcoming cycle areas. Traffic installation kit included with instructions.

See my related products...

Blister Paving..... pg 75



Traffic Island, A58

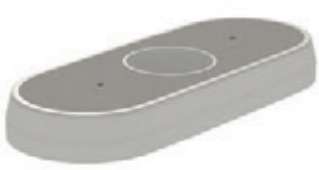


Traffic Islands

Demountable Islands

	Length (mm)	Width (mm)	Height (mm)	Weight (kg)	Conservation Silver Grey no aperture Item Code	Natural, no aperture, Exposed Texture Item Code
Satellite Islands	1500	610	170	670	TDSAT1000	TDSAT0000
Refuge Islands	1200	1200	260	581	TIMEA2660	TIMEA1200
	1500	1500	260	959	TIMEA2500	TIMEA1500
	1800	1800	260	1587	TIMEA2800	TIMEA1800
M16 Lifting Loops					RELIF0002	RELIF0002

*Natural products are manufactured from aggregates sourced locally to the works and contain no pigmentation, therefore colour variation between products from different works is possible.



Satellite Island
To be used in narrow roads with high traffic volume



Refuge Island
to be used in wide roads with high traffic volume

See my related products...

Blister Paving..... pg 75

The Marshalls traffic islands comply with the Traffic Advisory Leaflets TAL 7/95, 7/93 and 11/94 as well as with the Highways Act 1980, the Traffic Calming Act 1992 and the Highways (Traffic Calming) Regulations 1993. They are also compliant with Local Transport Note LTN 01/07 and 01/08.

They come in two profiles: Satellite and Refuge. Both types can be either permanent (fixed in the ground) or demountable (can be disassembled and relocated). All traffic islands are pre-formed in factory controlled conditions, ensuring design accuracy and specification validity. Furthermore, bespoke traffic islands and delineations for cyclists are available for new upcoming cycle areas. A traffic installation kit is included with instructions.