



...Bringing together the smooth lines and contours from the world of automotive design.

Stratic Collection

Timber Stain - Onyx

Timber Stain - Copper

Powder Coat - Quartz

Powder Coat - Carbon

Introducing the new Stratic Collection from Marshalls, a modern and dynamic range of products that mimic the smooth lines and contours found in the world of automotive design.

A combination of materials including timber, cast aluminium and stainless steel provides an extremely durable and low maintenance solution, offered in a variety of contemporary colour options.

Choose from a range of 6 individual elements to suit the landscape, then select your preferred timber stain and finally complement with a metallic powder coat from a range of options.

KEY BENEFITS:

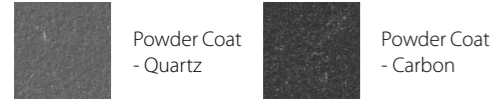
- Contemporary angular design
- Accoya Timber - Consistently durable timber
- Wide slat detail - striking design feature
- Range of coordinated products which can be mixed and matched to suit different environments
- Cast Aluminium for a cleaner more defined shape
- Customise the range to your needs by choosing from a range of timber stains and powder coat colours
- Mixture of materials providing a modern, clean and durable solution
- The collection co-ordinates well with the Celestia paving range.

TECHNICAL BREAKDOWN

STRATIC COLLECTION

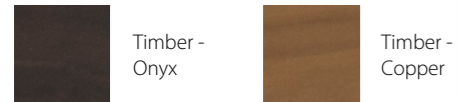
MATERIAL

The bench and seat are built on a stainless steel frame with cast aluminium legs and backrest brackets, finished in Accoya, an extremely durable timber.



FINISHING

Durable polyester powder coating gives a long lasting finish to metallic components, and is available in a choice of two colours - Quartz or Carbon. The timber is coloured and sealed with a water based top coat to give a high sheen finish, available in a choice of two colours.



Recommended colour combinations:

- Onyx & Quartz
- Copper & Carbon

MAINTENANCE

Both the powder coated surfaces and timber elements can be cleaned easily using mild detergents and warm water. Please refer to the operations and maintenance manual on the Marshalls Website.

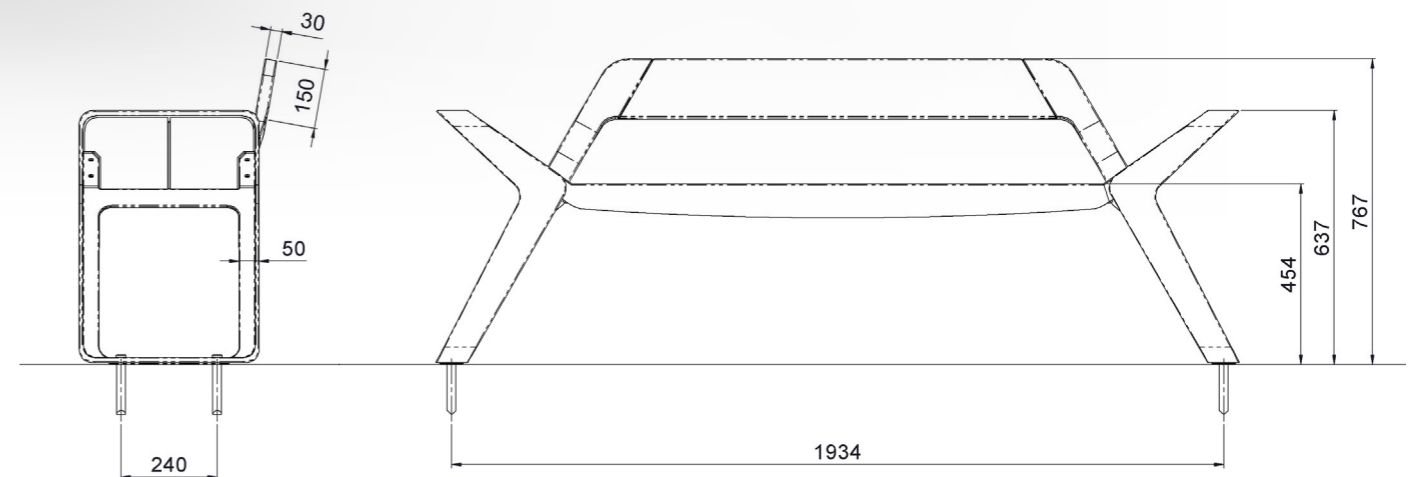
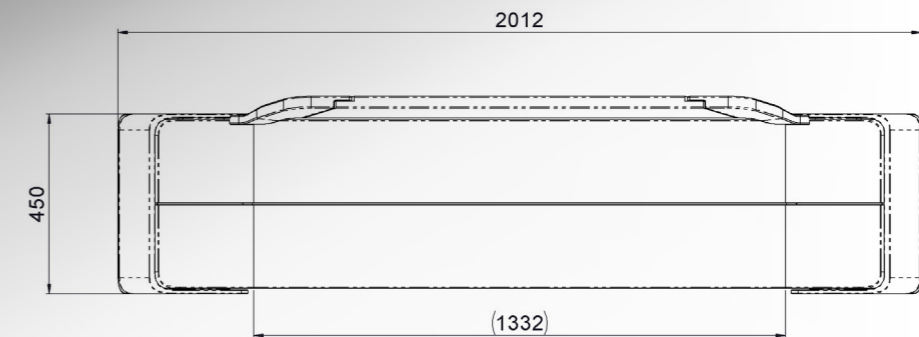
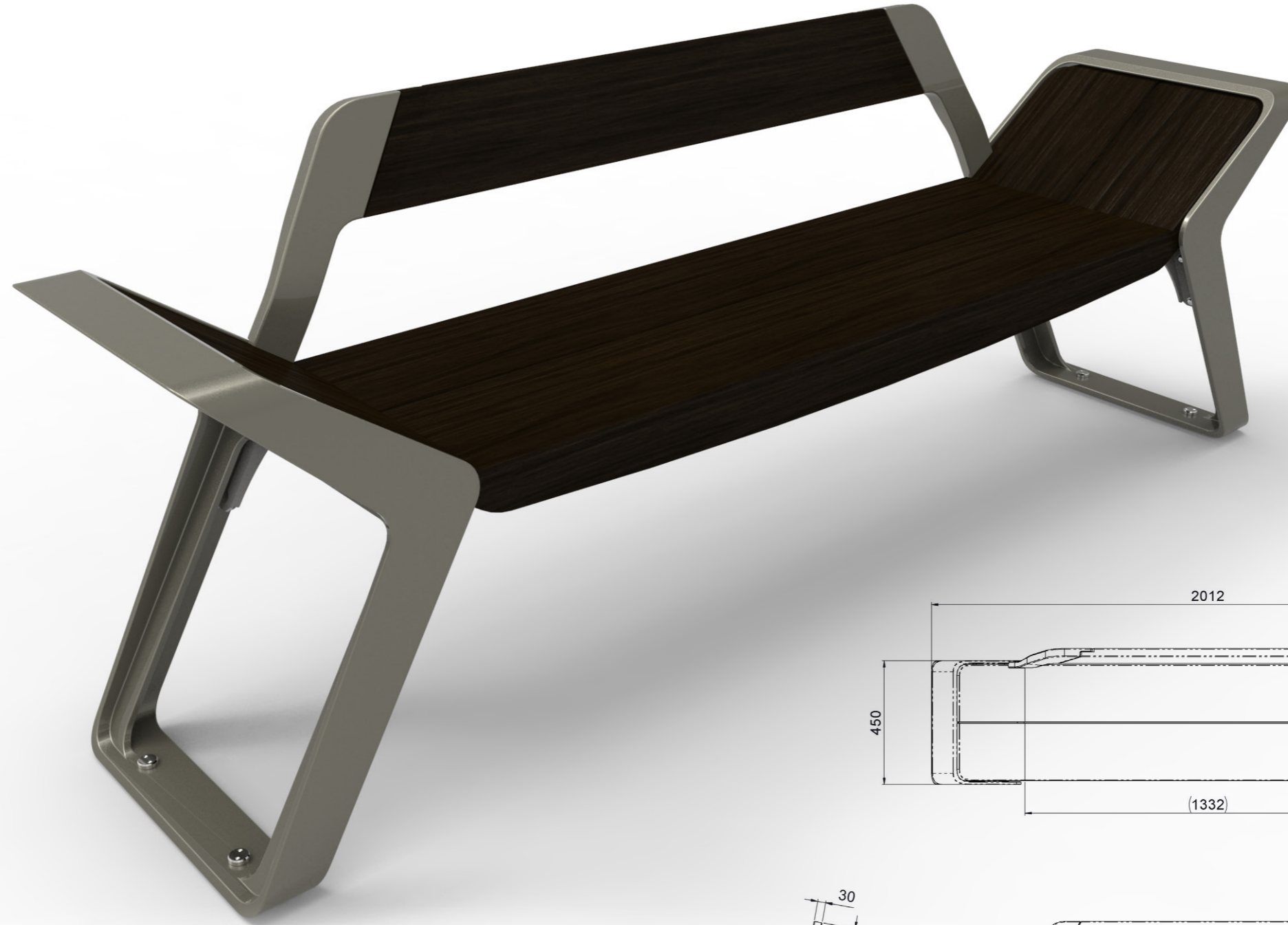
INSTALLATION

Both elements are surface fixed using resin bonded ground anchors and M12 security fixings, enabling quick and secure installation with ease of removal for maintenance if required. Fixings are supplied.

OPTIONS AVAILABLE:

Seat

Dimensions: L 2012 mm, W 450 mm, H 767 mm
Weight: 56 kg



TECHNICAL BREAKDOWN

STRATIC COLLECTION

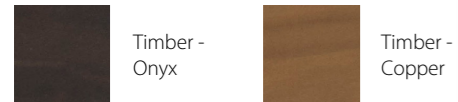
MATERIAL

The bench and seat are built on a stainless steel frame with cast aluminium legs and backrest brackets, finished in Accoya, an extremely durable timber.



FINISHING

Durable polyester powder coating gives a long lasting finish to metallic components, and is available in a choice of two colours - Quartz or Carbon. The timber is coloured and sealed with a water based top coat to give a high sheen finish, available in a choice of two colours.



Recommended colour combinations:

- Onyx & Quartz
- Copper & Carbon

MAINTENANCE

Both the powder coated surfaces and timber elements can be cleaned easily using mild detergents and warm water. Please refer to the operations and maintenance manual on the Marshalls Website.

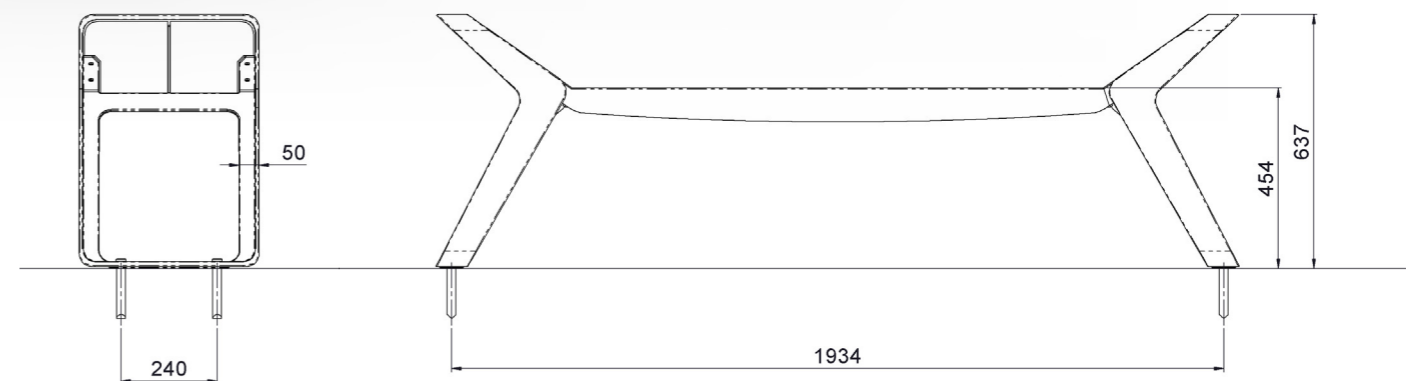
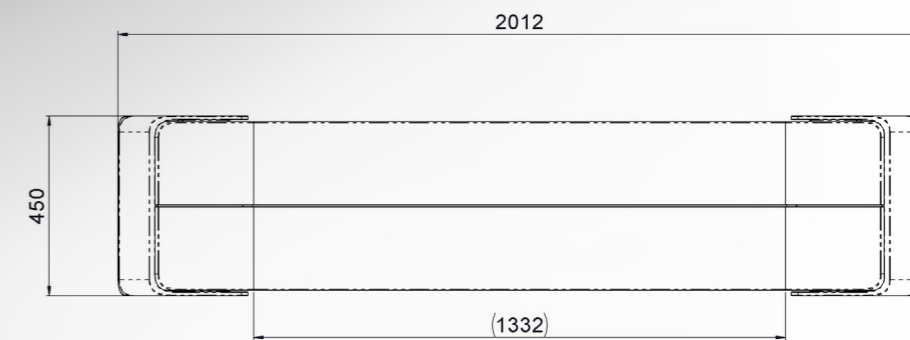
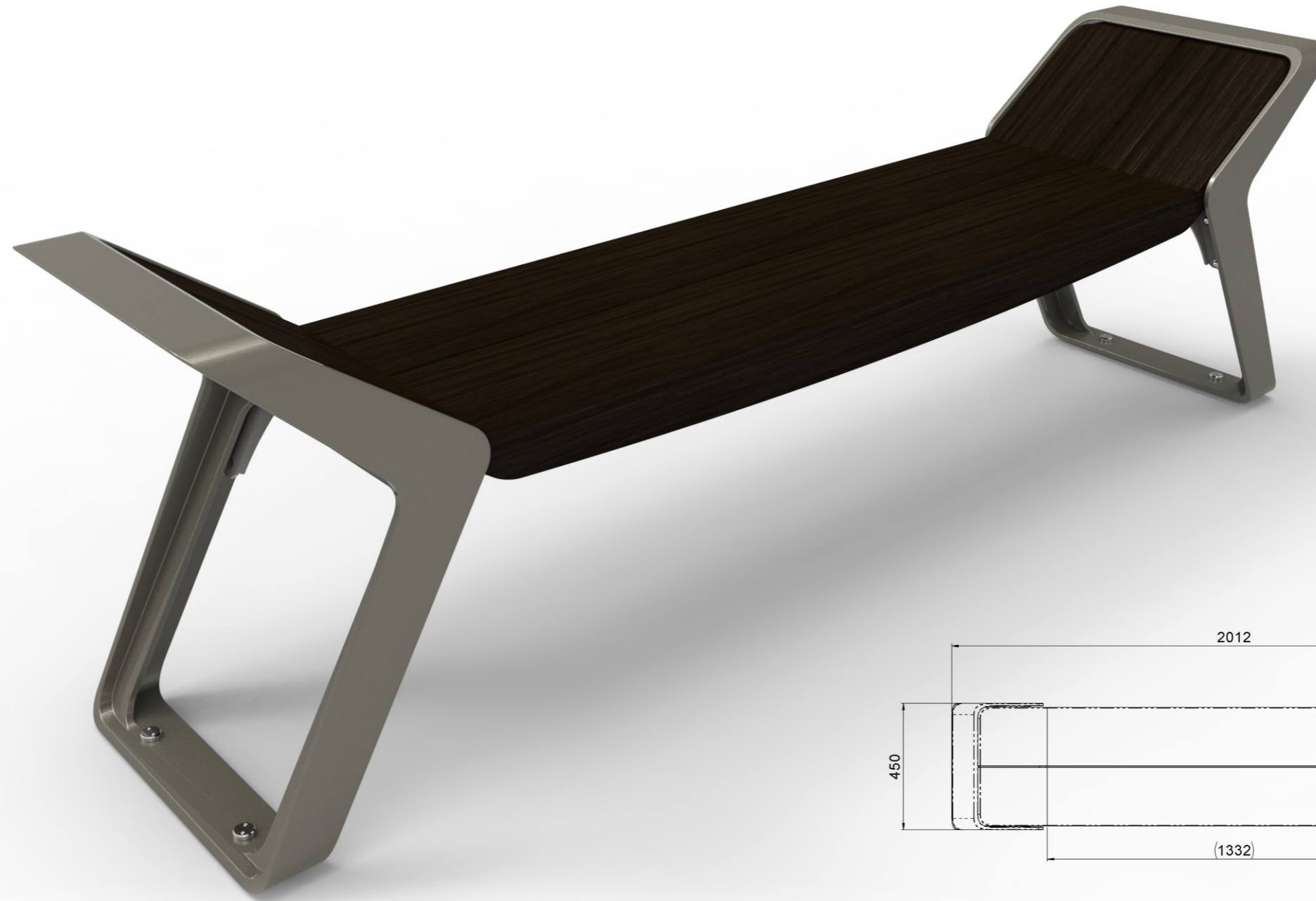
INSTALLATION

Both elements are surface fixed using resin bonded ground anchors and M12 security fixings, enabling quick and secure installation with ease of removal for maintenance if required. Fixings are supplied.

OPTIONS AVAILABLE:

Bench

Dimensions: L 2012 mm, W 450 mm, H 637 mm
Weight: 46 kg



TECHNICAL BREAKDOWN

STRATIC COLLECTION

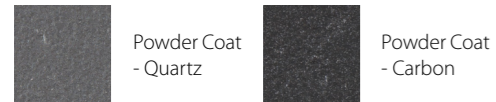
MATERIAL

The planter is built using a durable stainless steel frame with high quality Accoya timber cladding.

The planter comes equipped with plastic liner and integrated irrigation system.

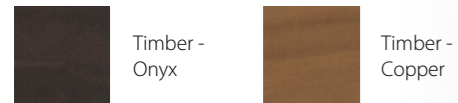
The irrigation system uses the process of capillary action to feed the plants where it needs water the most - the roots. It provides 100% water efficiency, prevents over and under watering and reduces watering frequency by up to six weeks. Further details and full planter build up can be provided upon request.

The cycle stand is formed from cast aluminium.



FINISHING

Durable polyester powder coating gives a long lasting finish to the metallic components. The timber is coloured using a water based stain to give a choice of colour options. The metal elements are powder coated in a choice of two colours Quartz or Carbon.



Recommended colour combinations:

- Onyx & Quartz
- Copper & Carbon

MAINTENANCE

Both the powder coated surfaces and timber elements can be cleaned easily using mild detergents and warm water. Please refer to the operations and maintenance manual on the Marshalls Website.

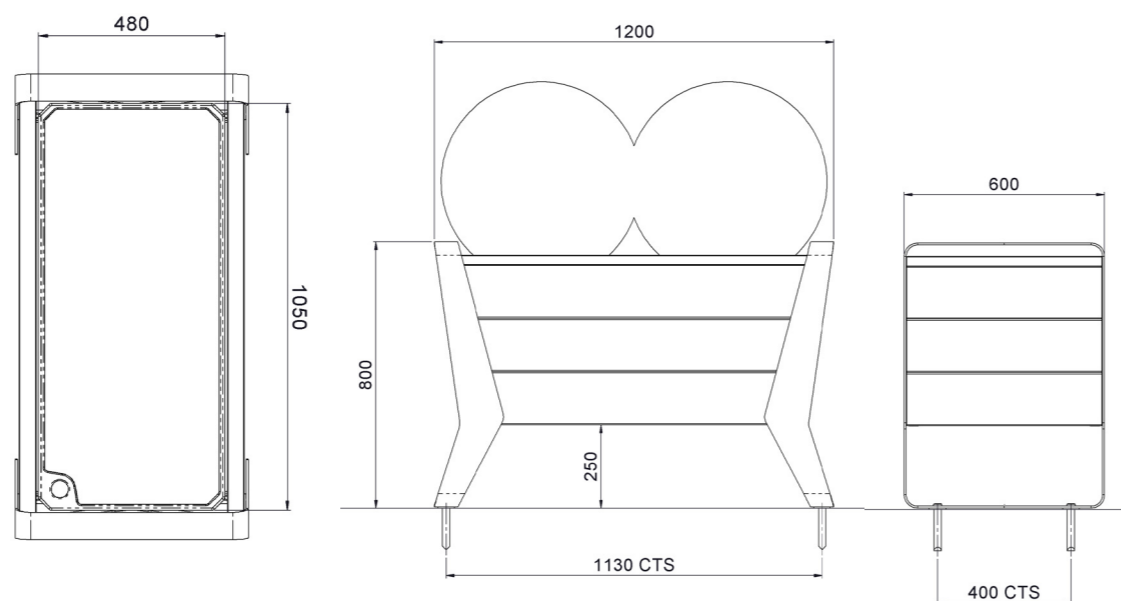
INSTALLATION

All elements are surface fixed using resin bonded ground anchors and M12 security fixings, enabling quick and secure installation with ease of removal for maintenance if required. Fixings are supplied.

OPTIONS AVAILABLE:

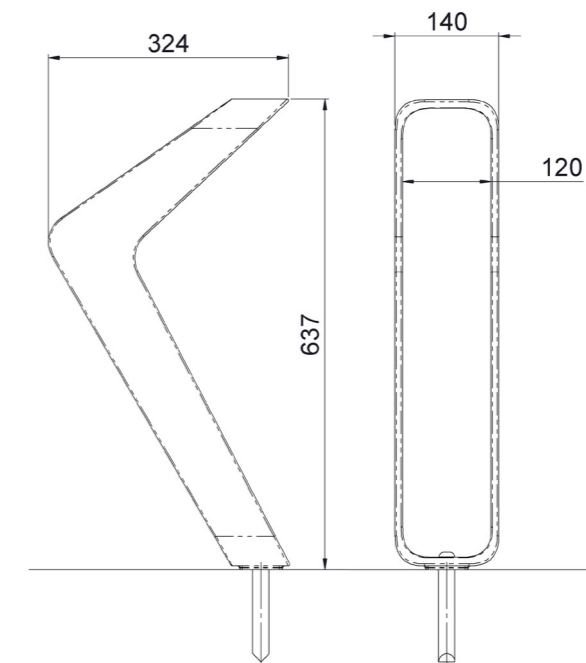
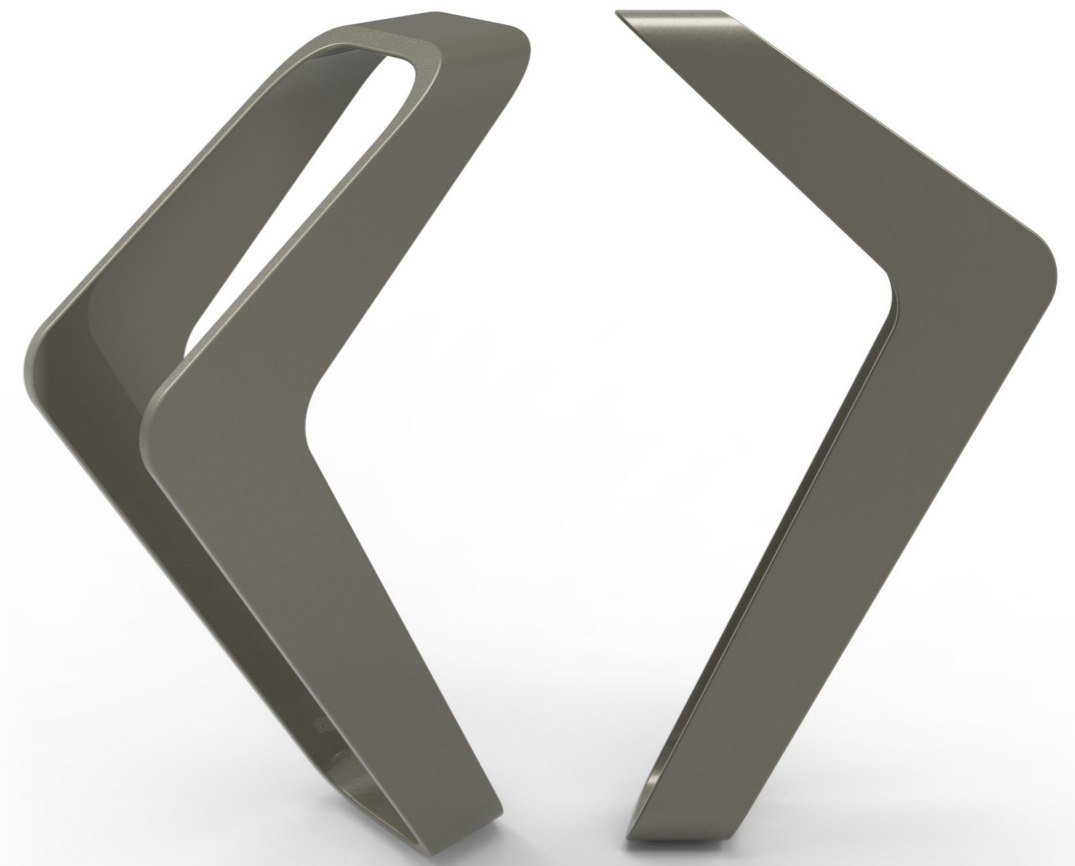
Planter

Dimensions: L 1200 mm, W 600 mm, H 800 mm
Weight: 75 kg



Cycle Stand

Dimensions: L 324 mm, W 140 mm, H 637 mm
Weight: 5 kg



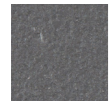
TECHNICAL BREAKDOWN

STRATIC COLLECTION

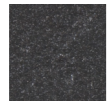
MATERIAL

The litter bin is built around a durable stainless steel frame with high quality Accoya timber cladding, and is available as a standard bin or mixed recycle bin.

Both bin variants come equipped with galvanised steel liners to minimise manual handling. The standard litter bin also comes equipped with a cigarette stubber plate on the bin lid. The bin is emptied via a front tilting mechanism.



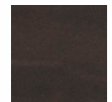
Powder Coat
- Quartz



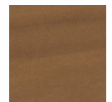
Powder Coat
- Carbon

FINISHING

Durable polyester powder coating gives a long lasting finish to the metallic components. The timber is coloured using a water based stain to give a choice of colour options. The metal elements are powder coated in a choice of two colours Quartz or Carbon.



Timber -
Onyx



Timber -
Copper

Recommended colour combinations:

- Onyx & Quartz
- Copper & Carbon

MAINTENANCE

Both the powder coated surfaces and timber elements can be cleaned easily using mild detergents and warm water. Please refer to the operations and maintenance manual on the Marshalls Website.

INSTALLATION

All elements are surface fixed using resin bonded ground anchors and M12 security fixings, enabling quick and secure installation with ease of removal for maintenance if required. Fixings are supplied.

OPTIONS AVAILABLE:

Litter Bin

Dimensions: L 500 mm, W 450 mm, H 1100 mm

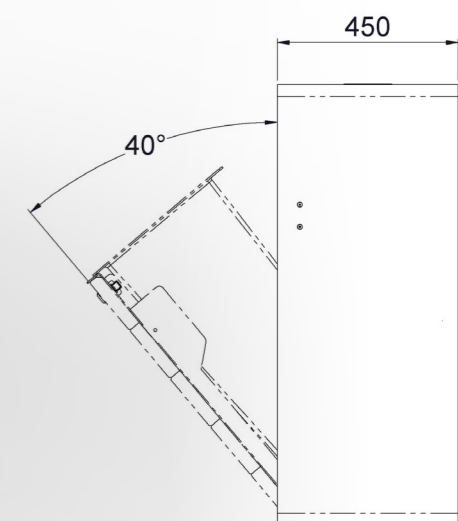
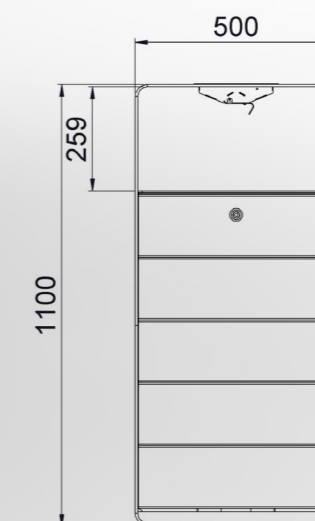
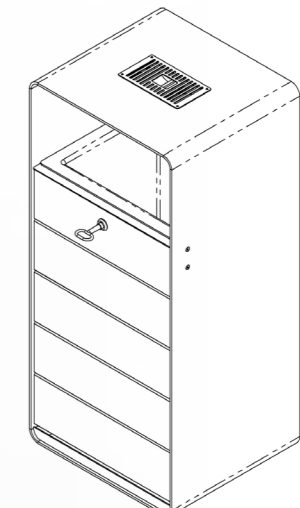
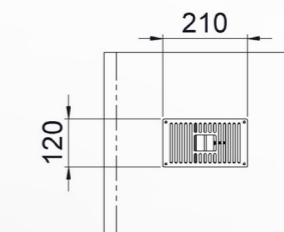
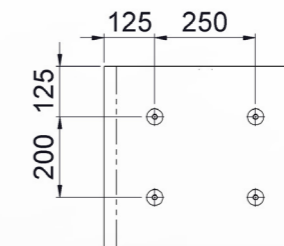
Weight: 120 kg



Front View



Back View



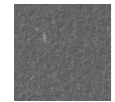
TECHNICAL BREAKDOWN

STRATIC COLLECTION

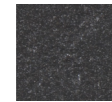
MATERIAL

The litter bin is built around a durable stainless steel frame with high quality Accoya timber cladding, and is available as a standard bin or mixed recycle bin.

Both bin variants come equipped with galvanised steel liners to minimise manual handling. The standard litter bin also comes equipped with a cigarette stubber plate on the bin lid. The bin is emptied via a front tilting mechanism.



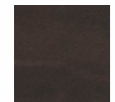
Powder Coat
- Quartz



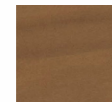
Powder Coat
- Carbon

FINISHING

Durable polyester powder coating gives a long lasting finish to the metallic components. The timber is coloured using a water based stain to give a choice of colour options. The metal elements are powder coated in a choice of two colours Quartz or Carbon.



Timber -
Onyx



Timber -
Copper

Recommended colour combinations:

- Onyx & Quartz
- Copper & Carbon

MAINTENANCE

Both the powder coated surfaces and timber elements can be cleaned easily using mild detergents and warm water. Please refer to the operations and maintenance manual on the Marshalls Website.

INSTALLATION

All elements are surface fixed using resin bonded ground anchors and M12 security fixings, enabling quick and secure installation with ease of removal for maintenance if required. Fixings are supplied.

OPTIONS AVAILABLE:

Recycling Litter Bin

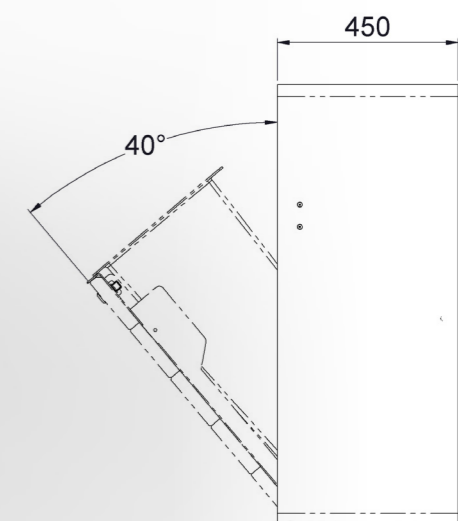
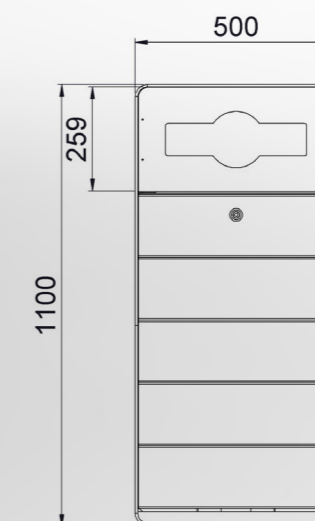
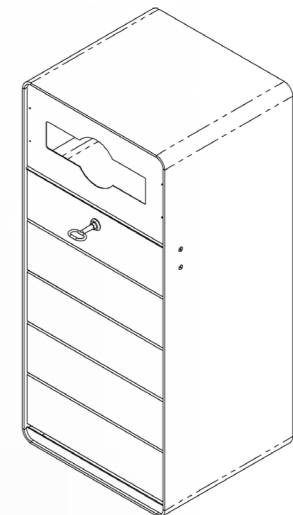
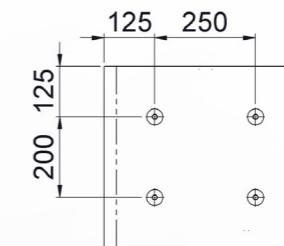
Dimensions: L 500 mm, W 450 mm, H 1100 mm
Weight: 120 kg



Front View



Back View



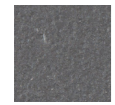
TECHNICAL BREAKDOWN

STRATIC COLLECTION

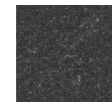
MATERIAL

The LED marker body is built around a durable stainless steel frame with accoya timber cladding. The high performance LED unit is protected to IP66 and further protected with an aluminium grille and acrylic diffuser, creating soft low level illumination.

The high efficiency LED system is programmable to give a variety of light outputs and is further controllable using industry standard DALI protocol. Integrated photocells can be fitted on request.



Powder Coat
- Quartz

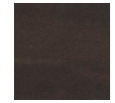


Powder Coat
- Carbon

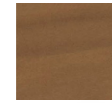
FINISHING

Durable polyester powder coating gives a long lasting finish to the metallic components.

The timber is coloured using a water based stain to give a choice of colour options. The metal elements are powder coated in a choice of two colours Quartz or Carbon.



Timber -
Onyx



Timber -
Copper

Recommended colour combinations:

- Onyx & Quartz
- Copper & Carbon

MAINTENANCE

Both the powder coated surfaces and timber elements can be cleaned easily using mild detergents and warm water. Please refer to the operations and maintenance manual on the Marshalls Website.

INSTALLATION

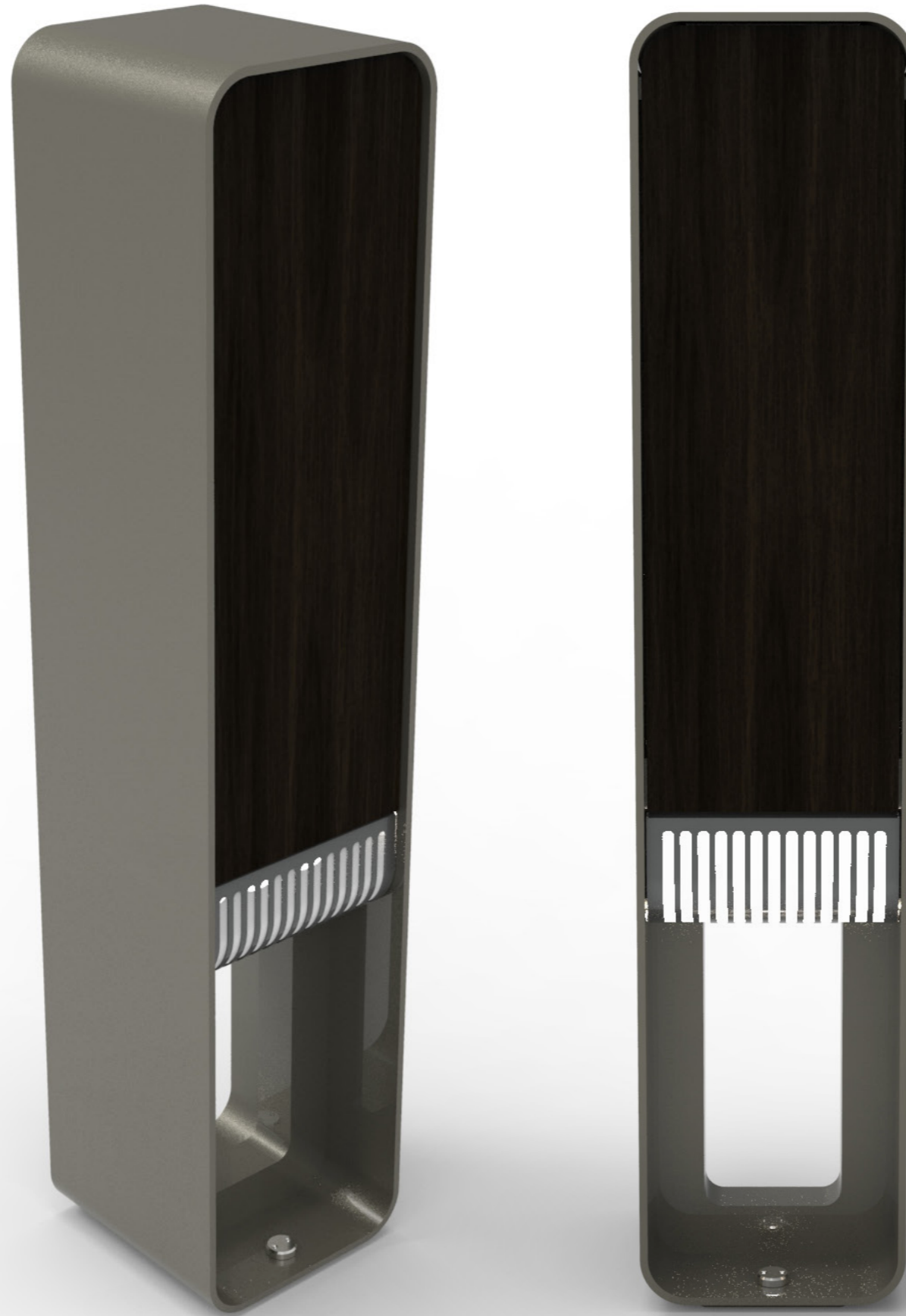
The Stratic LED Marker is surface mounted as standard. To install the mark and core drill locations for chemical anchor socket. Ensure holes are free from debris and to correct depth, before fitting chemical anchors. Pull power cable through duct and up the channel within the product insulator. Lower product over sockets and fix in place using two M12 fasteners. Wire electrical connections and test product function. Fixings are supplied.

OPTIONS AVAILABLE:

LED Marker

Dimensions: L 200 mm, W 200 mm, H 950 mm

Weight: 56 kg



Electrical Specification

Supply Voltage: 120-250V

Supply Current: 0.1A TYP

Power: 25W Max

Light Output: 2300lm Max

LED Efficiency: 86% at full load

DALI compatible, with both dimming and programming options.

*Lumens stated based on single variant ignoring diffuser losses

