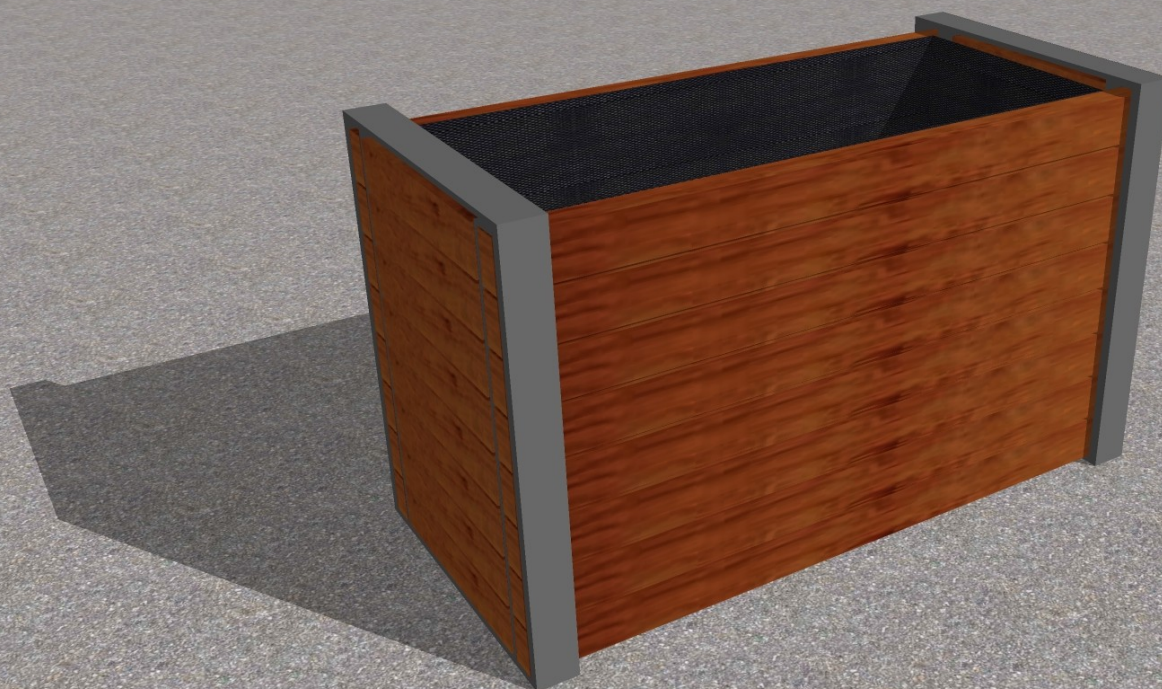




NEPTUNE

CONTEMPORARY AND TRADITIONAL STREET FURNITURE



Cerro Planter Square

Our Cerro Range is based around our beautiful cast Aluminium seat and bench ends finished in satin grey and complimented with 45 x 70mm hardwood.

Dimensions Widths: 1000, 1500, 2000mm (sizes are approximate)

Lengths: 500, 1000, 1500, 2000mm (sizes are approximate)

Heights: 500, 700, 900mm (sizes are approximate)

Metal All metalwork is finished with an exterior grade base and top coat to RAL 7043 (traffic grey) as standard or to virtually any BS or RAL reference if required

Wood All woodwork is treated with an exterior grade base coat and two top coats achieving a colour similar to RAL 8004

Delivery Each planter is supplied fully assembled and delivered on a pallet where possible

Head Office: Neptune Street Furniture, Time House, 19 Hillsons Road, Botley, Hampshire, SO30 2DY

Phone: 01962 777799 - **Fax:** 01962 777723

Email: enquiries@nofl.co.uk - **Website:** www.nofl.co.uk