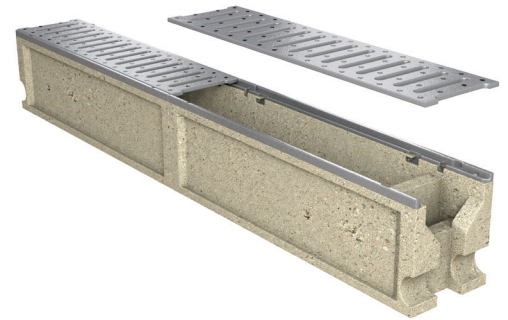


Product code: PV03001

Permachannel is a versatile, linear treatment system that can provide source control and pollution treatment in a wide variety of locations and applications.

The Permachannel functions as a combined run-off collection, silt and oil interceptor and treatment system. It is designed to be ideally laid with zero gradient to prevent the development of lateral velocities, 'stilling' sheet run-off from each sub-catchment and encouraging silt deposition within each channel. The outlets discharge from the side of the channel via a weir and baffle component which separates oils and prevents the effluent and silt from progressing into the rest of the drainage system.



Key Benefits

- Gravity separation of oils and silts at source
- Trapped effluent naturally treated by aerobic digestion
- Can enhance water quality and eliminate the need for end of line petrol/oil interceptors
- The system complies with the regulations of the treatment train criteria in a SuDS scheme as defined in PPG3
- 100% recyclable

Applications

Permachannel is used for stormwater collection, interception and the treatment of associated pollutants. The system comprises of single or multiple interconnected channels appropriately located to collect surface water run-off from sub-catchments of predominantly impervious or pervious pavements. Permachannel is suitable for use in a range of applications including residential, industrial estates, car parks, sports pitches, roofs, basements, pedestrian areas and rainwater harvesting.

Performance

Permachannel is rated to D400 loading in accordance with BS EN 124:1994 when installed with concrete bed and haunch in accordance with site specific construction details.

Installation Standard

Permachannel must be installed on a load bearing concrete bed and haunch in accordance with site specific construction details.

Technical Support

Detailed guidance and assistance is available.

For further information, please contact our Technical Team on **+44 (0) 1509 615 100** or email civils@polypipe.com

ELEMENT	VALUE
PHYSICAL PROPERTIES	
Weight per unit	29kg
Length	1000mm
Width	150mm
Depth	210mm
Material	Polymer Concrete
Grating	Ductile iron standard steel safe
Catchment area	30m ²
Loading	Rated to D400
Average effective perforated surface area	Polymer concrete
Chemical Resistance	The polymer concrete has a capillary-free, non porous sealed structure, which makes it naturally resistant to most chemicals (i.e. petrols, oils and acids)
Effluent concentrations are below PPG3 Class I requirements	

Note: Ancillary Universal Channel Connector 40mm diameter

All descriptions and illustrations in this publication are intended for guidance only and shall not constitute a 'sale by description'. All dimensions given are nominal and Polypipe may modify and change the information, products and specifications from time to time for a variety of reasons, without prior notice. The information in this publication is provided 'as is' on January 2016. Updates will not be issued automatically. This information is not intended to have any legal effect, whether by way of advice, representation or warranty (express or implied). We accept no liability whatsoever (to the extent permitted by law) if you place any reliance on this publication you must do so at your own risk. All rights reserved. Copyright in this publication belongs to Polypipe and all such copyright may not be used, sold, copied or reproduced in whole or part in any manner in any media to any person without prior consent. Polypipe is a registered trademark of Polypipe. All Polypipe products are protected by Design Right under CDPA 1988. Copyright © 2016 Polypipe. All rights reserved.