

Protech GM Super

GAS PROTECTION

• HIGH RISK CHARACTERISTIC SITES •

REGULATIONS COMPATIBILITY TABLE

	CIRIA 665 CHARACTERISTIC SITUATION 2	CIRIA 665 CHARACTERISTIC SITUATION 3-6	BS8485 CHARACTERISTIC SITUATION 2	BS8485 CHARACTERISTIC SITUATION 3-6	BRE 211 RADON	NHBC AMBER 1	NHBC AMBER 2 & RED
METHANE	✓	✓	✓	✓	N/A	✓	✓
CARBON DIOXIDE	✓	✓	✓	✓	N/A	✓	✓
RADON	N/A	N/A	N/A	N/A	✓	N/A	N/A

DESCRIPTION

Protech GM Super is a high performance proprietary reinforced gas barrier, that incorporates an integral aluminium foil layer, for maximum protection against ground-borne gases. This has been specifically designed to conform with the latest guidance documents. Due to its unique composition, the membrane is extremely robust and flexible and, therefore, easy to install on site. The membrane also provides protection from damp when placed below the slab and, therefore, there is no need to install a separate DPM.

SPECIFICATION

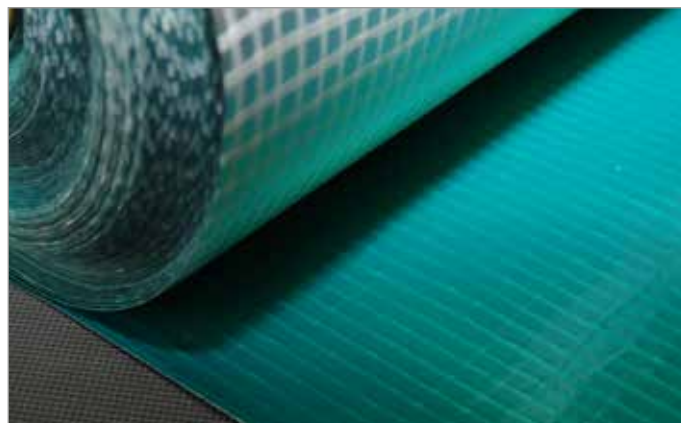
CIRIA C665, BS8485:2015 & Local Authority Ground Gas Handbook recommended that gas membranes are specified on the basis of the 'need to survive' construction, i.e. use one that is puncture and tear resistant.

Thickness should not be the main determinant of the suitability of a membrane for a particular site, although it can indirectly influence some key performance parameters.

In practise, because of the nature of construction sites, the durability, survivability and robustness of membranes are equally important than purely permeability to gas.

Protech GM Super incorporates a reinforced grid to ensure that maximum protection is achieved when installed to manufacturers' instructions.

The need for high quality workmanship during installation should not be under-estimated. The health and safety of the occupants of the building is dependent on its satisfactory performance. If installed incorrectly or damaged during the construction process, the membrane is rendered ineffective and will fail to provide adequate protection against the ingress of ground gas or vapours.



TYPICAL PROPERTIES	
Roll Length	50m
Width	2m
Weight	0.370kg/m ²
Thickness	0.4mm
Colour	Green / Silver
Methane Permeability (ISO 15105-1)	≤ 0.1 ml/day/m ²

REQUIRED ACCESSORIES

- Protech GM Super Starter Band (1m x 50m)
- Protech GM Tape
- Protech GM Tophats
- Protech SAGM (Self Adhesive Gas Membrane)
- Protech GM Flashing Strip
- Protech GM Super Corner Units
- Protech GM Primer
- Protech GM 3mm Protection Board
- Protech GM Protection Fleece
- Protech I25

VENTING

On sites where venting is required, our Provoid Venting System should be used. We can provide design advice for both passive and active venting systems to suit individual site requirements.

Protech GM Super Starter Band

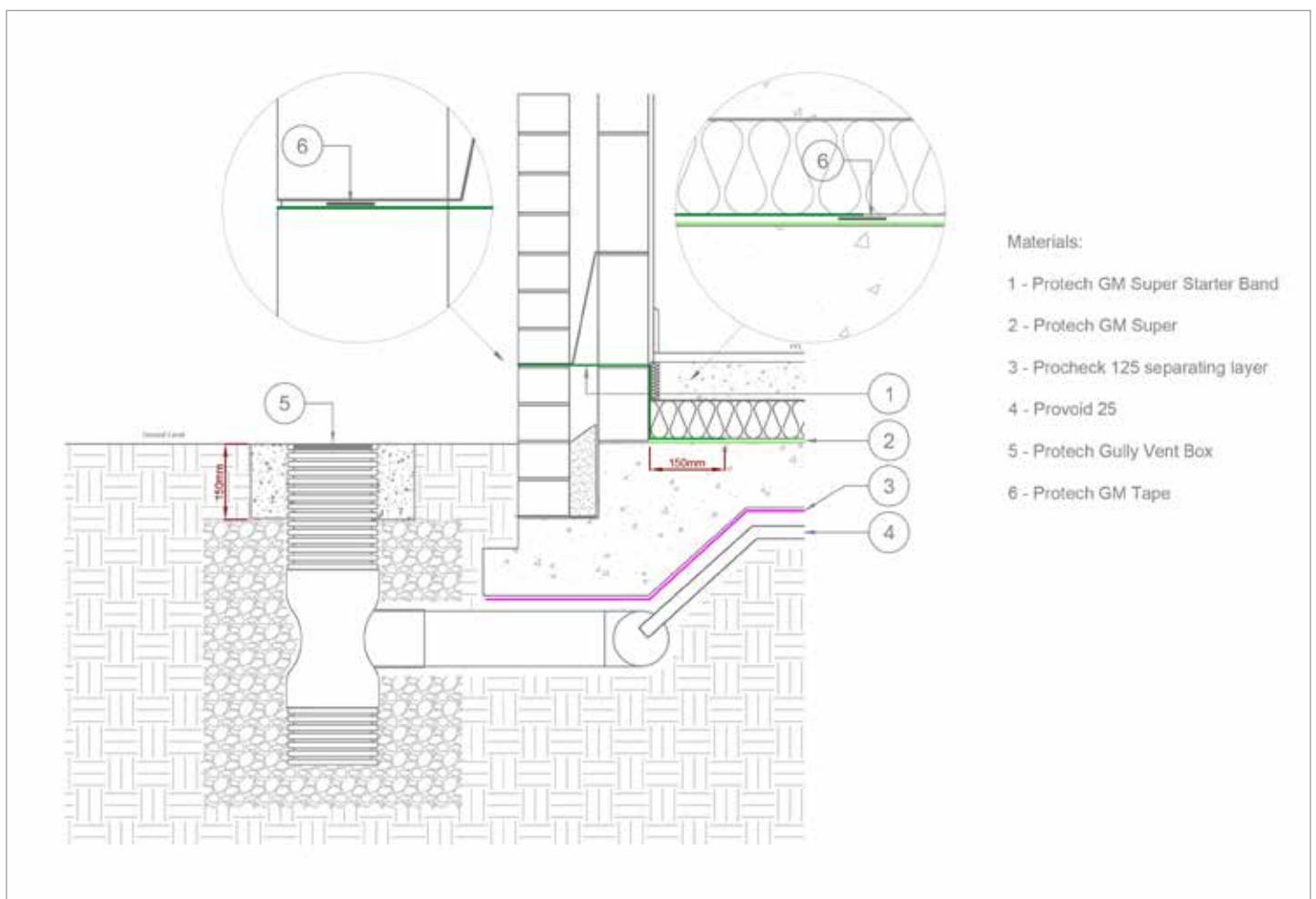
GAS PROTECTION

DESCRIPTION

The Protech GM Super Starter Band has a dual function, to provide a continuous barrier to gas which is then linked in with the horizontal gas membrane and it will also function as a DPC within the wall.

The Starter Band goes through the cavity with an architectural DPC or cavity tray which should be fixed with Protech GMTape in order to stop a creation of a slip plane.

On a solid wall internal wall construction there is no requirement for any additional DPC or protection to the Starter Band. When used in a cavity wall a separate cavity tray or architectural DPC is recommended to protect the spanning section of the Starter Band from damage from mortar spots and other debris created during construction. This cavity tray would be installed in the same course and fixed to Protech GMTape again to prevent a creation of a slip plane.



Download a full Gas Protection brochure from our website...

www.proctorgroup.com



contact@proctorgroup.com | +44 (0) 1250 872261

Revised June 2018