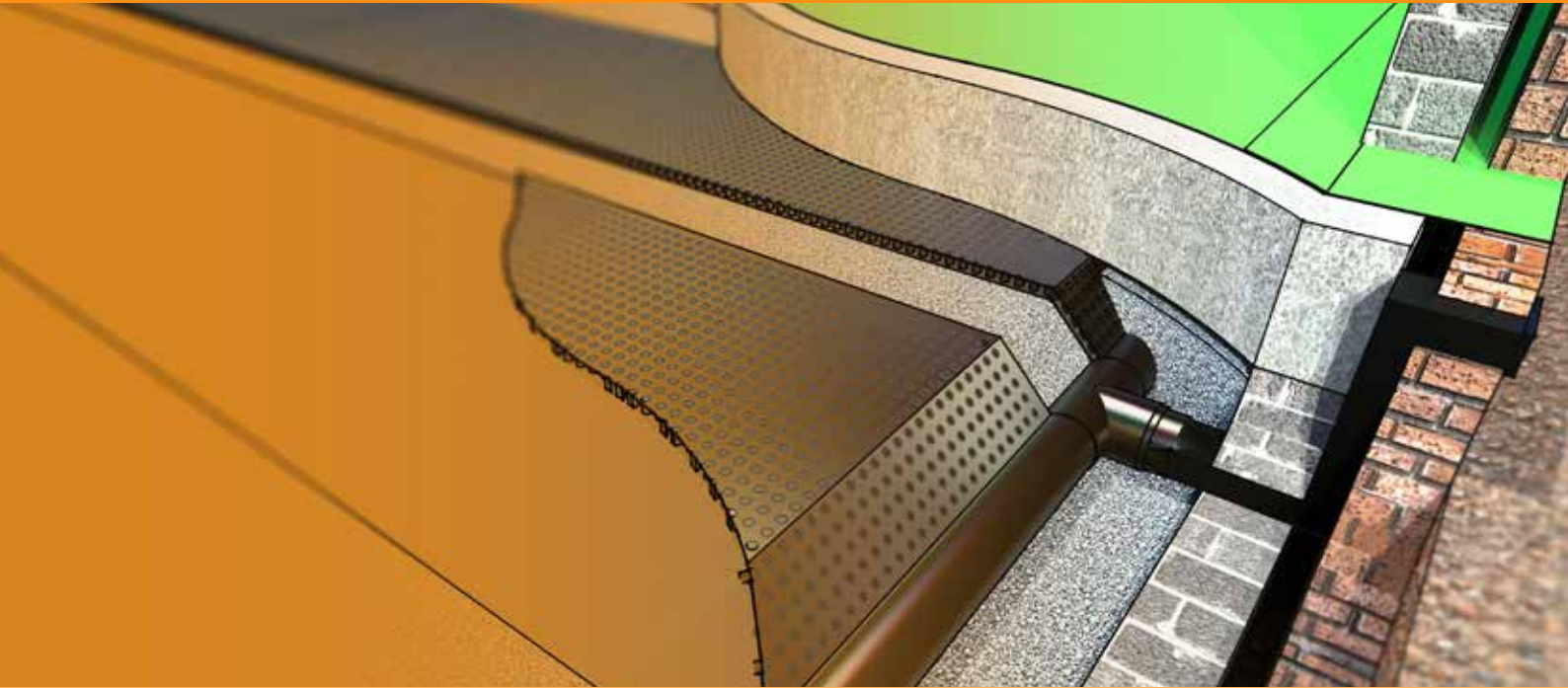


# Protech GM Accessories

GROUND GAS PROTECTION



## INTRODUCTION

Both the British Standard BS8485:2015 and the CIRIA C735 guidance document emphasise the importance of on site verification to ensure design performance targets for gas membrane systems are met. In order to achieve this, good installation and site practices are increasingly important. To assist contractors in meeting the strict guidance given in the most recent standards documents, the A Proctor Group supplies a wide range of membrane accessories to ensure the installation process is both simple and robust.

## PROTECH GM ACCESSORIES



**PROTECH GM FLASHING**

**Product Code:**A31210 / A31211

Protech GM Flashing Strip is a waterproof and gas resistant tape protected by an aluminium film and reinforced with a polyester film. Used for detailing stanchions, corners, penetrations and repairs.

**Dimension:** 150mm x 10m (A31210)  
300mm x 10m (A31211)



**PROTECH GR-DPC**

**Product Code:**A30212

Protech GR-DPC is a gas resistant DPC used through junctions with cavities or masonry to protect against the ingress of gas and damp.

**Dimension:** 600mm x 20m



**PROTECH GM PROTECTION FLEECE**

**Product Code:**A32005

Protech GM Protection Fleece used to protect the integrity of the Protech Gas Membranes from follow on trades or from sharp protrusions in made ground.

**Dimension:** 1m x 50m (A32005)

\*non-stock item



### PROTECH SAGM

**Product Code:A30204**

Protech SAGM is a self adhesive gas and waterproofing membrane for use in detailing and vertical installation applications.

**Dimension: 2mm x 1m x 15m**



### PROTECH GM PRIMER

**Product Code:A31220**

Protech GM Primer is used in conjunction with Protech SAGM and Protech GM Flashing in order to consolidate the substrate and ensure complete bond development. Protech GM Primer is supplied as a single pack brush applied liquid coating.

**Dimension: 5 litre**



### PROTECH PROTECTION BOARD

**Product Code:A33050**

Protech Protection Board used to protect the integrity of the Protech Gas Membranes mainly in vertical applications.

**Dimension: 3mm x 1.2m x 2.4m**



### PROTECH GM TAPES

**Product Code:A31208**

Protech GMTape is used to seal overlaps in gas membranes and accessories, and also below timber sole plates.

**Dimension: 30mm x 30m**



### PROTECH TF TAPE

**Product Code:A312161**

Protech TFTape is an extruded tape designed for use on timber frame constructions to act as a gasket where the fixings penetrate the gas membrane or starter band.

**Dimension: 100mm x 15m**



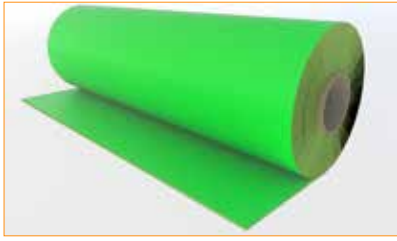
### PROTECH LAGM

**Product Code:A30205**

Protech LAGM\* (Liquid Applied Gas Membranes) is used in areas of vertical applications or in hard to treat areas.

**Size: 20 litre**

\*non-stock item



### PROTECH GM SUPER STARTER BAND

**Product Code:**A30215

Protech GM Super Starter Band has a dual function to provide a continuous barrier to gas which is then linked in with the horizontal Protech GM Super Membrane. Protech GM Super Starter Band crosses the cavity to prevent ingress of gas.

**Dimension:** 1m x 50m

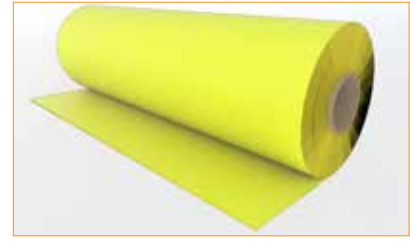


### PROTECH VOC FLEX STARTER BAND

**Product Code:**A30223

Protech VOC Flex Starter Band has a dual function to provide a continuous barrier to gas which is then linked in with the horizontal Protech VOC Flex Membrane. Protech VOC Flex Starter Band crosses the cavity to prevent ingress of gas.

**Dimension:** 1m x 50m



### PROTECH GM+ STARTER BAND

**Product Code:**A30214

Protech GM+ Starter Band has a dual function to provide a continuous barrier to gas which is then linked in with the horizontal Protech GM+ Membrane. Protech GM+ Starter Band crosses the cavity to prevent ingress of gas.

**Dimension:** 1m x 50m



### PROTECH GM TOPHATS

**Product Code:** A31601V  
A31604V  
A31605V

Protech GM Tophats are used to detail around pipe penetrations. Tophats available to suit all Protech gas membranes. To be used in conjunction with Protech GM Flashing 150mm (A31210 / A31211).

**Sizes available:** 110mm (A31601V)  
130mm (A31604V)  
160mm (A31605V)

*Other sizes available.*



### PROTECH TOOL BOX

**Product Code:**A33052

Starter Toolbox for detailing gas membranes.  
Each box includes:

- 45mm Silicone Seam roller
- 6mm Brass Penny Roller
- Heavy Duty Scissors
- 5m Tape Measure
- Permanent Marker Pen



### PROTECH GM CORNERS

**Product Code:**A30807

Protech GM Internal & External Corners are recommended to achieve a gas tight seal and as technically a better solution. Corners available to suit all Protech gas membranes. Alternative sizes available on request.

**Dimension:** 150mm x 150mm x 150mm

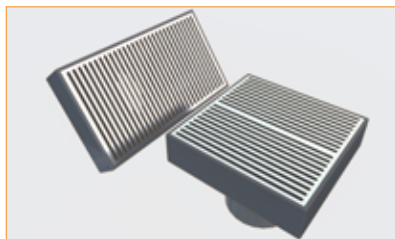


### PROVOID GULLY VENT BOX

Product Code: A31201

Provoid Gully Vent Boxes are an integral part of the Provoid Gas Venting System to act as inlets and outlets. Provoid Gully Vent Box comprises:

- Alloy Grating
- Top section - 150mm x 430mm
- Base section - 150mm x 330mm
- T-piece has a 150mm x 300mm socketed outlet to suit 110mm collector pipe



### PROVOID GROUND LEVEL GAS VENT BOX

Product Code: A31203

Provoid Ground Level Vent Boxes\* are an integral part of the Provoid Gas Venting System to act as inlets and outlets. This item comprises of:

- Stainless steel grate
- Top Section – 150mm x 430mm
- Base Section – 150mm x 330mm
- T-Piece 150mm x 300mm socketed outlet to suit 110mm collection pipe



### PROVOID FLAT T PERISCOPIC CONNECTOR

Product Code: A33053

Provoid Flat T Periscopic Connectors\* are used to connect the Provoid Gas Vent System to the Provoid Telescopic Vents.



### PROVOID BTB CONNECTORS 900MM OPEN

Product Code: A31603

Provoid BTB Connectors\* (Open) are used to provide a carrier to transmit going through dwarf walls.



### PROVOID SOLID COLLECTION PIPE

Product Code: A31212/ A31225/A31204/ A31209

Provoid Solid Collection Pipe is used to connect the Provoid T Connectors to assist the Provoid Strip Formation System in the dilution of potential gases under the slab.

Sizes available: 110mm x 1m\*  
110mm x 2m  
110mm x 3m\*  
110mm x 6m\*

\*non-stock item



### PROVOID FLAT T GULLY CONNECTOR

**Product Code:**A33054

Provoid Flat T Gully Connectors are used to connect the Provoid Gas Vent System to the Provoid Gully and Ground Level Gas Vent Box.



### PROVOID T CONNECTORS

**Product Code:**A31903

Provoid T Connectors (open) are used to connect the Provoid Gas Vent System to the inlets and outlets.



### END CAPS FOR PROVOID T CONNECTORS

**Product Code:**A31205

End Caps are used to close off Provoid T Connectors.

110mm diameter End Caps.



### PROVOID SLOTTED COLLECTION PIPE

**Product Code:**A31218/ A31228/A31219/ A31221

Provoid Slotted Collection Pipe\* is used to connect the Provoid T Connectors to assist the Provoid Blanket Formation System in the dilution of potential gases under slab.

**Sizes available:** 110mm x 1m\* (A31218)  
110mm x 2m (A31228)  
110mm x 3m\* (A31219)  
110mm x 6m\* (A31221)



### PROVOID GAS VENTING BOLLARDS

**Product Code:**A31206

Provoid Gas Venting Bollards\* – are an integral part of the Provoid Gas Venting System to act as inlets and outlets.



### PROVOID GAS VENTING STACKS

**Product Code:**A31216

Provoid Gas Venting Stacks\* – are an integral part of the Provoid Gas Venting System to act as inlets and outlets when high level ventilation is required. This item comprises of:

- 110mm External Grade Duct
- Wall Brackets (External Grade)
- 90 Degree Bend (External Grade)
- 110mm Aspirating Cowl

\*non-stock item



### PROVOID HORIZONTAL ADAPTOR

**Product Code:A33055**

Provoid Horizontal Adaptor\* allows a connection from the Provoid Periscopic Vent to the Provoid T Connectors for ventilation under the slab.



### PROVOID VERTICAL ADAPTOR

**Product Code:A30220**

Provoid Vertical Adaptors\* are 1m long sleeve to vertically extend the Provoid Periscopic Vent.

**Dimension: 1m length**



### PROVOID PERISCOPIC VENT INCLUDING AIR BRICK (TERRACOTTA)

**Product Code:A31217**

Provoid Periscopic Vents\* are an integral part of the Provoid Gas Venting System to act as inlets and outlets.

*ALTERNATIVE AIR BRICK COLOURS:*



**GREY**



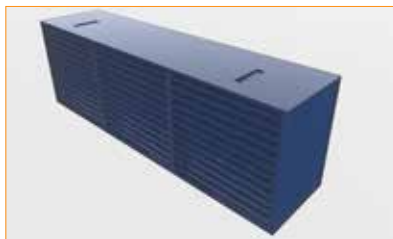
**BLACK**



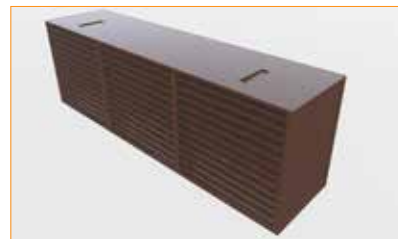
**BUFF / SAND**



**WHITE**



**BLUE / BLACK**



**BROWN**



*“I believe the success of the A.Proctor Group is down to a solid foundation of innovation backed up by an excellent loyal and committed team, every one of them playing an important role in our continued success. Scotland provides us with a unique platform to launch our ideas, systems and products. I am fiercely proud of this heritage and our brand.”*

**Keira Proctor**  
Managing Director

[www.proctorgroup.com](http://www.proctorgroup.com) | +44 (0) 1250 872261  
[contact@proctorgroup.com](mailto:contact@proctorgroup.com)

Revised July 2018

