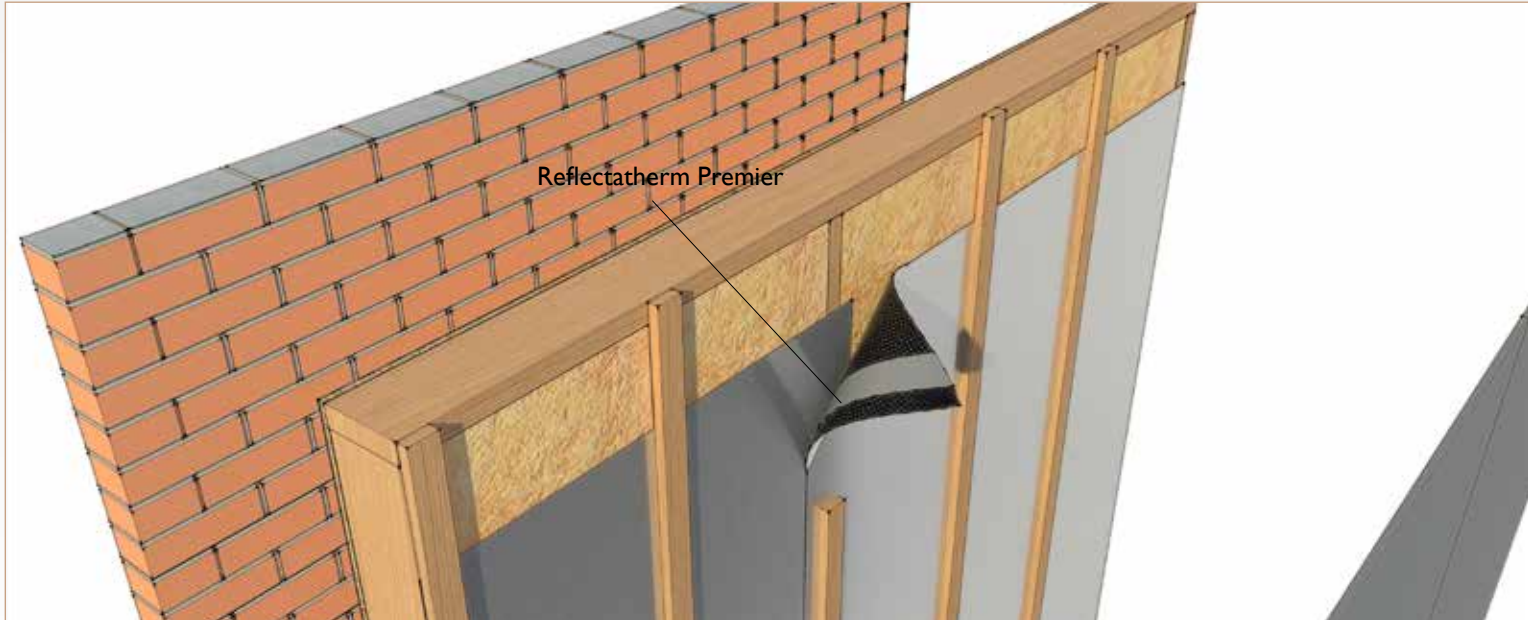


Reflectatherm Premier

REFLECTIVE VAPOUR CONTROL LAYER



Description

Reflectatherm Premier is a reflective vapour control layer with integrated tape for ease of installation. Reflectatherm Premier is for internal walls, ceilings and floors, specifically designed to enhance the thermal performance when placed on the warm side of the insulation.

The integrated tape, which is a key feature of Reflectatherm Premier, ensures an efficient, consistent, continuous and well sealed membrane to protect the structure from vapour and air movement.

The quick and efficient installation, utilising the integrated tape, reduces time and labour on site as well as increasing the quality of the joints in the membrane.



Key Benefits

- Integrated Tape reduces the requirement for additional tapes on site.
- Faster installation than using separate tapes.
- Reduction in labour and time costs.
- Improved adhesive bond between membrane and Integrated Tape.
- Improved Vapour Resistance due to Integrated Tape.
- R value of 0.78 m²K/W when used with a minimum 19mm service cavity.
- High vapour resistance.
- Improved airtightness.
- Creates service void.
- Creates an unbroken vapour control layer.
- Sd Value of 150m.
- Vapour Resistance 750 MNs/g.
- Help meets the requirements of the Part L in England and Wales, Section 6 in Scotland.

Reflectatherm Premier

Physical Properties

Property	Test Method	Mean Results	
Roll Size	n/a	1.5m x 50m	
Base Membrane			
Mass per unit area	EN 1849-2	150g/m ²	
Reaction to Fire	EN 11925-2	Class E*	
Water vapour resistance Sd	EN 1931	150m	
Vapour resistance	EN 1931	750 MN/sg	
Water penetration	EN 1928	Class W1 (Before and After ageing)	
Tensile strength	EN 12311-2	MD 255N/50mm (-60N)	CD 200N/50mm (-50N)
Elongation	EN 12311-1	MD 59% (-20%)	CD 70% (-20%)
Tear resistance	EN 12310-1	MD 164N (-55N)	CD 157N (-55N)
Flexibility at low temperature	EN 1109	No cracking at temperature minus 40°C	
Emissivity	BS EN 15976:2011	0.04	
Tape			
Adhesive	UV stabilised pressure sensitive		
Release Liner	60mm wide PET film		
Width of adhesive coating	50mm		
Installation Temperature Range	1°C to 85°C		
Bonded Product Temperature Range	-30°C to +85°C		

*When tested to EN 11925-2 over a rock wool substrate

U Value - Performance Ready Reckoner

Stud	89mm					95mm					115mm					140mm					145mm				
Insulation k Value	0.040	0.037	0.035	0.032	0.022*	0.040	0.037	0.035	0.032	0.022*	0.040	0.037	0.035	0.032	0.022*	0.040	0.037	0.035	0.032	0.022*	0.040	0.037	0.035	0.032	0.022*
Reflectashield TF	0.31	0.30	0.30	0.29	0.24	0.30	0.29	0.29	0.28	0.24	0.27	0.26	0.26	0.25	0.21	0.24	0.23	0.23	0.22	0.19	0.24	0.23	0.22	0.21	0.18
Reflectatherm Plus	0.33	0.32	0.31	0.30	0.25	0.32	0.31	0.30	0.29	0.24	0.28	0.27	0.27	0.23	0.21	0.25	0.24	0.23	0.22	0.19	0.24	0.23	0.23	0.22	0.18
Reflectashield TF & Reflectatherm Plus	0.27	0.26	0.26	0.25	0.22	0.26	0.26	0.24	0.24	0.21	0.24	0.23	0.23	0.22	0.19	0.21	0.21	0.20	0.19	0.16	0.21	0.20	0.20	0.19	0.16

■ 0.30 or above
 ■ 0.23 - 0.29
 ■ 0.22 or less

*When utilising rigid insulation boards between studs, accommodation for services should be considered. The above calculations are based on fully filling the stud with insulation and the provision of a service cavity.

Revised June 2018

