

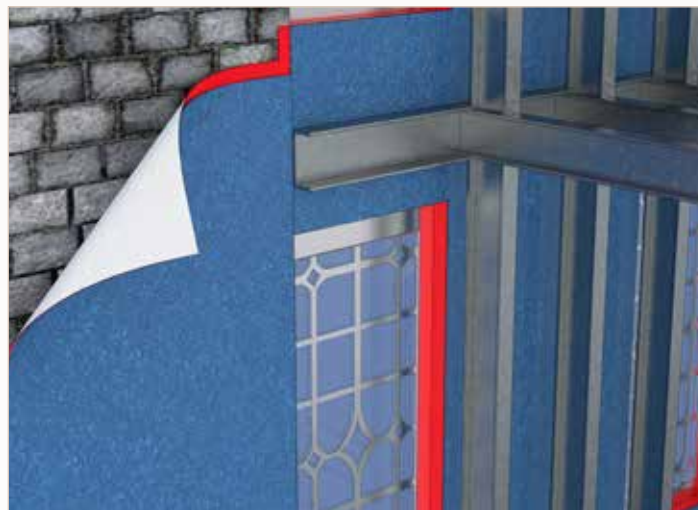
# Wraptherm®

## THERMAL INSULATION

### OVERVIEW

Wraptherm is a composite comprising 10mm Spacetherm Insulation blanket bonded to the face of Wraptite vapour permeable, airtight self-adhesive membrane. Use of Wraptherm provides improved airtightness levels combined with a reduction in thermal bridging. Wraptherm was developed for use in the refurbishment of existing buildings where there was a requirement to enhance both the thermal and airtightness performance of the building. Wraptherm can be applied to the internal face of the existing façade, providing a vapour neutral yet airtight layer; fully self-adhered to the substrate layer with the added benefit of a 10mm thick layer of high thermal performance Spacetherm insulation. Over this airtight/thermal composite framing can be installed with the cold bridging being reduced thanks to the Spacetherm layer. Additional thermal insulation can be included within the frame to meet the u values required for the refurbishment.

The offset nature of the Spacetherm insulation layer, over the Wraptite backing, allows robust sealing of the joints in the panel to ensure the continuity, integrity and robustness of the airtight layer.



### KEY FEATURES

- Single product airtightness and thermal bridging solution
- Ideal for Refurbishment and Façade Retention projects
- Water resistant yet vapour permeable membrane
- Leading Airtightness performance
- Reduces thermal bridging
- Continuous airtightness seal
- Tested low vapour resistance

PHYSICAL PROPERTIES	RESULT
Coverage	2400mm x 1200mm or 1200mm x 1200mm
Nominal Thickness	11.5mm
Weight	2.40kg/m <sup>2</sup> or 1.2 kg/m <sup>2</sup>
Water Vapour Resistance Sd	0.101m (BS EN 12086)
Water Vapour Diffusion $\mu$	8.806 (BS EN 12086)
Thermal Resistance	0.667 m <sup>2</sup> K/W (Insulation - membrane negligible)



Download a Spacetherm brochure from our website...

[www.proctorgroup.com](http://www.proctorgroup.com)

contact@proctorgroup.com | +44 (0) 1250 872261

Issued January 2019

