

CONTRACT FLOORING ACCESSORIES FOR  
EDUCATION ENVIRONMENTS  
2021

SECTOR GUIDE



# COMPANY INFORMATION

Quantum Flooring Solutions is a name you can trust. It is a leader in the flooring accessories market and offers a complete range of products that help to make stairs safe (Stair Nosings and Edgings), give a clean finish to floors at wall junctions (Skirtings and Cappings), cover for neat joints in floorcoverings (Trims, Edgings and Transitions) and keep entrances safe and clean (Matting).

## ACCREDITED:

### ISO14001

A commitment to environmental protection.



### ISO9001

A commitment to continually improve the manufacturing process.



## SIMPLE SPECIFICATION:

### bimstore

A range of Quantum Flooring Solutions' products have BIM objects that can be found in the bimstore.



### NBS Source

All products can be specified through NBS Source.



### SpecifiedBy

All products can be specified through SpecifiedBy.



## MEMBER OF:

### CFA

Membership of the only trade body representing the contract flooring market.



### MPBA

Membership of the only trade body representing the Modular and Portable Building industry.



## AND OFFERS:

### A 10 year warranty

Providing peace of mind for your projects, subject to project application and correct maintenance.



### Free RIBA CPDs

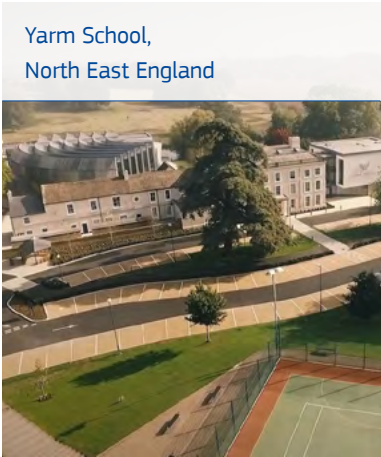
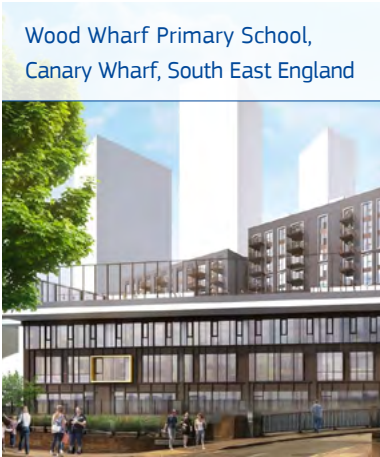
Learn how to correctly specify Stair Nosings, Flooring Accessories and Entrance Matting with market leading CPDs.



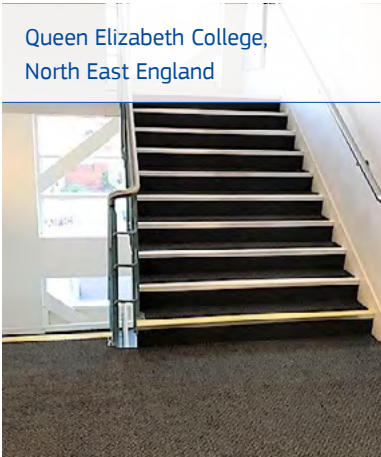
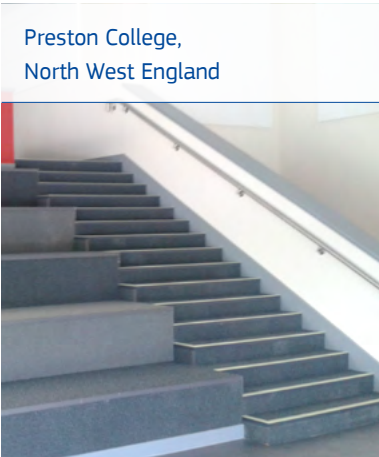
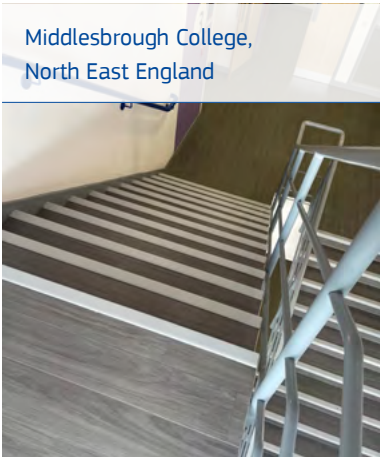
# SECTOR KNOWLEDGE

Below are a few projects that Quantum Flooring Solutions products have been used in over recent years. Products used include stair nosings, entrance matting, accessories and flooring transitions. To see the complete range of flooring accessory products visit [quantumflooring.co.uk](http://quantumflooring.co.uk).

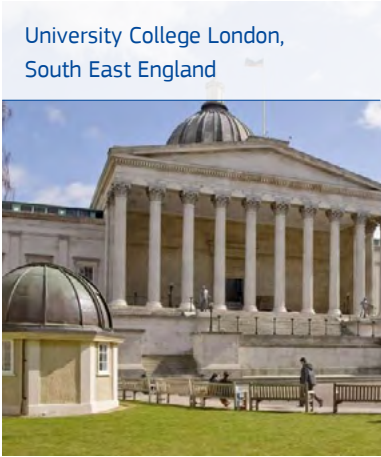
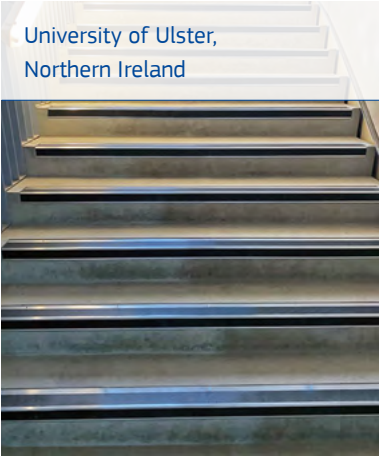
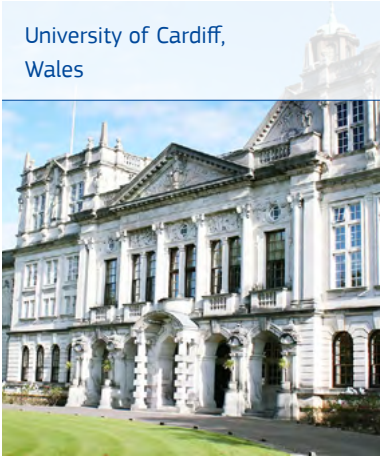
## PRIMARY & SECONDARY SCHOOLS



## COLLEGES

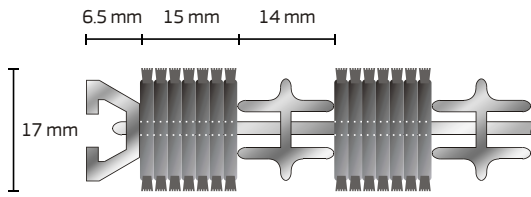


## UNIVERSITIES



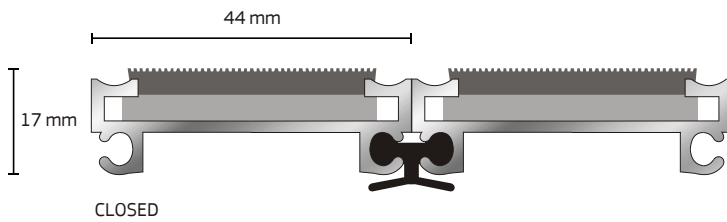
# PRODUCTS

## ENTRANCE MATTING



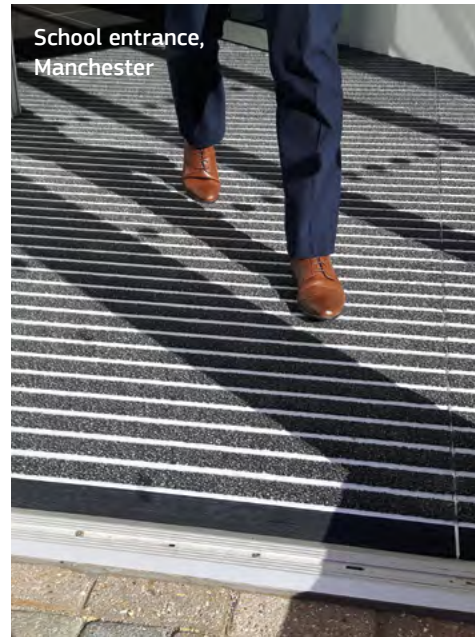
**Q-GUARD HIGH TRAFFIC MATTING**

For internal or external use.



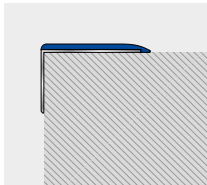
**Q-CONNECT MATTING**

For internal or external use.



- |  |               |              |             |              |                   |                  |                 |                  |   |              |        |             |         |        |            |       |        |        |         |                               |         |        |                                       |            |        |
|--|---------------|--------------|-------------|--------------|-------------------|------------------|-----------------|------------------|---|--------------|--------|-------------|---------|--------|------------|-------|--------|--------|---------|-------------------------------|---------|--------|---------------------------------------|------------|--------|
| Q-GRID,<br>Q-CONNECT,<br>Q-TILE, Q-CLICK,<br>Q-SECONDARY | ● Solid Black | ● Solid Blue | ● Solid Red | ● Solid Grey | ● Patterned Black | ● Patterned Blue | ● Patterned Red | ● Patterned Grey | Q-FIBRE<br>INTERNAL -<br>Needle punch<br>fibre bonded rib | ● Anthracite | ● Blue | ● Blueberry | ● Green | ● Grey | ● Burgundy | ● Red | ● Teal | ● Jade | ● Beige | Q-GUARD, Q-GRID,<br>Q-CONNECT | ● Black | ● Grey | Q-GUARD<br>INTERNAL -<br>Rubber Nylon | ● Charcoal | ● Grey |
| INTERNAL -<br>Tufted Nylon                               |               |              |             |              |                   |                  |                 |                  |   |              |        |             |         |        |            |       |        |        |         | EXTERNAL -<br>Rubber Rib      |         |        |                                       |            |        |

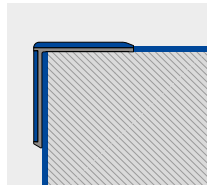
## STAIR NOSINGS



**QR-SF125R**

Slenderline

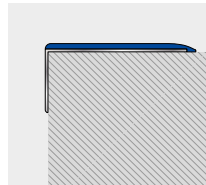
For concrete /  
no floorcovering  
0mm.



**QRd-SF153**

Slenderline Duo

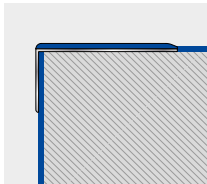
For vinyl / resilient  
floorcovering  
2-3.5mm.



**QR-SFWR**

Slenderline Wide

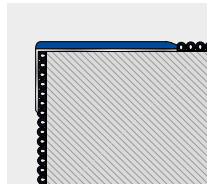
For concrete /  
no floorcovering  
0mm.



**QR-SFW**

Slenderline Wide

For vinyl / resilient  
floorcovering  
2-3.5mm.



**QR-HFW**

Heavy Duty Wide

For carpet / carpet tile  
3.5-9mm.

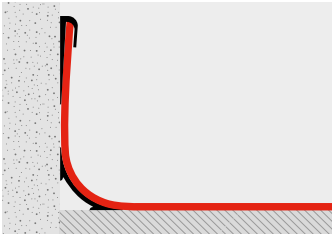


Secondary school,  
Scottish Highlands

- |                                   |          |         |          |        |             |           |          |           |         |         |              |        |              |        |             |              |         |       |        |       |        |          |         |          |         |
|-----------------------------------|----------|---------|----------|--------|-------------|-----------|----------|-----------|---------|---------|--------------|--------|--------------|--------|-------------|--------------|---------|-------|--------|-------|--------|----------|---------|----------|---------|
| STAIR NOSING<br>STANDARD<br>TREAD | ● Claret | ● Black | ● Rustic | ● Peat | ● Dark Blue | ● Regency | ● Spruce | ● Granite | ● Poppy | ● Flint | ● Royal Blue | ● Fawn | ● Light Grey | ● Jade | ● Tangerine | ● Polar Grey | ● Ivory | ● Sky | ● Lime | ● Sun | ● Mist | ● Yellow | ● Photo | ● Desert | ● White |
|-----------------------------------|----------|---------|----------|--------|-------------|-----------|----------|-----------|---------|---------|--------------|--------|--------------|--------|-------------|--------------|---------|-------|--------|-------|--------|----------|---------|----------|---------|

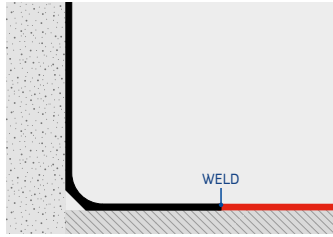
# PRODUCTS

## ACCESSORIES



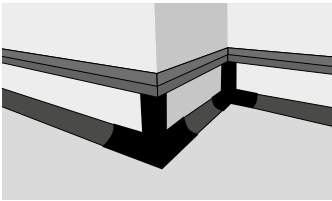
### CAPPING STRIPS & COVE FORMERS

To allow vinyl floorcovering to continue up the wall and finish the edge.



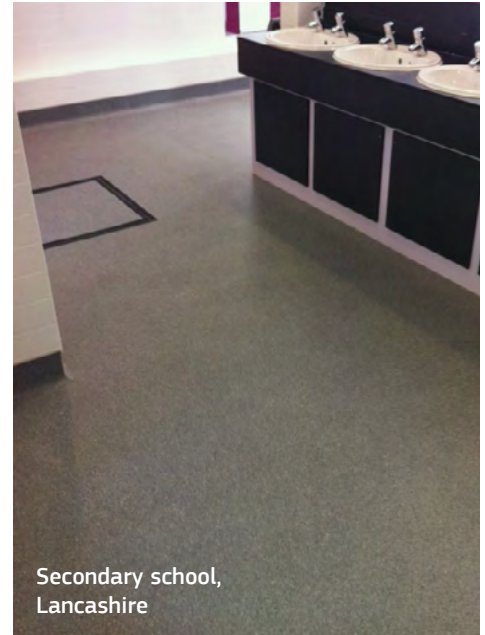
### SET-IN SKIRTING

To cover the join between floor and wall, with a sealed, welded joint to the vinyl or lino flooring material.



### CCFM1 & CCFM2 FLOORMITRES

Internal or external corners to make the fitting of vinyl around corners easier, quicker and smoother.

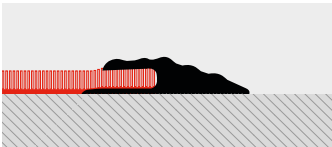


Secondary school, Lancashire

SKIRTINGS & CAPPING STRIPS COLOURS

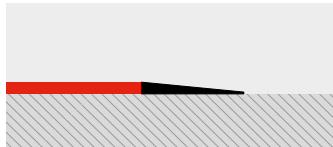
- Black
- Dark Brown
- Regency
- Graphite
- Charcoal
- Boulder
- Cloud Grey
- Caramel
- Platinum Grey
- Ivory
- White

## TRANSITIONS



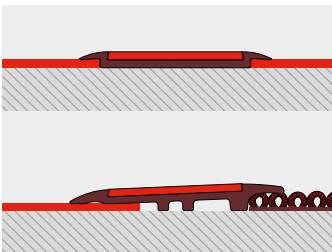
### FLOOR TRIMS

To cover floorcovering edges to reduce the risk of tripping & help prevent damage to flooring material.



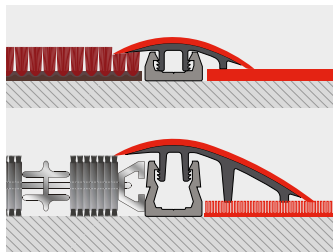
### PVC DIMINISHING STRIPS

Creates bevelled edged finish to flooring to protect damage to flooring at junction.



### PVC TRANSITION STRIPS

uPVC channel with separate tread both available in a range of colours.



### TOPCLIP

A two-piece floor trim system to cover joins between all gauges of floorcoverings, with tops available in a wide range of slip-resistant colours.



School library, London

RAMP TRIMS, DIMINISHING STRIPS & FLOOR TRIMS

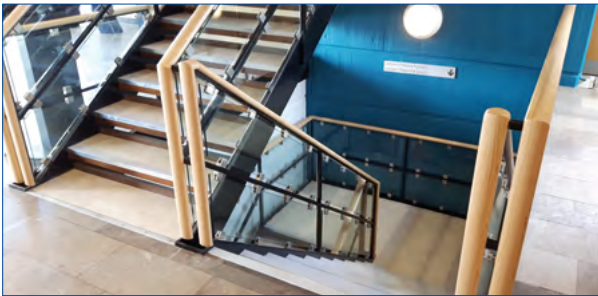
- Black
- Dark Brown
- Charcoal
- Light Grey
- White

DEMENTIA FRIENDLY TRANSITIONS (INFILL), TOPCLIP (TOPS) & COVER JOINTS

- Claret
- Black
- Rustic
- Peat
- Dark Blue
- Regency
- Spruce
- Granite
- Poppy
- Flint
- Royal Blue
- Fawn
- Light Grey
- Jade
- Tangerine
- Polar Grey
- Ivory
- Sky
- Lime
- Sun
- Mist
- Yellow
- Desert
- White

# SERVICES

Quantum Flooring products have industry-leading guarantees, so you know your installation will last. They are also recyclable.



## SITE SURVEY VISITS:

Need help on site? Arrange a site survey with Quantum Flooring for free.



## MEASURE & CUTS SERVICE:

Available for all Quantum Flooring Stair Nosings and Entrance Matting.



## SUPPLY & FIT SERVICE:

Available for all Quantum Flooring Entrance Matting.



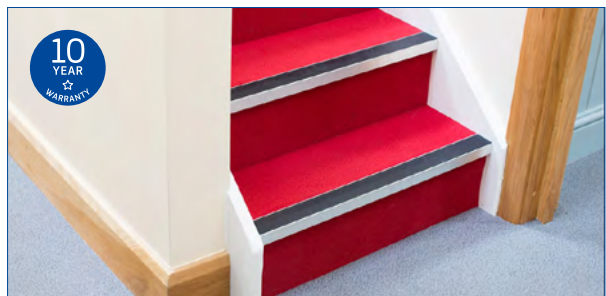
## TECHNICAL PRODUCT DATA SHEETS:

All products have both product data sheets and safety data sheets available, easily accessible via [quantumflooring.co.uk](http://quantumflooring.co.uk).



## TECHNICAL ADVICE:

A dedicated technical support email is available: [technical@quantum-ps.co.uk](mailto:technical@quantum-ps.co.uk).



## 10-YEAR PRODUCT WARRANTIES:

For extra peace of mind Quantum Flooring offer 10 year project product warranties – subject to project registration.

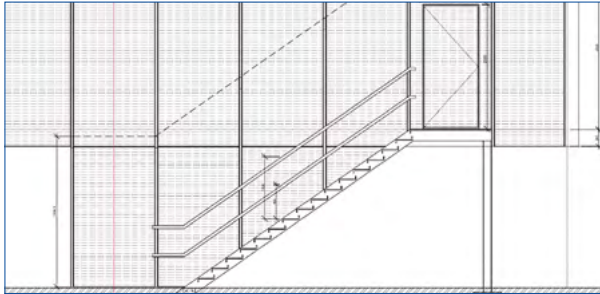
# SUPPORT

Quantum Flooring offer industry leading support, so you know you'll be able to get the correct product and information for your project. Quantum Flooring products help to meet Building Regulations, create safe environments and reduce the risk of slips, trips and falls.



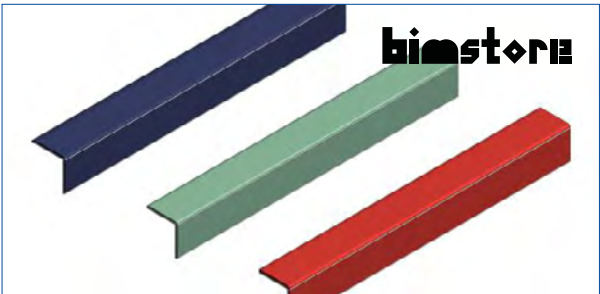
### CPD:

Learn how to correctly specify safe stairs and safe entrances with market-leading RIBA CPDs.



### SPECIFICATION DETAILS:

All products can be specified through both NBS Source & SpecifiedBy.



### BIM OBJECTS:

A range of Quantum Flooring Solutions' products have BIM objects that can be found in both the National BIM Library & BIMStore.



### SPECIFICATION SUPPORT:

Quantum Flooring is a one stop shop for all contract flooring accessories.

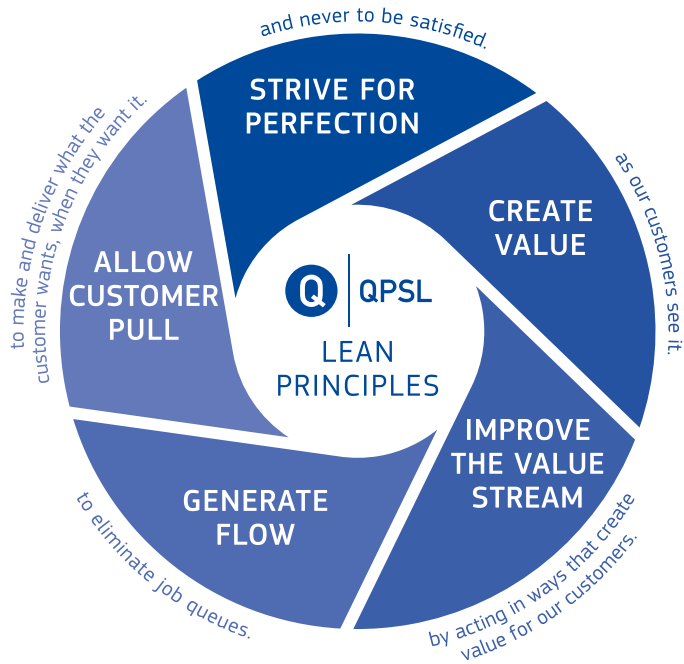


### INSTALLATION & CLEANING GUIDES:

Both PDF and video fitting and cleaning guides are available for all Quantum Flooring products, meaning contractors can access step by step fitting guides and quickly watch fitting and cleaning videos.

**NEXT STEPS:**  
Visit [quantumflooring.co.uk](http://quantumflooring.co.uk) or  
call **+44 (0) 161 627 4222**  
for more information and product  
selection support.

- STAIR NOSINGS
- ACCESSORIES
- TRANSITIONS & ENTRANCE MATTING



FOR SALES & TECHNICAL SUPPORT CALL:

+44 (0) 161 627 4222



Quantum Profile Systems Ltd  
 Salmon Fields, Royton, Oldham, OL2 6JG, UK  
 tel: +44 (0) 161 627 4222 fax: +44 (0) 161 627 4333  
 info@quantumflooring.co.uk quantumflooring.co.uk

@QuantumFlooring



PART OF QPSL LEAN, GREEN, SAFE & CLEAN

At QPSL we strive for continuous improvement in our environmental, health and safety management systems and in the environmental quality of our products, processes and services.

Details correct at time of publication but please visit the website for the latest product information.