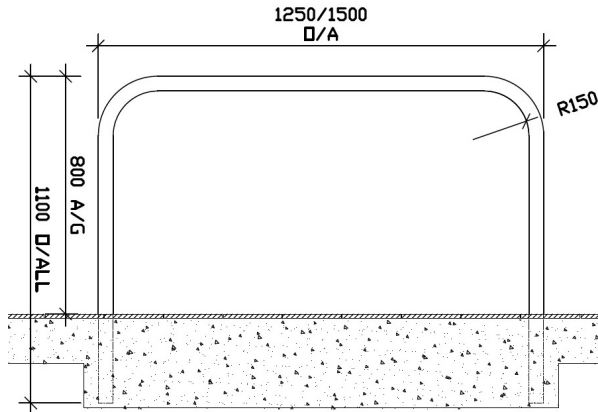


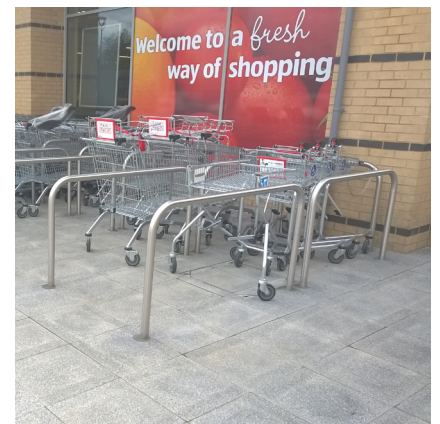


Hooped Trolley Rail 48mm Diameter Stainless Steel



Highly versatile, the stainless steel hooped perimeter barriers can be used to define trolley bays to store trolleys. Manufactured from Grade 304 stainless steel as standard with a brushed finish.

Available in a variety of heights and widths, and with extended legs for casting into concrete or with flange plates for bolting down.



<u>Part Number</u>	<u>Description, Height above ground x overall width</u>	<u>Weight (kg)</u>
138 205 100	800 x 1250, Concrete In	11kg
138 205 055	800 x 1250, Bolt Down	9kg
138 205 105	800 x 1500, Concrete In	12kg
138 205 060	800 x 1500, Bolt Down	9kg

Product details

- Concrete in 300mm (below ground)
- 6 bolts required per barrier (bolt down)
- Round flange plate – 120mm x 5mm

Installation & use

Bolt down to a suitable concrete surface.
Telescopic, removable and concrete in are supplied with welded fixing spikes to ensure firm ground anchorage into concrete.
Telescopic, removable and concrete in require a suitable excavated hole for installing into concrete.
Products are guaranteed for 12 months (if installed and used correctly).



www.autopa.co.uk
+44 (0)1788 550556

AUTOPA Limited
Cottage Leap, Rugby, Warwickshire CV21 3XP

