

Schoolscapes™

Schoolscapes™

Explore our Exciting Range of Projects and Ideas...



Thank you for looking...

Schoolscapes Limited

1 Dunveth Business Park, West Hill
Wadebridge, Cornwall, PL27 7FE

e: advice@schoolscapes.co.uk
t: 01208 816620 f: 01208 816642

LOOK INSIDE - Take the first step
in designing your new play scheme

www.schoolscapes.co.uk

www.schoolscapes.co.uk

ROSPA
Member



About

Schoolscapes are specialists in the Education Sector; we have been designing school playgrounds for over 20 years. Offering a full design and build service, we work with you every step of the way to ensure you get the play scheme that suits you, your children, your unique outdoor space and your budget.

This portfolio has been designed to provide you with inspiration for your own playground project. It will also show you some of the more bespoke solutions we can provide. We have included a varied selection of our projects covering all aspects of education and play from a storytelling area for Early Years through to a Multi Use Sports Area for Key Stage 2.

When you are ready to start discussing your project please contact one of our Project Consultants on 01208 816620. They can guide you through the process to create the perfect outdoor space for you and your children.

Gallions Primary School

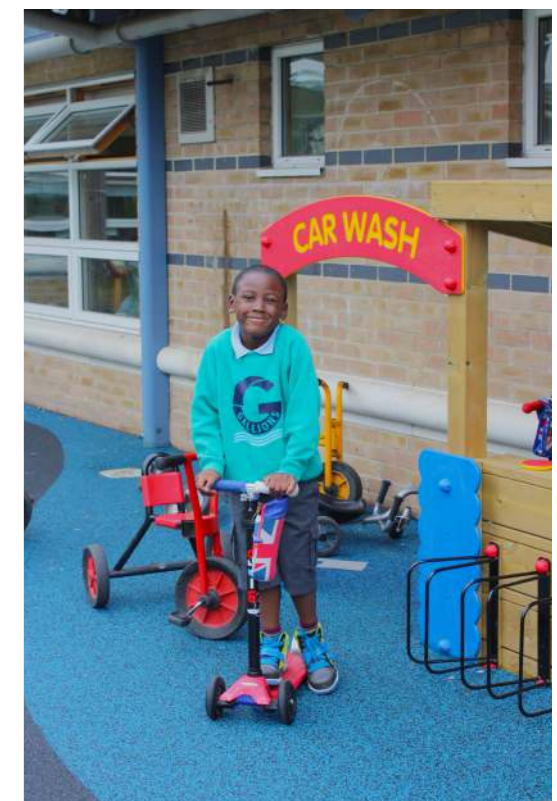
Project: This large East London primary school wanted to replace tired, old playground equipment in an area that required resurfacing. As this was for the Early Years playground, staff wanted a space that would engage the children in imaginative and physical play.

Seeing how much the children enjoyed riding their tricycles around the playground, we felt it would be beneficial to incorporate a trackway within the surfacing design. To add to the imaginative play value, artificial grass islands, a bridge and a garage were included. This allowed us to cover the existing damaged surface but also provide a fun and active play space.

The playground is now much brighter and more exciting. Opportunity for roleplay is encouraging the children to be more social, develop their interactive skills and language, and to be more physically active.

"Throughout the process, design to installation, Schoolscapes were great! The children now have a bright, engaging new playground to enjoy."

- R. Walstone (Deputy Headteacher)



"The impact on the whole community has been better than we could have expected."
- L. Nichols (Executive Headteacher)



Gayhurst Community School

Project: A Victorian, inner-city school with limited outdoor space required a full outside refurbishment providing separate areas for Early Years and Reception children and incorporating different areas of play and learning for the entire school. It was important to use planting solutions throughout, as the children wanted to be able to plant and grow their own vegetables within their urban environment.

Schoolscapes worked closely with the school and local community throughout the consultation period. After submitting an initial design we were selected from a number of contractors as the preferred playground provider. Our design team used creative ways to soften the urban setting such as soft surfacing, natural timbers and planting. Each space was designed to be physically diverse, with equipment at different levels, and a variety of surfaces, colours and vegetation. Curved pathways within the surfacing softened the rectangular, harsh edges and allowed each space to flow into the next. Children are encouraged to explore the space whilst feeling confident to move into the next area. Physical and imaginative play elements were designed to make best use of the space and to offer varied challenges to all ages.





*“Playtimes are now much calmer and the children engage in imaginative play using different play structures. At the end of the school day it’s hard to get the parents to take the children home as the school grounds are **better than the local park.**”*

- L. Nichols (Executive Headteacher)

To provide a space for outdoor education and imaginative learning, a garden area was created at the far end of one of the central playgrounds. Garden arches and planters were used to form natural boundaries and entry points, making the space feel more enclosed and secure. As the Reception and Early Years playgrounds were to remain independent, it was important to include all elements of learning and play within these spaces.

The whole school is delighted with the completed project. Everyone feels that being able to share their ideas at the beginning has made the new playground feel truly their own. The children and the kitchen staff enjoy being able to grow vegetables and herbs to enhance school meals. The whole space is now much more comfortable and aesthetically pleasing and provides an outstanding space for outdoor educational development.

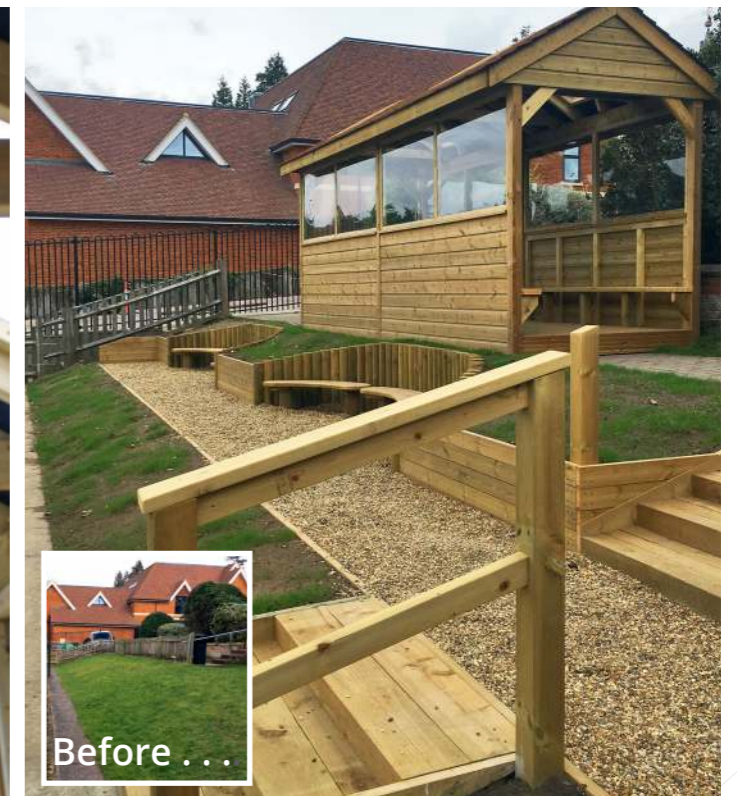


Reigate St. Mary's School

Project: Reigate St. Mary's School had a disused grass slope area that they wanted regenerating into a garden area with opportunities for quiet reflection as well as peer-to-peer interaction.

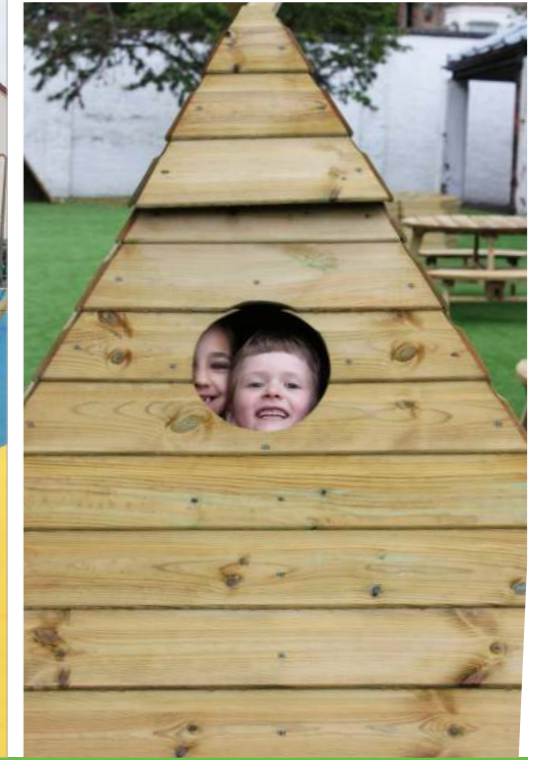
We created a tiered garden by installing planters into the slope with additional retaining timber. The seating pods now provide a quiet space for small groups of children to study, whilst the Timber Shelter is perfect for a whole class to enjoy a lesson outside. New timber steps and a gravel pathway have also improved access.

The new garden area looks beautiful and has thoroughly transformed the use of the space. Children are now able to enjoy partaking in outdoor education.



“From the initial planning stages through to on-site build, the Schoolscapes team were professional and delivered to a high standard.”

- L. Erratt (Bursar)



*"Engaging with the children and staff; they were able to produce exciting visuals from our aspirational wish list and broad ideas."
- M. J. Forber (Executive Headteacher)*

Somerville Primary School

Project: The School needed its new playground to have different areas and zones suitable for Key Stages 1 and 2. They wanted to incorporate physical play, an outdoor educational area, a performance area and softened landscapes.

Schoolscapes used different surfacing colours and textures to create visual boundaries between the various play zones. The Play Mound with artificial grass provides a softened landscape whilst creating a fun vantage point from the "look out" deck. Various items of physical play have been incorporated throughout the space setting varied challenges for the different age groups. The versatile Gazebo provides a social space, perfect for an outdoor classroom or performance area.

The new playground has been hailed as outstanding. It is now being used to showcase excellent play provision to other schools in the surrounding area. The playground is now much more colourful and offers children both a secure relaxing space and an exciting, energetic play space.

*"Schoolscapes have created what is considered by all to be a visually enhancing, **bespoke, adventurous**, yet safe playground, central to our children's enjoyment throughout the whole school day."*

- M. J. Forber (Executive Headteacher)



Awbridge Primary School

Project: This rural primary school required the development of their large Early Years playground to allow for free-flow provision from the classroom directly into the outdoor area, with some protection from the wind.

Installing full timber fence panels with bubble windows, we developed a smaller primary zone designed to encourage mark making and phonics. In the larger area, we incorporated imaginative and creative play with the use of roleplay huts, water play and a storytelling area.

Children are now able to move freely between the classroom and the playground, and feel more confident in their surroundings. They have enhanced opportunities for playing and exploring as well as for active learning.

"We were especially impressed with your vision at the start of the project - your input was invaluable."

- L. Bate (Business Manager)



The Park Mawgan Porth

Project: A luxury seaside holiday resort required an exciting new play area suitable for a varied age group.

The sea-themed Adventure Tower is designed to suit a multitude of users with its multi-height decks. It allows children of all ages to play together in unison. The Hexagonal Climbing Frame compliments the tower, providing additional fun and challenge.

Now that children of all ages are able to play together, feedback received from guests has been incredibly positive.

"Schoolscapes understood our needs and most importantly our budget."

- H. Hipkins (Finance Director)





Tregolls Primary School

Project: Tregolls Primary School had a large, open play area that was dominated by football and was stopping other children engaging in different activities. They wanted to create a focused sports area that would also help with combating behavioural issues.

This project was designed to be completed in multiple phases as funding needed to be accessed. The double court system allows specific space for multi sports, games and exercise. The 3G pitch provides a safe, cushioned surface that is suitable in all weathers. Schoolsapes were not only able to design and build this project, but also assisted the school with its successful funding applications.

The addition of the designated sports areas has been invaluable to the school. Not only has it encouraged more children to partake in sports, but it has also decreased behavioural issues and increased concentration during lessons. The play area was noted by Ofsted as one of the school's outstanding features.



*"We have always found Schoolsapes to be very **professional**. They complete **complex projects** on time and on budget with the **minimum amount of disruption**."*

- M. Middlemore (Headteacher)



Delius Special School



Project: Delius Special School offers specialist provision for children with a range of complex medical, physical, emotional and learning difficulties. They required a space that would encourage the children to engage in outdoor education and performance.

We incorporated two different styles of outdoor classroom to provide an inclusive educational environment. The large Gazebo is open, allowing natural light in. This encourages children to engage in social interaction and creativity. The smaller Gazebo is more enclosed, providing a space that feels safe and secure and is perfect for small group work. The musical area, with brightly coloured themed wetpour, allows children to develop their confidence in performance and improve their coordination. Incorporating different surfaces throughout the area provides an additional sensory experience.



"Schoolscapes really went out of their way to help us."
- R. Meredith (Business Manager)



Sythwood Primary School

Project: Regular client Sythwood Primary School sought our advice to develop a new physical play provision specifically for their Key Stage 2 children.

Our design team worked alongside the children's School Council to select equipment that would provide different levels of physical challenge. The main focus was to develop both upper body and core strength. Safety surfacing was then installed around all of the equipment, allowing the space to be used safely all year around, whatever the weather.

Feedback from the children to the Deputy Headteacher was amazing. Providing the children with physical play has not only developed their fitness levels but has also aided their concentration.



"It was really obvious to see them testing themselves on which pieces they were able to navigate, adapt their movements and assess risks for themselves. The progression for physical development was clear to see, and the school are excited by the opportunities for outdoor learning that the entire space offers."

- C. Tompkins (Headteacher)

Tor Bridge Primary School

Project: When the school was built in 2012, the outside area was left very dull and bare. It required a designated sports area and space for activity and adventure play, outdoor performance and education.

Schoolscapes have worked closely with the school on a long-term development plan for the outdoor space. This allowed us to incorporate the ideas of the School Council into the design and work within the finances available at different points of the cycle. The most recent phase of the project was specifically aimed at providing an adventure play space. This was achieved by combining adventurous physical challenge with a bike and tricycle track, and areas for den building, imaginative play, storytelling, outdoor theatre and teaching.

The outdoor space now offers multiple opportunities for physical development, open-air learning and play. It has enabled the school to utilise the natural landscape and develop new ways of encouraging children to participate in physical exercise and social interaction.





*"Working with Schoolscapes has been a refreshing experience."
- N. Fulcher (Business Manager)*

Hobbs Hill Wood Primary School

Project: The existing bare and unexciting tarmac playground required an injection of colour and physical play to develop upper body strength.

A personalised, colourful Beacon Quad Tower was the perfect physical challenge. The connecting components offer challenges of varied difficulty assisting in the development of upper body and core strength. To add an additional splash of colour to the area, bright blue safety surfacing was installed.

The school were elated with their new play space! It has been a fantastic aid for physical development and provides a colourful focal point. Schoolscapes have since been asked to undertake additional projects.



Lowerfields Primary School

Project: A long and rectangular Early Years tarmac playground, that was very uninspiring, required both physical and imaginative play equipment.

The playground was transformed with a variety of play opportunities and a mixture of soft surfaces. The climbing frames provide physical challenge that aids in the development of gross motor skills. The landscaped area includes a Mud Kitchen, which allows both imaginative and creative play within a self-contained space. We have incorporated elements of nonprescribed play to encourage the children to develop their imagination.

The area is now much more exciting and has allowed the children to develop confidence and play cooperatively.

"The A-frame climbers gave the children a challenge, the children seemed to impose their own restrictions and as the year went on we saw the difference in confidence and ability."

- J. Barraclough (Early Years Coordinator)



Aldwickbury Primary School

Project: Aldwickbury Primary School wanted to enhance their play facilities for the pre-preparatory school playground. Having previously worked with Schoolscapes, they sought our advice for a project that would encourage creative and imaginative play and house as many activities as possible within the playground's confined space.

The Clipper Play Ship was the perfect solution for this project as it incorporates lots of activities and challenges whilst providing imaginative play. The Gazebo is very multi-functional and can be used for drama, music, play, social interaction and outdoor lessons.



"We were extremely happy with the thorough planning, careful designing and the installation."

- C. Hales (Business Manager)



"The children are really happy, engaged and so look forward to their time slot on the equipment!"
- H. Gaffney (Bursar)

Wimbledon Park Primary School

Project: Wimbledon Park Primary School had a large playspace with a mismatch of tired equipment in need of replacing. The loose bark surfacing was also becoming an issue for the school as it had turned to mud. It was important for us to include a variety of activities, from imaginative play areas to challenging climbing equipment.

Working alongside the school, we created an engaging play area which encourages children to make use of the whole space. Different levels of challenge appeal to varying abilities and age groups. Climbing, sliding and active play are counterbalanced perfectly with the Jungle Play Den and Teepee, which are ideal for providing spaces for imagination and creativity. The Resin Bound Rubber Bark provides a suitable safety surface and allows for all-weather play.

The school is delighted with the transformation of the playground. The children are extremely happy with their new varied play equipment, which appeals to both super climbers and children who prefer more ground-based fun. Since the project has been installed, the school has also seen a real improvement in social interaction between the children.



Gallery



Get in touch

Take the first step

You're in good hands! Schoolscapes have been successfully working with Schools across the UK for the past 20 years.



01208 816620

- ✓ We design, install and manage your project and you'll get an outdoor play area that is:
- ✓ Personalised: We will create a fun and educational playground that is bespoke to the needs of your school and pupils
- ✓ Curriculum led: Get a play area that will nurture key skills in every area of the national curriculum
- ✓ Safe & Robust: All our playgrounds are designed to meet the European Safety Standards: EN1176/7
- ✓ Outstanding quality: Capture the imaginations of your pupils through our high-quality play products
- ✓ Guaranteed to last: Once your playground is finished, we'll provide you with a reassuring guarantee of up to 20 years