

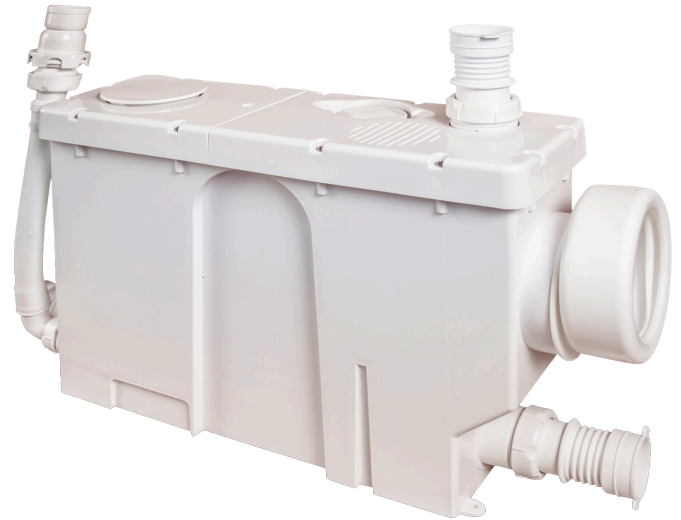
# WASTEFLO

## WC4C – Macerator

The Wasteflo WC4C macerator is ideal when transforming any area into a complete bathroom or en-suite.

The slimline design of the Wasteflo WC4C macerator is designed for installation out of sight behind a stud-partition or other enclosed space and is ideal for use with a back to wall or wallhung toilet.

An innovative watertight cassette unit enables easy removal, cleaning and maintenance of the working parts without having to remove the WC, cistern or pipework.

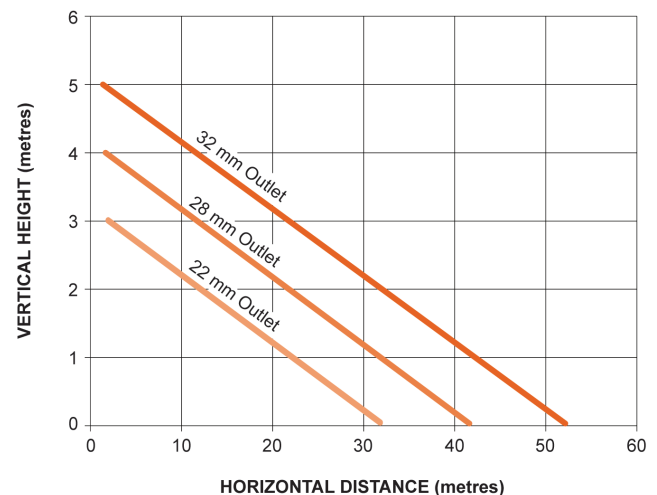


### Features

- 2 year guarantee
- Pumps up to 5 m vertically or 52 m horizontally
- Up to 90 litres per minute flow rate
- Easy access removable cassette system
- Slimline design
- Adjustable WC coupling and three 32 mm (1¼ ") inlets
- Outlet suitable for connection to 32 mm, 28 mm or 22 mm waste pipe
- Quiet operation
- Continuously rated
- Pre-wired with 1.5 metre power cable

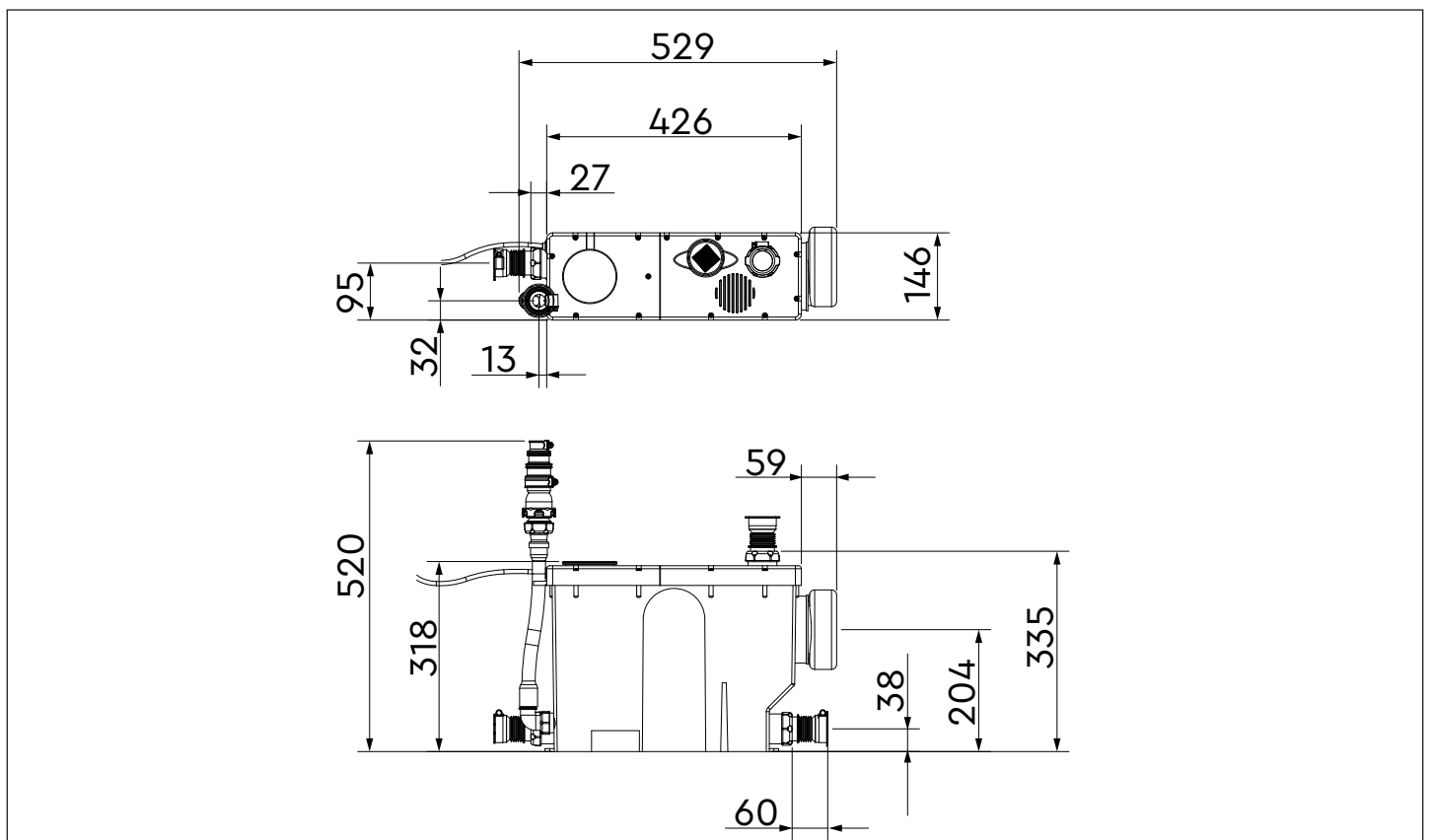
### Application

- Installing a wall-hung or back-to-wall WC, hand basin and shower in a basement where the appliances will be below the level of the main drain.
- Installing a wall-hung or back-to-wall WC, hand basin and shower in a location up to 52 m from the main drain.



Pump Model		WC4C 46653
General	Guarantee	2 years
	Approvals	CE
Features	Adjustable WC coupling	✓*
	Slimline design	✓
	Easy access cassette unit	✓
	Noise level	50 dB(A) (typical)
Material	Enclosure	Polypropylene
Performance	Maximum pumping distance (vertical)	5 metres
	Maximum pumping distance (horizontal)	52 metres
	Maximum flow	90 l/min
	Maximum ambient air temperature	40 °C
	Min / Max water temperature	Min 4 °C / Max 50 °C
Connections	WC	102 mm dia.
	Inlet(s)	40 mm (1½ ") dia.
	Outlet	32 mm, 28 mm, 22 mm waste pipe adaptor
Motor	Duty rating	Continuous (S1)
Electrical	Power supply / phase / frequency	230 V a.c. / 1 / 50 Hz
	Current (full load)	2.2 Amps
	Power consumption	500 Watts
	Fuse rating	5 Amps
	Power cable (pre-wired)	1.5 metres
Physical	Enclosure protection	IPX4
	Width	529 mm
	Depth	146 mm
	Depth behind pan	N/A
	Height (excluding hoses)	318 mm
	Weight (including fittings)	7.4 Kg

\* Side entry.



Stuart Turner Limited reserves the right to amend specifications without notice.