

# WASTEFLO

## LS5 – Lifting Station

The Wasteflo LS5 lifting station is ideal when you need to create a shower room, kitchen or utility room anywhere in your home or commercial building. A bath, shower, basin, sink, washing machine and dishwasher can all be connected.

The Wasteflo LS5 lifting station is designed with an innovative removable cassette system which houses the electrical and mechanical components. This cassette system allows for easy and clean access without having to remove any pipework or the appliance when servicing or maintaining the unit.

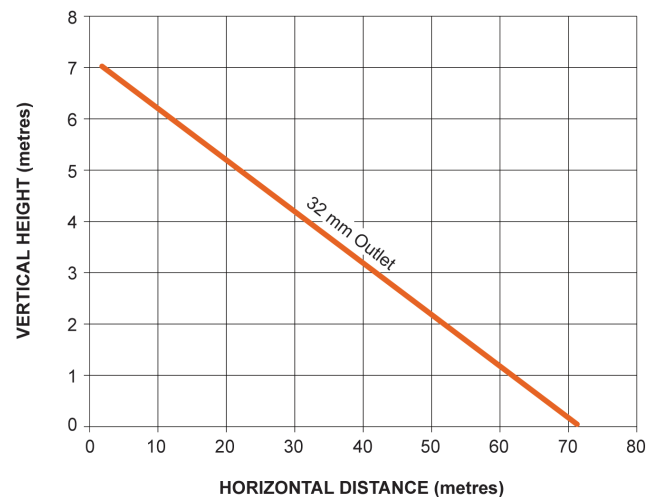


### Features

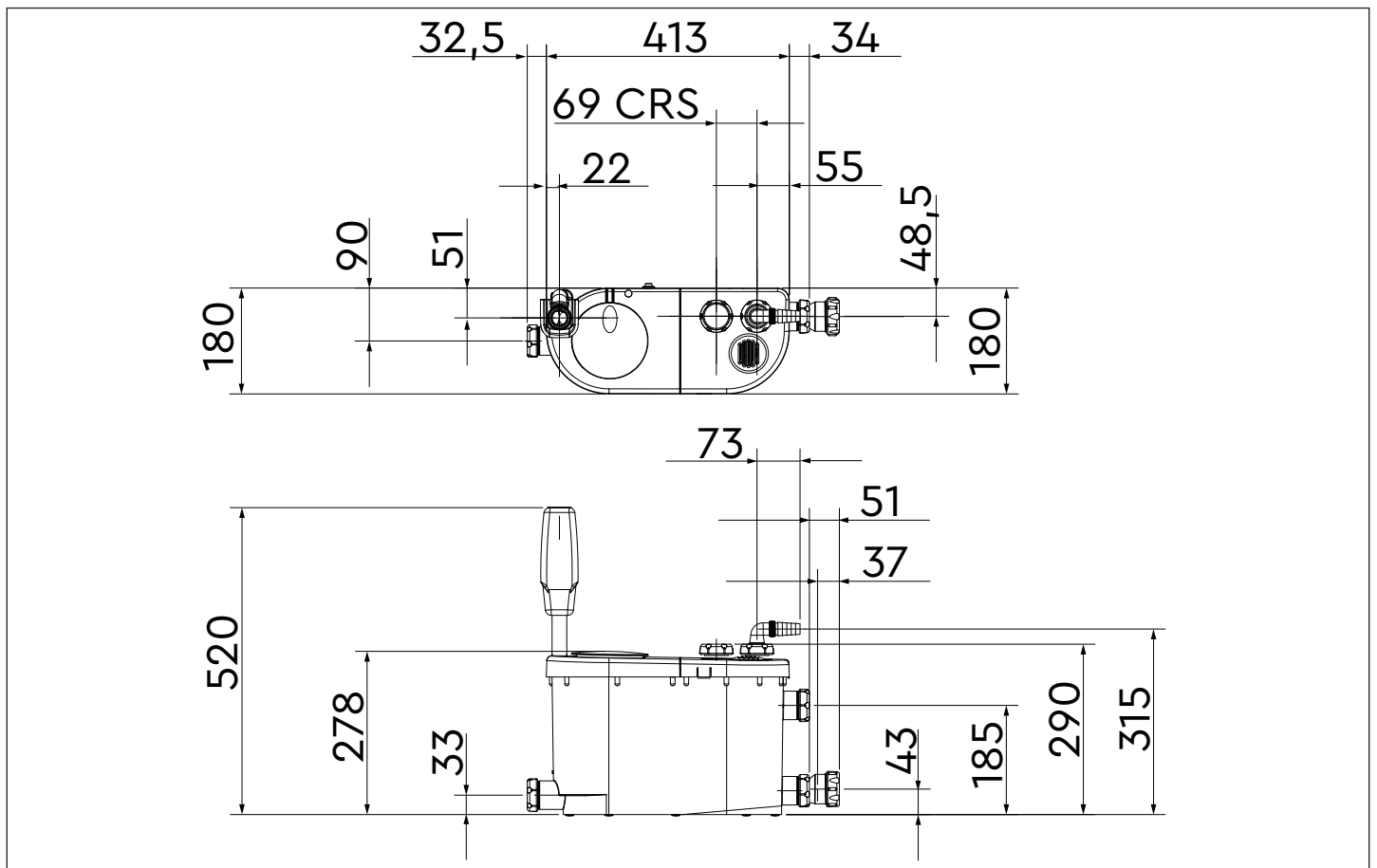
- 2 year guarantee
- Pumps up to 7 m vertically or 72 m horizontally
- Up to 120 litres per minute flow rate
- Easy access removable cassette system
- Compact design
- Two top inlets and three side inlets with integral non-return valves
- 32 mm (1¼ ") diameter waste outlet
- Quiet operation
- Continuously rated
- Pre-wired with 1.5 metre power cable

### Application

- Installing a kitchen, utility room or shower room in a basement where the appliances will be below the level of the main drain.
- Installing a kitchen, utility room or shower room in a location up to 72 m from the main drain.



Pump Model		LS5 46577
General	Guarantee	2 years
	Approvals	CE
Features	Slimline design	✓
	Noise level	50 dB(A) (typical)
Material	Enclosure	Polypropylene
Performance	Maximum pumping distance (vertical)	7 metres
	Maximum pumping distance (horizontal)	72 metres
	Maximum flow	120 l/min
	Maximum ambient air temperature	40 °C
	Min / Max water temperature	Min 4 °C / Max 50 °C (Continuous duty), Max 70 °C (washing machine)
Connections	Inlet(s)	32 mm (1¼ ") dia. (standard), 20 mm/G ¾ elbow connection (washing machine)
	Outlet	32 mm waste pipe adaptor
Motor	Duty rating	Continuous (S1)
Electrical	Power supply / phase / frequency	230 V a.c. / 1 / 50 Hz
	Current (full load)	2.0 Amps
	Power consumption	460 Watts
	Fuse rating	5 Amps
	Power cable (pre-wired)	1.5 metres
Physical	Enclosure protection	IPX4
	Width	413 mm
	Depth	180 mm
	Height (excluding hoses)	278 mm
	Weight (including fittings)	7.8 Kg



Stuart Turner Limited reserves the right to amend specifications without notice.