



Street Charge Signage

Signage Specifications - Vertical

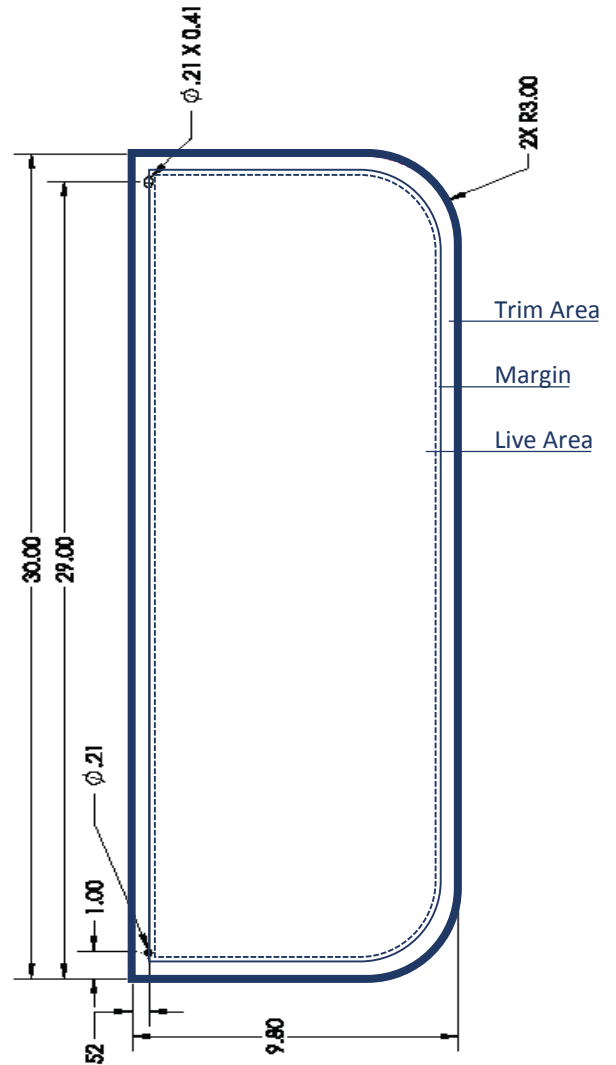
Sign size –
9.8" W x 30" H

Live area –
8.8" W x 29" H

Sign thickness – 6mm/7mm

Important notes:

- Highly recommended that logo/artwork is a vector format for best quality of outcome.
- Signage material can depend on how long the signage will be in use. Foam core is a cheap material for short periods of use but would not withstand a long period of time.





Street Charge Signage

Signage Specifications - Horizontal

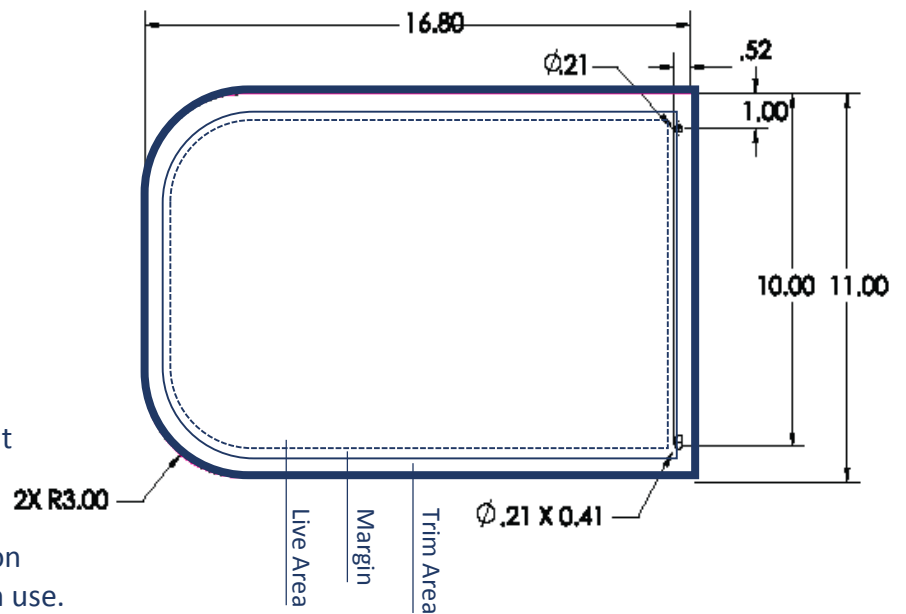
Sign size –
17" W x 11" H

Live area –
16" W x 10" H

Sign thickness – 6mm/7mm

Important notes:

- Highly recommended that logo/artwork is a vector format for best quality of outcome.
- Signage material can depend on how long the signage will be in use. Foam core is a cheap material for short periods of use but would not withstand a long period of time.





Signage Material (Optional)

Material Specification – Dibond®

The panel combines two 0.3 mm (6mm in total) aluminium surface layers with a polyethylene core and comes with a protective film on both sides. **Dibond®** stands out through extremely flat surfaces, very high resistance to weathering and corrosion and high stability.



Alloy - AlMg1

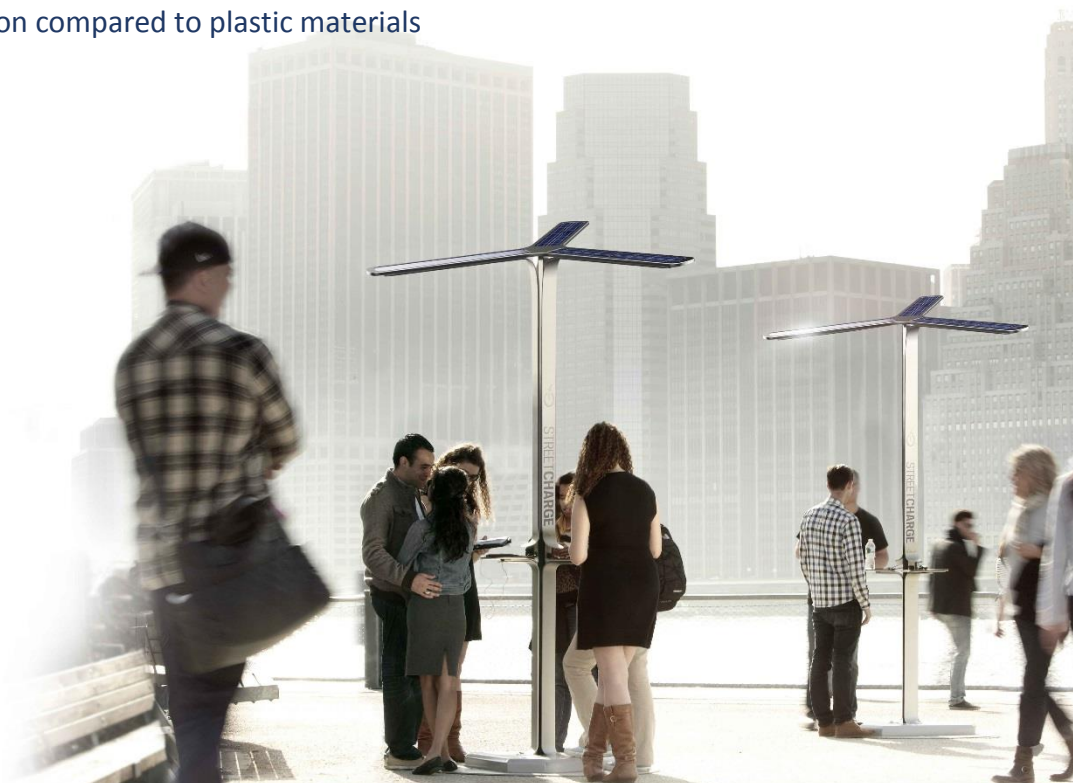
- **DIBOND®** is the only ACM for display applications with an AlMg1 alloy
- High corrosion resistance

Polyester coating

- Stove lacquered according to ECCA Standard in Singen
- Consistently high colour quality, trueness and colour thickness
- Absolutely flat surface
- No heavy metals in the lacquers
- Applicable for screen printing and direct-to-substrate digital printing

Polyethylene core

- UV - protection
- No delamination or warping due to low thermal expansion
- Optimized for long term outdoor use
- Low thermal expansion compared to plastic materials



environmental street furniture

