



LONDON
SWIMMING POOL
COMPANY

Outstanding Pools. Without Compromise.

020 8605 1255

www.londonswimmingpools.com

Introduction

Outstanding design. Superlative craftsmanship. First class customer service. This is what you can expect from London Swimming Pool Company (LSPC).

LSPC Contracting has been designing, building and refurbishing luxury swimming pools and spas for prestigious residences in London and the Home Counties for over 30 years. Highly skilled designers and engineers work closely with project architects, structural engineers, M&E consultants, interior designers and clients to create beautiful pools and spas, that work superbly and give years of pleasure. LSPC Contracting also designs, builds and refurbishes commercial pools for schools, hospitals and hotels.

LSPC undertakes everything from the design and build of the simplest luxury pool to highly complex projects including infinity edge, linear deck slot, standard deck level overflow and letterbox surface flow systems.

The design and build team brings the latest technology to pool design and installation including high efficiency and environmentally friendly heating systems, moving floors, water features, a wide selection of LED underwater lighting systems from specialist brand leaders such as Wibre and EVA Optic, and an array of pool and spa finishes from the likes of Stonegres, Bisazza and Waxman.

Engineering excellence results in outstanding swimming pool design, efficient and streamlined plantrooms – the result of detailed planning, high accuracy and outstanding teamwork.

LSPC Servicing provides regular and emergency servicing and maintenance of pools and spas, and specialises in the refurbishment of private and small scale commercial indoor and outdoor pools and spas.

A comprehensive range of services provided under one roof by London's premier swimming pool company.

With more than 50 awards for design excellence – including being awarded the accolade of SPATA Pool Contractor of the Year three times – you can trust LSPC to deliver on specification and on time.





SPATA Gold Award winning subterranean pool and entertainment space, Wimbledon, London

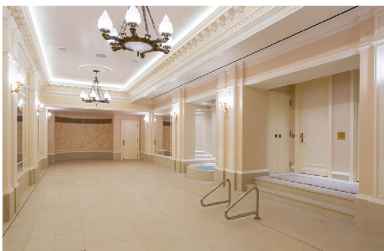
Moving Floor Pools

Moving Floor Pools Maximise Space

Many clients want a luxury pool but prefer not to dedicate a large area of their home exclusively to a pool. This dilemma is solved by choosing a pool with a moving floor, enabling the home owner to reclaim the space whenever they need it for non-aquatic activities. Adjustable moving floors are used on both indoor and outdoor pool installations. When the adjustable floor is raised to cover the pool, the swimming area is instantly transformed into a solid floor that can be used for a variety of social gatherings.

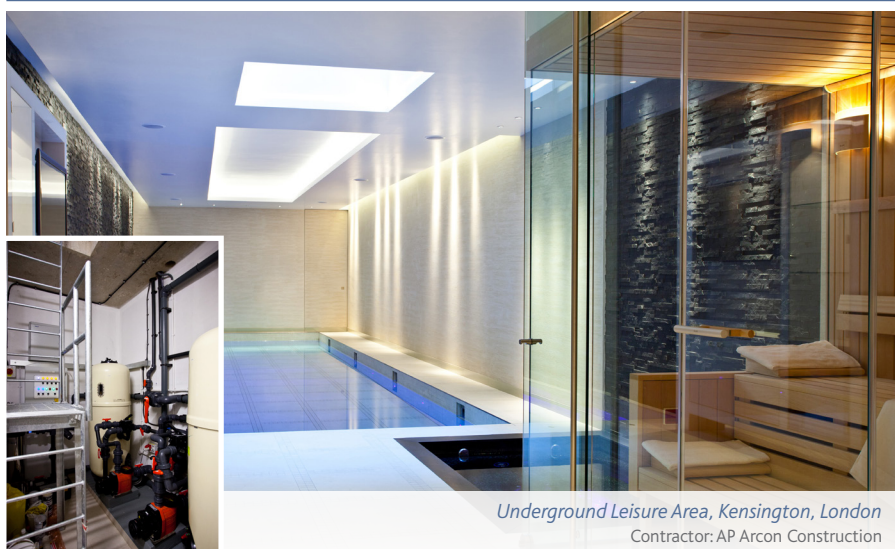
LSPC specialises in the design and build of pools with moving floors and offers floors from leading companies to satisfy all requirements. LSPC is an Authorised Hydrofloors Dealer, manufacturers of the advanced Hydrofloors Moveable Floor System.

A classic design featuring two magnificent Roman ends, this 15.8m x 3.2m metre pool has been built with the Hydrofloors Moveable Floor system, enabling the family to switch from swimming to entertaining up to 60 guests in a comfortable, cool environment. The moving floor can be elevated to whatever water level desired; from full to paddling depth. Raised to deck level, the floor provides a robust, attractive floor, transforming the room back to a social space.



Award winning moving floor pool, built with the advanced Hydrofloors Moveable Floor system

Main contractor, Janine Stone



Underground Leisure Area, Kensington, London

Contractor: AP Arcon Construction

Another SPATA award winner, this moving floor pool is installed in a private residence in Kensington, London. The pool is installed in a leisure area located on the third level below ground and required a 22 metre excavation. The installation combines the latest in technology to offer a comfortable, tranquil space for exercise, relaxation and entertainment when the floor is raised.

The moving floor can be set at different levels in the water, including at full depth for swimming, shallow for young children to play and splash about and completely raised to provide a large floor space for socialising. The ability to transform an area in this way is particularly useful in properties in the heart of London where space is often at a premium.

The understated internal pool finishes in shades of cream come to life via rows of contrasting white and colour changing underwater LED lights. A dry bonded black slate wall adds interest and texture along one side of the pool and is replicated on the opposite wall as a backdrop to the spa. The custom built spa features six hydrotherapy jets and six calf massage jets and is finished with black and silver Italian mosaic to match the leisure area's elegant colour scheme.



Stainless Steel Pools

Simply Stunning!

London Swimming Pool Company is now offering luxury stainless steel pools to private and commercial clients. Clients can choose either a bespoke pool to meet specific needs and preferences or one of the innovative Classic modular pools which can be built in just six weeks. These high-quality pools are brought to the UK through a unique collaboration with Berndorf Bäderbau, Europe's premier stainless steel pool manufacturer.



Berndorf Bäderbau – Wellnesshotel Jagdhof, Röhrnbach, Germany

Stainless steel pools are suitable for both modern and traditional architecture and blend perfectly with many different materials including acrylic and glass, to create a unique look and feel. The material produces beautiful and unusual light effects in the water.



Berndorf Bäderbau – Hotel Bialowiecki, Białowieża, Poland

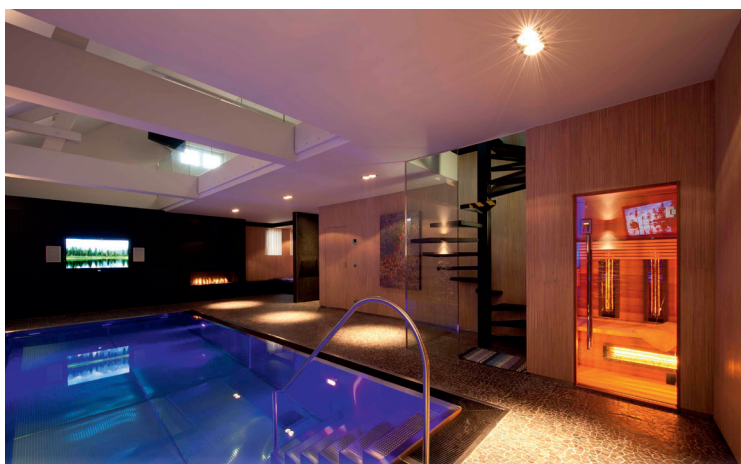


Stainless Steel Pools



Berndorf Bäderbau – Stainless Steel Private Pool, Bavaria, Germany

Photo: Matthias Malpricht



Berndorf Bäderbau – Stainless Steel Private Pool, Belgium

Stainless steel has inherent characteristics which make it ideal for swimming pool construction and these features are complemented by Berndorf Bäderbau's pioneering technology which enables LSPC to construct beautiful high-performance pools.

Stainless steel pool finishes provide maximum design flexibility, so can be built in both regular and unusual shapes. The material is considerably lighter in weight than conventional pools because it arrives pre-constructed as both a pool liner and finish. This means it is possible to build a pool in parts of a property where a heavier concrete pool is not feasible.

An outstanding feature of stainless steel pools is that they can be built faster than other types of luxury pools. Using the prefabricated stainless steel pool material and advanced technology, London Swimming Pool Company builds the pools in less time than it takes using conventional construction methods, allowing clients to have their pool faster. The client gains a stunning pool that is permanently watertight, extremely durable and easy to maintain.



Sleek Outdoor Stainless Steel Pool, Surrey
Design and build: London Swimming Pool Company

Indoor Pools - Tiled

This state-of-the-art pool is probably the most energy efficient private pool built in the UK. This 20 x 3 metre minimalist pool runs on a fraction of the cost of an indoor pool of equivalent size. It is housed in an insulated building that seals in heat and the roof is covered with photovoltaic panels, providing all the heat for the pool hall and the pool water which maintains a constant 28°C temperature.



Award winning energy efficient Pool, Somerset
Architectural design: Wolstenholme and Partners

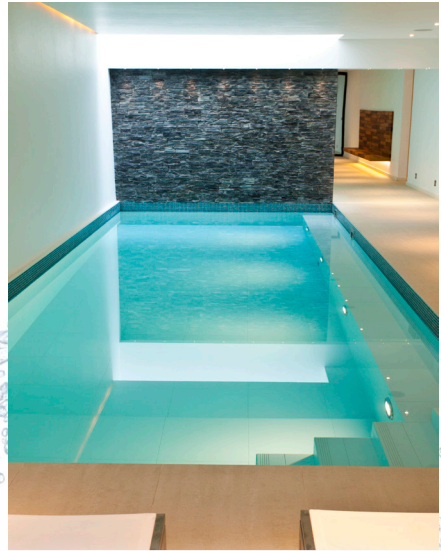


Futuristic plantroom
Heavy insulation of all pipes, pumps and filters retains heat

The pool features sleek lines with high quality stainless steel floor inlets that allow heated water to return to the pool, giving an even flow to the linear letter box surface draw system set 40mm below deck level.

The low energy consumption theme is carried through to the pool lighting with EVA Optic high efficient LED lighting.

A SPATA Silver Award winner, this minimalist design matches the contemporary interior of the re-built Chelsea residence. The overall emphasis is on light, with natural daylight entering from atria on both ends of the pool. Specialist halogen lighting is used throughout the pool area, along with mirrors, ensuring that this underground space feels anything but subterranean.



Minimalist Subterranean Pool, Chelsea, London
Architectural design: LAB Architects



An exquisite pool and spa features breathtaking finishes designed by Craig Bragdy Design.



Diamond Pool & Spa: Central London
Hydraulic design: BBS Technical Services;
Mosaic designer: Craig Bragdy Design

Indoor Pools - Tiled



This stunning ground floor integrated pool and space has won multiple design awards. The pool is 13.5m x 4.20m, with a 1.5m shallow end, falling to 2m at the deep end. The pool sports two neck-jet water cannons which create visually striking waterfalls. Steps on both sides of the spa lead into the pool. The 2.1m diameter spa accommodates five bathers, has an extended seatback and footwell – at seating level, the water depth is 0.5 metres. Multiple jets deliver stimulating and soothing massages via standard air/water mix jets.

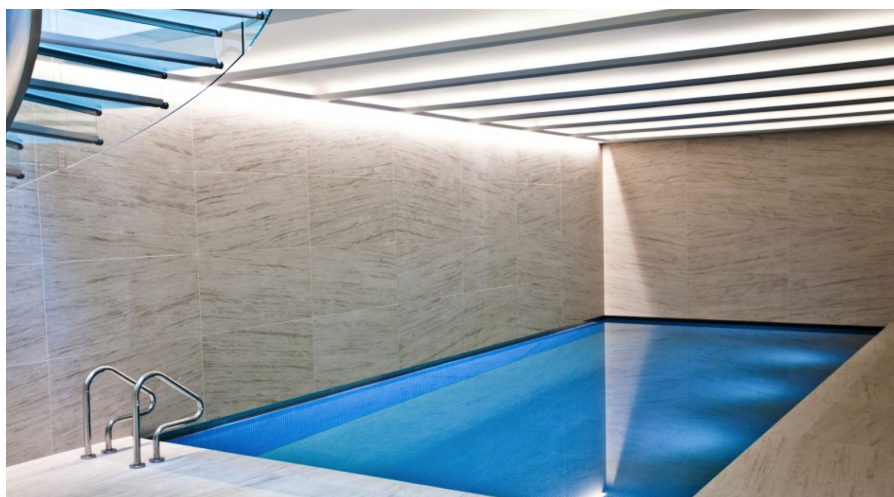
The same bespoke tiling design runs throughout the spa and pool. Large format porcelain tiles in a travertine design were cut to mosaic size and affixed to a backing sheet. To give the tiling extra pizzazz, different shades of beige and brown tiles were combined. Completing the pool, an automatic slatted pool cover is installed in a recess floor completely hidden from visibility.

This elegant 9 x 4 metre pool and wellness area is located in a large double basement development in the rear garden of a major remodelling of a family home.

A counter-current unit has been installed at one end of the pool providing a powerful jet against which to swim.

In addition to the pool, the wellness area includes an air-conditioned gym, steam room, lounging/spa space and changing facilities, finished in shades of sand to harmonise with the understated colour palette of the property.

All are connected to the lower ground floor of the main house via a spectacular designer glass staircase which complements the transparent Italian glass mosaic tiles in the interior of the pool. The staircase provides a focal point and is an abundant source of natural light which enters through the opening from the glazed atrium. Ambient lighting is streamed from inside the recesses within the ceiling. The LED lights and fixtures are 316 grade stainless steel and offer an attractive contrast to the earth colours and materials used throughout.



Pool & Wellness Centre with Spiral Staircase, St John's Wood, London

Pool Design and Build: London Swimming Pool Company

Architectural design: Stuart Forbes Associates; Management contractor, Rise Contracts

Indoor Pools - Tiled



Minimalist Pool with Counter Current Swim Unit, London
Design and build: London Swimming Pool Company

This semi-level deck pool is simple in form with clean lines. The pool and hall use a monochromatic colour palette of subtle greys. The hall floods with natural light from the French windows, skylights and a roof lantern which casts attractive shapes on the pool water.

The 12.2 x 3.5m pool is finished in large format porcelain tiles which create a spacious feel. The pool incorporates a counter-current swim unit with a single turbine capable of delivering 160m³ per hour flow to swim against.

LSPC worked closely with the client to realise the bespoke tile layout pattern ensuring lines flow through the pool and onto the surround sympathetically, working into columns and window reveals and around the floor grilles.

The pool is equipped with an automatic pool cover. When the pool is covered, the air handling system sets back the room temperature from 28°C to 22°C, whilst keeping the pool water at 29°C, saving energy when the pool is not in use.

Installed in a grade 2 listed property, the 15 x 3m level deck pool features elegant slot edge detail which the client preferred over a conventional grill around the perimeter of the pool. The surround is slate coloured large format porcelain tiles.

The pool is fitted with a multi-coloured LED light changing system which can be adjusted to create different moods – one colour or up to eight shades can be activated to create shimmering effects on the mosaic tiles.

The pool cover is invisible to the eye having been installed under the wine cellar which is at the far end of the pool.



*SPATA Gold Award-winning
family pool with colour-changing lighting*
Design and build: London Swimming Pool Company

Housed in a transparent extension the 7 x 5m semi-level deck pool provides the best of both worlds – the glazed walls open on both sides, allowing sunshine to stream into the pool hall and to be closed when the outdoor pool season ends.

The pool hall wall has split tiling; at the top are cream coloured wavy textured tiles and below are oblong wood-effect stone tiles. A linear acoustic ceiling provides a unique appearance and incredible acoustics and a roof lantern channels natural light into the pool. The pool is tiled with grey porcelain tiles, fitted with a counter-current swim unit and a polycarbonate pool cover.



*The glazed windows open fully, providing two
aspects to the garden*
Design and build: London Swimming Pool Company
Architect: Davidson Architects

Outdoor Pools - Tiled



Twin Plunge Pools, Notting Hill, London

Pool Design and Build: London Swimming Pool Company
Architectural design, Hackett Holland; Building contractor: Town and Country

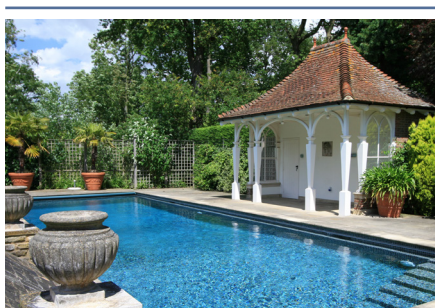
These two symmetrical hydrotherapy pools – one hot and the other cold – are part of a unique outdoor leisure area within a Victorian villa that was completely remodelled by the architect, who conceived the twin-pool concept and commissioned LSPC to deliver the design, engineering and installation expertise.



This highly complex specification, in particular the technology servicing the extensive features of the hot pool, required two plantrooms – one on the ground floor in the neo classical pavilion, and the second downstairs next to the subterranean gym and spa which extends underneath the entire terrace area.

The hot pool has eight massage jets, including a cascading jet for back and shoulder muscles, and a circular mat in the floor for foot massage. The depth and full width underwater steps in the cold pool allow bathers to wade in and out and remain standing while they cool down.

The stylish installations located at the end of the garden provide different temperature water and hydrotherapy in one place for relaxation and recuperation regardless of the weather. The twin plunge pools won a SPATA Design Silver Award.



Domestic Pool Refurbishment, Wimbledon, London
Refurbishment: London Swimming Pool Company

This sophisticated pool is the first ever project to receive two SPATA awards – first a Gold Award for Design and 13 years later, a Silver Award for Best Domestic Refurbishment.

The pool blends beautifully with the garden colours in the autumn and winter months as the pool remains open throughout that period.



Sapphire Pool, Sheen, Richmond upon Thames
Design and build: London Swimming Pool Company

A unique pool, with unusual dimensions of 7 x 9 metres and royal blue and purple iridescent tiles, which stands out in the lush garden. The sun sparkling on the water makes it look like a big square, perfectly set sapphire.

The split level bottom provides a shallow and a deep side, accommodating all ability swimmers and aquatic activities. The high tech features include a counter current swimming device for rigorous exercise on the spot and six massage jets along the underwater bench for relaxation.

Outdoor Pools - Tiled



SPATA Silver Award, Residential Inground Spa & Wellness

A fine example of what can be achieved in a small space: a contemporary pool, high-end hydrotherapy, the best swim training and no compromise water treatment.

Design and build: London Swimming Pool Company

The simplicity of design belies the smart technology and creative design applied to achieve what the client wanted. The integrated pool (6 x 3m) and spa run on a combined filtration system in order to use the minimum amount of space for the plant room, whilst also providing the highest quality water treatment and hydrotherapy spa. One automatic solar cover conceals both the pool and spa when they are not in use, rather than two separate covers.

A significant challenge was how to raise the spa water temperature without raising the pool water temperature simultaneously. This was achieved by installing a barrier that can be lifted into place to separate the pool and spa when the pool cover is off and the waters open.



*UK Pool & Spa Awards – Outstanding Pool Design
SPATA Gold Award – Commercial Spas & Wellness
Design and build: London Swimming Pool Company*

InterContinental London – The O2 added a large main pool, spa pool, and a steam and sauna room, to provide its gym, massage and therapy rooms. The facilities allow the hotel to provide the full spa experience, from swimming and exercise to relaxation and treatments.

This main pool is 17 x 7m with a waterfall that cascades from the pool and spa dividing wall. The small bespoke spa pool is 4.4 x 2.7m and features a lounger at each end of the central bench. These have bubble trays which give full air massage, and the bench has both back and calf water/air mixture jets for relaxing massages. Two neck-jet water cannons send bursts of water into the spa pool.

The interior is finished with ceramic blue mosaic tiles and the pool and spa surround are finished in cream-coloured large format porcelain tiles.

Commercial Pools - Tiled



Chelsea & Westminster Hospital Hydrotherapy Pool, London
Contractor: Bisley Contracting

Chelsea & Westminster Hospital's hydrotherapy pool underwent complete renovation.

The pool is used for rehabilitation of post-operative and injured people and the less able-bodied, enabling them to enjoy the therapeutic benefits of water.

The renovation project involved replacing the old interior liner with a custom-made high quality lining. The engineers had to drill through 16 inches of concrete to accommodate all the new return and suction lines necessary for the level of circulation required for a top quality, modern hydrotherapy pool.

The plumbing had to run through the ceiling of the hospital records storage room, a space measuring 18 inches high to overcome the difficulty of bending pipes around existing ceiling supports. The old plant was replaced with highly efficient filters and pumps to obtain the proper turnover rate. Glass beads filtration media was used instead of sand as they provide superior filtration and last longer.



This is a very large complex used by St Nicholas School for children with special needs and members of the local community. The pool was designed to enable people with disabilities and special needs to enjoy the experience and benefits of swimming and received a SPATA Gold Award for Special Requirements Pools.



Starfish Advanced Hydrotherapy Pool, Chippingham, Wiltshire
Architectural design and project management: Bailey Partnership

The pool features the very latest technology such as an in-water interactive multi-sensory system and ultra-violet water treatment, accommodating those with allergies and breathing difficulties.

A solar panel heating system provides the large amount of the energy required to keep the pool at a constant 34°C and greatly reduces the carbon footprint. A mechanical hoist enables pool access for the less able-bodied and specialist designed steps assist partially sighted users. The pool cover was custom made for the unusual shape of the pool.

Commercial Pools - Tiled

LSPC brought the old-fashioned 1960s private school pool complex into the 21st Century, winning a SPATA Gold Award for the project. The comprehensive refurbishment specification included adjusting the dimensions of the pool, installing electronic timing systems and scoreboard in line with FINA regulations for competition swimming.

The transformation also included a complete refit of the changing rooms and shower facilities and an advanced water treatment system for sparkling water quality.



Trinity School, Croydon, Surrey

Design and build: London Swimming Pool Company

Servicing, Maintenance and Refurbishment

LSPC Servicing's outstanding engineers offer comprehensive pool and spa servicing and maintenance, and small scale refurbishments. LSPC has the credentials and experience to service and maintain all pools and spas regardless of size and plant technology.

Engineers are highly trained to the standards of the Institute of Swimming Pool Engineers and to the CITB CSCS scheme. Naturally security, discretion and confidentiality are integral to their job specification.



Each client is allocated a dedicated engineer who builds up knowledge of the client's pool and spa – if anything unexpected occurs with the water or plant, the engineer can correct it quickly and cost-effectively. By providing a first-class maintenance and water treatment service, LSPC has built long-term relationships with clients who trust its engineers to manage their pools and spas year in year out.

Our comprehensive range of services means clients have everything they need from one pool company:

- Free survey to determine servicing and maintenance requirements
- Commissioning of new pools
- Opening up outdoor pools in the spring and closing them for the winter
- Regular monitoring and management of chemicals to keep the water in pristine condition and protect its longevity
- General pool cleaning (eg brushing, vacuuming), washing and re-grouting mosaic tiles, checking the performance of filters and pumps, cleaning pool covers and surrounding areas
- Repair and maintain pool and spa filters, pumps, heaters and controls to ensure optimum performance
- Emergency call out service
- Refurbishment of private and small-scale commercial pools and spas



Outstanding Pools. Without Compromise.

Unit 1, Shannon Commercial Centre
Beverley Way, New Malden KT3 4PT

Tel: 020 8605 1255

enquiries@londonswimmingpools.com

www.londonswimmingpools.com



@LSPC_Ltd



facebook.com/LSPC.LTD



INTERIOR DESIGN
better decisions for better environments



Registered Office: James House, 40 Lagland Street, Poole, Dorset, BH15 1QG
London Swimming Pool Company Servicing Ltd - Reg No 07274168
London Swimming Pool Company Contracting Ltd - Reg No 1828171