



Tobermore

WORLD CLASS PAVING & WALLING

#CaseStudy

5

Martello Park

//////Pembroke

Housing Developments





Country Stone | Bracken

Developer
Persimmon Homes

Architect
Hammond Architectural Services

Landscape Architect
Tirlun Design Associates

Groundworker
Jones Bros

Products Used:
Country Stone | Bracken

“We were really impressed with the range and the colours available. We felt it was the perfect solution in blending the homes with the local area.

Availability of stock was also a big issue as we had to ensure continuity on site to meet our requirements and this is something that Tobermore guaranteed”

Paul Barnikel | Site Manager, Persimmon Homes

Nostalgic Country Stone Proves the Perfect Solution for Persimmon Homes

Martello Park in Pembroke, South Wales, is one of the latest developments crafted by Persimmon Homes. The housebuilder faced challenges with this project in sourcing a housebuilding product that would blend with the traditional surroundings and vintage charm of Pembroke. That was until Tobermore introduced Persimmon Homes to Country Stone Walling – an attractive yet cost-effective alternative to natural stone

Paul Barnikel, Persimmon Homes Site Manager at Martello Park, explained that the village of Pembroke is steeped

in history – evident with the presence of beautiful ancient castle walls and old stone buildings surrounding the area.

For this reason, Persimmon Homes worked with Hammond Architectural Services to achieve a traditional design concept. The housebuilder was seeking a split-face building product that could produce homes with an authentic, stone appearance, rather than the more modern finish of facing brick.

Tobermore’s Welsh sales team were certain that the rustic finish of Country Stone Walling was the answer to

Persimmon Homes’ hopes.

Country Stone Walling features a naturally weathered stone appearance, and the cost and ease of installation make it ideal for creating homes with style and character. The products ‘country-chic’ look is something that is increasingly sought after by new home buyers – and there is no doubt that visual appeal is crucial when selling properties.

Following a presentation from Tobermore on the technical capabilities and aesthetic qualities of Country Stone Walling, it was the obvious choice for Martello Park.

Paul Barnikel explained: **“We were really impressed with the range and the colours available. We felt it was the perfect solution in blending the homes with the local area.**

Availability of stock was also a big issue as we had to ensure continuity on site to meet our requirements and this is something that Tobermore guaranteed.”

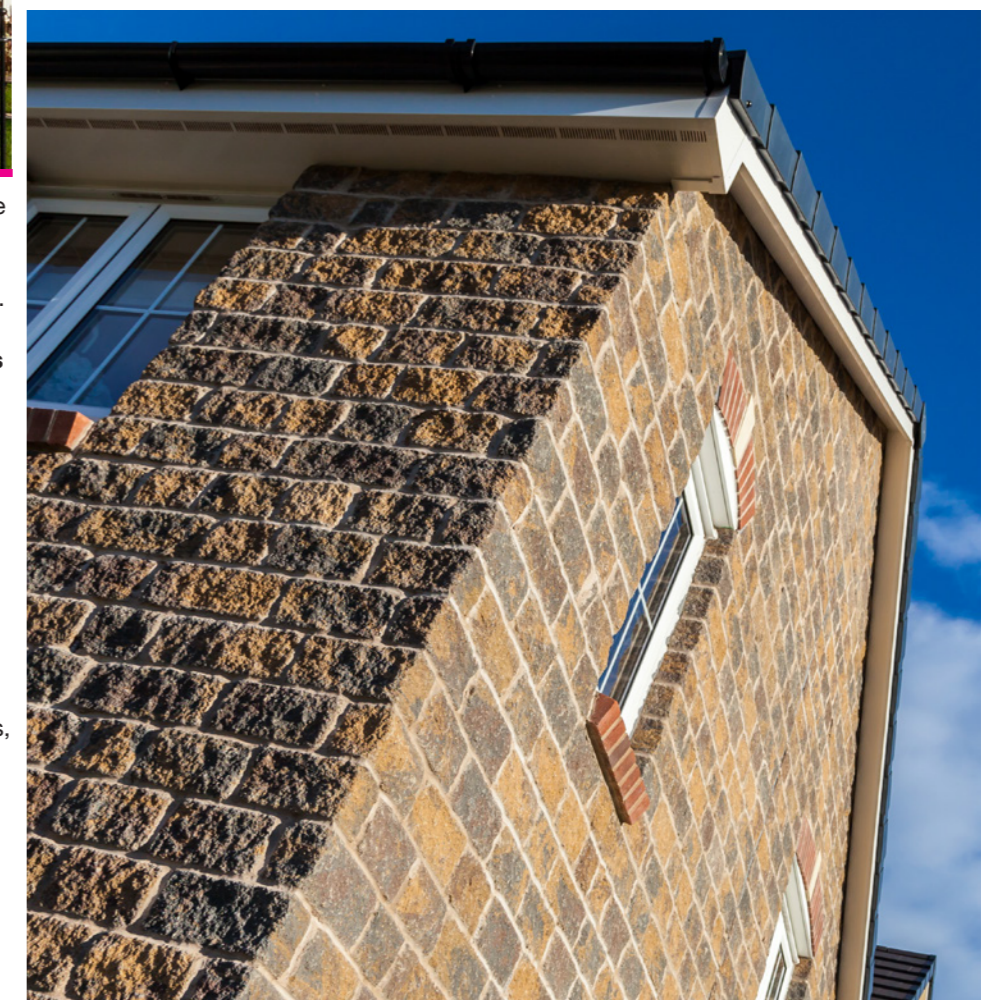
Country Stone Walling in the mellow, blended tones of Bracken was specified, and Tobermore continued to provide

support throughout the development of the project.

Paul Barnikel praised the service and expertise provided by the Tobermore team. **“From the initial sales visit through to scheduling and delivery, the service was first class.”**

Tobermore’s split-face walling solution met the requirements of the development wonderfully and Paul would recommend the product for any commercial or domestic application. **“The desired effect has been achieved, and everyone, including the householders, is pleased with the finished properties.”**

Named after the ancient Martello Tower in Pembroke Dock, Martello Park consists of 141 two, three and four bedroom homes, and offers a relaxed family-orientated environment.



Scan for more images



Or visit:
<http://bit.ly/2egm74n>



Tobermore

WORLD CLASS PAVING & WALLING

Tobermore Head Office

2 Lisnamuck Road, Tobermore, County L'derry, BT45 5QF

Tel: 028 7964 2411 Fax: 028 7964 4145

www.tobermore.co.uk | **0844 800 5736** | 