

tactile flags



ISO 9001:2008



ISO 14001:2004

- Available in Blister, Off Set Blister, Hazard Warning and Cycleway finishes
- Superb hard-wearing surface
- Vibrant long-lasting colours
- Significantly reduced efflorescence

product specifications

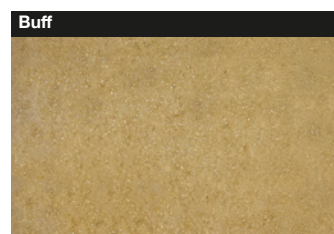
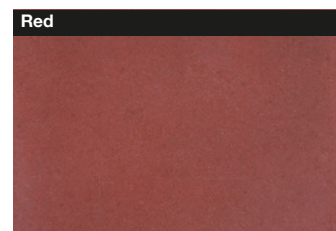
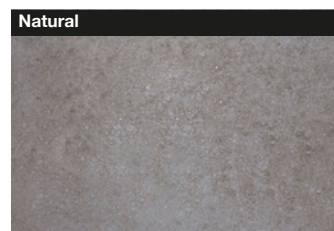
Product type	Concrete Paving Flag
Manufactured to	BS EN 1339:2003
Surface layer	Hard wearing surface layer with a minimum of 4mm and >390kgs/m ³ cement
Efflorescence	Minimum 12 hour vapour curing to significantly reduce the possibility of efflorescence
Strength	Class 3
Slip/Skid resistance	Extremely Low (>75 USRV)
Installed to	BS 7533-4:2006
BSIplus	Q25 320
Applications	Suitable for all pedestrian areas and traffic-free zones. Always refer to BS 7533-8:2003 for guidance on the correct flag size to suit your application.
Energy used	100% renewable energy
Water used	100% water used from rainwater harvesting system
Carbon Footprint	22kgCo ₂ e/m ²
Recyclable	100% of this product can be recycled
Manufacturing location	Produced in the UK with locally sourced materials
breem rating www.bre.co.uk	A , according to the Green Guide to Specification, 4 th Edition 2009. A+ , can be achieved by using a recycled sub-base.

Tobermore products are manufactured in accordance with an accredited ISO 9001:2008 quality system. Manufacturing facilities are accredited to ISO14001:2004 Environmental Management. The company publish Environmental labels and declarations in accordance with BS EN ISO 14021:2001.

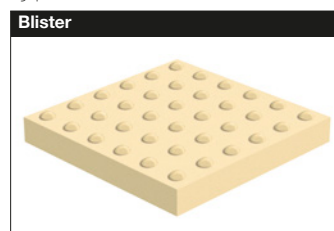


Tactile Flags Blister Buff

colours

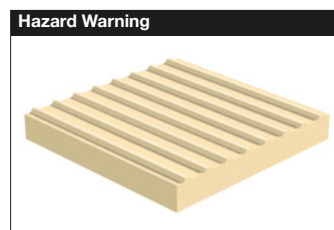


types



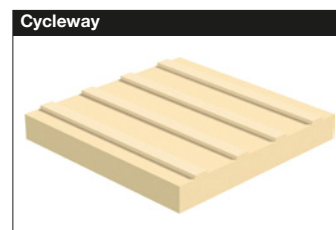
Blister flags enable the partially blind to distinguish between different types of crossing zones.

Red relates to controlled crossing zones, while Buff is available to distinguish uncontrolled crossing zones.



This pattern of half-rod shaped bars provides warning of a hazard which requires caution e.g. at the top and bottom of a flight of stairs, at a cross-roads on a shared pedestrian/cycleway, at a level crossing.

It is recommended that the surface be in contrasting colour to the surrounding area so as to assist partially sighted people.



This bar pattern is used on a shared pedestrian/cycle route, which is not segregated by different levels. It is laid in two orientations, transverse to denote pedestrian path and longitudinal to denote cycle path.

It is recommended that the surface be in contrasting colour to the surrounding area so as to assist partially sighted people.

product	size (mm)	finish	edge	colours available	in stock	no. per m ²	no. per pack	weight (kg) per pack
TACTILE FLAGS	400 x 400 x 50	BLISTER	SQUARE	Buff, Red	YES	6.25	20	393
	400 x 400 x 50	HAZARD WARNING	SQUARE	Buff, Natural	YES	6.25	20	416
	400 x 400 x 50	CYCLEWAY	SQUARE	Buff	YES	6.25	20	397

Refer to all instructions and warnings on our website