

Tactile Flags

Aids the visually impaired & blind.

Tactile Flags are designed to assist pedestrians who are visually impaired or blind. Tactile Flags are available for three separate demarcations in a range of colours to enhance the distinction between roadways and adjoining paving.

- Available in Blister, Hazard Warning and Cycleway finishes
- Superb hard-wearing surface
- Vibrant long-lasting colours

Ef-Stop®

B	HW	C
Blister	Hazard Warning	Cycleway

Finish



Pedestrian Use



Light Traffic

Refer to relevant guidance in BS 7533



400 x 400mm

Sizes



50mm

Depths



Tactile Flags



Specification



Product type	Concrete Paving Flag
Manufactured to	BS EN 1339:2003
Surface Layer	Hard-wearing surface layer with a minimum of 4mm and >390kgs/m ³ cement
Efflorescence	Minimum 12 hour vapour curing to significantly reduce the possibility of efflorescence
Strength	Typical tensile splitting strength of >5MPa (Class 3)
Slip/Skid risk	Extremely Low
Installed to	BS 7533-4:2006
NSI	Plus Q25 320 Create 45-20-64/425
Applications	Refer to the relevant part of BS 7533 for the correct sub-base design for your application. Available from www.bsigroup.co
Energy used	100% renewable energy
Water used	100% from our rainwater harvesting system and groundwater bore hole
Recycled content	Not less than 5%
Carbon Footprint	22kgCo2e/m ²
Recyclable	100% of this product can be recycled
Manufacturing & Delivery	From one location within the UK
breedm rating www.bre.co.uk	A , according to the Green Guide to Specification, 4 th Edition 2009. A+ , can be achieved by using a recycled sub-base.

Tobermore products are manufactured in accordance with an accredited ISO 9001:2015 Quality Management. Manufacturing facilities are accredited to ISO14001:2015 Environmental Management. The company publish environmental labels and declarations in accordance with BES 6001.

Stock

product	size (mm)	finish	edge	colours available	in stock	no. per m ²	no. per pack	no. per pallet	weight kg per pack GB	weight kg per pack NI/ROI
Tactile Flags	400 x 400 x 50	Blister	Square	Buff, Red	YES	6.25	20	80	393	391
	400 x 400 x 50	Hazard Warning	Square	Buff, Natural	YES	6.25	20	80	416	414
	400 x 400 x 50	Cycleway	Square	Buff	YES	6.25	20	80	397	395

Contact Us

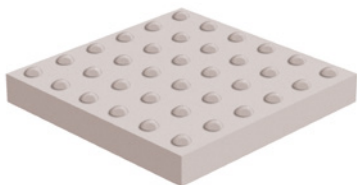
GB: 0844 800 5736
NI: 028 7964 2411
ROI: 048 7964 2411

Email

technical@tobermore.co.uk
sales@tobermore.co.uk

tobermore.co.uk

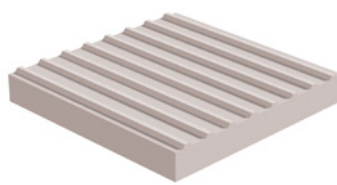
Tactile Flags



Blister

Blister flags enable the partially sighted and blind to distinguish between different types of crossing zones.

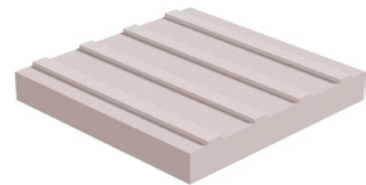
Red relates to controlled crossing zones, while Buff is available to distinguish uncontrolled crossing zones.



Hazard Warning

This pattern of half-rod shaped bars provides warning of a hazard which requires caution e.g. at the top and bottom of a flight of stairs.

It is recommended that the surface be in contrasting colour to the surrounding area so as to assist partially sighted people.



Cycleway

This bar pattern is used on a shared pedestrian/cycle route, which is not segregated by different levels. It is laid in two orientations, transverse to denote pedestrian path and longitudinal to denote cycle path.

Natural



Red



Golden



Contact Us

GB: 0844 800 5736
 NI: 028 7964 2411
 ROI: 048 7964 2411

Email

technical@tobermore.co.uk
 sales@tobermore.co.uk