



**Fusion**  
Block Paving



# Contents

## Fusion

---

Why Tobermore?	4
■ <b>Product Range</b>	
Fusion	12
Hydropave Fusion	18
Laying Patterns	22
Paving Advice Service	26
■ <b>Featured Projects</b>	30
Public Realm	32
Retail	34
Commercial	36
Education	38
Housing	40
Sports & Leisure	42
Healthcare	44
■ <b>Instructions &amp; Warnings</b>	46

## A Proud History

**TOBERMORE**  
SAND & GRAVEL Co.

# 75 Years & counting

Behind every remarkable company lies a story of vision and exceptional determination.

At Tobermore our inspirational story began over 75 years ago when Sam Henderson returned from the war as a young man. His mother had saved £500 during his time away and this was quickly invested in a fledgling family business. Sam went on to lead the business into pioneering production of concrete products before subsequent developments laid the foundations for the Tobermore brand.

Today, Tobermore remains family owned and managed, with the same vision, determination and values which are driving the business forward as one of

the UK and Ireland's leading manufacturers of concrete paving and walling products. We are now trusted suppliers to some of the country's most prestigious schemes in partnership with leading contractors and housebuilders.

At Tobermore "average" is never acceptable. Our recent £4m investment in the world's most advanced manufacturing equipment is indicative of our determination to always serve our chosen markets with excellent quality and service.

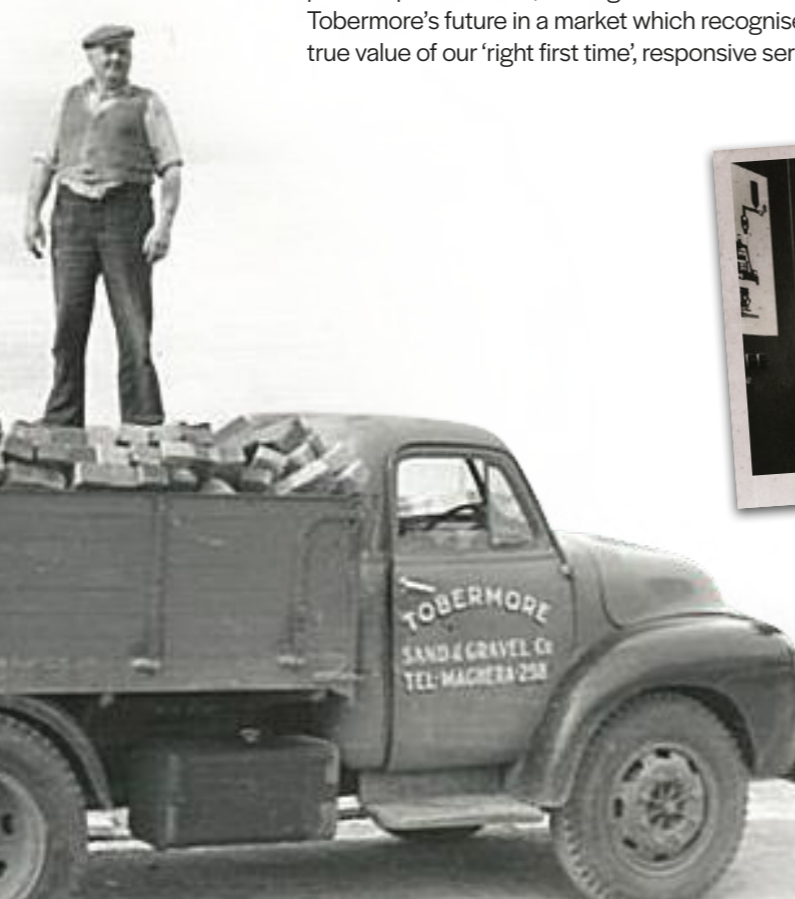
In 2019 we launched a fresh new face for Tobermore reflecting the energy and spirit which drives our people to bring market-beating solutions to designers and contractors across the country. Innovation fuels our growth as we find new ways to further enhance product performance, making us enthusiastic about Tobermore's future in a market which recognises the true value of our 'right first time', responsive service.



 **Tobermore**

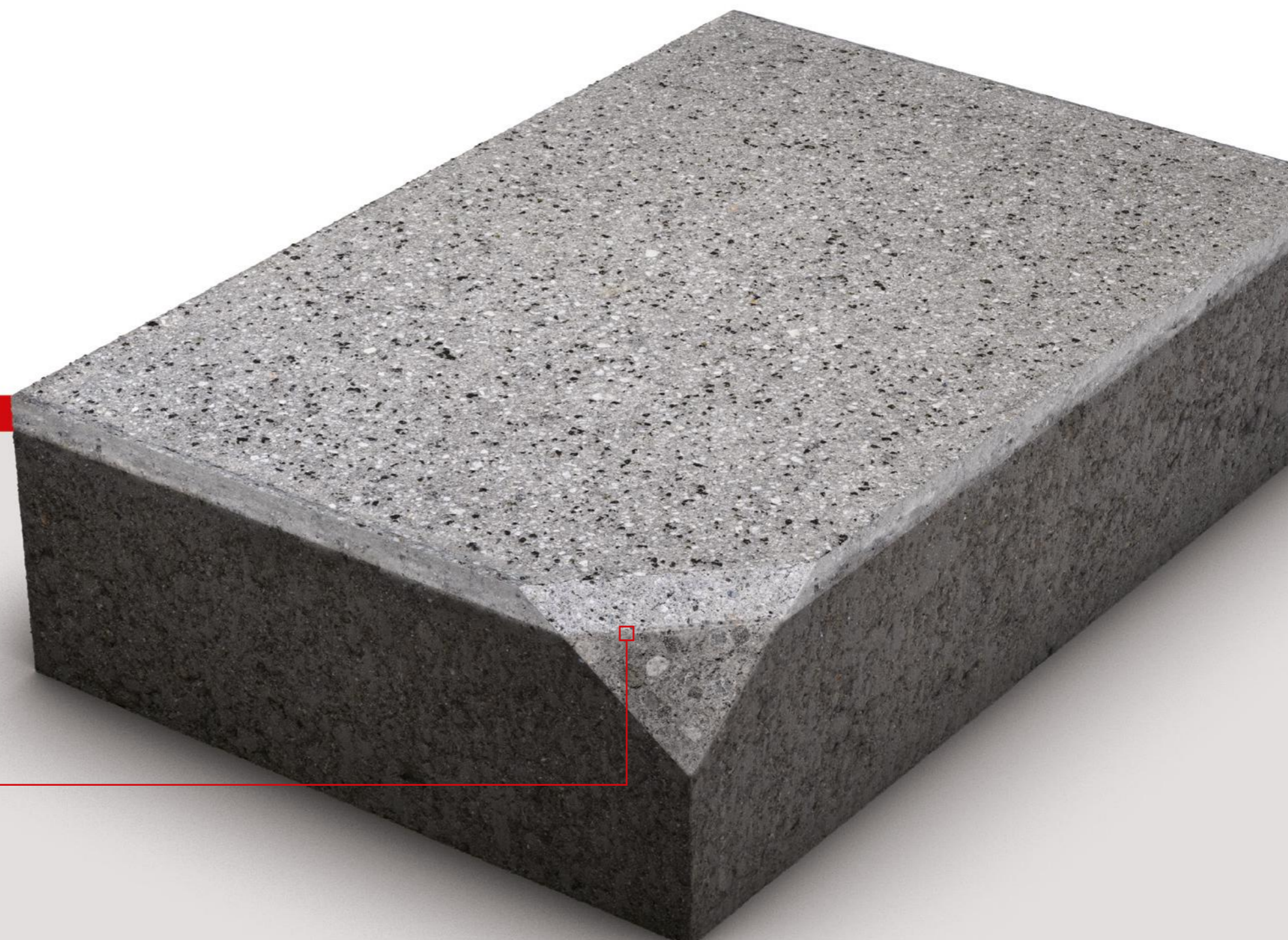
“ Our continual investment in people and new technology is securing Tobermore's excellence for both quality and service.

**David Henderson**  
Managing Director



# PrimeTop®

PrimeTop is the high performance feature which differentiates Tobermore from standard concrete paving. Tobermore's PrimeTop is manufactured with a premium, hard-wearing surface layer which adds significant performance benefits.



## PrimeTop Layer

### Hard-wearing Surface

The PrimeTop surface layer has a dense composition of finer aggregates, hard sand and a higher percentage of cement. This hardened surface layer has enhanced strength and increased resistance to wear and tear, for both pedestrian and vehicular traffic.

We produce two different material mixes; the PrimeTop layer and a robust base layer formulated for optimum structural performance. Both layers are formed simultaneously, producing an inseparable bond that stands the test of time.

### Aesthetic appeal & enhanced weathering

The PrimeTop surface layer contains a high concentration of pigment creating vibrant colour and exceptional UV performance, leading to enhanced weathering properties.

Tobermore PrimeTop is renowned for its superior long-term retention of colour and visual appeal.



**PrimeTop®**  
Look for products with the PrimeTop logo



✓ More **Cement**    ✓ More **Pigment**    ✓ Finer **Aggregates**

# **Ef-Stop**<sup>®</sup>


## Combatting efflorescence

Every aspect of our product's performance is researched and optimised to provide an excellent long-lasting appearance. In respect to the challenge of efflorescence, we have invested in manufacturing technology which enables us to produce virtually efflorescence free paving.

Efflorescence is perhaps the single biggest problem encountered with decorative concrete paving products. The cause of efflorescence is simply a chemical reaction between the cement in the concrete and rainwater causing the formation of calcium carbonate. This white, crystalline substance stains the surface and spoils the appearance of the paving.

In the Tobermore manufacturing process, we cure our products in a warm vapour atmosphere for 12 hours, which ensures that efflorescence is dramatically reduced. Moreover, the vapour curing also enhances the colour, improves the strength and cures the products much faster, allowing products to be used almost immediately.



 **Ef-Stop**<sup>®</sup>  
Look for products with the Ef-Stop logo



Competitor's paving



**Vapour Cured**  
The Ef-Stop protection includes an intense vapour curing process. Vapour penetrates to the core of the paver.

# ServiceSure

ServiceSure is Tobermore's unique package of customer service benefits developed to ensure an efficient, consistent and streamlined experience. This unbeatable, seamless service follows your project from initial enquiry to delivery and beyond, keeping you fully informed at every stage.

### Delivery Excellence

You can trust Tobermore to fulfil your order on time and in full as agreed. This industry leading service is proven week in week out and in 2018 we achieved outstanding delivery performance with 99.47% of orders on time and in full.

**99.4%**  
ON TIME IN FULL

### Easy Spec

Our specification team is on hand across the UK and Ireland to support you with technical advice, design support and samples. Tobermore's comprehensive website provides additional access to useful information. This is backed up by a package of the industry's leading specification tools including NBS Plus/Create and BIM Level 2.



NBS  
Plus & Create



BIM  
Level 2



Design  
Services

### Fast Quote

We always turn around quotes within one working day.

### Unrivalled Availability

With more stock on the ground and a faster turnaround on batch controlled orders we offer market leading availability on a full range of paving and walling products. Because we manufacture everything on one site we can combine mixed product loads for customer friendly logistics.





# Fusion

Outstanding aesthetics and performance.

The Fusion range with natural granite aggregates offers exceptional choice with a wide variety of formats, sizing and colour options. Fusion is available in our permeable solution, Hydropave, together with the innovative AirClean variant.

The combination of sparking natural granite aggregates and bright contemporary colourways provides a Fusion option for every project requiring a modern paving solution.

Every Fusion block is manufactured with Tobermore's PrimeTop construction for enhanced wear and colour retention while the Ef-Stop vapour treatment dramatically reduces the possibility of efflorescence.

Professionals across the UK and Ireland consistently rely on Fusion as their paving of choice due to its consistent performance and Tobermore's seamless support at every stage of the project, from specification to completion.



Fusion

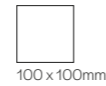


# Fusion

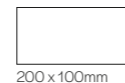
## Modular granite aggregate paving.

Fusion's granite appearance creates a striking, contemporary look. An extensive range of colours allows for the creation of unique paving patterns and designs.

- Vibrant, granite appearance
- Manufactured with sparkling natural granite aggregates
- Superb hard-wearing granite surface
- Vibrant long-lasting colours
- Significantly reduced efflorescence
- Creates a striking, contemporary look



100 x 100mm



200 x 100mm



200 x 200mm



300 x 200mm



300 x 300mm



600 x 300mm

### Sizes



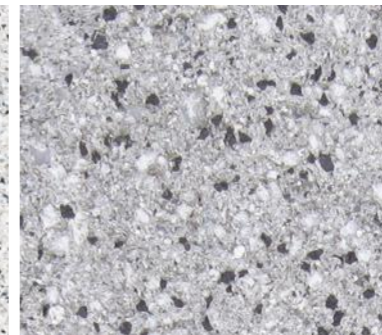
60mm  
80mm

### Depths

Blanc



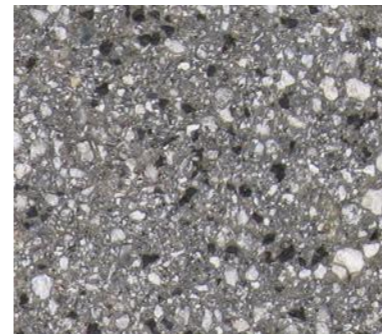
Silver



Mid Grey



Graphite



Noir



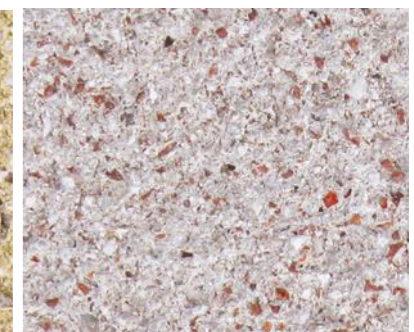
Cream



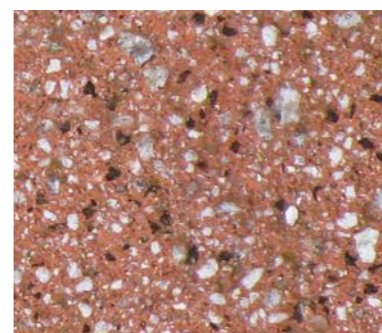
Sandstone



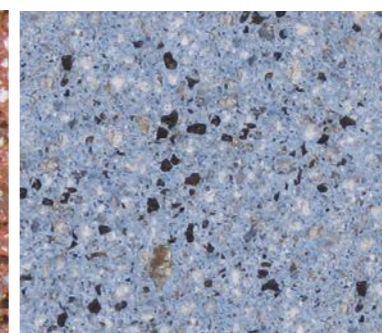
Rose



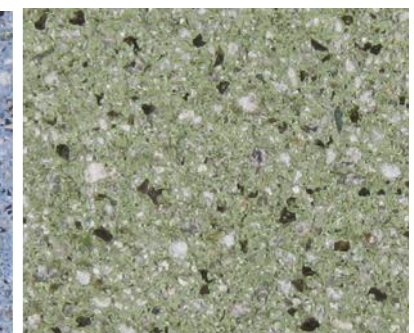
Russet



Azure Blue



Jade Green



### IMPORTANT INFORMATION

Tobermore recommend that you separate product groups using contrasting bands of colour as each product is manufactured separately and may have slight variations in colour.



# Fusion

**TGA**  
Textured  
Granite Aggregate  
Finish

♻️  
Permeable

☁️  
AirClean

🚶  
Pedestrian  
Use

🚗  
Light  
Traffic

🚚  
Commercial  
Traffic

Also available as

Refer to relevant guidance in BS 7533

📦  
BIM  
Level 2



## Specification

**PrimeTop** **Ef-Stop**

<b>Product type</b>	Concrete Paving Block		
<b>Manufactured to</b>	<b>BS EN 1338:2003</b>	100x100x60mm 200x100x60mm 200x200x60mm 100x100x80mm	200x100x80mm 200x200x80mm 300x200x80mm 300x300x80mm
	<b>BS EN 1339:2003</b>	300x200x60mm 300x300x60mm	600x300x60mm 600x300x80mm
<b>Surface Layer</b>	Hard-wearing surface layer with a minimum of 4mm and >350kgs/m <sup>3</sup> cement		
<b>Surface Finish</b>	Textured Granite Aggregate		
<b>Granite Content in Surface Layer</b> <small>(Not less than %)</small>	<b>53%</b>	Azure Blue, Cream, Graphite, Jade Green, Mid Grey, Russet, Silver	
	<b>45%</b>	Sandstone	
	<b>20%</b>	Rose	
	<b>8%</b>	Blanc	
	<b>3%</b>	Noir	
<b>Efflorescence</b>	Minimum 12 hour vapour curing to significantly reduce the possibility of efflorescence		
<b>Strength</b>	<b>BS EN 1338:2003</b>	Typical tensile splitting strength of >3.6MPa	
	<b>BS EN 1339:2003</b>	Typical tensile splitting strength of >5MPa (Class 3)	
<b>Slip/Skid risk</b>	Extremely Low		
<b>Installed to</b>	<b>BS 7533-3:2005</b>	100x100x60mm 200x100x60mm 200x200x60mm 100x100x80mm	200x100x80mm 200x200x80mm 300x200x80mm 300x300x80mm
	<b>BS 7533-4:2006</b>	300x200x60mm 300x300x60mm	600x300x60mm 600x300x80mm
<b>BS</b>	<b>Plus Q24 110</b>	100x100x60mm 200x100x60mm 200x200x60mm 100x100x80mm	200x100x80mm 200x200x80mm 300x200x80mm 300x300x80mm
	<b>Create 45-20-64/400</b>	300x200x60mm 300x300x60mm	600x300x60mm 600x300x80mm
<b>Applications</b>	Refer to the relevant part of BS 7533 for the correct sub-base design and the most suitable product size for your application. Available from <a href="http://www.bsigroup.com">www.bsigroup.com</a>		
<b>Energy used</b>	100% renewable energy		
<b>Water used</b>	100% water used from rainwater harvesting system and groundwater bore hole		
<b>Recycled content</b>	Not less than 6%		
<b>Carbon Footprint</b>	<b>60mm</b>	26kgCO <sub>2</sub> e/m <sup>2</sup>	
	<b>80mm</b>	34kgCO <sub>2</sub> e/m <sup>2</sup>	
<b>Recyclable</b>	100% of this product can be recycled		
<b>Manufacturing &amp; Delivery</b>	From one location within the UK		
<b>breeam rating</b> <small>www.bre.co.uk</small>	<p><b>60mm: A</b>, according to the Green Guide to Specification, 4<sup>th</sup> Edition 2009. <b>A+</b>, can be achieved when used in conjunction with a prepared recycled sub-base.</p> <p><b>80mm: B</b>, according to the Green Guide to Specification, 4<sup>th</sup> Edition 2009. <b>A</b>, can be achieved when used in conjunction with a prepared recycled sub-base.</p>		

Tobermore products are manufactured in accordance with an accredited ISO 9001:2015 Quality Management. Manufacturing facilities are accredited to ISO14001:2015 Environmental Management. The company publish environmental labels and declarations in accordance with BES 6001.

## Stock

product	size (mm)	colours available	in stock	m <sup>2</sup> per pack	m <sup>2</sup> per slice	no. per m <sup>2</sup>	no. per pack	weight kg per pack GB	weight kg per pack NI/ROI
<b>Fusion 60mm</b> <b>BIM</b>	100 x 100 x 60	Graphite, Silver	YES	11.52	0.96	100	1152	1630	1620
		Mid Grey, Sandstone	MTO						
	200 x 100 x 60	Graphite, Silver	YES	13.44	2.24	50	672	1810	1800
		Mid Grey, Sandstone	MTO						
	200 x 200 x 60	Graphite, Silver	YES	12.48	2.08	25	312	1765	1755
		Mid Grey, Sandstone	MTO						
	300 x 200 x 60	Graphite, Silver	YES	12.48	3.12	16.66	208	1765	1755
		Mid Grey, Sandstone	MTO						
		Azure Blue, Blanc, Cream, Jade Green, Noir, Rose, Russet	SO						
	300 x 300 x 60	Graphite, Silver	YES	9.36	2.34	11.11	104	1325	1315
		Mid Grey, Sandstone	MTO						
		Azure Blue, Blanc, Cream, Jade Green, Noir, Rose, Russet	SO						
600 x 300 x 60	Graphite, Silver	YES	9.36	4.68	5.55	52	1325	1315	
	Mid Grey, Sandstone	MTO							
	Azure Blue, Blanc, Cream, Jade Green, Noir, Rose, Russet	SO							
<b>Fusion 80mm</b> <b>BIM</b>	100 x 100 x 80	Graphite, Silver	YES	9.6	0.96	100	960	1756	1746
		Mid Grey, Sandstone	MTO						
	200 x 100 x 80	Graphite, Silver	YES	9.6	1.6	50	480	1756	1746
		Mid Grey, Sandstone	MTO						
	200 x 200 x 80	Graphite, Silver	YES	9.6	1.6	25	240	1756	1746
		Mid Grey, Sandstone	MTO						
	300 x 200 x 80	Graphite, Silver	YES	9.6	2.4	16.66	160	1756	1746
		Mid Grey, Sandstone	MTO						
		Azure Blue, Blanc, Cream, Jade Green, Noir, Rose, Russet	SO						
	300 x 300 x 80	Graphite, Silver	YES	7.2	1.8	11.11	80	1319	1309
		Mid Grey, Sandstone	MTO						
		Azure Blue, Blanc, Cream, Jade Green, Noir, Rose, Russet	SO						
600 x 300 x 80	Graphite, Silver	YES	7.2	3.6	5.55	40	1319	1309	
	Mid Grey, Sandstone	MTO							
	Azure Blue, Blanc, Cream, Jade Green, Noir, Rose, Russet	SO							

**BIM** - This product is available to download from our website in BIM Level 2 format.



# Hydropave Fusion

Permeable paving with natural granite aggregates.

Hydropave Fusion is a popular permeable block paving product, manufactured with a natural granite appearance creating a striking, contemporary look.

- Functions as a SuDS paving system
- Granite appearance
- Manufactured with natural granite aggregates
- Superb hard-wearing granite surface
- Vibrant long-lasting colours
- Creates a striking, contemporary look

**PrimeTop** **Ef-Stop**



200 x 100mm



300 x 200mm



300 x 300mm



600 x 300mm

**Sizes**



80mm

**Depths**



Hydropave Fusion

# Hydropave Fusion

**TGA**  
Textured  
Granite Aggregate  
Finish

Pedestrian Use  
 Light Traffic  
 Commercial Traffic  
 Refer to relevant guidance in BS 7533



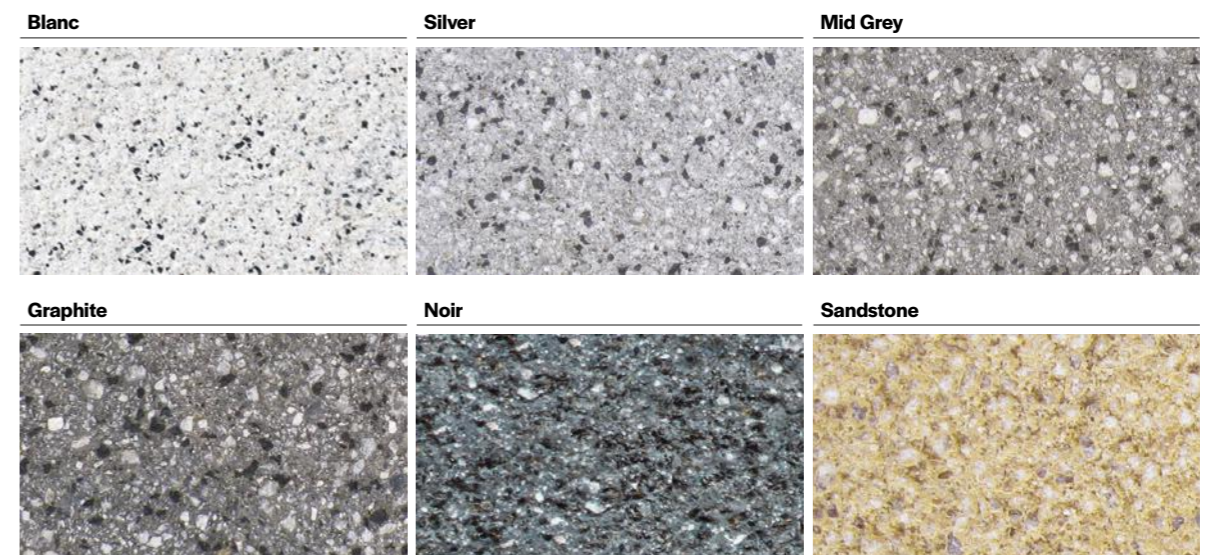
## Specification

<b>Product type</b>	Concrete Paving Block
<b>Manufactured to</b>	<b>BS EN 1338:2003</b> 200x100x80mm 300x200x80mm 300x300x80mm <b>BS EN 1339:2003</b> 600x300x80mm
<b>Surface Layer</b>	Hard-wearing surface layer with a minimum of 4mm and >350kg/m <sup>3</sup> cement
<b>Surface Finish</b>	Textured Granite Aggregate
<b>Granite Content in Surface Layer</b> (Not less than %)	<b>53%</b> Silver, Graphite, Mid Grey <b>45%</b> Sandstone <b>8%</b> Blanc <b>3%</b> Noir
<b>Efflorescence</b>	Minimum 12 hour vapour curing to significantly reduce the possibility of efflorescence
<b>Frost Protection</b>	Yes
<b>Drainage Void Width</b>	5.5% to accommodate correct grit grading, reduce maintenance and maximise drainage flow rate
<b>Strength</b>	<b>BS EN 1338:2003</b> Typical tensile splitting strength of >3.6MPa <b>BS EN 1339:2003</b> Typical tensile splitting strength of >5MPa (Class 3)
<b>Slip/Skid risk</b>	Extremely Low
<b>Installed to</b>	BS 7533-3:2005
<b>BS</b>	<b>Plus Q24 115 Create</b> 45-20-64/400 <b>Plus Q24 117 Create</b> 45-20-64/400 <b>Plus Q24 119 Create</b> 45-20-64/400
<b>Applications</b>	Refer to the relevant part of BS 7533 for the correct sub-base design and the most suitable product size for your application. Available from <a href="http://www.bsigroup.com">www.bsigroup.com</a>
<b>Energy used</b>	100% renewable energy
<b>Water used</b>	100% from our rainwater harvesting system and groundwater bore hole
<b>Recycled content</b>	Not less than 6%
<b>Carbon Footprint</b>	34kgCo <sub>2</sub> e/m <sup>2</sup>
<b>Recyclable</b>	100% of this product can be recycled
<b>Manufacturing &amp; Delivery</b>	From one location within the UK
<b>breem rating</b> <a href="http://www.bre.co.uk">www.bre.co.uk</a>	<b>B</b> , according to the Green Guide to Specification, 4 <sup>th</sup> Edition 2009. <b>A</b> , can be achieved by using a recycled sub-base.

Tobermore products are manufactured in accordance with an accredited ISO 9001:2015 Quality Management. Manufacturing facilities are accredited to ISO14001:2015 Environmental Management. The company publish environmental labels and declarations in accordance with BES 6001.

## Stock

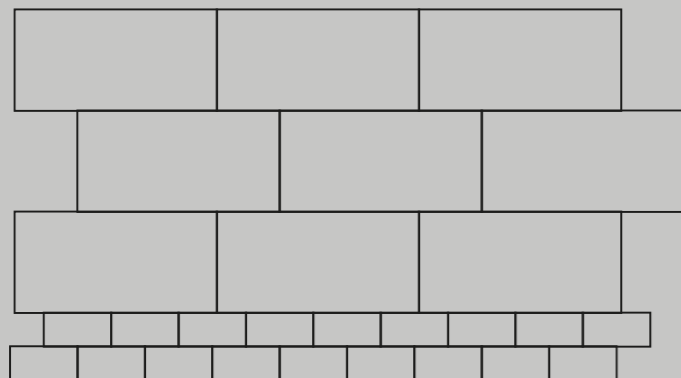
product	size (mm)	colours available	in stock	m <sup>2</sup> per pack	m <sup>2</sup> per slice	no. per m <sup>2</sup>	no. per pack	weight kg per pack GB	weight kg per pack NI/ROI
<b>Hydropave Fusion</b>	200 x 100 x 80	Graphite, Mid Grey, Silver	YES	9.6	1.6	50	480	1739	1729
	300 x 200 x 80	Blanc, Graphite, Mid Grey, Noir, Sandstone, Silver	MTO	9.6	2.4	16.66	160	1756	1746
	300 x 300 x 80	Blanc, Graphite, Mid Grey, Noir, Sandstone, Silver	MTO	10.8	2.7	11.11	120	1973	1963
	600 x 300 x 80	Blanc, Graphite, Mid Grey, Noir, Sandstone, Silver	MTO	10.8	5.4	5.55	60	1973	1963





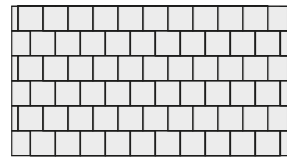
# Laying Patterns

As a modular paving product, with a variety of soft and striking colours available, Fusion offers an array of design possibilities. A variety of laying patterns can be achieved through the careful selection of sizes and colours to create a truly unique space.

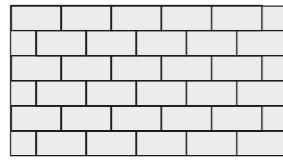


# Laying Patterns

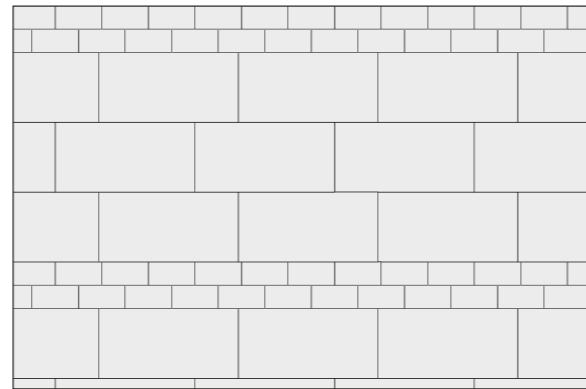
## Fusion



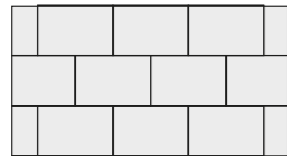
Stretcher bond  
100 x 100mm



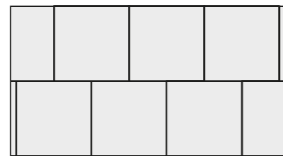
Stretcher bond  
200 x 100mm



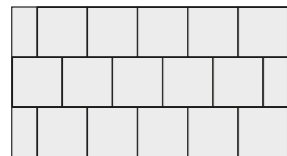
Stretcher bond  
600 x 300mm, 200mmx100mm



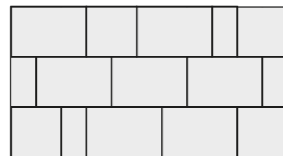
Stretcher bond  
300 x 200mm



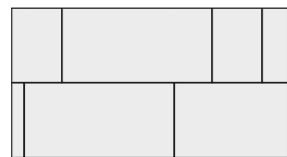
Stretcher bond  
300 x 300mm



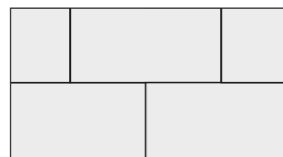
Stretcher bond  
200 x 200mm



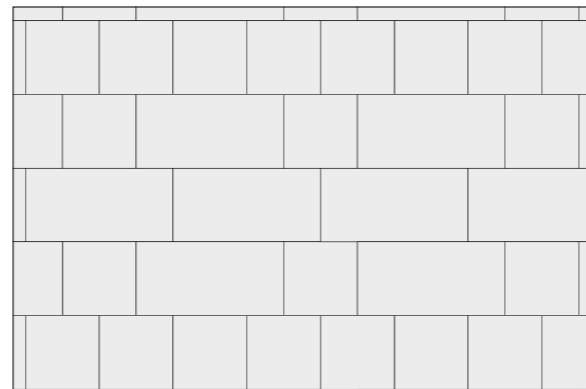
Stretcher bond, random pattern  
300x200mm, 200x200mm, 200x100mm



Stretcher bond, random pattern  
600x300mm, 300x300mm, 300x200mm

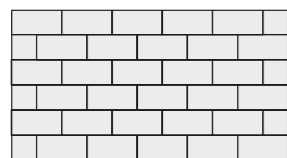


Stretcher bond  
600 x 300mm

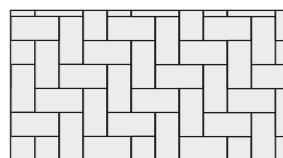


Stretcher bond  
600 x 300mm, 300mmx300mm

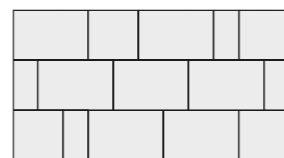
## Hydropave Fusion



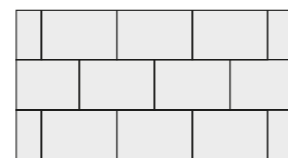
Stretcher bond  
200x100mm



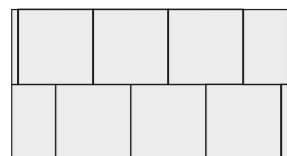
Herringbone 90°  
200x100mm



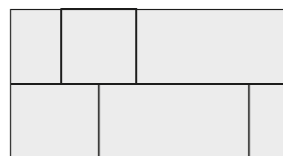
Stretcher bond, random pattern  
300x200mm, 200x200mm, 200x100mm



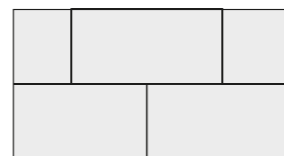
Stretcher bond  
300x200mm



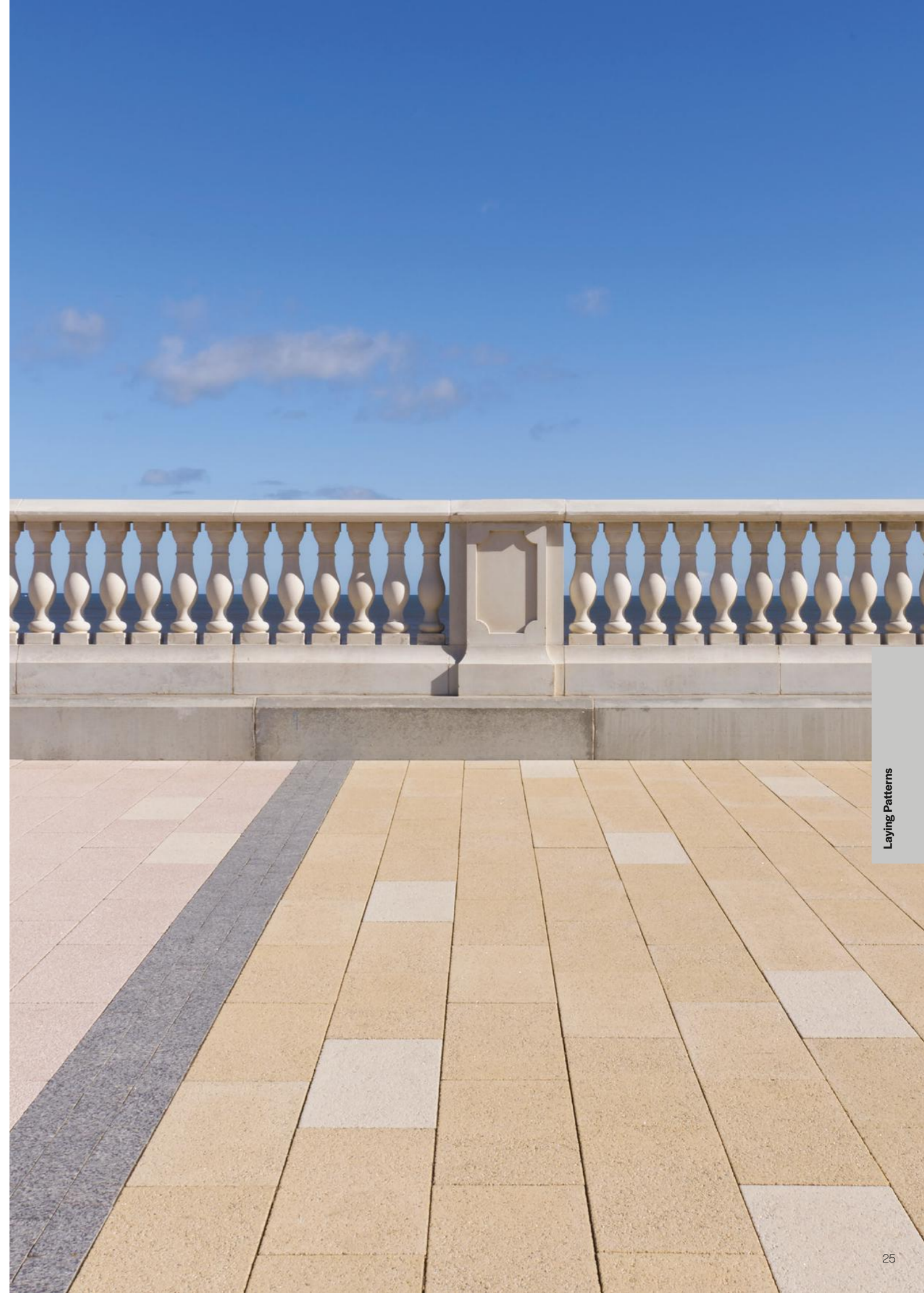
Stretcher bond  
300x300mm



Stretcher bond, random pattern  
600x300mm, 300x300mm, 300x200mm



Stretcher bond  
600x300mm





# Example Paving Advice



**Bet365 HQ**  
Stoke-on-Trent, Staffordshire

**Products:**  
Fusion  
Silver & Graphite

Country Kerb  
Granite

**Architect**  
Wood Goldstraw Yorath

**Main Contractor**  
John Sisk & Sons Ltd

**Sub Contractor**  
Techniblock

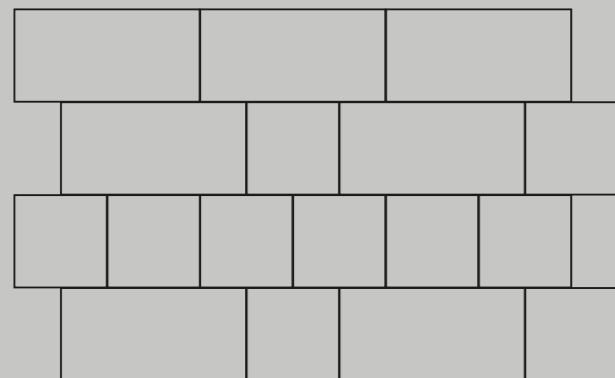
**Groundworker**  
E.P McEvelly Contractors



# Featured Projects

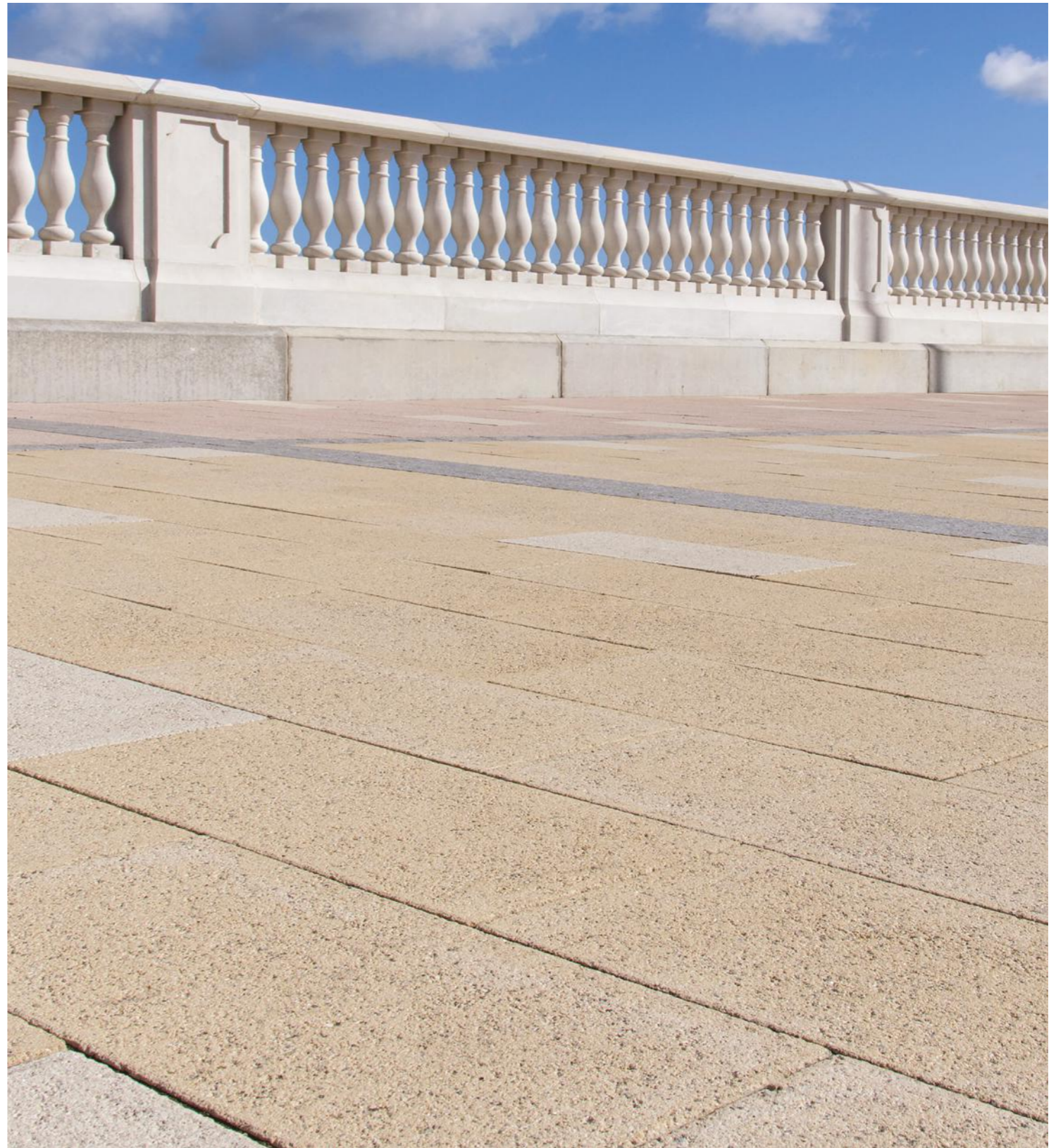
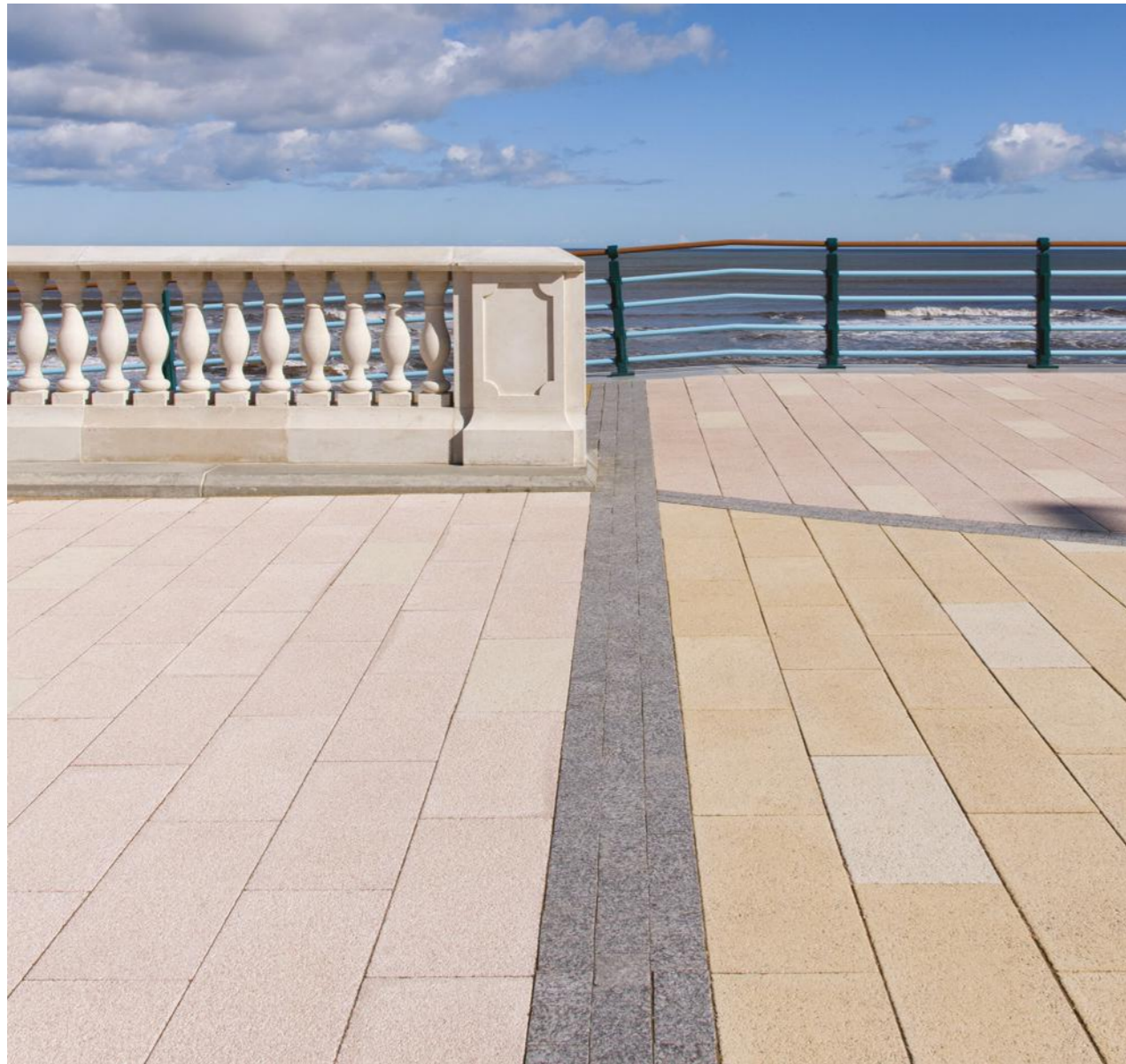
Tobermore's world class collection of Featured Projects are designed to provide a look at some of our most beautiful and impressive commercial schemes.

Our Featured Projects represent quality projects from the Public Realm, Commercial, Hotel, Leisure, Retail, Education, Housing, Heritage and Healthcare sectors in each region of the UK and Ireland, as well as showcasing the paving and walling products supplied by Tobermore.





# Public Realm



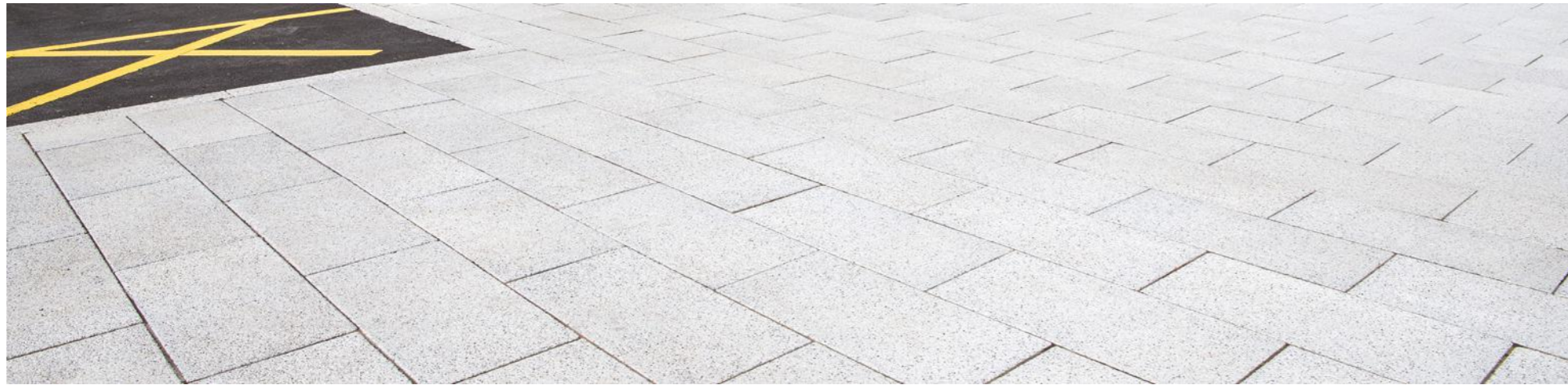
**Whitley Bay**  
Newcastle

**Products:**  
Fusion  
Cream, Rose & Sandstone

**Design**  
Capita & North Tyneside Council

**Contractor**  
Hall Construction Services Ltd

# Retail



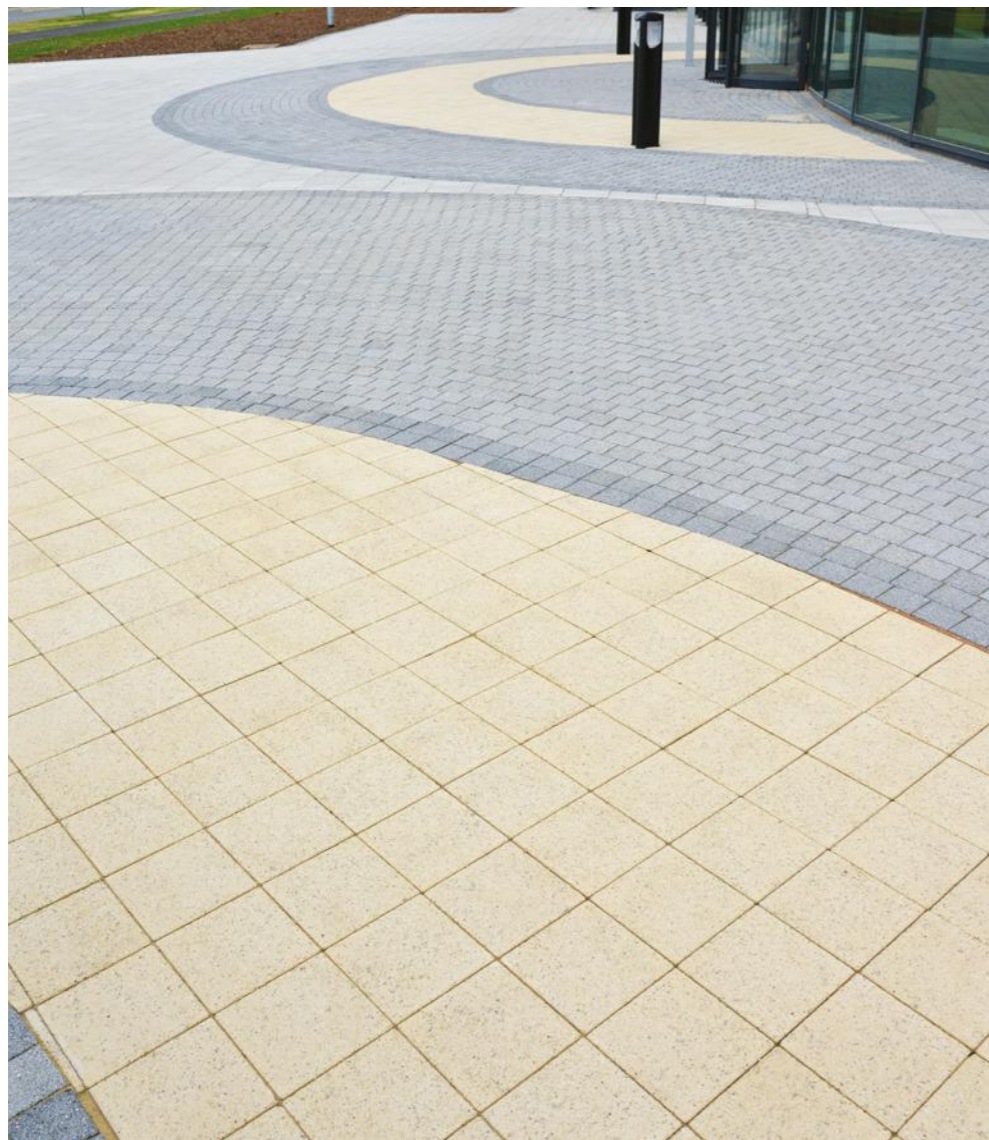
**ALDI**  
Queens Park

**Products:**  
Fusion  
Silver, Graphite, Rose & Sandstone

**Architect**  
Cassidy & Ashton

**Contractor**  
Castlehouse Construction

# Commercial



**Space & Technology Facilities Council**  
Didcot, Oxfordshire

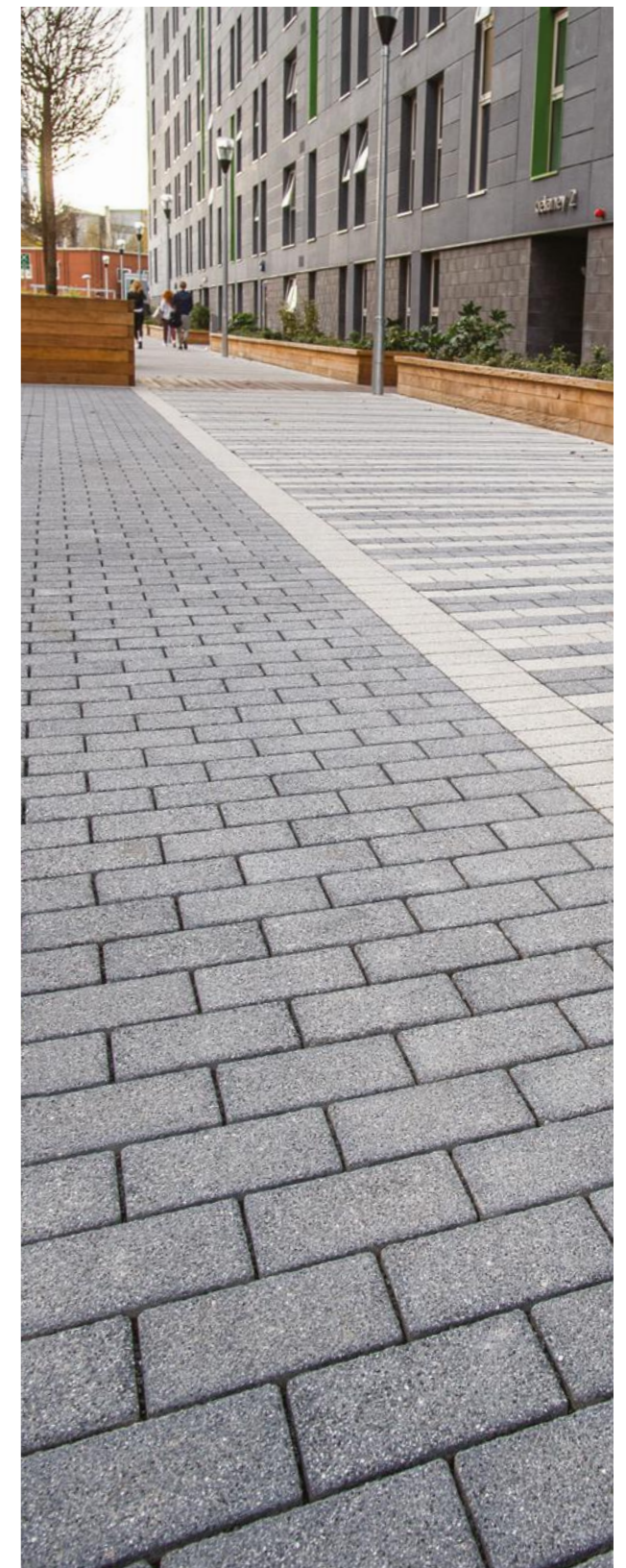
**Products:**  
Fusion  
Silver, Sandstone, Mid Grey & Graphite

**Client**  
Rutherford Appleton Laboratory  
& Science and Technology Facilities Council

**Architect**  
Fairhursts Design Group

**Contractor**  
Willmott Dixon

# Education



**Peel Park Quarter**  
University of Salford

**Products:**  
Hydropave Fusion  
Silver & Graphite    Country Kerb  
Graphite Aggregate

**Landscape Architect**  
Gillespies

**Main Contractor**  
Graham Construction

**Groundworker**  
Gibson Paving

# Housing



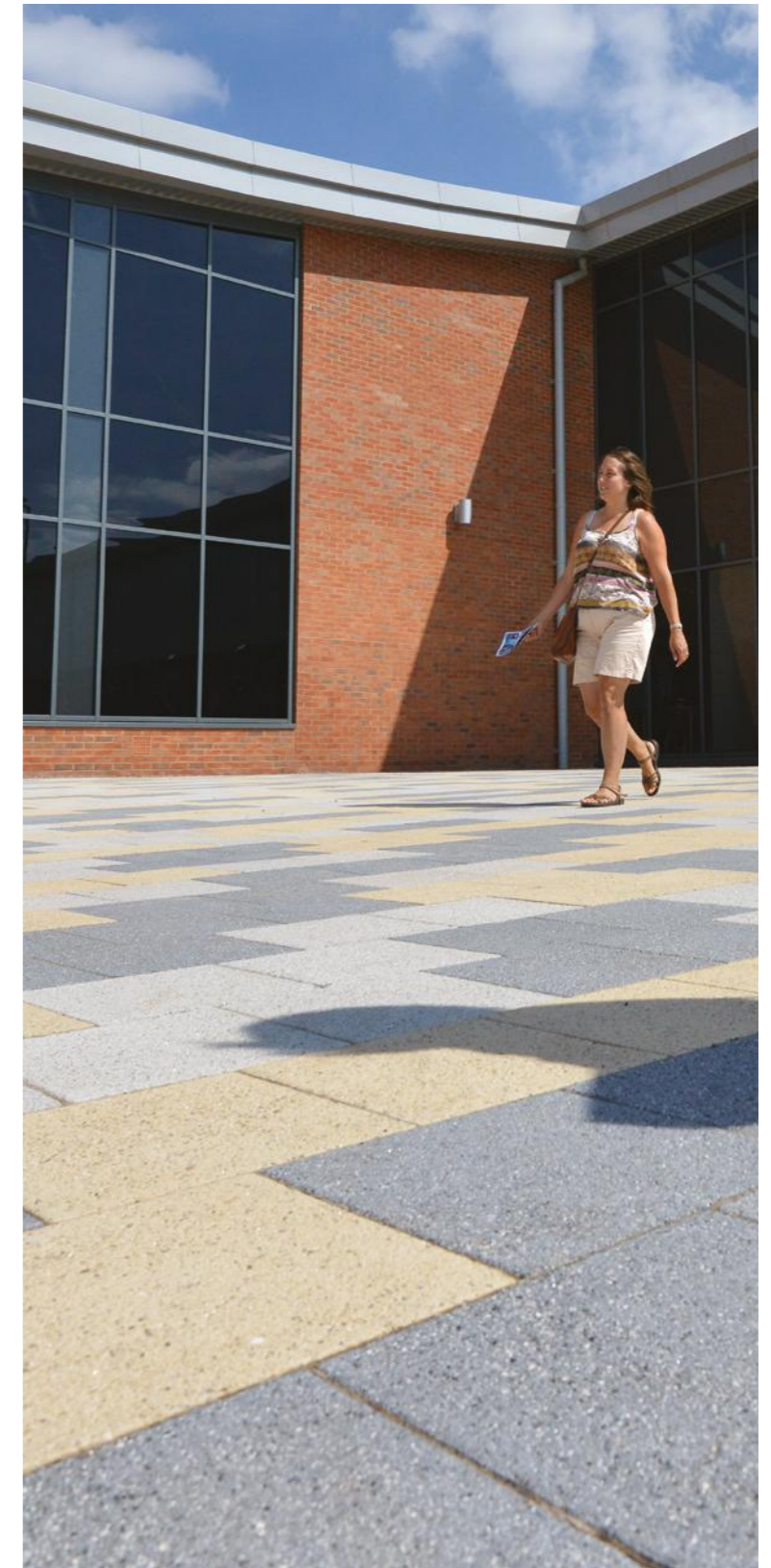
**New Priory**  
Donaghmeade, Dublin

**Products:**  
Fusion  
Mid Grey & Silver

**Architect**  
Dublin City Council

**Groundworker**  
C&A Excavations Ltd

# Sports & Leisure



**Oak Park Active Living**  
Walsall, West Midlands

**Products:**  
Fusion  
Silver, Graphite & Sandstone

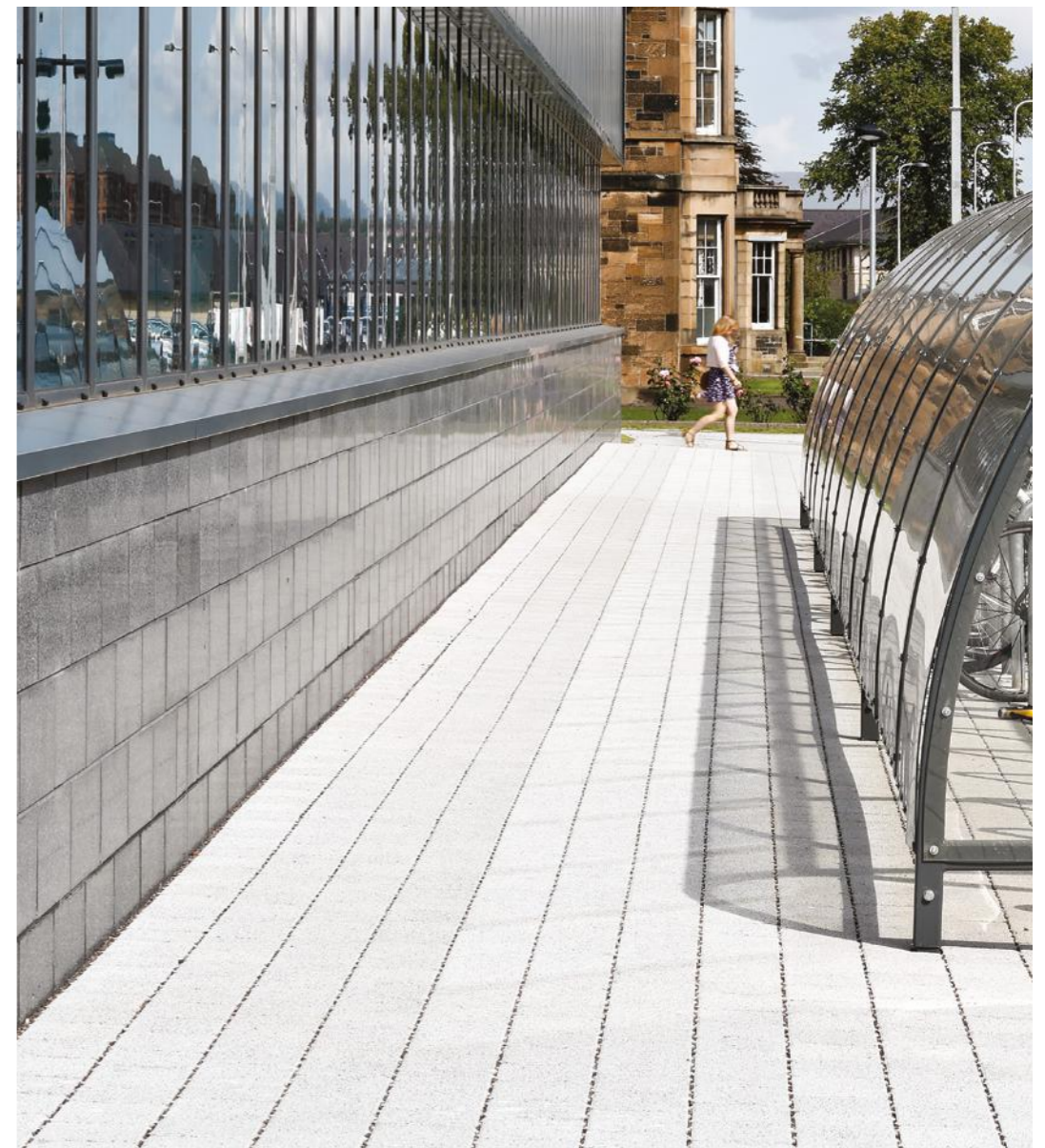
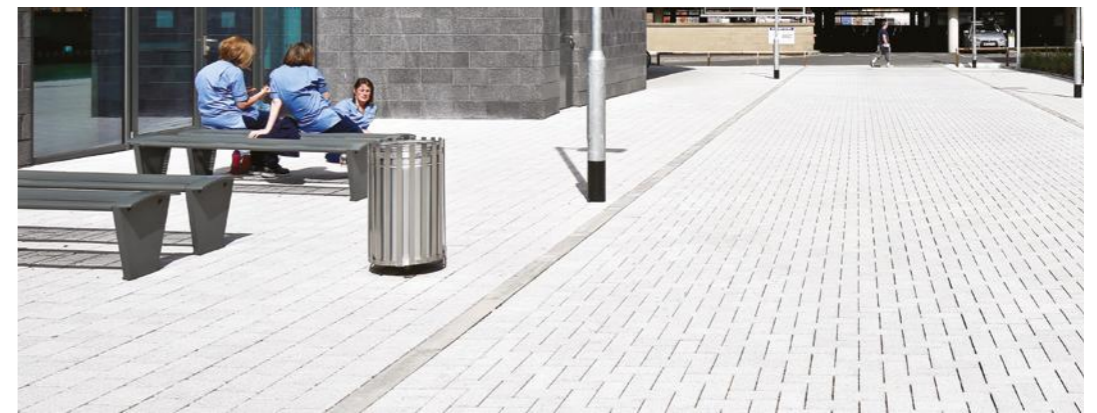
**Client**  
Lichfield District Council

**Architect**  
NORR

**Main Contractor**  
ISG

**Groundworker**  
Churngold Construction

# Healthcare



## Queen Elizabeth University Hospital Glasgow

**Products:**  
Hydropave Fusion Silver    Hydropave Sienna Duo Silver

**Client**  
NHS Greater Glasgow & Clyde

**Architect**  
Nightingales Associates

**Landscape Architect**  
Gillespies / BMJ

**Groundworker**  
Brookfield Multiplex

# Instructions & Warnings

## As referred to in Tobermore's Conditions of Sale

### CORE TERMS (PAVING & WALLING)

#### Product

All products should be carefully inspected for defects or damage upon delivery and prior to being laid or fitted.

#### Product Information

Within Tobermore, design and development of products is a continuing process, and product information is subject to change without notice. Accordingly, please check with Tobermore to ensure that the product information you have represents the most up-to-date product information.

#### Installation

All products should be installed in accordance with the latest British Standard.

#### Colour

Tobermore produces paving and walling products with excellent density and durability, however, as with all concrete products, slight colour variations are inevitable. Although every effort is made to ensure consistency of product colour, variations can occur. In particular, single colours such as Golden, Buff, Natural, Charcoal and Red will have variations. Tobermore therefore recommends that products are thoroughly mixed on site by drawing from a minimum of four pallets.

We would always recommend that when purchasing products, especially in larger quantities, that they are all ordered and manufactured in one batch to reduce the chances of getting colour variation.

Please note that the colour of new products will inevitably vary compared to those which have been installed for a period of time as weathering does take place.

All colour illustrations in Tobermore's brochures are as accurate as the printing process will allow. For a more accurate colour match please refer to actual product samples, which can be provided.

#### Efflorescence

Efflorescence is a white crystalline deposit that occurs naturally on the surface of concrete materials. Tobermore use market leading technology to significantly suppress the occurrence of efflorescence, however, if it occurs, it may mask the colour of the product for a period of time, but tends to be washed away gradually by rain. Tobermore do not replace products with efflorescence. Packs of products which have had packaging removed should always be re-covered with appropriate packaging to prevent the occurrence of secondary efflorescence.

#### Surface Scratches

Minor scuffs or bruises may occur during delivery, movement on-site, and installation (for example, during any plate vibrating process). In Tobermore's experience, these marks usually weather off through time. (EasyClean products are protected with a glue dot)

#### Ordering

To avoid waste, please ensure that your contractor accurately measures the area on site before ordering products. In Tobermore's experience, dimensions taken from a project plan can vary significantly from the final layout.

#### Manufacturing & Quality Systems

Tobermore is a BS EN ISO 9001, BS EN ISO 14001 and BES 6001 registered company. Tobermore uses an integrated management system to manage all health & safety and environmental issues.

#### Product Maintenance

Routine cleaning and maintenance is required to keep the overall appearance of products in pristine condition.

#### Laying multi-blend coloured paving blocks, flags and walling products

To achieve an even blend of colour when laying multi-blend paving blocks, flags and walling products, it is desirable to mix from three or four different pallets.

#### Queries & Complaints

Please contact one of Tobermore's Paving & Walling Centres or offices (contact details at [www.tobermore.co.uk](http://www.tobermore.co.uk)) with any queries or complaints. Any complaints must be notified to Tobermore without delay.

### CORE TERMS (PAVING ONLY)

#### Product Maintenance

Light coloured paving blocks and flags emphasise tyre marks and oil spills on the driveway. Please note that these products will need more maintenance if overall appearance is to be maintained.

#### Initial Cleaning

When an area has just been paved, allow it to settle for a few days. After this, you may wish to lightly hose down the paving to remove any excess sand or dirt. The area should then be treated with a weed killer suppressant two – three times per year as required.

#### General Cleaning

Paving requires regular maintenance, including regular sweeping to prevent the build up of detritus. Tobermore recommends that paving is cleaned two – three times per year.

For general cleaning of dirt and algae, vigorous brushing with a stiff yard brush with plenty of hot detergent solution (washing up liquid or non-bio washing powder), thoroughly rinsed with clean water, should suffice. Repeated treatment may be required for paved areas sited beneath trees or in permanent/hear permanent shade.

A light power hose at medium pressure is generally all that is required to clean general dirt and grime. Any jointing material which is removed must be replaced. Do not use high pressure powerwashers as aggressive power-washing can damage the product surface. A trial area should be tested before large scale powerwashing takes place. (Important: EasyClean products should not be pressure washed. Please refer to specific EasyClean information)

#### Moss, Lichen and Algae

Thick growths of moss or lichen must be removed first by scraping out the joints and then treating the area with a moss killer such as anti-moss paving cleaner. Anti-moss is designed to remove moss, lichens and algae. It is best applied in dry weather. After being applied it will take a few days to be fully effective. Once the moss and lichens have been killed, they can easily be brushed off. Anti-moss also leaves a residue in the sand joint which will help reduce the likelihood of re-growth. The manufacturer's instructions should always be followed when using any cleaning agent.

#### Weeds

Large weeds should be removed by hand and then the area treated with a weed killer (available from any good garden centre). Smaller weeds can then be treated directly with weed killer and these weeds should start to die within days. The manufacturer's instructions should always be followed when using any weed killing agent.

#### Block Paving Sealer

It is possible to seal block paving with a resin material which combats staining and weed growth and which also enhances colour and appearance. The acrylic sealer is sprayed onto the block paving and forms a 'skin' on top of the paving and the jointing material giving an easily maintained finish. The manufacturer's instructions should always be followed when using any sealing agent. (Important: Do not use sealers on EasyClean products)

### FOR HYDROPAVE PRODUCTS

#### Installation - Hydropave

Tobermore recommends that its Hydropave products be installed in conjunction with a BS EN 7533-13:2009 designed permeable paving system.

**Note:** A permeable paving design relies heavily on using the correct aggregates. Prior to installation, we would ask you to test both the 4/20mm coarse graded aggregate and also the 6.3-2mm bedding and jointing grit as per the relevant British Standard specification (BS EN 13242:2002). In particular, the material should be categorised as LA20 according to Table 9, SZ18 according to Table 10 and MDE15 according to Table 11 within this standard. The grit should be insoluble in dilute hydrochloric acid and should be naturally occurring material. In our experience, incorrect use of aggregates is one of the most common reasons for failure of a permeable paving system.

#### Joint Filling

All joints must be filled to the top with 6.3 – 2mm grit to prevent movement and spalling of the blocks. We recommend that after a few weeks use, any joints which have settled and are not full, are topped up with grit. Joints should be kept filled at all times. You will need approximately one tonne of grit for every 100m<sup>2</sup> of 80mm paving.

Note: Care should be taken that the permeable joints do not become contaminated as work on the scheme is completed. Special care needs to be taken when soft landscaping is carried out so that soil does not enter the joints. When this type of work is being carried out, the surface of the permeable paving should be protected by an appropriate cover to protect the joints from being contaminated.

#### Hydropave Maintenance

Please refer to Tobermore's detailed 'Permeable Paving Maintenance Guidelines' available on our website: [www.tobermore.co.uk](http://www.tobermore.co.uk)







**Contact Us**

GB: 0844 800 5736

NI: 028 7964 2411

ROI: 048 7964 2411

**Email**

[technical@tobermore.co.uk](mailto:technical@tobermore.co.uk)

[sales@tobermore.co.uk](mailto:sales@tobermore.co.uk)

Paving



Walling & Retaining Walls



Facing Brick

