



 Tobermore

Braemar

Epic paving...  
hewn from rock, ground by diamonds.





# Express Yourself

We created the Braemar range by combining the very best of natural stone with state-of-the-art manufacturing processes to unlock creative freedom for the architect and landscape designer.

**8 Granite options**

**2 Surface finishes**

**5 Paving sizes**





# Natural Aesthetics

We source granite aggregates from around the UK and beyond to create Braemar's natural granite appearance.

The high granite content in Braemar's diamond ground finish retains all the hard wearing and long-lasting attributes of natural stone.

The result is a vibrant, high quality alternative to natural stone, with similar colouration and finish, meeting the needs of designer and client alike.





# Enduring Appeal

## Your Choice

Our colour range is balanced to empower landscape designers tasked with creating diverse paving schemes. Choose single or co-ordinating colours for a rich natural appeal or add drama to open spaces with striking colour mixes.

The clean edges of Braemar block paving make a strong statement while the chamfered edge of Braemar flags add additional interest, both with the option of two sophisticated diamond ground finishes to define the mood.





# Ground Textured

## Rugged Appeal

Braemar Ground Textured finish creates an effect similar to hammered granite, with interest on the surface, which has been ground to create a uniform textured detail with granite highlights.





# Ground

## Modern Surface

Braemar Ground finish creates an attractive, smooth effect, similar to honed granite which highlights the colouring in the natural granite aggregates.



# Block Paving

A high performance paving range with the aesthetic appeal of natural granite.

- Cost-effective alternative to natural stone
- Premium block paving
- Manufactured with natural granite aggregates
- Superb hard-wearing granite surface
- Vibrant long-lasting colours
- Creates a striking, contemporary look
- Readily available with much shorter lead times than natural stone

✓ PrimeTop® ✓ Ef-Stop®



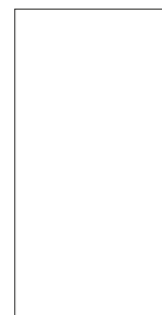
200 x 100mm



300 x 200mm



300 x 300mm



600 x 300mm

**Sizes**



80mm

**Depths**



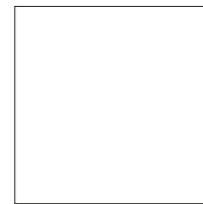


# Paving Flags

High performance paving with the aesthetic appeal of natural stone.

- Premium flag
- Diamond ground in two finish options
- Manufactured with natural granite aggregates
- Superb hard-wearing granite surface
- Vibrant long-lasting colours
- Creates a striking, contemporary look
- Readily available with much shorter lead times than natural stone
- Cost effective alternative to natural stone

✔ PrimeTop®   ✔ Ef-Stop®



400 x 400mm

**Sizes**



50mm

**Depths**



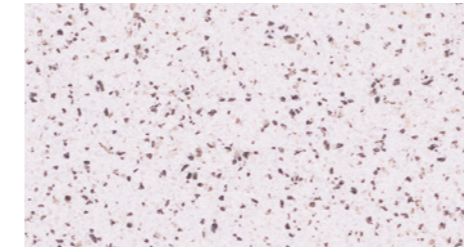


# Colour Range

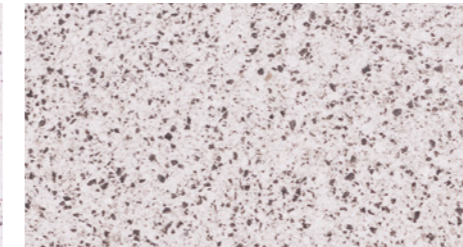


## BRAEMAR BLOCK PAVING

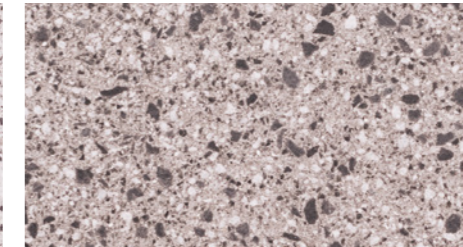
Iona White



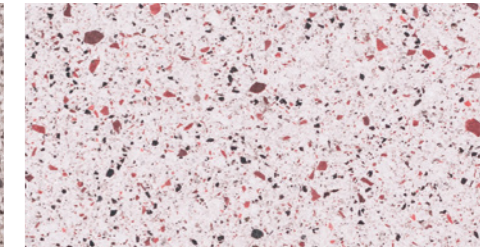
Alto Silver\*



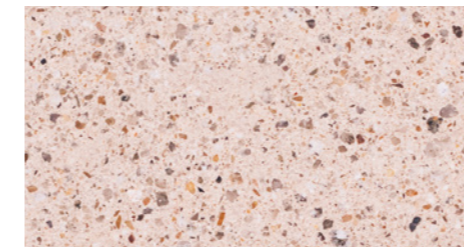
Jura Grey\*



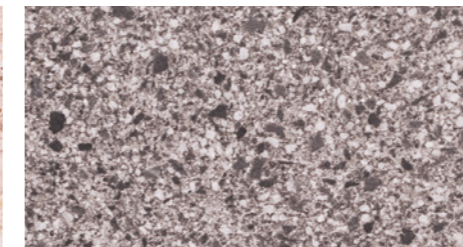
Islay Rose\*



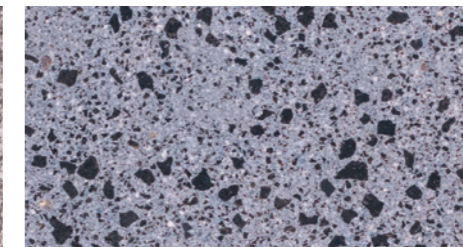
Arran Stone\*



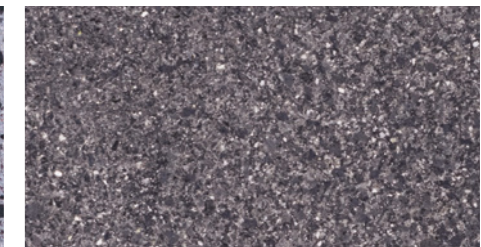
Cara Slate\*



Persa Blue\*

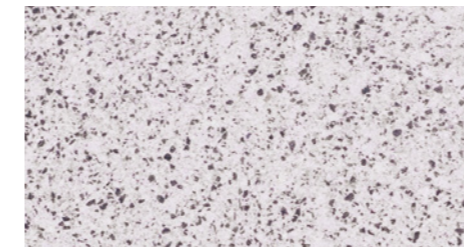


Innis Black\*

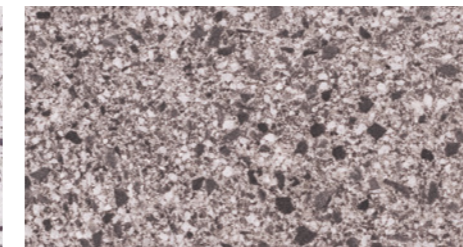


## BRAEMAR PAVING FLAGS

Alto Silver\*



Cara Slate\*



**Ordering Information:** Minimum order of 250m<sup>2</sup> for Arran Stone, Iona White, Islay Rose, Jura Grey and Persa Blue

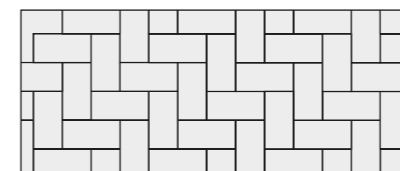
\*Manufactured with natural granite aggregates



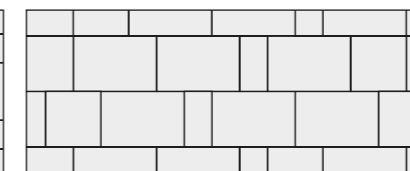
# Laying Patterns



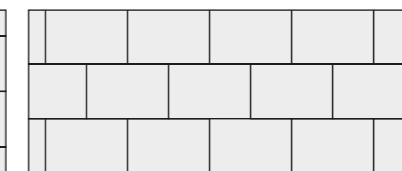
## BRAEMAR BLOCK PAVING



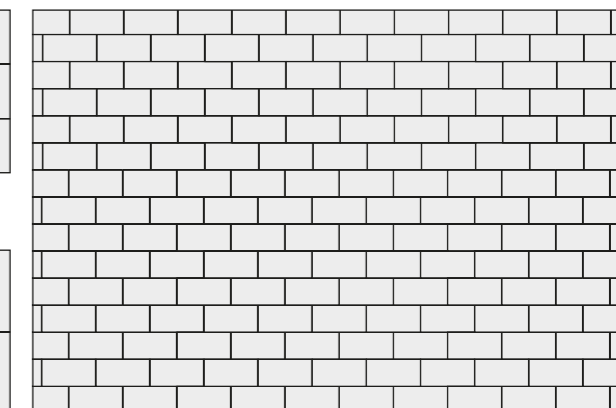
Herringbone 90° 200 x 100mm



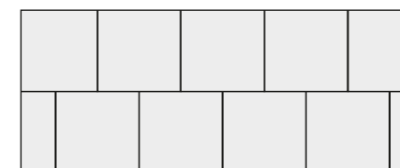
Stretcher bond, random pattern  
300x200mm, 200x200mm, 200x100mm



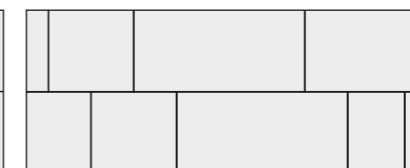
Stretcher bond 300 x 200mm



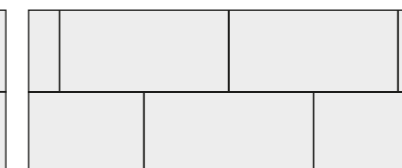
Stretcher bond 200 x 100mm



Stretcher bond 300 x 300mm

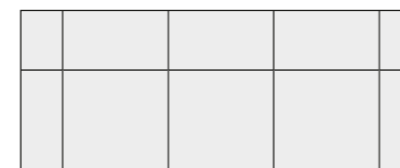


Stretcher bond, random pattern  
600x300mm, 300x300mm, 300x200mm

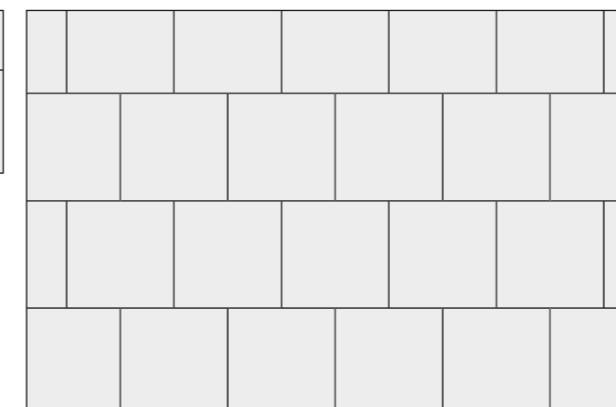


Stretcher bond 600 x 300mm

## BRAEMAR PAVING FLAGS



Stack bond 400 x 400mm



Stretcher bond 400 x 400mm



# Technical Information

## BRAEMAR BLOCK PAVING

Specification																	
<b>Product type</b>	Concrete Paving Block																
<b>Manufactured to</b>	<b>BS EN 1338:2003</b> 300x200x80mm 200x100x80mm 300x300x80mm <b>BS EN 1339:2003</b> 600x300x80mm																
<b>Surface Layer</b>	Hard-wearing surface layer with a minimum of 4mm and >390kgs/m <sup>3</sup> cement																
<b>Surface Finish</b>	Ground/Ground Textured																
<b>Granite Content in Surface Layer</b> (Not less than %)	<table border="1"> <tr> <td>Innis Black</td> <td>53.3%</td> <td>Cara Slate</td> <td>27.3%</td> </tr> <tr> <td>Jura Grey</td> <td>51.3%</td> <td>Alto Silver</td> <td>63.3%</td> </tr> <tr> <td>Iona White</td> <td>0%</td> <td>Islay Rose</td> <td>54.6%</td> </tr> <tr> <td>Arran Stone</td> <td>83.3%</td> <td>Persa Blue</td> <td>68.3%</td> </tr> </table>	Innis Black	53.3%	Cara Slate	27.3%	Jura Grey	51.3%	Alto Silver	63.3%	Iona White	0%	Islay Rose	54.6%	Arran Stone	83.3%	Persa Blue	68.3%
Innis Black	53.3%	Cara Slate	27.3%														
Jura Grey	51.3%	Alto Silver	63.3%														
Iona White	0%	Islay Rose	54.6%														
Arran Stone	83.3%	Persa Blue	68.3%														
<b>Efflorescence</b>	Minimum 12 hour vapour curing to significantly reduce the possibility of efflorescence																
<b>Slip/Skid risk</b>	Low																
<b>Installed to</b> (Externally)	<b>BS 7533-3:2005</b> 200x100x80mm 300x200x80mm 300x300x80mm <b>BS 7533-4:2006</b> 600x300x80mm																
(Internally)	Details available on request																
<b>Strength</b>	<b>BS EN 1338:2003</b> Typical tensile splitting strength of >3.6MPa <b>BS EN 1339:2003</b> Typical tensile splitting strength of >5MPa (Class 3)																
<b>n5s</b>	<b>Plus</b> Q24 110 200x100x80mm <b>Create</b> 45-20 64/400 300x200x80mm 300x300x80mm <b>Plus</b> Q24 110 600x300x80mm <b>Create</b> 45-20 64/395																
<b>Applications</b>	Refer to the relevant part of BS 7533 for the correct sub-base design and the most suitable product size for your application. Available from www.bsigroup.com																
<b>Energy used</b>	100% renewable energy																
<b>Water used</b>	100% from our rainwater harvesting system and groundwater bore hole																
<b>Recycled content</b>	<b>Not less than 10%</b> 200x100x80mm 300x200x80mm 300x300x80mm <b>Not less than 6%</b> 600x300x80mm																
<b>Carbon Footprint</b>	34kgCo <sup>2</sup> e/m <sup>2</sup>																
<b>Recyclable</b>	100% of this product can be recycled																
<b>Manufacturing &amp; Delivery</b>	From one location within the UK																
<b>brecom rating</b> www.bre.co.uk	<b>B</b> , according to the Green Guide to Specification, 4 <sup>th</sup> Edition 2009. <b>A+</b> , can be achieved when used in conjunction with a prepared recycled sub-base.																
Tobermore products are manufactured in accordance with an accredited ISO 9001:2015 Quality Management. Manufacturing facilities are accredited to ISO14001:2015 Environmental Management. The company publish environmental labels and declarations in accordance with BES 6001.																	

Stock										
product	size (mm)	edge	colours available	in stock	m <sup>2</sup> per pack	m <sup>2</sup> per slice	no. per m <sup>2</sup>	no. per pack	weight kg per pack GB	weight kg per pack NI/ROI
<b>Braemar Ground &amp; Ground Textured 80mm BIM</b>	200x100x80	Square edge	Alto Silver, Cara Slate, Innis Black	YES						
			Arran Stone, Iona White, Islay Rose, Jura Grey, Persa Blue	SO	9.6	1.6	50	480	1756	1746
	300x200x80	Square edge	Alto Silver, Cara Slate, Innis Black	YES						
			Arran Stone, Iona White, Islay Rose, Jura Grey, Persa Blue	SO	9.6	2.4	16.66	160	1756	1746
	300x300x80	Square edge	Alto Silver, Cara Slate, Innis Black	YES						
			Arran Stone, Iona White, Islay Rose, Jura Grey, Persa Blue	SO	7.2	1.8	11.11	80	1319	1309
	600x300x80	Square edge	Alto Silver, Cara Slate, Innis Black	YES						
			Arran Stone, Iona White, Islay Rose, Jura Grey, Persa Blue	SO	7.2	3.6	5.55	40	1319	1309

**BIM** - This product is available to download from our website in BIM Level 2 format.

### IMPORTANT INFORMATION

A regular maintenance programme should always be established and active for all public spaces to reduce the risk of slip/skid. Tobermore's stunning ground and ground textured finishes are created using a modern diamond grinding process which achieves a premium finish. Ground textured provides a higher level of slip resistance.

Tobermore recommend that you separate product groups using contrasting bands of colour as each product is manufactured separately and may have slight variations in colour. Light coloured blocks emphasise tyre marks and oil spills. It must be accepted that these products will need more maintenance if the overall appearance is to be maintained.

## BRAEMAR PAVING FLAGS

Specification	
<b>Product type</b>	Concrete Paving Flag
<b>Manufactured to</b>	BS EN 1339:2003
<b>Granite content</b>	Not less than 63.3% of granite aggregate in surface layer for Alto Silver; Not less than 27.3% of granite aggregate in surface layer for Cara Slate.
<b>Surface Layer</b>	Hard-wearing surface layer with a minimum of 4mm and >390kgs/m <sup>3</sup> cement
<b>Efflorescence</b>	Minimum 12 hour vapour curing to significantly reduce the possibility of efflorescence
<b>Strength</b>	Typical tensile splitting strength of >5MPa (Class 3)
<b>Slip/Skid risk</b>	Low
<b>Installed to</b> (Externally)	BS 7533-4:2006
(Internally)	Details available on request
<b>n5s</b>	<b>Plus</b> Q25 315 <b>Create</b> 45-20-64/395
<b>Applications</b>	Refer to the relevant part of BS 7533 for the correct sub-base design and the most suitable product size for your application. Available from www.bsigroup.com
<b>Energy used</b>	100% renewable energy
<b>Water used</b>	100% from our rainwater harvesting system and groundwater bore hole
<b>Recycled content</b>	Not less than 6%
<b>Carbon Footprint</b>	22kgCo <sup>2</sup> e/m <sup>2</sup>
<b>Recyclable</b>	100% of this product can be recycled
<b>Manufacturing &amp; Delivery</b>	From one location within the UK
<b>brecom rating</b> www.bre.co.uk	<b>A</b> , according to the Green Guide to Specification, 4 <sup>th</sup> Edition 2009. <b>A+</b> , can be achieved by using a recycled sub-base.
Tobermore products are manufactured in accordance with an accredited ISO 9001:2015 Quality Management. Manufacturing facilities are accredited to ISO14001:2015 Environmental Management. The company publish environmental labels and declarations in accordance with BES 6001.	

Stock									
product	size (mm)	edge	colours available	in stock	m <sup>2</sup> per pack	no. per m <sup>2</sup>	no. per pack	weight kg per pack GB	weight kg per pack NI/ROI
<b>Braemar Ground &amp; Braemar Ground Textured BIM</b>	400 x 400 x 50	Chamfered	Alto Silver, Cara Slate	YES	3.2	6.25	20	397	394

**BIM** - This product is available to download from our website in BIM Level 2 format.

### IMPORTANT INFORMATION

A regular maintenance programme should always be established and active for all public spaces to reduce the risk of slip/skid. Tobermore's stunning ground and ground textured finishes are created using a modern diamond grinding process which achieves a premium finish. Ground textured provides a higher level of slip resistance.

Tobermore recommend that you separate product groups using contrasting bands of colour as each product is manufactured separately and may have slight variations in colour. Light coloured blocks emphasise tyre marks and oil spills. It must be accepted that these products will need more maintenance if the overall appearance is to be maintained.



# PrimeTop

PrimeTop is the high performance feature which differentiates Tobermore from standard concrete paving. Tobermore's PrimeTop is manufactured with a premium, hard-wearing surface layer which adds significant performance benefits.

## PrimeTop Layer

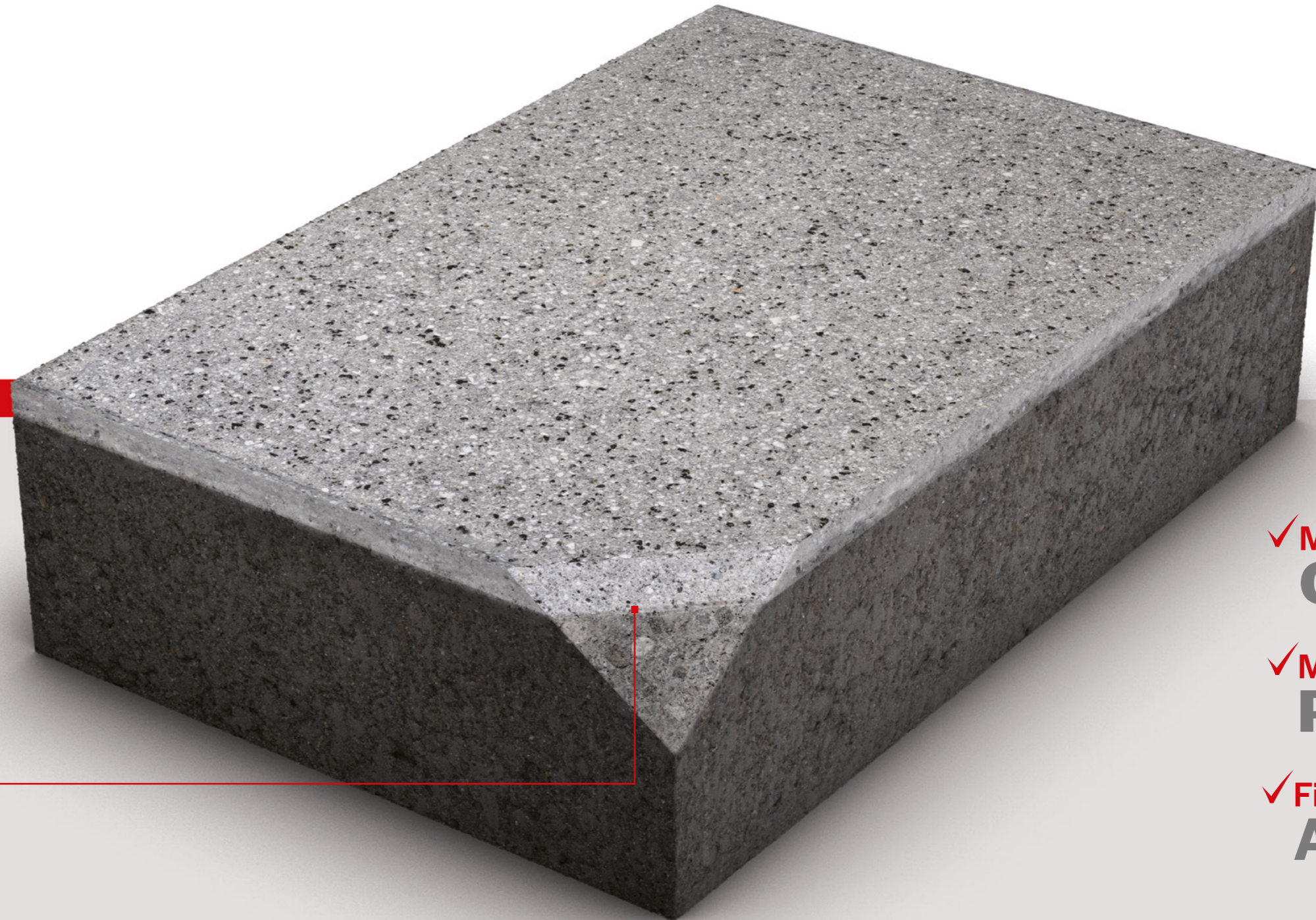
### Hard-wearing Surface

The PrimeTop surface layer has a dense composition of finer aggregates, hard sand and a higher percentage of cement. This hardened surface layer has enhanced strength and increased resistance to wear and tear, for both pedestrian and vehicular traffic.

We produce two different material mixes; the PrimeTop layer and a robust base layer formulated for optimum structural performance. Both layers are formed simultaneously, producing an inseparable bond that stands the test of time.

### Aesthetic appeal & enhanced weathering

The PrimeTop surface layer contains a high concentration of pigment creating vibrant colour and exceptional UV performance leading to enhanced weathering properties. Tobermore PrimeTop is renowned for its superior long-term retention of colour and visual appeal.



✓ **More  
Cement**

✓ **More  
Pigment**

✓ **Finer  
Aggregates**






## COMBATTING EFFLORESCENCE

Every aspect of our product's performance is researched and optimised to provide an excellent long-lasting appearance. To meet the challenge of efflorescence, we have invested in manufacturing technology which enables us to produce virtually efflorescence free paving.

Efflorescence is perhaps the single biggest problem encountered with decorative concrete paving products. The cause of efflorescence is simply a chemical reaction between the cement in the concrete and rainwater causing the formation of calcium carbonate. This white, crystalline substance stains the surface and spoils the appearance of the paving.

In the Tobermore manufacturing process, we cure our products in a warm vapour atmosphere for 12 hours, which ensures that efflorescence is dramatically reduced. Moreover, the vapour curing also enhances the colour, improves the strength and cures the products much faster, allowing products to be used almost immediately.



 **Ef-Stop**  
Look for products with the Ef-Stop logo



Competitor's paving



### Vapour Cured

The Ef-Stop protection includes an intense vapour curing process. Vapour penetrates to the core of the paver.



## 100% SUPPORT

ServiceSure is Tobermore's unique package of customer service benefits developed to ensure an efficient, consistent and streamlined experience. This unbeatable, seamless service follows your project from initial enquiry to delivery and beyond, keeping you fully informed at every stage.



**Fast Quote**  
We always turn around quotes within one working day.



**Unrivalled availability**  
With more stock on the ground and a faster turnaround on batch controlled orders we offer market leading availability on a full range of paving and walling products. Because we manufacture everything on one site we can combine mixed product loads for customer-friendly logistics.



**Easy Spec**  
Our specification team is on hand across the UK and Ireland to support you with technical advice, design support and samples. Tobermore's comprehensive website provides additional access to useful information. This is backed up by a package of the industry's leading specification tools including NBS Plus/Create and BIM level 2.



**Intelligent Ordering**  
Every order placed with Tobermore is sense checked on receipt by one of our trusted advisors who will liaise with you directly to ensure quantity, format and delivery details are right first time. All orders will receive an Order Confirmation with clear product and pricing information.



**Delivery excellence**  
You can trust Tobermore to fulfil your order on time and in full as agreed. This industry leading service is proven week in week out and in 2018 we achieved outstanding delivery performance with 99.47% of orders on time and in full.



**Contact Us**

GB: 0844 800 5736

NI: 028 7964 2411

ROI: 048 7964 2411

**Email**

[technical@tobermore.co.uk](mailto:technical@tobermore.co.uk)

[sales@tobermore.co.uk](mailto:sales@tobermore.co.uk)

[tobermore.co.uk](http://tobermore.co.uk)

