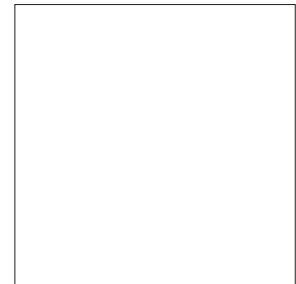


Hydropave Textured Flags

Permeable paving flags with a modern textured surface.

Hydropave Textured Flags provide a practical modern design with an attractive textured surface in a choice of neutral tones.

- Functions as a SuDS paving system
- Superb hard-wearing textured surface
- Vibrant long-lasting colours
- Natural appearance



400 x 400mm

Sizes



65mm

Depths

T
Textured

Finish



Pedestrian Use



Light Traffic



Commercial Traffic

Refer to relevant guidance in BS 7533



Hydropave Textured Flags



Specification

 **PrimeTop**  **Ef-Stop**

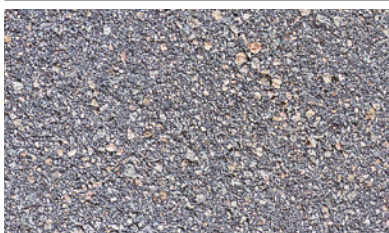
Product type	Concrete Paving Flag
Manufactured to	BS EN 1339:2003
Surface Layer	Hard-wearing surface layer with a minimum of 4mm and >390kgs/m ³ cement
Efflorescence	Minimum 12 hour vapour curing to significantly reduce the possibility of efflorescence
Frost Protection	YES
Drainage Void Width	2.7% to accommodate correct grit grading, reduce maintenance and maximise drainage flow rate
Strength	Typical tensile splitting strength of >5MPa (Class 3)
Slip/Skid risk	Extremely Low
Installed to	Specific installation instructions are available from Tobermore
BS	Plus Q25 315 Create 45-20-64/395
Applications	Refer to the relevant part of BS 7533 for the correct sub-base design for your application. Available from www.bsigroup.com
Energy used	100% renewable energy
Water used	100% from our rainwater harvesting system and groundwater bore hole
Recycled content	Not less than 6%
Carbon Footprint	28kgCO ₂ e/m ²
Recyclable	100% of this product can be recycled
Manufacturing & Delivery	From one location within the UK
breem rating www.bre.co.uk	A , according to the Green Guide to Specification, 4 th Edition 2009. A+ , can be achieved by using a recycled sub-base.

Tobermore products are manufactured in accordance with an accredited ISO 9001:2015 Quality Management. Manufacturing facilities are accredited to ISO14001:2015 Environmental Management. The company publish environmental labels and declarations in accordance with BES 6001.

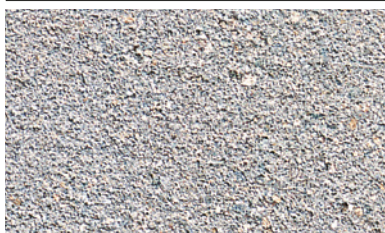
Stock

product	size (mm)	finish	edge	colours available	in stock	m ² per pack	m ² per slice	no. per m ²	no. per pack	weight kg per pack GB	weight kg per pack NI/ROI
Hydropave Textured Flags	400 x 400 x 65	Textured	Chamfered	Charcoal, Natural	SO	10.56	3.52	6.25	66	1556	1546

Charcoal



Natural



Contact Us

GB: 0844 800 5736
NI: 028 7964 2411
ROI: 048 7964 2411

Email

technical@tobermore.co.uk
sales@tobermore.co.uk

tobermore.co.uk