






# Braemar Block Paving

A high performance paving range with the aesthetic appeal of natural granite.

Manufactured from carefully selected premium aggregates, Braemar is diamond ground to produce two distinct finishes in an extensive block paving size range in a choice of granite colours.

- Cost-effective alternative to natural stone
- Premium block paving
- Manufactured with natural granite aggregates
- Superb hard-wearing granite surface
- Vibrant long-lasting colours
- Creates a striking, contemporary look
- Readily available with much shorter lead times than natural stone

 PrimeTop®  Ef-Stop®

<b>GT</b> Ground Textured <b>Finish</b>	<b>G</b> Ground <b>Also available as</b>	 Steps	 Pedestrian Use	 Light Traffic	 Commercial Traffic	 BIM Level 2
--	--	--	--	---	--	---

Refer to relevant guidance in BS 7533



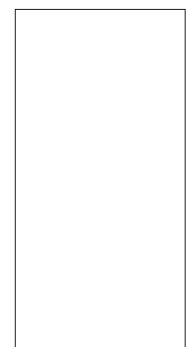
200 x 100mm



300 x 200mm



300 x 300mm



600 x 300mm

**Sizes**



80mm

**Depths**



# Braemar Block Paving



## Specification

 **PrimeTop®**     **Ef-Stop®**

<b>Product type</b>	Concrete Paving Block		
<b>Manufactured to</b>	<b>BS EN 1338:2003</b>	300x200x80mm 200X100X80mm 300X300X80mm	
	<b>BS EN 1339:2003</b>	600X300X80mm	
<b>Surface Layer</b>	Hard-wearing surface layer with a minimum of 4mm and >390kg/m <sup>3</sup> cement		
<b>Surface Finish</b>	Ground/Ground Textured		
<b>Granite Content in Surface Layer</b> (Not less than %)	Innis Black	53.3%	Cara Slate
	Jura Grey	51.3%	Alto Silver
	Iona White	0%	Islay Rose
	Arran Stone	83.3%	Persia Blue
<b>Efflorescence</b>	Minimum 12 hour vapour curing to significantly reduce the possibility of efflorescence		
<b>Slip/Skid risk</b>	Low		
<b>Installed to</b>	(Externally)	<b>BS 7533-3:2005</b>	200X100X80mm 300X200X80mm 300X300X80mm
	(Internally)	<b>BS 7533-4:2006</b>	600X300X80mm
	Details available on request		
<b>Strength</b>	<b>BS EN 1338:2003</b>	Typical tensile splitting strength of >3.6MPa	
	<b>BS EN 1339:2003</b>	Typical tensile splitting strength of >5MPa (Class 3)	
<b>BS</b>	<b>Plus</b> Q24 110	200X100X80mm	
	<b>Create</b> 45-20 64/400	300X200X80mm 300X300X80mm	
	<b>Plus</b> Q24 110	600X300X80mm	
	<b>Create</b> 45-20 64/395		
<b>Applications</b>	Refer to the relevant part of BS 7533 for the correct sub-base design and the most suitable product size for your application. Available from <a href="http://www.bsigroup.com">www.bsigroup.com</a>		
<b>Energy used</b>	100% renewable energy		
<b>Water used</b>	100% from our rainwater harvesting system and groundwater bore hole		
<b>Recycled content</b>	<b>Not less than 10%</b>	200X100X80mm 300X200X80mm 300X300X80mm	
	<b>Not less than 6%</b>	600X300X80mm	
<b>Carbon Footprint</b>	34kgCo <sub>2</sub> e/m <sup>2</sup>		
<b>Recyclable</b>	100% of this product can be recycled		
<b>Manufacturing &amp; Delivery</b>	From one location within the UK		
<b>breeam rating</b> <a href="http://www.bre.co.uk">www.bre.co.uk</a>	<b>B</b> , according to the Green Guide to Specification, 4 <sup>th</sup> Edition 2009. <b>A</b> , can be achieved when used in conjunction with a prepared recycled sub-base.		

Tobermore products are manufactured in accordance with an accredited ISO 9001:2015 Quality Management. Manufacturing facilities are accredited to ISO14001:2015 Environmental Management. The company publish environmental labels and declarations in accordance with BES 6001.

### Contact Us

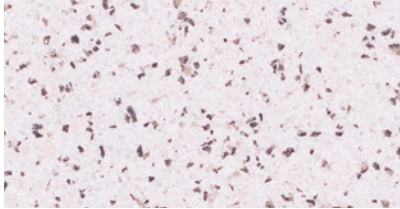
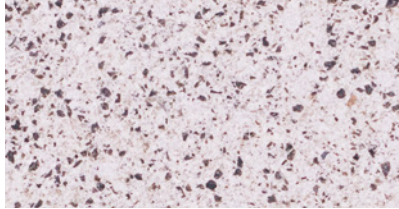
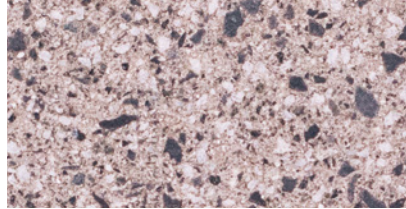
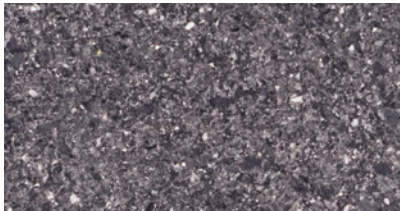
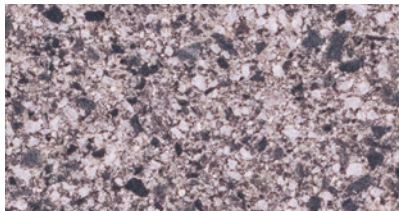
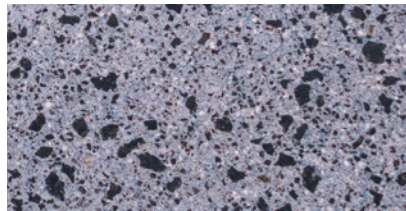
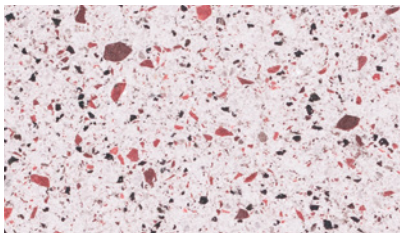
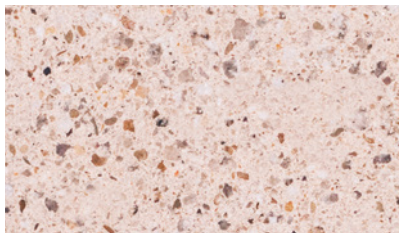
GB: 0844 800 5736  
NI: 028 7964 2411  
ROI: 048 7964 2411

### Email

[technical@tobermore.co.uk](mailto:technical@tobermore.co.uk)  
[sales@tobermore.co.uk](mailto:sales@tobermore.co.uk)

[tobermore.co.uk](http://tobermore.co.uk)

# Braemar Block Paving

**Iona White<sup>†</sup>**

**Alto Silver<sup>†</sup>**

**Jura Grey<sup>††</sup>**

**Innis Black<sup>†</sup>**

**Cara Slate<sup>†</sup>**

**Persa Blue<sup>††</sup>**

**Islay Rose<sup>††</sup>**

**Arran Stone<sup>††</sup>**


## Stock

product	size (mm)	edge	colours available	in stock	m <sup>2</sup> per pack	m <sup>2</sup> per slice	no. per m <sup>2</sup>	no. per pack	weight kg per pack GB	weight kg per pack NI/ROI
<b>Braemar Ground &amp; Ground Textured 80mm BIM</b>	200 x 100 x 80	Square edge	Alto Silver, Cara Slate, Innis Black	YES	9.6	1.6	50	480	1756	1746
			Arran Stone, Iona White, Islay Rose, Jura Grey, Persa Blue	SO						
	300 x 200 x 80	Square edge	Alto Silver, Cara Slate, Innis Black	YES	9.6	2.4	16.66	160	1756	1746
			Arran Stone, Iona White, Islay Rose, Jura Grey, Persa Blue	SO						
300 x 300 x 80	Square edge	Alto Silver, Cara Slate, Innis Black	YES	7.2	1.8	11.11	80	1319	1309	
		Arran Stone, Iona White, Islay Rose, Jura Grey, Persa Blue	SO							
600 x 300 x 80	Square edge	Alto Silver, Cara Slate, Innis Black	YES	7.2	3.6	5.55	40	1319	1309	
		Arran Stone, Iona White, Islay Rose, Jura Grey, Persa Blue	SO							

**BIM** - This product is available to download from our website in BIM Level 2 format.

## IMPORTANT INFORMATION

A regular maintenance programme should always be established and active for all public spaces to reduce the risk of slip/skid. Tobermore's stunning ground and ground textured finishes are created using a modern diamond grinding process which achieves a premium finish.

Ground textured provides a higher level of slip resistance. Tobermore recommend that you separate product groups using contrasting bands of colour as each product is manufactured separately and may have slight variations in colour.

Light coloured blocks emphasise tyre marks and oil spills. It must be accepted that these products will need more maintenance if the overall appearance is to be maintained.

**\* Ordering Information** - Minimum order of 250m<sup>2</sup> for Arran Stone, Iona White, Islay Rose, Jura Grey and Persa Blue

**† Product Information** - Manufactured with natural granite aggregates

## Contact Us

GB: 0844 800 5736  
 NI: 028 7964 2411  
 ROI: 048 7964 2411

## Email

technical@tobermore.co.uk  
 sales@tobermore.co.uk

[tobermore.co.uk](http://tobermore.co.uk)