

Braemar Flags



SCAN HERE

High performance paving with the aesthetic appeal of natural stone.

- Premium flag
- Diamond ground finish
- Manufactured with natural granite aggregates
- Superb hard-wearing granite surface
- Vibrant long-lasting colour
- Creates a striking, contemporary look
- Readily available with much shorter lead times than natural stone
- Cost effective alternative to natural stone



600 x 400mm



50mm

Depths**✓ PrimeTop®** **✓ Ef-Stop®****G**

Ground

Finish

Pedestrian
UseLight
TrafficBIM
Level 2

Refer to relevant guidance in BS 7533



Braemar Flags



Specification

 **PrimeTop**  **Ef-Stop**

Product type	Concrete Paving Flag
Manufactured to	BS EN 1339:2003
Granite content	Not less than 63.3% of granite aggregate in surface layer
Surface Layer	Hard-wearing surface layer with a minimum of 4mm and >390kgs/m ³ cement
Efflorescence	Minimum 12 hour vapour curing to significantly reduce the possibility of efflorescence
Strength	Typical tensile splitting strength of >5MPa (Class 3)
Slip/Skid risk	Low
Installed to	(Externally) BS 7533-4:2006 (Internally) Details available on request
BS	Plus Q25 315 Create 45-20-64/395
Tolerances on Dimensions (mm)	Length ±2mm, width ±2mm, thickness ±3mm
Abrasion Resistance	Class 3
Durability (Freeze-thaw)	Class 3
External Fire Performance	Deemed to satisfy. See Commission Decision 2000/553/EC
Reaction to fire	Class A1
Applications	Refer to the relevant part of BS 7533 for the correct sub-base design and the most suitable product size for your application. Available from www.bsigroup.com
Energy used	100% renewable energy
Water used	100% from our rainwater harvesting system and groundwater bore hole
Recycled content	Not less than 6%
Carbon Footprint	22kgCo ² e/m ²
Recyclable	100% of this product can be recycled
Manufacturing & Delivery	From one location within the UK
breeam rating www.bre.co.uk	A , according to the Green Guide to Specification, 4 th Edition 2009. A+ , can be achieved by using a recycled sub-base.

Tobermore products are manufactured in accordance with an accredited ISO 9001:2015 Quality Management. Manufacturing facilities are accredited to ISO14001:2015 Environmental Management. The company publish environmental labels and declarations in accordance with BES 6001.

Contact Us

GB: 0844 800 5736
NI: 028 7964 2411
ROI: 048 7964 2411

Email

technical@tobermore.co.uk
sales@tobermore.co.uk

tobermore.co.uk

Braemar Flags

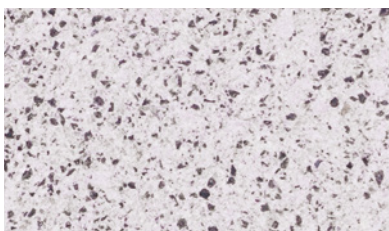


Stock

product	size (mm)	edge	colours available	in stock	m ² per pack	no. per m ²	no. per pack	weight kg per pack GB	weight kg per pack NI/ROI
Braemar Ground Flags	600 x 400 x 50	Chamfered	Alto Silver	YES	4.8	4.16	20	589	584
BIM									

BIM - This product is available to download from our website in BIM Level 2 format.

Alto Silver



IMPORTANT INFORMATION

A regular maintenance programme should always be established and active for all public spaces to reduce the risk of slip/skid. Tobermore's stunning ground and ground textured finishes are created using a modern diamond grinding process which achieves a premium finish. Ground textured provides a higher level of slip resistance.

Light coloured flags emphasise tyre marks and oil spills. It must be accepted that these products will need more maintenance if the overall appearance is to be maintained.

Contact Us

GB: 0844 800 5736
 NI: 028 7964 2411
 ROI: 048 7964 2411

Email

technical@tobermore.co.uk
 sales@tobermore.co.uk