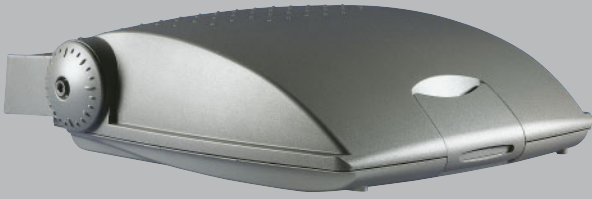


NEOS 1 | 2 | 3



Design: Michel Tortel



CHARACTERISTICS – FLOODLIGHT

Tightness level:	IP 66 ^(*)
Impact resistance (glass):	IK 08 ^(**)
Aerodynamic resistance (CxS):	
- Neos 1	0,08 m ²
- Neos 2	0,13 m ²
- Neos 3	0,19 m ²
Nominal voltage:	230 V – 50 Hz
Electrical class:	I or II ^(*)
Weight (empty):	
- Neos 1	1,8 kg
- Neos 2	5,0 kg
- Neos 3	8,0 kg

^(*) according to IEC - EN 60598

^(**) according to IEC - EN 62262

ADVANTAGES

- Three sizes
- Numerous symmetrical and asymmetrical reflectors
- IP 66 tightness level
- Aluminium and glass

OPTIONS

- Louvres
- Protection grid
- Structured glass protector
- Coloured glass protector
- Anti-vandalism locking system
- Sottogronda bracket for mounting on a façade



Neos 1

Neos 2

Neos 3

DESCRIPTION

Range of high-tightness floodlights (IP 66) available in 3 sizes: the Neos 1 is suitable for lamps up to 150 W, the Neos 2 up to 250 W, and the Neos 3 up to 600 W.

The floodlight is composed of a two-piece housing made of painted die-cast aluminium alloy. The housing contains a reflector made of polished and anodised aluminium and a removable control gear plate.

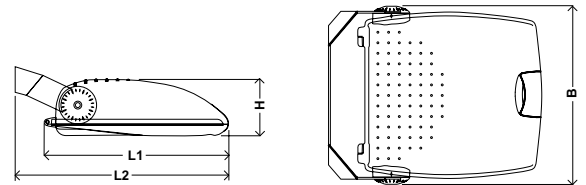
The tempered glass protector is sealed onto the cover. The mounting bracket allows the precise adjustment of position on site.

Coating: polyester powder

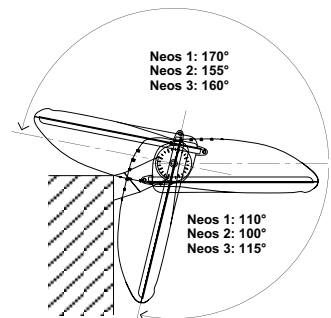
Colour: AKZO grey 900 sanded

Other colours on request

MOUNTINGS



	H	L1	L2	B
Neos 1	100 mm	325 mm	360 mm	320 mm
Neos 2	140 mm	390 mm	441 mm	398 mm
Neos 3	160 mm	520 mm	600 mm	500 mm



THE RIGHT LIGHTING

The Neos range of floodlights provides a complete mastery of light for a wide range of applications thanks to the many reflectors and numerous photometric accessories available. The mounting bracket allows the precise adjustment of position on site.

ELEGANCE AND ROBUSTNESS

The floodlights in the Neos range have a refined profile, a harmonious design that blends in perfectly with all types of environments. Aluminium and glass, the materials chosen for the floodlight, combine robustness, efficiency and elegance.

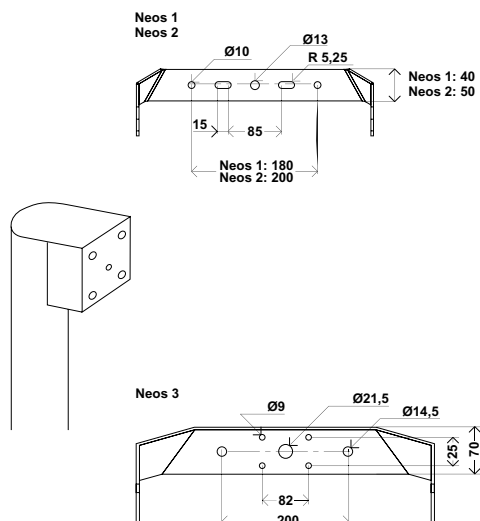
ACCESSORIES

Various types of louvres, coloured glass, structured glass and protection grids are available as an option.

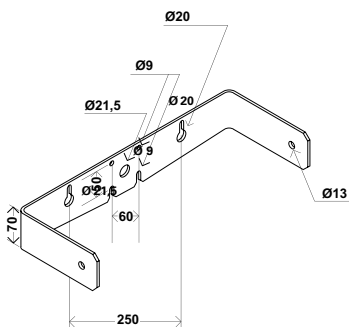
MAINTENANCE

A closing lever made of die-cast aluminium enables the control gear and the lamp to be accessed in a single move. No tools are required for this operation. Optionally, however, it is possible to fit a locking system to the closing lever.

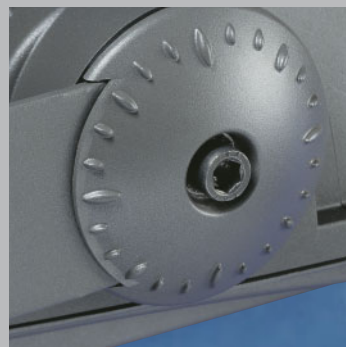
MOUNTINGS



Option: Sottogronda bracket



The Sottogronda bracket has been carefully designed for mounting on a façade. The slots facilitate handling during installation (prior to mounting with 4 M8 screws)



NEOS



The die-cast aluminium closing lever provides access, in a single move, to the control gear and the lamp.

Silicone gasket ensuring an IP 66 tightness level for the optical compartment and control gear compartment.

Reflector made of polished and anodised aluminium.

Housing made of painted die-cast aluminium alloy.

Visual marking for adjustment of inclination on site.

Mounting bracket made of painted steel.

Removable control gear plate.

Protector made of tempered glass, sealed onto the cover.

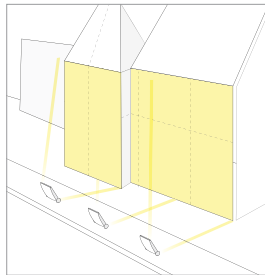
PHOTOMETRY

The Neos range of floodlights provides lighting designers, aiming to control light perfectly, with the ideal solution for architectural illumination projects.

The numerous light distributions available – whether intensive or extensive, symmetrical or asymmetrical –

to which numerous accessories can be added, enable them to play with light, with virtually no loss of performance.

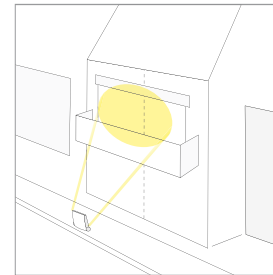
Our design offices can advise you in order to identify the solution with “the right lighting”.



Neos 1: 1659, 1754
Neos 2: 1364
Neos 3: 1312



Neos 2: 1738
Neos 3: 1734



Neos 1: 1639
Neos 2: 1703
Neos 3: 1700, 1216



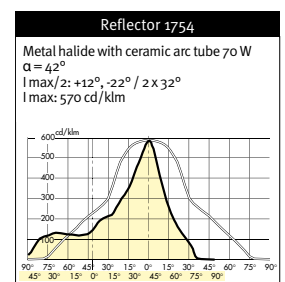
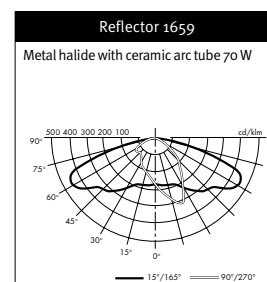
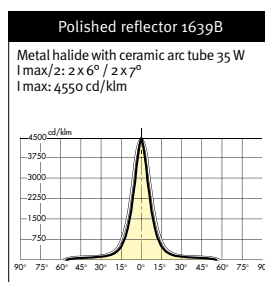
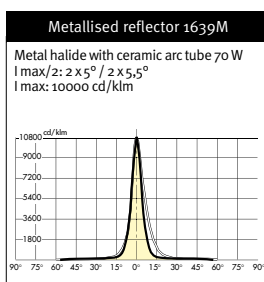
NEOS 1 LAMPS – REFLECTORS

Reflector	Metal halide with ceramic arc tube			High-pressure sodium ^(a)	
	35 W	70 W	150 W	70 W	
1639	✓		✓		
1659	✓	✓	✓	✓	
1754	✓		✓		

^(a) Double-ended lamps: please contact us

G12 | E27

LIGHT DISTRIBUTION





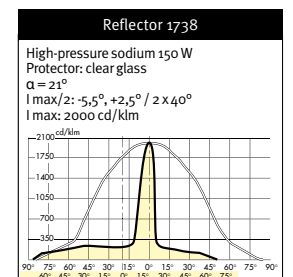
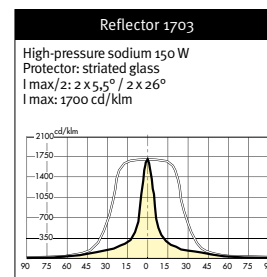
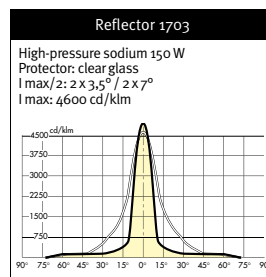
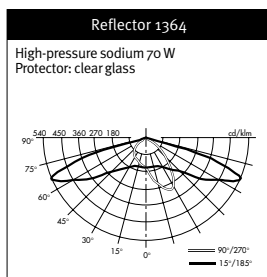
NEOS 2 LAMPS – REFLECTORS

Reflector	Metal halide with ceramic arc tube				Metal halide ^(a)		High-pressure sodium		
	35 W	70 W	100 W	150 W	250 W	70 W	100 W	150 W	
1364	✓	✓	✓	✓			✓	✓	
1703		✓	✓	✓	✓		✓	✓	
1738		✓	✓	✓	✓		✓	✓	

^(a) Double-ended lamps: please contact us

G12 E27/E40 Double-ended lamp

LIGHT DISTRIBUTION



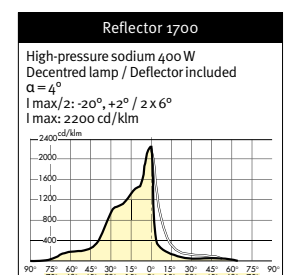
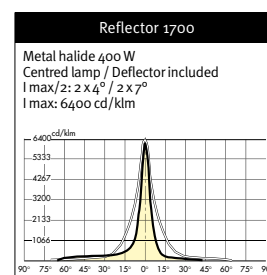
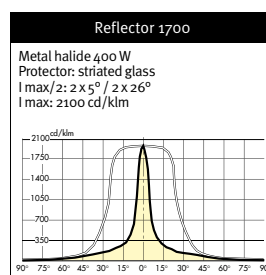
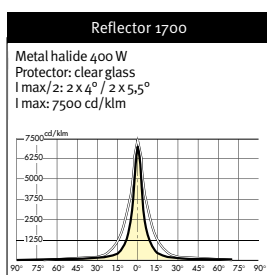
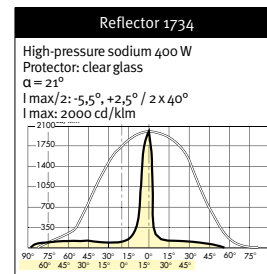
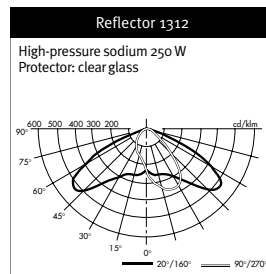
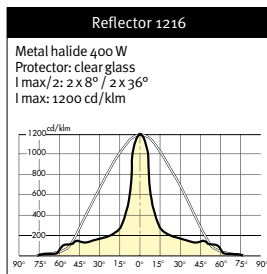
NEOS 3 LAMPS – REFLECTORS

Reflector	Metal halide		High-pressure sodium		
	250 W	400 W	250 W	400 W	600 W
1216	✓	✓	✓	✓	✓
1312	✓	✓ ^(a)	✓	✓ ^(a)	
1700	✓	✓	✓	✓	✓
1734	✓	✓	✓	✓	✓

^(a) Control gear not included

E40

LIGHT DISTRIBUTION







FLOODLIGHTS THAT COMBINE AESTHETICS AND EFFICIENCY

NEOS
Waterloo
Belgium





THE RIGHT LIGHTING