

The Coda seating range offers infinite configuration flexibility to allow specification for every public space.

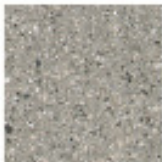
The range is conceived as a kit of parts starting with 'platforms' that can be upgraded for particular tasks or environments. Thus benches are simple concrete items that can have timber elements added, also arms and backs in many combinations. The co-ordinated forms ensure visual consistency with other seating from the family.

The shapes of the seating range are subtle in form yet supremely robust and functional. The various elements are supported on minimal bases and therefore the furniture is intended to visually 'float', reducing the clutter of public spaces and remaining in the background in order to showcase human activity.

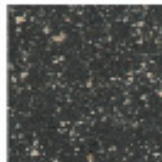
- Ø Available in three complementary concrete colours for design flexibility and to coordinate with Marshalls Metrolinia and Conservation paving.
- Ø Seating timber is Iroko, a durable untreated timber that is long lasting and delivers long term value.
- Ø The standard subtle, yet luxurious, colour for bench arms, seat backs and cycle stands is RAL 9007 'Grey Aluminium'.
- Ø The signature Coda slash colour contrast can aid DDA compliance and mask low level street dirt and rain spatter.



SILVER GREY



MID GREY



ANTHRACITE



The Coda range is specified for long life, performance and long term value in any public realm environment.

- Ø The concrete is a proprietary Marshalls specification that is highly durable with a predicted life of at least 50 years.
- Ø Factory applied ProtectGuard coating protects against graffiti, dirt and staining, limits chewing-gum adhesion, moss and lichen growth and enables easier cleaning.
- Ø Arms are BS EN1461 galvanised steel to protect against erosion for a long, maintenance free life.
- Ø Standard seat arms and backs are painted in RAL 9007 'Grey Aluminium'.
- Ø Iroko timber is ethically sourced through a Chain of Custody validated by the Timber Trade Federation.
- Ø All seating elements incorporate a root fixed leg design for secure installation in the most demanding public spaces.
- Ø The steel, concrete and timber furniture materials are fully recyclable.
- Ø SketchUp files and NBS data available on Woodhouse website
- Ø The robust, long lasting materials should require little maintenance however should repair be required a colour matched concrete repair kit can be supplied, individual timber or steel elements can be replaced and paintwork can be touched-up.

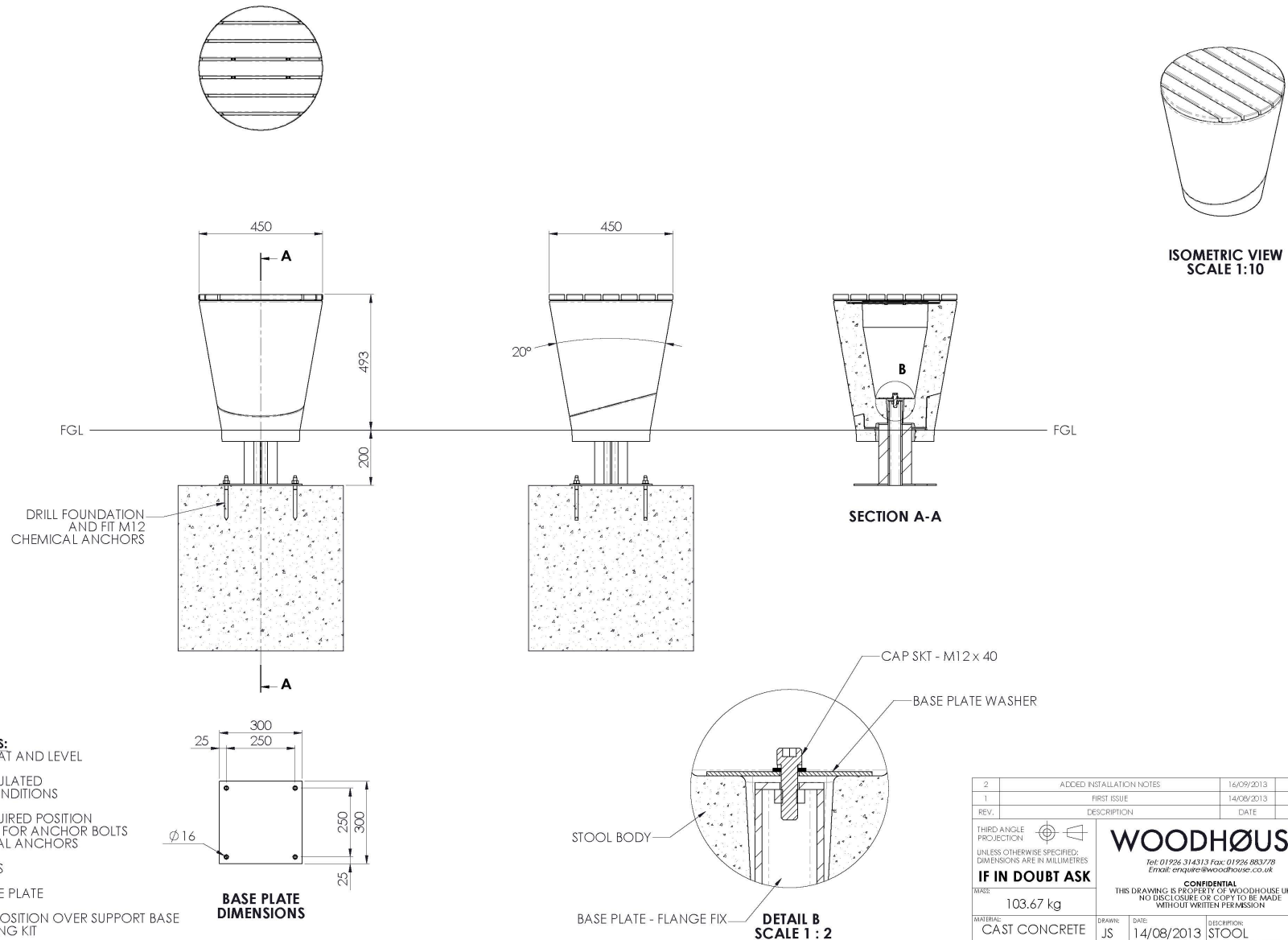



Dimension and Material Specification

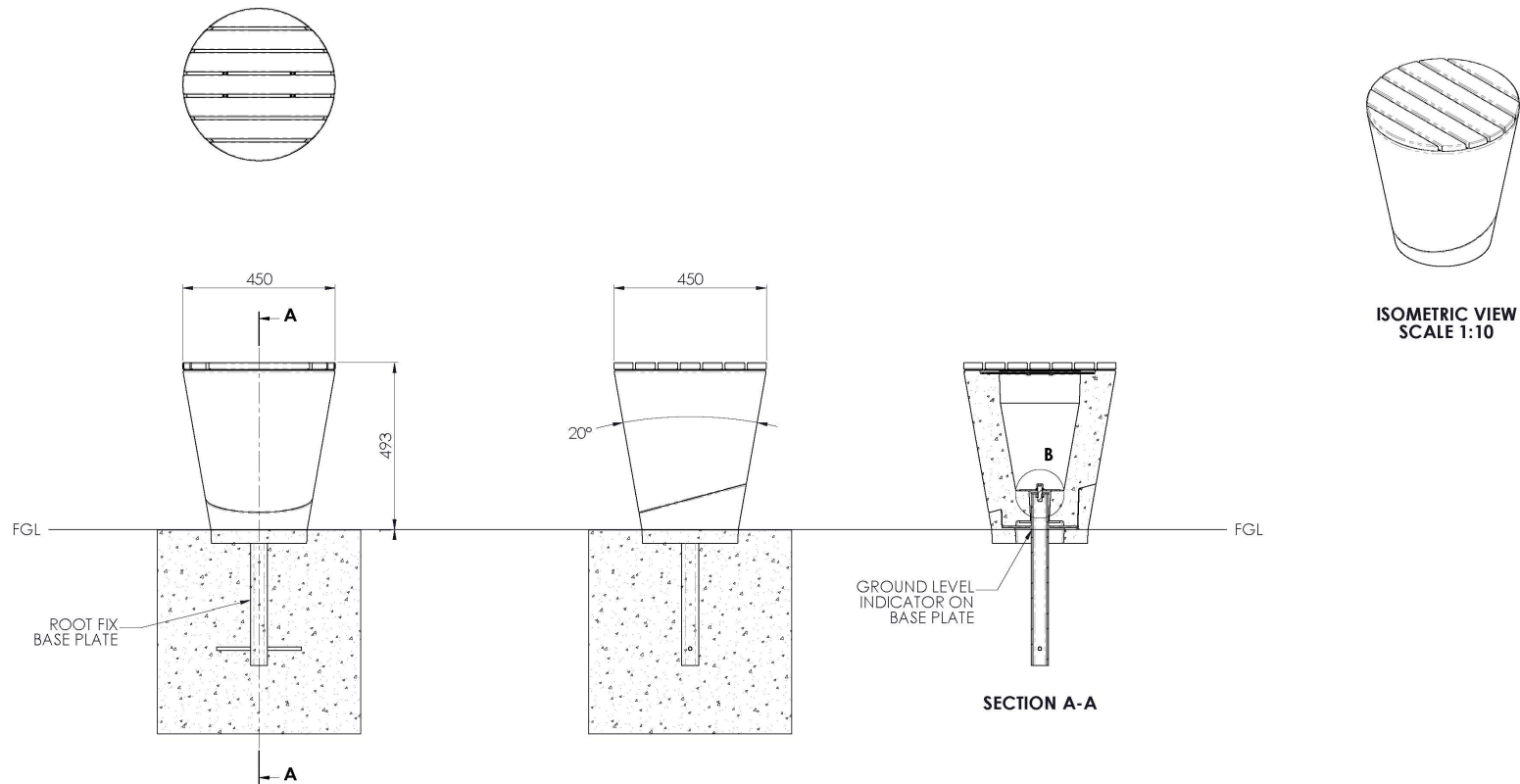
Woodhouse Part Code	CO-SE-00010	CO-SE-00010
Product Name	Coda Stool - Flange Fix	Coda Stool - Root Fix
Width (mm)	450	450
Overall Height (mm)	495	495
Depth (mm)	450	450
Weight (kg)	100	100
Colour	Silver Grey Mid Grey Anthracite	Silver Grey Mid Grey Anthracite
Seat Height (mm)	495	495
Seat Depth (mm)	450	450
Arm Rest Option	NO	NO
Anti Skate Option	NO	NO
Buried Base Depth (mm)	200	300
Mounting Type	Buried Flange	Buried Root
Body and Leg Material	Cast Stone	Cast Stone
Body and Leg Finish	Acid Etched	Acid Etched
Seat Material	Iroko	Iroko
Seat Finish	Untreated	Untreated

Colour Combination Part Codes

Main Colour	Trim Colour	Stool	
		Flange Fix	Root Fix
Silver Grey	Silver Grey	CO-SE-00001	CO-SE-00010
	Mid Grey	CO-SE-00002	CO-SE-00012
	Anthracite	CO-SE-00003	CO-SE-00013
Mid Grey	Silver Grey	CO-SE-00004	CO-SE-00014
	Mid Grey	CO-SE-00005	CO-SE-00015
	Anthracite	CO-SE-00006	CO-SE-00016
Anthracite	Silver Grey	CO-SE-00007	CO-SE-00017
	Mid Grey	CO-SE-00008	CO-SE-00018
	Anthracite	CO-SE-00009	CO-SE-00019

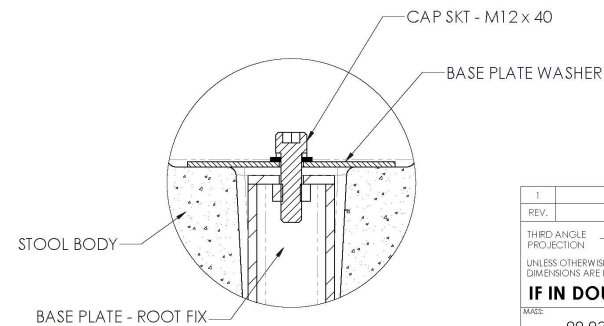


2	ADDED INSTALLATION NOTES		16/09/2013	JS	JS
1	FIRST ISSUE		14/08/2013	JS	JS
REV.	DESCRIPTION		DATE	ISSUED	APPROVED
<div>THIRD ANGLE PROJECTION</div> <div></div> <div>UNLESS OTHERWISE SPECIFIED: DIMENSIONS ARE IN MILLIMETRES</div> <div>IF IN DOUBT ASK</div>			<div>WOODHØUSE</div> <div>Tel: 01924 314313 Fax: 01924 883778 Email: enquiry@woodhouse.co.uk</div>		<div>A2</div> <div>DO NOT SCALE DRAWING</div>
			<div>CONFIDENTIAL</div> <div>THIS DRAWING IS PROPERTY OF WOODHOUSE UK PLC NO DISCLOSURE OR COPY TO BE MADE WITHOUT WRITTEN PERMISSION</div>		
WEIGHT		103.67 kg		SCALE: 1:10	
MATERIAL:		CAST CONCRETE		DRAWN: JS	
		DATE: 14/08/2013		DESCRIPTION: STOOL FLANGE FIX GA	
		USED ON: CODA			
FINISH:		ACID ETCHED		PART NO:	
		DWG NO. 08014.2		CO-SE-00010	



ISOMETRIC VIEW
SCALE 1:10

SECTION A-A



DETAIL B
SCALE 1:2

INSTALLATION INSTRUCTIONS:

FINISHED GROUND TO BE FLAT AND LEVEL

FOUNDATIONS TO BE CALCULATED
BASED ON SITE SPECIFIC CONDITIONS

EXPOSE GROUND FOR FOUNDATIONS

SET BASE PLATE IN DESIRED POSITION &
SUPPORT AT REQUIRED DEPTH USING LOCATION LINE
POUR FOUNDATION AND ALLOW TO CURE

MAKE GOOD AROUND BASE PLATE

LOWER STOOL BODY INTO POSITION OVER SUPPORT BASE
LOCK IN POSITION WITH FIXING KIT

FIT WOODEN TOP

REV.	DESCRIPTION	DATE	ISSUED	APPROVED
1	FIRST ISSUE	16/09/2013	JS	JS
<p>THIRD ANGLE PROJECTION</p> <p>UNLESS OTHERWISE SPECIFIED: DIMENSIONS ARE IN MILLIMETRES</p> <p>IF IN DOUBT ASK</p> <p>MASS: 99.93 kg</p> <p>MATERIAL: CAST CONCRETE</p> <p>FINISH: ACID ETCHED</p>				
<p>WOODHØUSE</p> <p>Tel: 01926 314313 Fax: 01926 863778 Email: enquire@woodhouse.co.uk</p> <p>CONFIDENTIAL</p> <p>THIS DRAWING IS PROPERTY OF WOODHOUSE UK PLC NO DISCLOSURE OR COPY TO BE MADE WITHOUT WRITTEN PERMISSION</p>				
<p>DRAWN: JS</p> <p>DATE: 16/09/2013</p> <p>NOTED ON: CODA</p> <p>DWG NO.: 08050.1</p>				<p>A2</p> <p>DO NOT SCALE DRAWING</p> <p>SCALE: 1:10</p>
<p>DESCRIPTION: STOOL ROOT FIX GA</p>				<p>PART NO.: CO-SE-00012</p>